



Chipsmall Limited consists of a professional team with an average of over 10 year of expertise in the distribution of electronic components. Based in Hongkong, we have already established firm and mutual-benefit business relationships with customers from,Europe,America and south Asia,supplying obsolete and hard-to-find components to meet their specific needs.

With the principle of “Quality Parts,Customers Priority,Honest Operation,and Considerate Service”,our business mainly focus on the distribution of electronic components. Line cards we deal with include Microchip,ALPS,ROHM,Xilinx,Pulse,ON,Everlight and Freescale. Main products comprise IC,Modules,Potentiometer,IC Socket,Relay,Connector.Our parts cover such applications as commercial,industrial, and automotives areas.

We are looking forward to setting up business relationship with you and hope to provide you with the best service and solution. Let us make a better world for our industry!



## Contact us

Tel: +86-755-8981 8866 Fax: +86-755-8427 6832

Email & Skype: info@chipsmall.com Web: www.chipsmall.com

Address: A1208, Overseas Decoration Building, #122 Zhenhua RD., Futian, Shenzhen, China

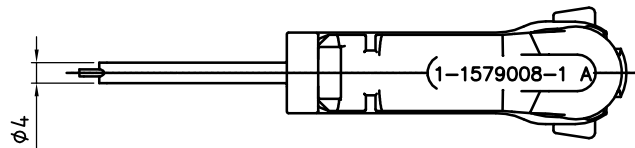
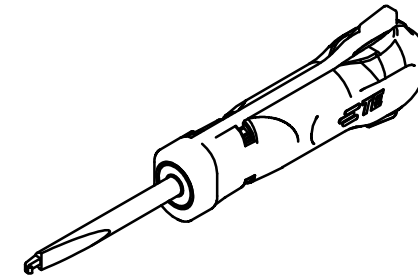
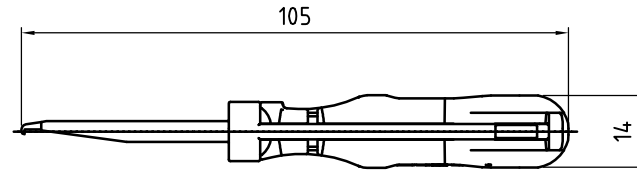
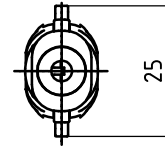
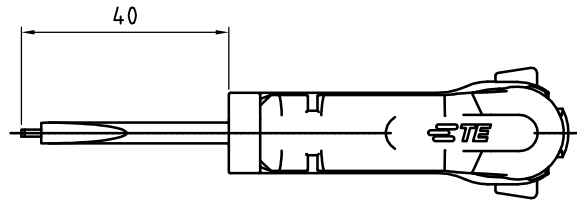


THIS DRAWING IS UNPUBLISHED.

RELEASED FOR PUBLICATION


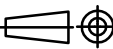
© COPYRIGHT - BY TYCO ELECTRONICS CORPORATION. ALL INTERNATIONAL RIGHTS RESERVED.

LDC		DIST		REVISIONS			
P	LTR	DESCRIPTION		DATE	DWN	APVD	
	A1	ECR-16-010803		27JUL16	KH	BM	



APPLICATION RANGE / Anwendungsbereich :

FOR 2&3 POS. TAB CONNECTOR HP : 1801174 AND 1801177

THIS DRAWING IS A CONTROLLED DOCUMENT.		DWN L. Sandhu 19FEB10	 TE Connectivity	
DIMENSIONS: mm		CHK G. Stegmayer 19FEB10		
TOLERANCES UNLESS OTHERWISE SPECIFIED:		APVD G. Stegmayer 19FEB10	NAME	
		PRODUCT SPEC	EXTRACTION TOOL, 2 AND 3POS. SECONDARY LOCK OPENING TOOL PIN	
MATERIAL		APPLICATION SPEC	SIZE A3	CAGE CODE 00779
FINISH		WEIGHT	DRAWING NO C=1-1579008-1	
		CUSTOMER DRAWING		RESTRICTED TO -
		SCALE 1:1	SHEET 1 OF 1	REV A1