



Chipsmall Limited consists of a professional team with an average of over 10 year of expertise in the distribution of electronic components. Based in Hongkong, we have already established firm and mutual-benefit business relationships with customers from,Europe,America and south Asia,supplying obsolete and hard-to-find components to meet their specific needs.

With the principle of “Quality Parts,Customers Priority,Honest Operation,and Considerate Service”,our business mainly focus on the distribution of electronic components. Line cards we deal with include Microchip,ALPS,ROHM,Xilinx,Pulse,ON,Everlight and Freescale. Main products comprise IC,Modules,Potentiometer,IC Socket,Relay,Connector.Our parts cover such applications as commercial,industrial, and automotives areas.

We are looking forward to setting up business relationship with you and hope to provide you with the best service and solution. Let us make a better world for our industry!



Contact us

Tel: +86-755-8981 8866 Fax: +86-755-8427 6832

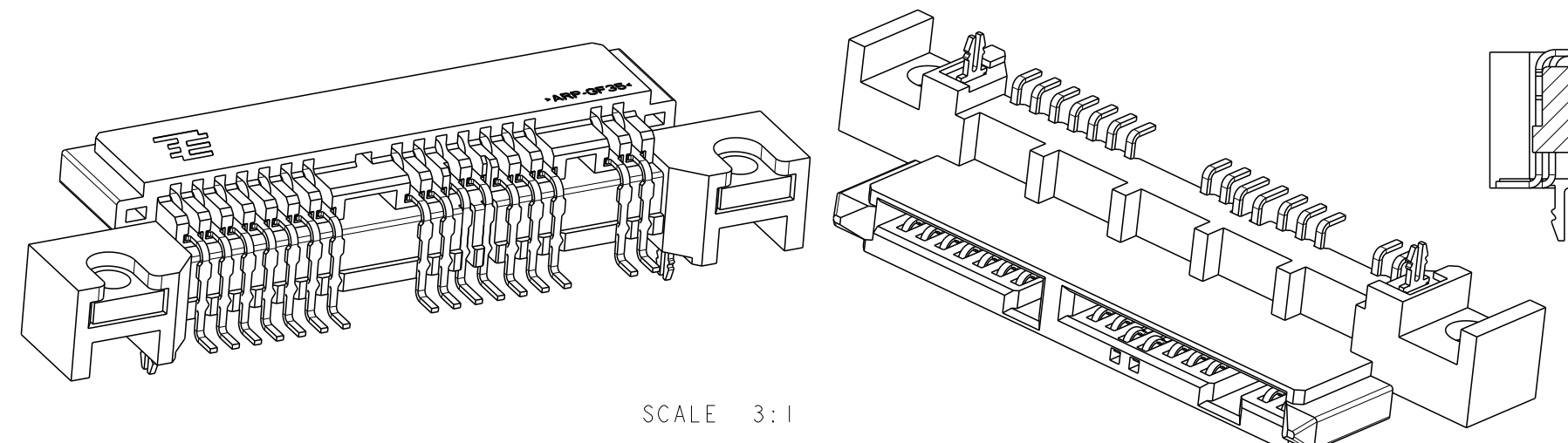
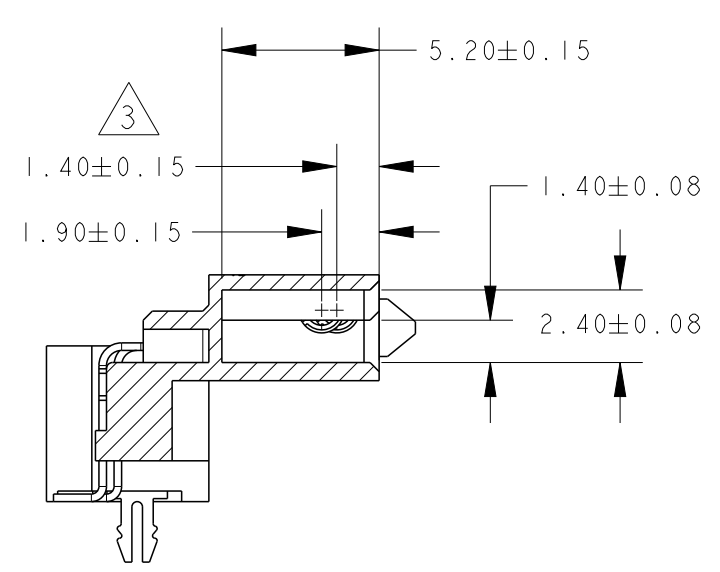
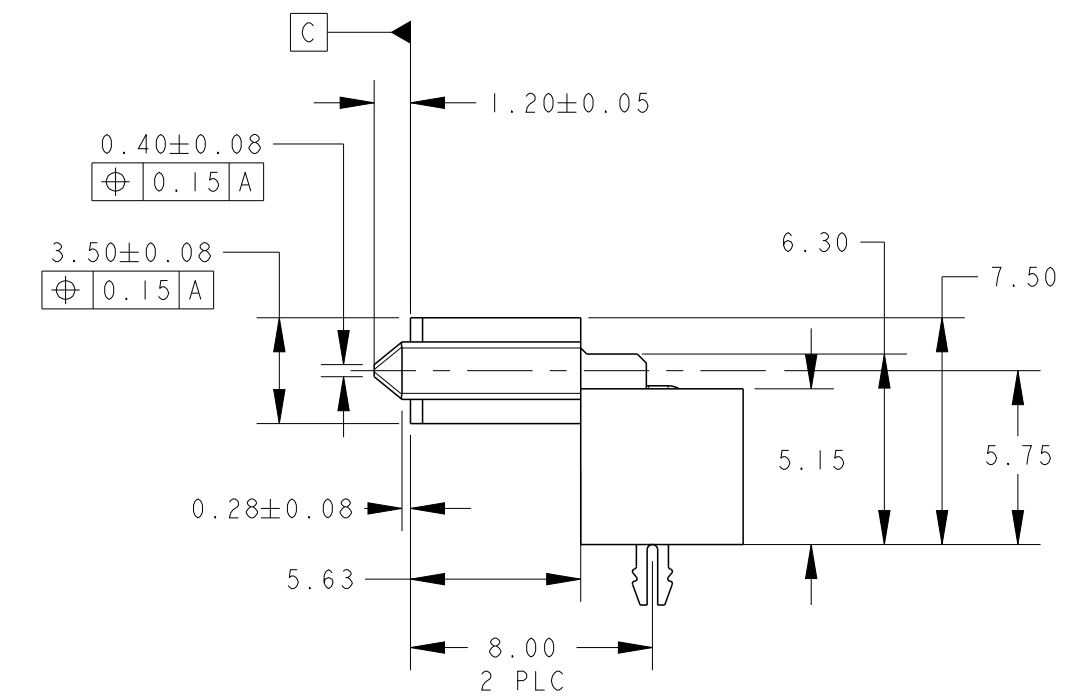
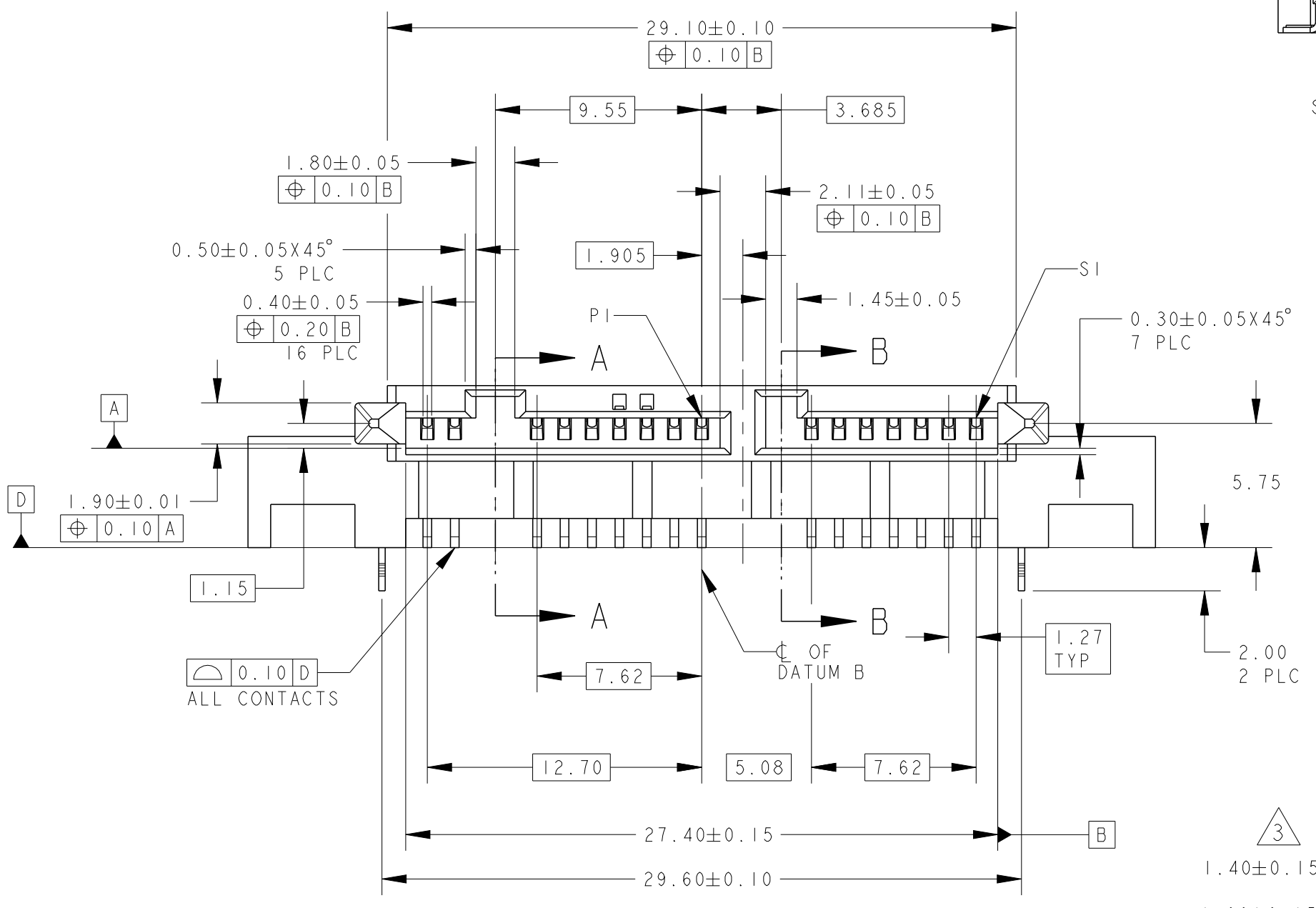
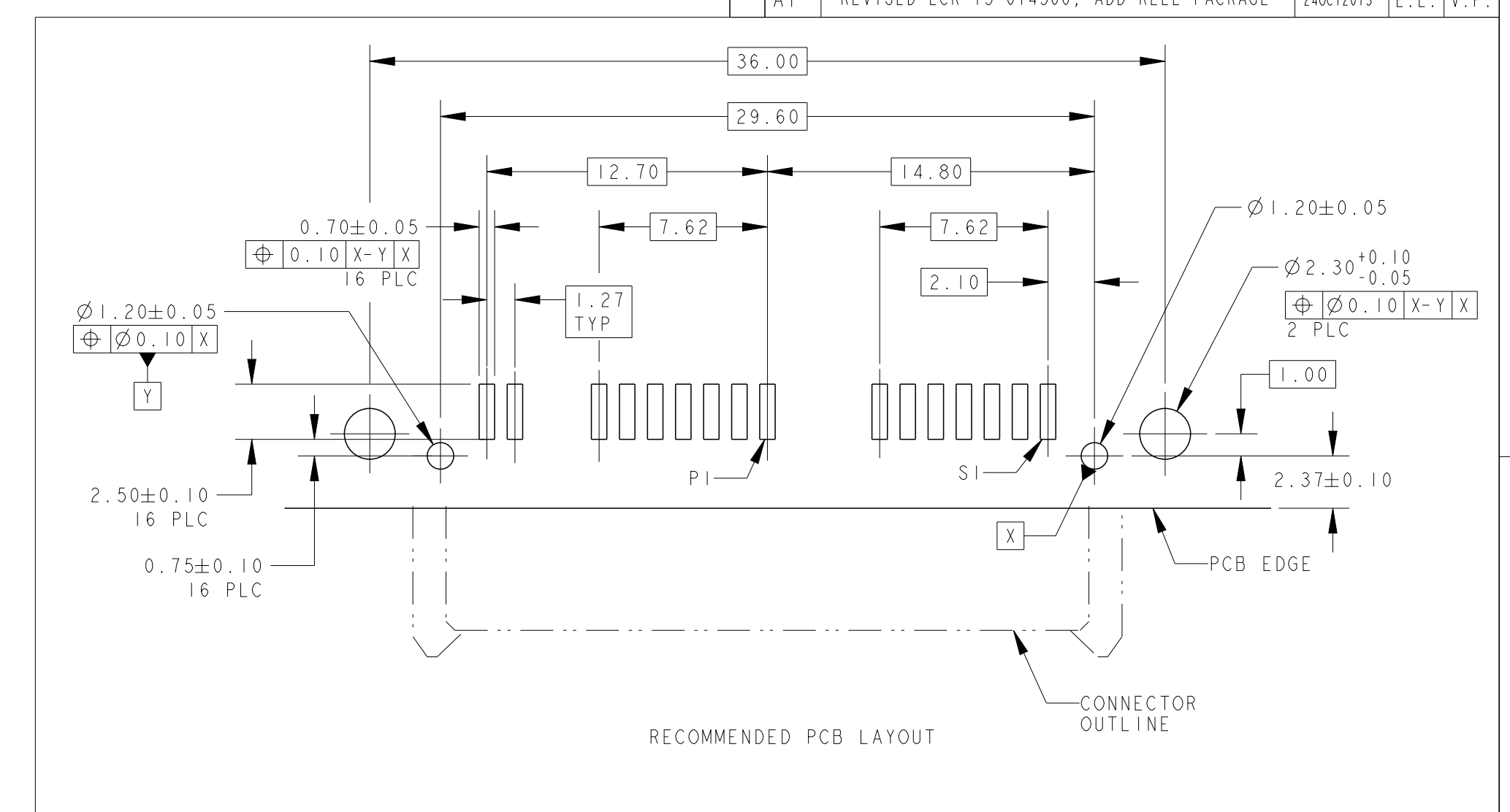
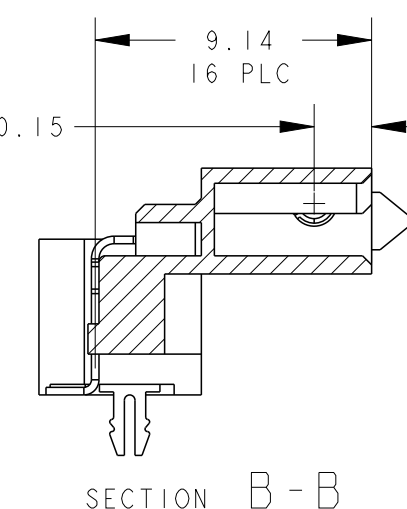
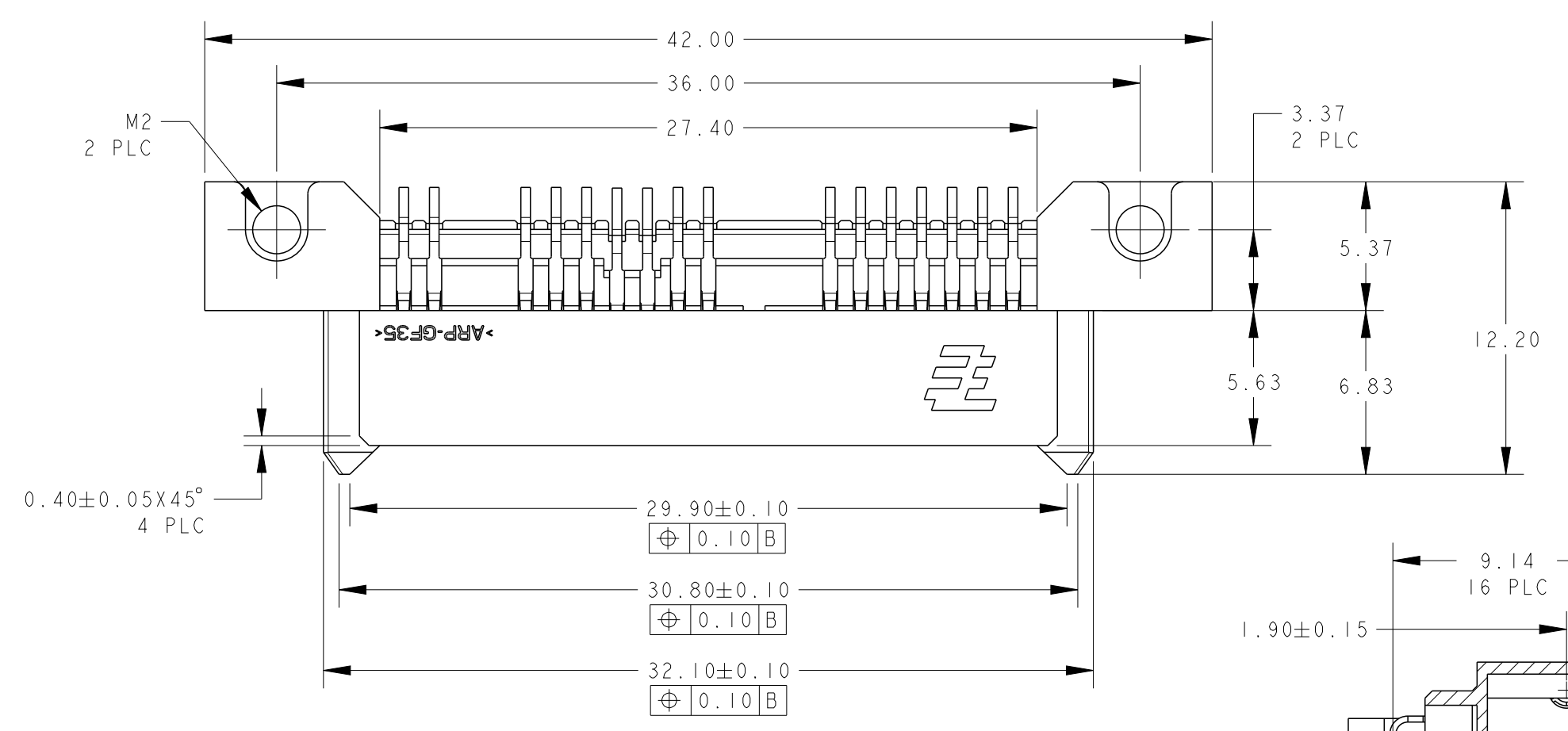
Email & Skype: info@chipsmall.com Web: www.chipsmall.com

Address: A1208, Overseas Decoration Building, #122 Zhenhua RD., Futian, Shenzhen, China



THIS DRAWING IS UNPUBLISHED. RELEASED FOR PUBLICATION 20
 © COPYRIGHT 20 BY - ALL RIGHTS RESERVED.

LOC		DIST		REVISIONS			
P	LTR	DESCRIPTION	DATE	DWN	APVD		
AI		REVISED ECR-13-014306, ADD REEL PACKAGE	24OCT2013	E.L.	V.P.		



SCALE 3:1

- NOTES:
- MATERIAL:
 HOUSING: HIGH TEMP THERMOPLASTIC, UL94V-0, COLOR: BLACK
 CONTACT: COPPER ALLOY
 BOARDLOCK: COPPER ALLOY
 M2 NUT: STEEL
 - FINISH:
 CONTACT MATING AREA: GOLD PLATING OR GOLD FLASH OVER
 PALLADIUM-NICKEL (REFER TO TABLE)
 CONTACT SOLDER TAIL: MIN 2.54µm MATTE TIN PLATING
 BOARDLOCK: MIN 2.54µm MATTE TIN PLATING
 UNDERPLATE: MIN 1.27µm NICKEL PLATING ALL OVER
 - PIN #P3 AND #P4 ONLY

REEL	GOLD FLASH ONLY	I-1735583-3
	0.38µm [15u"] MIM	I-1735583-2
	0.76µm [30u"] MIN	I-1735583-1
TRAY	GOLD FLASH ONLY	1735583-3
	0.38µm [15u"] MIM	1735583-2
	0.76µm [30u"] MIN	1735583-1
PACKAGE TYPE	AU OR PD-NI THICKNESS	PART NUMBER

THIS DRAWING IS A CONTROLLED DOCUMENT.		DWN	IY PANG	12NOV2007
DIMENSIONS:		CHK	SF LEONG	04JAN2008
mm	TOLERANCES UNLESS OTHERWISE SPECIFIED:	APVD	SF LEONG	04JAN2008
	0 PLC ±	PRODUCT SPEC		
	1 PLC ±	APPLICATION SPEC		
	2 PLC ±0.20	WEIGHT		
	3 PLC ±	CUSTOMER DRAWING		
	4 PLC ±	SCALE	4:1	SHEET 1 OF 3
	ANGLES ±3°	REV	AI	
	FINISH			

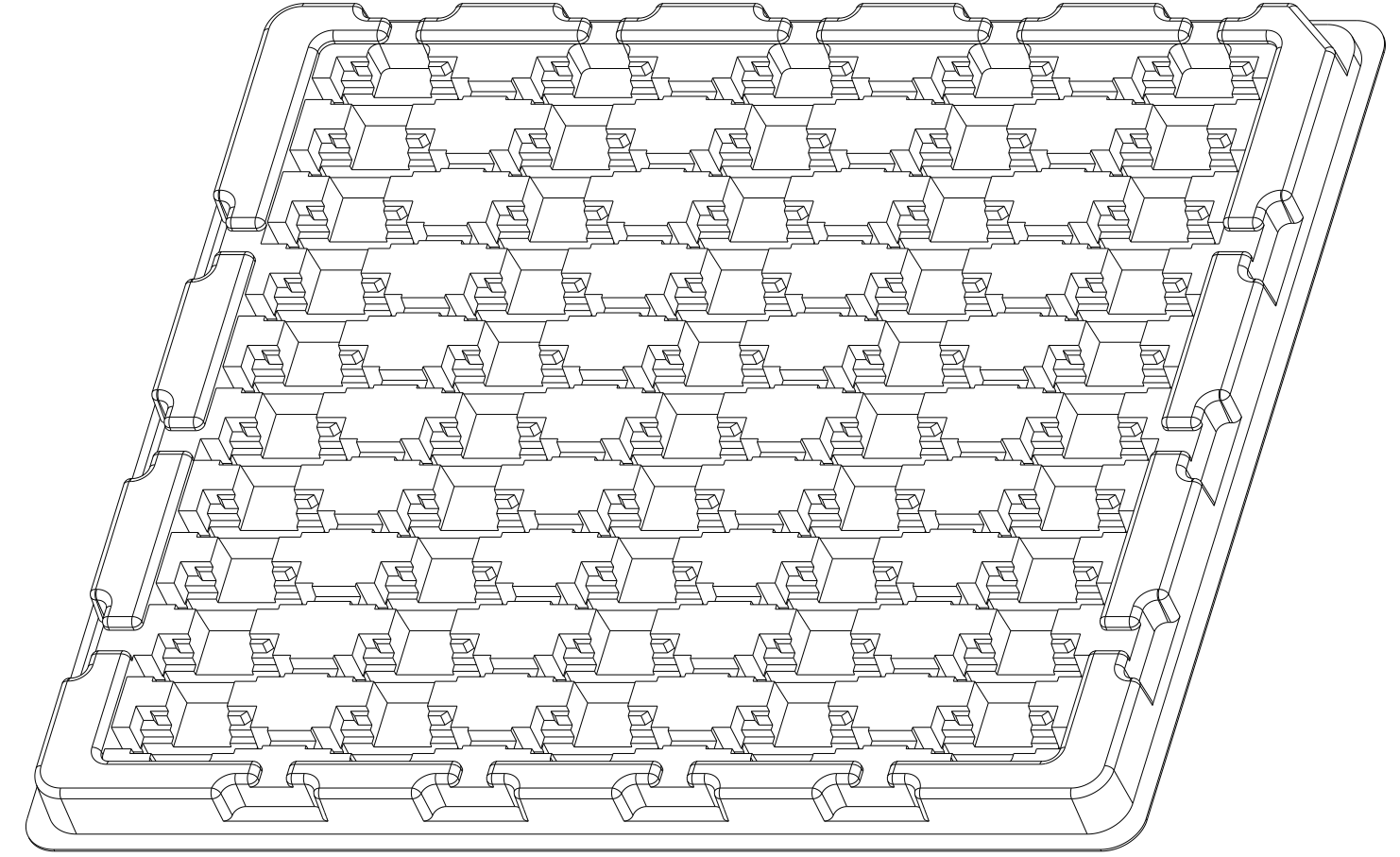
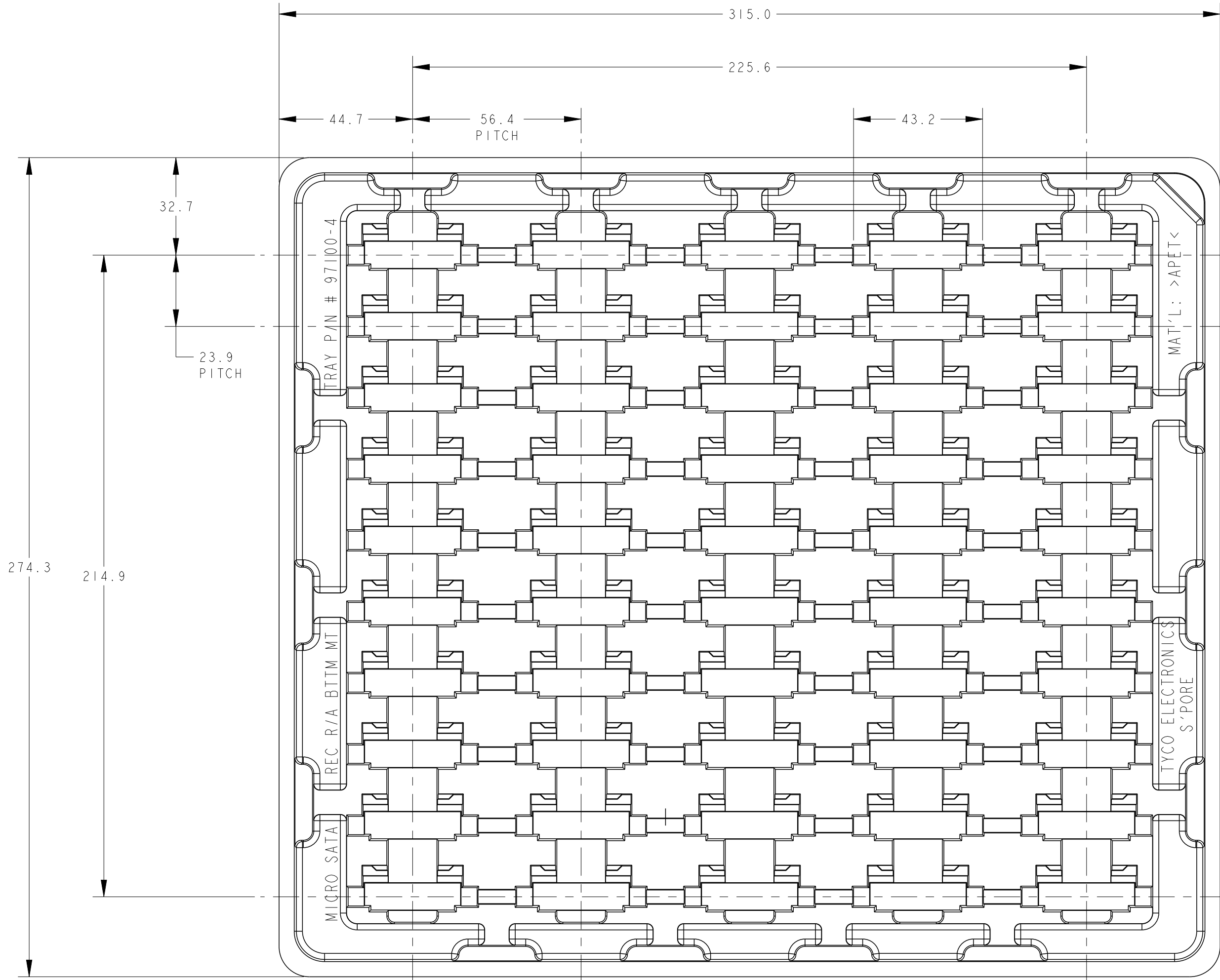
STE TE Connectivity

NAME: MICRO SATA RECEPTACLE, 16P
 RIGHT ANGLE, SMT
 BOTTOM MOUNT, H5.75

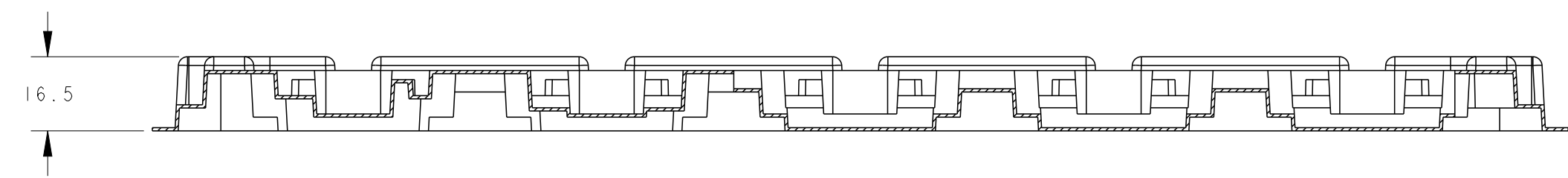
SIZE: A200779 CAGE CODE: C-1735583
 DRAWING NO: 1735583-3

THIS DRAWING IS UNPUBLISHED. RELEASED FOR PUBLICATION 20
 © COPYRIGHT 20 BY - ALL RIGHTS RESERVED.

LOC	DIST	REVISIONS				
P	LTR	DESCRIPTION	DATE	DWN	APVD	
DY	-	SEE SHEET 1	-	-	-	



4. PACKAGE MATERIAL TRAY: APET

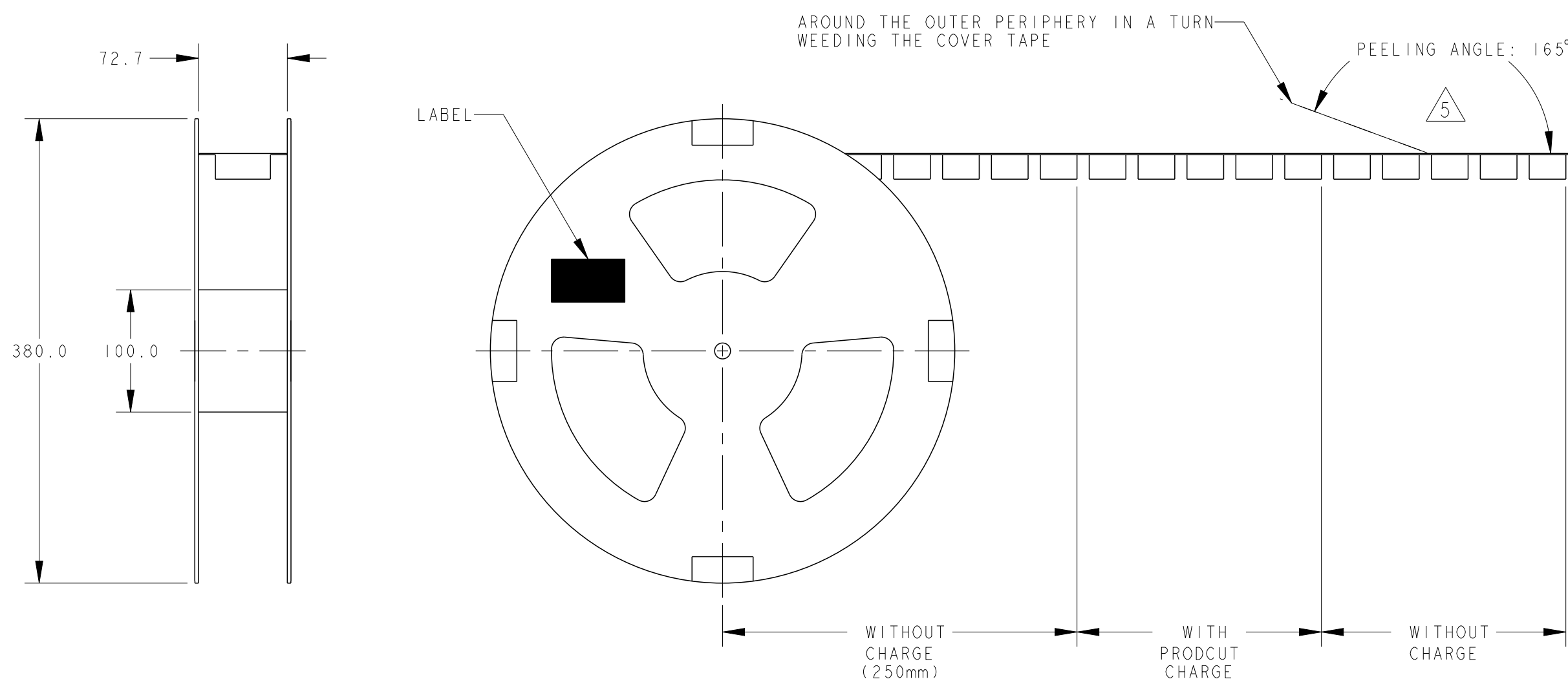


50	11	550	1735583-3
			1735583-2
			1735583-1
PCS/TRAY	TRAY/BOX	PCS/BOX	PART NUMBER

THIS DRAWING IS A CONTROLLED DOCUMENT.		DWN	STE TE Connectivity	
DIMENSIONS: mm		CHK		
TOLERANCES UNLESS OTHERWISE SPECIFIED:		APVD	NAME MICRO SATA RECEPTACLE, 16P RIGHT ANGLE, SMT BOTTOM MOUNT, H5.75	
0 PLC ±		PRODUCT SPEC		
1 PLC ±3		APPLICATION SPEC	SIZE	CAGE CODE
2 PLC ±2		WEIGHT	A2	00779
3 PLC ±1		CUSTOMER DRAWING	DRAWING NO	C-1735583
4 PLC ±			RESTRICTED TO	-
ANGLES ±3°			SCALE	NONE
FINISH			SHEET	2 OF 3
			REV	A1

THIS DRAWING IS UNPUBLISHED. RELEASED FOR PUBLICATION 20
 © COPYRIGHT 20 BY - ALL RIGHTS RESERVED.

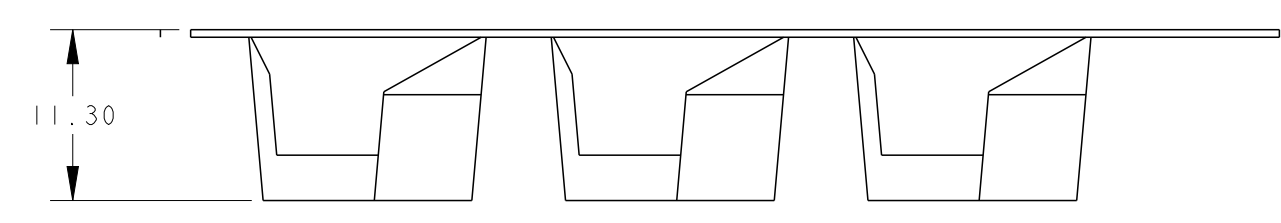
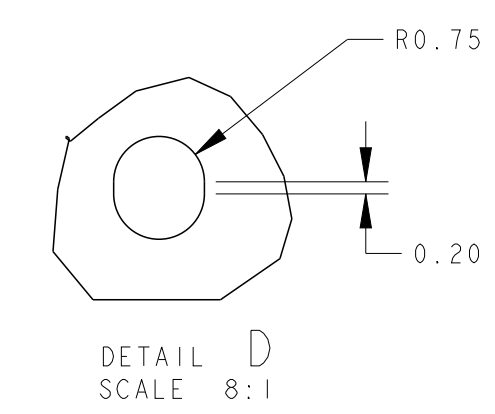
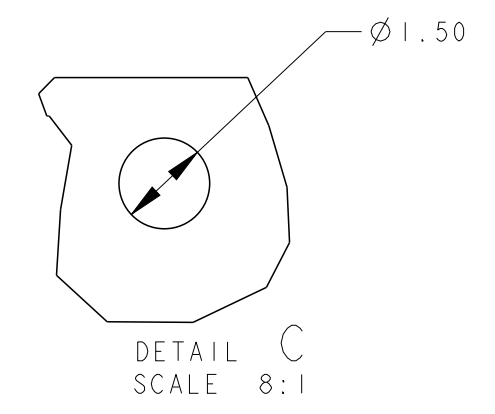
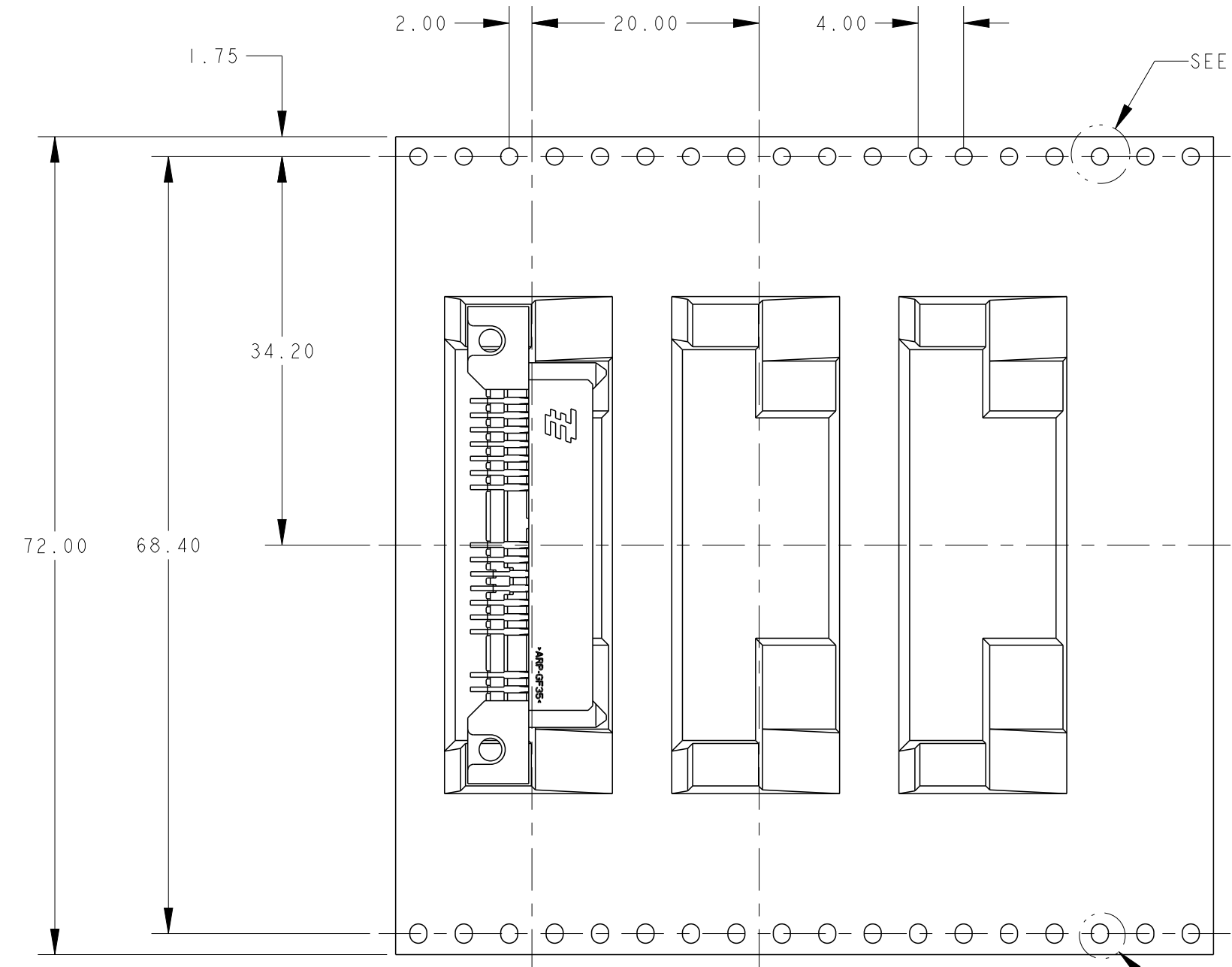
LOC		DIST		REVISIONS			
P	LTR	DESCRIPTION	DATE	DWN	APVD		
-	-	SEE SHEET 1	-	-	-		



5 PEELING STRENGTH OF COVER TAPE: 0.2N~1.2N

6. PACKAGE MATERIAL
 CARRY TAPE: PS, COLOR: BLACK
 COVER TAPE: PET, COLOR: CLEAR

USER DIRECTION OF UNREELING →



400	3	1200	1-1735583-3
			1-1735583-2
			1-1735583-1
PCS/REEL	REEL/BOX	PCS/BOX	PART NUMBER

THIS DRAWING IS A CONTROLLED DOCUMENT.		DWN	TE Connectivity	
DIMENSIONS: mm		CHK	NAME	
TOLERANCES UNLESS OTHERWISE SPECIFIED:		APVD	MICRO SATA RECEPTACLE, 16P	
0 PLC	±	PRODUCT SPEC	RIGHT ANGLE, SMT	
1 PLC	±1	APPLICATION SPEC	BOTTOM MOUNT, H5.75	
2 PLC	±0.5	WEIGHT	SIZE	CAGE CODE
3 PLC	±	CUSTOMER DRAWING	A200779	C-1735583
4 PLC	±	SCALE	NONE	SHEET 3 OF 3
ANGLES	±3°	REV	AI	
FINISH				