



Chipsmall Limited consists of a professional team with an average of over 10 year of expertise in the distribution of electronic components. Based in Hongkong, we have already established firm and mutual-benefit business relationships with customers from,Europe,America and south Asia,supplying obsolete and hard-to-find components to meet their specific needs.

With the principle of “Quality Parts,Customers Priority,Honest Operation,and Considerate Service”,our business mainly focus on the distribution of electronic components. Line cards we deal with include Microchip,ALPS,ROHM,Xilinx,Pulse,ON,Everlight and Freescale. Main products comprise IC,Modules,Potentiometer,IC Socket,Relay,Connector.Our parts cover such applications as commercial,industrial, and automotives areas.

We are looking forward to setting up business relationship with you and hope to provide you with the best service and solution. Let us make a better world for our industry!



Contact us

Tel: +86-755-8981 8866 Fax: +86-755-8427 6832

Email & Skype: info@chipsmall.com Web: www.chipsmall.com

Address: A1208, Overseas Decoration Building, #122 Zhenhua RD., Futian, Shenzhen, China



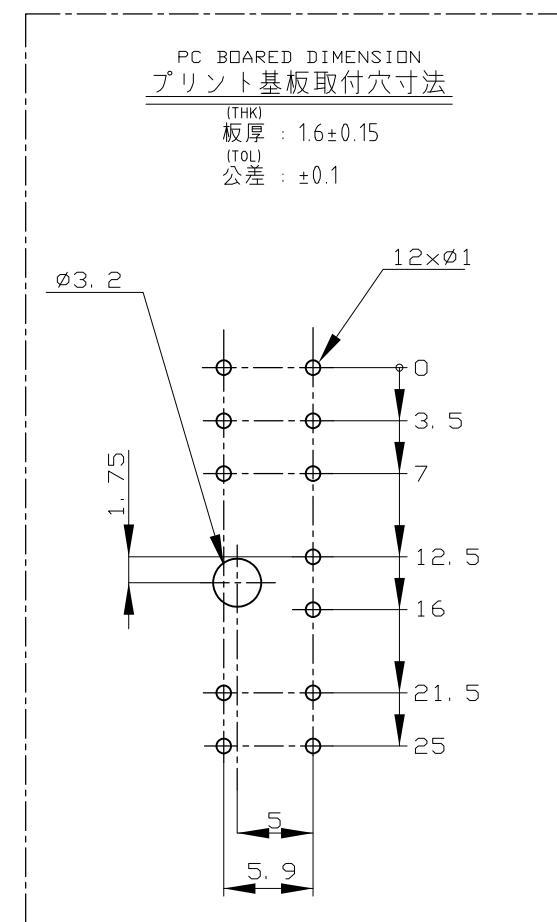
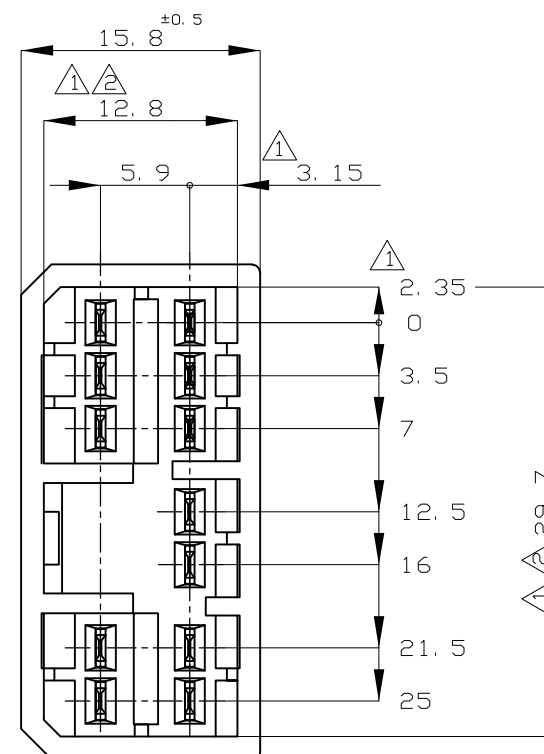
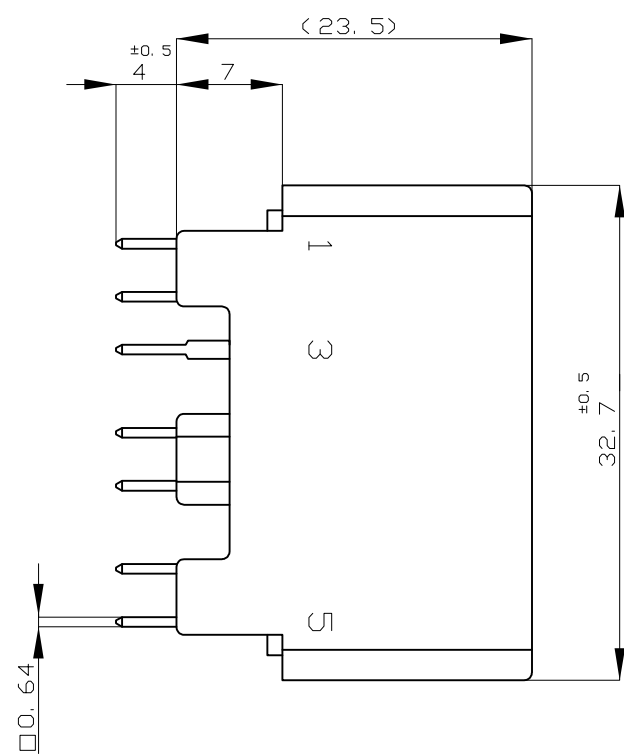
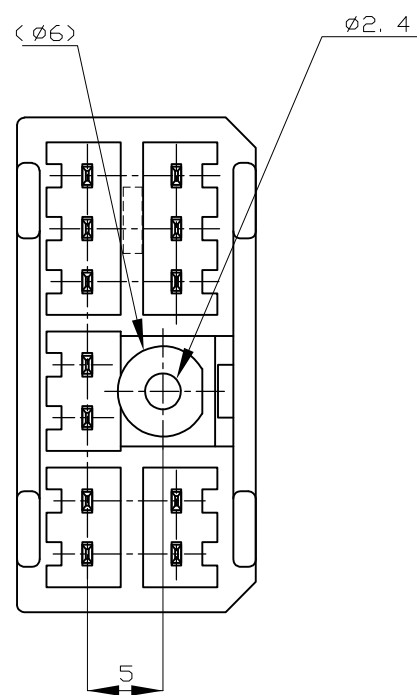
THIS DRAWING IS UNPUBLISHED.

RELEASED FOR PUBLICATION

© COPYRIGHT - By Tyco Electronics Japan G.K.

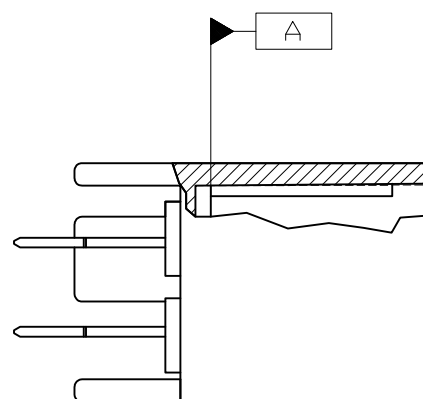
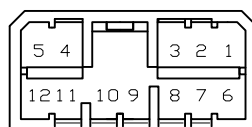
ALL RIGHTS RESERVED.

LOC	DIST	REVISIONS					
J	-	P	LTR	DESCRIPTION	DATE	DWN	APVD
		H4	REVISED	ECR-15-005789	15APR15	KF	RK



NOTES :

- △ TO BE MEASURED BETWEEN [A] AND 2
- △ TO BE MATED WITH PLUG HSG SMOOTHLY
- 3 TO BE USE M3 TAPPING SCREW JIS B1115 OR 1122 (TYPE2 OR 4) BEFORE SOLDER (TIGHTENING TORQUE; 0.8N-m MAX)
- 4 APPLIED PLUG HSG P/N ; 173851
- △ CIRCUIT NUMBER



- 注 :
- △ [A] 面から2mmの範囲で測定
 - △ 相手ハウジングと所定の機能を満たして嵌合できること
 - 3. プリント基板への取付けは JIS-B1115 又は 1122, M3X6ナベ (2種又は4種) のタッピンネジで締付けた後ハンダ付けする (締付トルク; 0.8N-m以下)
 - 4. 嵌合相手ハウジング型番; 173851
 - △ 回路番号; 上図参照のこと

OBSOLETE	SELECTIVE TIN (MATTE)	SELECTIVE GOLD x 12	1~12	NATURAL 自然色	2-5174957-1	
	SELECTIVE-TIN	PRE-TIN x 12	-	NATURAL 自然色	3-174957-1	
OBSOLETE	TIN-LEAD	SELECTIVE GOLD x 12	1~12	NATURAL 自然色	2-174957-1	
	PRE-TIN x 12		-	NATURAL 自然色	1-174957-1	
	SELECTIVE TIN (MATTE)	SELECTIVE-TIN x 12 (BRIGHT)	-	BLACK 黒色	174957-3	
	SELECTIVE-TIN	PRE-TIN x 12	-	BLACK 黒色	174957-2	
SOLDERING SIDE 半田付け部		CONTACT SIDE 接触部側		△ GOLD PLATED CIRCUIT NO. 金めっき回路番号	COLOR 色	PART NUMBER 製品型番
CONTACT FINISH コントクト仕上						

THIS DRAWING IS A CONTROLLED DOCUMENT.

DIMENSIONS: 単位: 耗 mm	TOLERANCES UNLESS OTHERWISE SPECIFIED: 一般公差
	0 PLC ± -
	1 PLC ± -
	2 PLC ± -
	3 PLC ± -
	4 PLC ± -
ANGLES	± -
FINISH 仕上	SEE TABLE
MATERIAL 材料	HOUSING : PBT
	CONTACT : BRASS

GENERAL TOLERANCE	
0<* < 10	±0.2
10<* < 30	±0.25
30<* < 100	±0.3
ANGLES	±3°

DWN M.KADOSAKI 120CT05
CHK T.SHINOHARA 120CT05
APVD K.BETSUI 120CT05

NAME 名称
.070 SRS MLC
12Pos. CAP HSG (W-B(V-TYPE))

PRODUCT SPEC 製品規格
APPLICATION SPEC 取付適用規格

WEIGHT

SIZE A3 CAGE CODE 00779 DRAWING NO. 174957 RESTRICTED TO

CUSTOMER DRAWING SCALE 尺度 2:1 SHEET 1 OF 1 REV H4