



Chipsmall Limited consists of a professional team with an average of over 10 year of expertise in the distribution of electronic components. Based in Hongkong, we have already established firm and mutual-benefit business relationships with customers from,Europe,America and south Asia,supplying obsolete and hard-to-find components to meet their specific needs.

With the principle of "Quality Parts,Customers Priority,Honest Operation,and Considerate Service",our business mainly focus on the distribution of electronic components. Line cards we deal with include Microchip,ALPS,ROHM,Xilinx,Pulse,ON,Everlight and Freescale. Main products comprise IC,Modules,Potentiometer,IC Socket,Relay,Connector.Our parts cover such applications as commercial,industrial, and automotives areas.

We are looking forward to setting up business relationship with you and hope to provide you with the best service and solution. Let us make a better world for our industry!



## Contact us

Tel: +86-755-8981 8866 Fax: +86-755-8427 6832

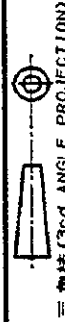
Email & Skype: info@chipsmall.com Web: www.chipsmall.com

Address: A1208, Overseas Decoration Building, #122 Zhenhua RD., Futian, Shenzhen, China



DEPT5270>E20501>U.312>S.C-175278L

NUMBER  
C-175278

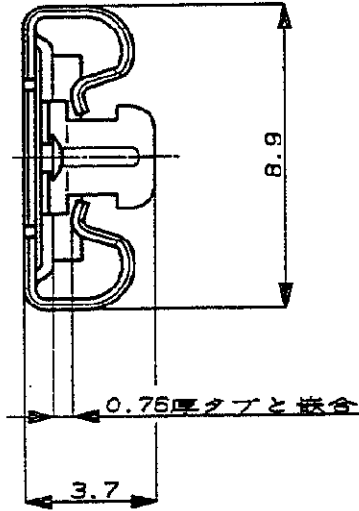


METRIC

単位、寸法 DIMENSIONS IN MM. DO NOT SCALE PRINT

PRINT DIST

AMP-J  
REV.10/89

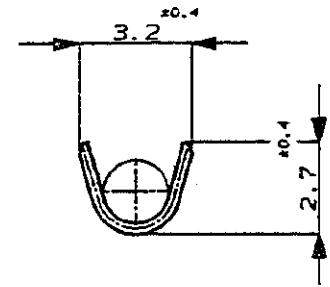
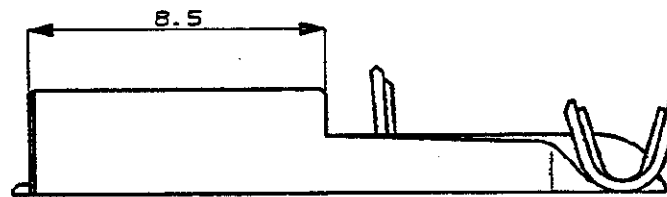
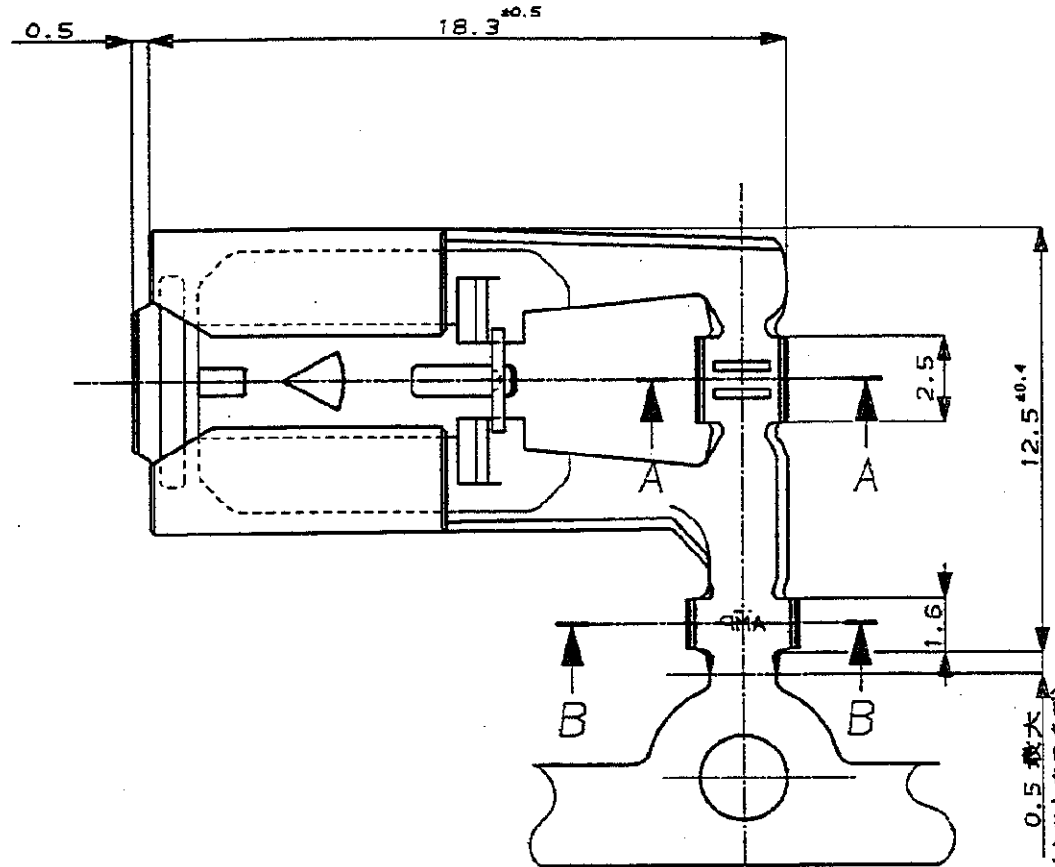


注 :

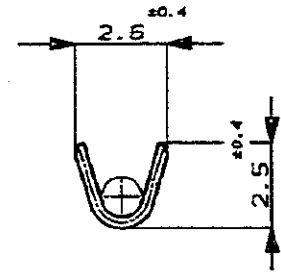
- 1 適用ハウジング型番 172615
- 2 適用製品規格 NO.108-5131
- 3 適用圧着規格 NO.114-5164

NOTE,

- 1. THE MATING PLUG HOUSING PART NUMBER, 172615
- 2. /PRODUCT SPEC. No. 108-5131
- 3. APPLICATION SPEC. No. 114-5164



断面 B-B  
SECT.



断面 A-A  
SECT.

				Copyright ©1991年 AMP (Japan), LTD. ALL RIGHTS RESERVED.		<b>AMP</b> 日本エー・エム・ピー株式会社 Tokyo, Japan		
適合電線断面積 (WIRE RANGED)		被覆外径 (INSULATION DIA.)		名称 (NAME) .312 SERIES POSITIVE LOCK RECEPTACLE .312 シリーズ ポジティブロックリセプタクル				
0.5-0.85 mm <sup>2</sup> (AWG20-14)		1.3-1.8 mmφ		FLAG L-TYPE FOR THIN INS. WIRE 薄肉電線用 旗型 Lタイプ				
材料 (MATERIAL)		仕上 (FINISH)		一般公差 (GENERAL TOLERANCES)		SIZE	LOC	番号 (No.)
黄銅 ; BRASS		PRE-TIN. 錫めつき		10mm以下 : ±0.2 10mm以上 30mm以下 : ±0.25 30mm以上 100mm以下 : ±0.3 100mm以上 : ±0.5		A3	J	C-175278
0	作成	J-0115	YF	AT	5/29/91	尺度 (SCALE)	REV.	SHEET
LTR	変更 (REVISION RECORD)	DR	CHK	DATE	CHK.	5-1	0	1 OF 1

(CUSTOMER DRAWING) 参考 ☒ 面