



Chipsmall Limited consists of a professional team with an average of over 10 year of expertise in the distribution of electronic components. Based in Hongkong, we have already established firm and mutual-benefit business relationships with customers from,Europe,America and south Asia,supplying obsolete and hard-to-find components to meet their specific needs.

With the principle of “Quality Parts,Customers Priority,Honest Operation,and Considerate Service”,our business mainly focus on the distribution of electronic components. Line cards we deal with include Microchip,ALPS,ROHM,Xilinx,Pulse,ON,Everlight and Freescale. Main products comprise IC,Modules,Potentiometer,IC Socket,Relay,Connector.Our parts cover such applications as commercial,industrial, and automotives areas.

We are looking forward to setting up business relationship with you and hope to provide you with the best service and solution. Let us make a better world for our industry!



Contact us

Tel: +86-755-8981 8866 Fax: +86-755-8427 6832

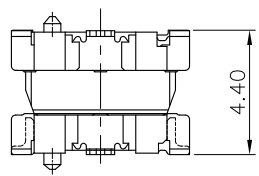
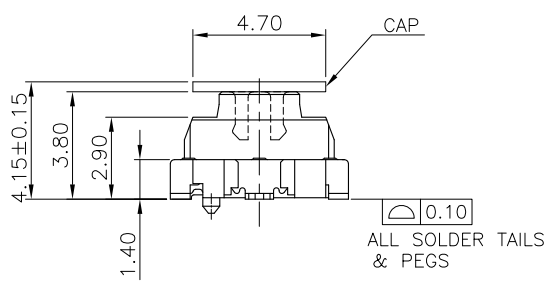
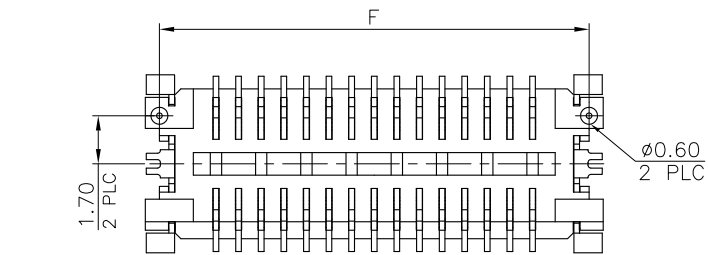
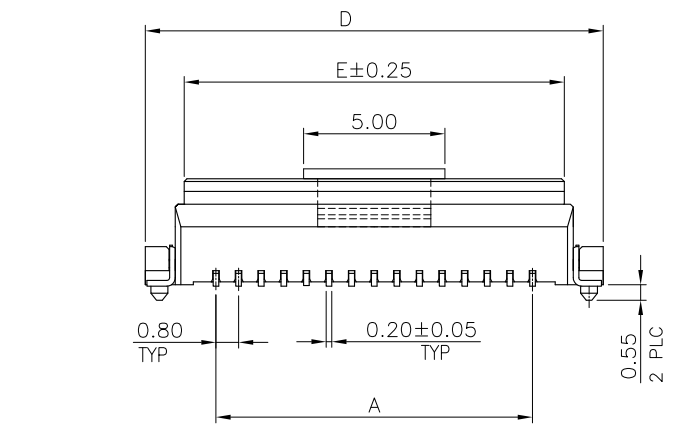
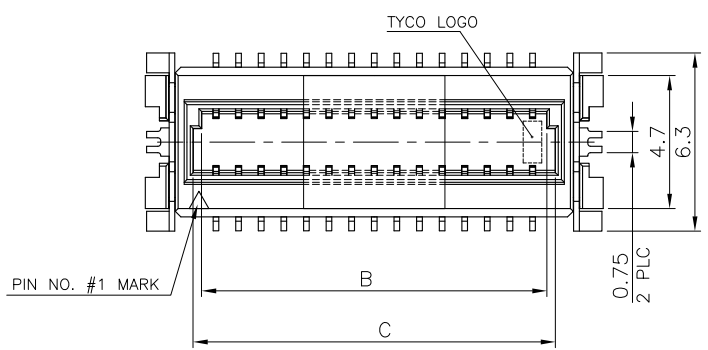
Email & Skype: info@chipsmall.com Web: www.chipsmall.com

Address: A1208, Overseas Decoration Building, #122 Zhenhua RD., Futian, Shenzhen, China



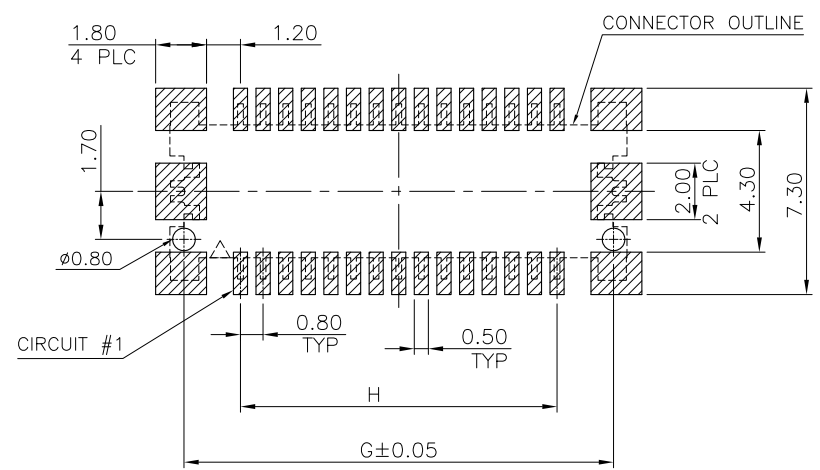
THIS DRAWING IS UNPUBLISHED. RELEASED FOR PUBLICATION
 © COPYRIGHT 2013 BY TYCO ELECTRONICS CORPORATION. ALL RIGHTS RESERVED.

LOC	DW	DIST	REVISIONS					
			P	LTR	DESCRIPTION	DATE	DWN	APVD
			B		ECR-13-008153	17MAY13	AW	WK



STACKING HEIGHT

- NOTES:
- MATERIAL:
HOUSING: PA6T WITH 30% GF, UL94 V-0, NATURAL COLOR.
CONTACTS: PHOSPHOR BRONZE.
PEGS: BRASS.
 - FINISH:
CONTACTS: 2.54µm [100µ"] MIN. MATTE-TIN OVER 1.27µm [50µ"] MIN. NICKEL ON ENTIRE CONTACT.
PEGS: 2.54µm [100µ"] MIN. MATTE-TIN OVER 1.27µm [50µ"] MIN. NICKEL.
 - REFLOW SOLDER CAPABLE TO 260°C AS PER TEC-109-201, CONDITION B.
 - SUBSTANCE RESTRICTIONS FOR LOW HALOGEN (BY WEIGHT):
BROMINE (Br) ≤ 900 PPM (0.09%)
CHLORINE (Cl) ≤ 900 PPM (0.09%)
TOTAL CONCENTRATION OF (Cl) + (Br) ≤ 1500 PPM (0.15%)



RECOMMENDED PCB LAYOUT

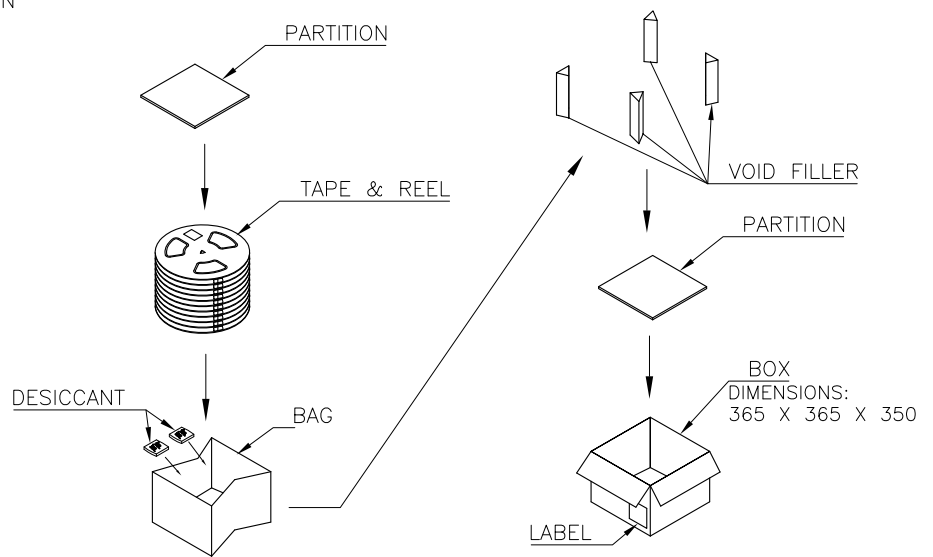
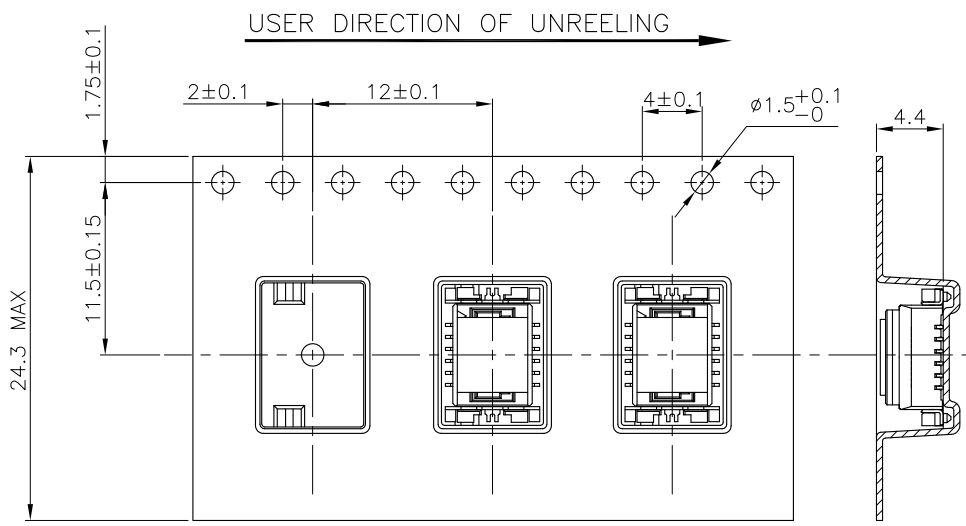
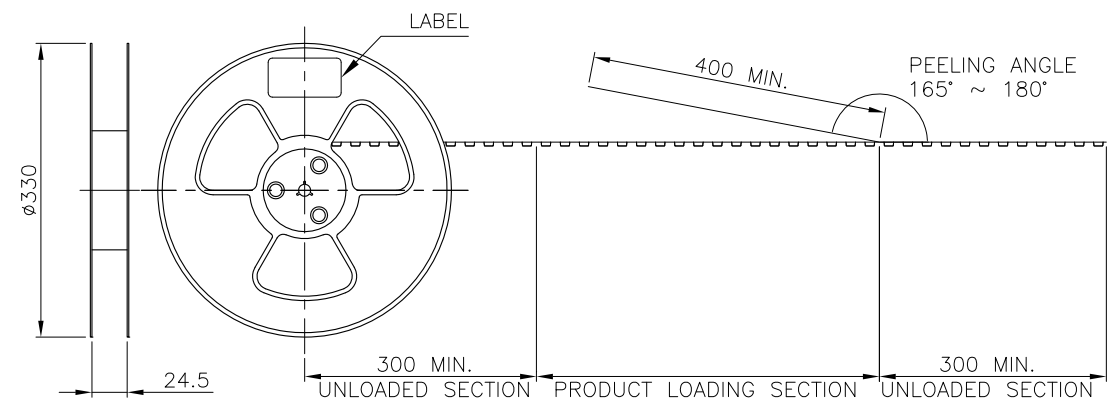
4.00	8	8.00	6.25	9.00	5.62	5.02	4.00	12	1-1775629-2
H	G	F	E	D	C	B	A	NO. OF CONTACTS	PART NUMBER
DIMENSIONS									

THIS DRAWING IS A CONTROLLED DOCUMENT.		DWN	A. WU	15MAY2007	 TE Connectivity	0.8 MM PITCH BOARD-TO-BOARD CONNECTOR, MATING HEIGHT 4.4 MM, SMT WITH CAP							
DIMENSIONS: MM		CHK	S. HOU	15MAY2007									
TOLERANCES UNLESS OTHERWISE SPECIFIED:		APVD	W.J. KE	15MAY2007									
0 PLC ± - 1 PLC ± 0.3 2 PLC ± 0.2 3 PLC ± - 4 PLC ± - ANGLES ± 3'		PRODUCT SPEC	108-57488										
MATERIAL		FINISH		QUALIFICATION TEST REPORT	501-57566	SIZE	A3	CAGE CODE	00779	DRAWING NO	C=1775629	RESTRICTED TO	-
SEE NOTE		SEE NOTE		WEIGHT	0.22g GRAMS	CUSTOMER DRAWING		SCALE	-	SHEET	1 OF 2	REV	B

THIS DRAWING IS UNPUBLISHED. RELEASED FOR PUBLICATION
 © COPYRIGHT 2013 BY TE CONNECTIVITY. ALL RIGHTS RESERVED.

LOC	DIST	REVISIONS					
DW	-	P	LTR	DESCRIPTION	DATE	DWN	APVD
				SEE SHEET 1			

- NOTES:
- MATERIAL:
 BOX: FIBREBOARD, CORRUGATED, DOUBLE WALL.
 COVER TAPE: PET, TRANSPARENT COLOR.
 CARRIER TAPE: POLYSTYRENES, TRANSPARENT COLOR.
 REEL: HIPS, BLUE COLOR.
 BAG: POLYETHYLENES, TRANSPARENT COLOR.
 - EACH BAG SHALL BE INCLUDED DESICCANT.
 - PEELING STRENGTH: 0.1 ~ 1.3 N (10 ~ 130 GRAMS).
 - PEELING SPEED: 300 mm/min.



8000	800	10	8.21	2.16	12
PCS /BOX	PCS /REELS	REELS /BOX	GROSS WEIGHT (Kg)	NET WEIGHT (Kg)	NO. OF CONTACTS

THIS DRAWING IS A CONTROLLED DOCUMENT.		DWN	-	TE Connectivity 0.8 MM PITCH BOARD-TO-BOARD CONNECTOR, MATING HEIGHT 4.4 MM, SMT WITH CAP				
DIMENSIONS: MM		CHK	-				NAME	
TOLERANCES UNLESS OTHERWISE SPECIFIED:		APVD	-				PRODUCT SPEC	
0 PLC ± - 1 PLC ± - 2 PLC ± - 3 PLC ± - 4 PLC ± - ANGLES ± -		APPLICATION SPEC					SIZE CAGE CODE DRAWING NO	
MATERIAL		WEIGHT		A3 00779 C=1775629		RESTRICTED TO		
FINISH		CUSTOMER DRAWING		SCALE	SHEET 2 of 2	REV B		