



Chipsmall Limited consists of a professional team with an average of over 10 year of expertise in the distribution of electronic components. Based in Hongkong, we have already established firm and mutual-benefit business relationships with customers from,Europe,America and south Asia,supplying obsolete and hard-to-find components to meet their specific needs.

With the principle of “Quality Parts,Customers Priority,Honest Operation,and Considerate Service”,our business mainly focus on the distribution of electronic components. Line cards we deal with include Microchip,ALPS,ROHM,Xilinx,Pulse,ON,Everlight and Freescale. Main products comprise IC,Modules,Potentiometer,IC Socket,Relay,Connector.Our parts cover such applications as commercial,industrial, and automotives areas.

We are looking forward to setting up business relationship with you and hope to provide you with the best service and solution. Let us make a better world for our industry!



## Contact us

Tel: +86-755-8981 8866 Fax: +86-755-8427 6832

Email & Skype: info@chipsmall.com Web: www.chipsmall.com

Address: A1208, Overseas Decoration Building, #122 Zhenhua RD., Futian, Shenzhen, China

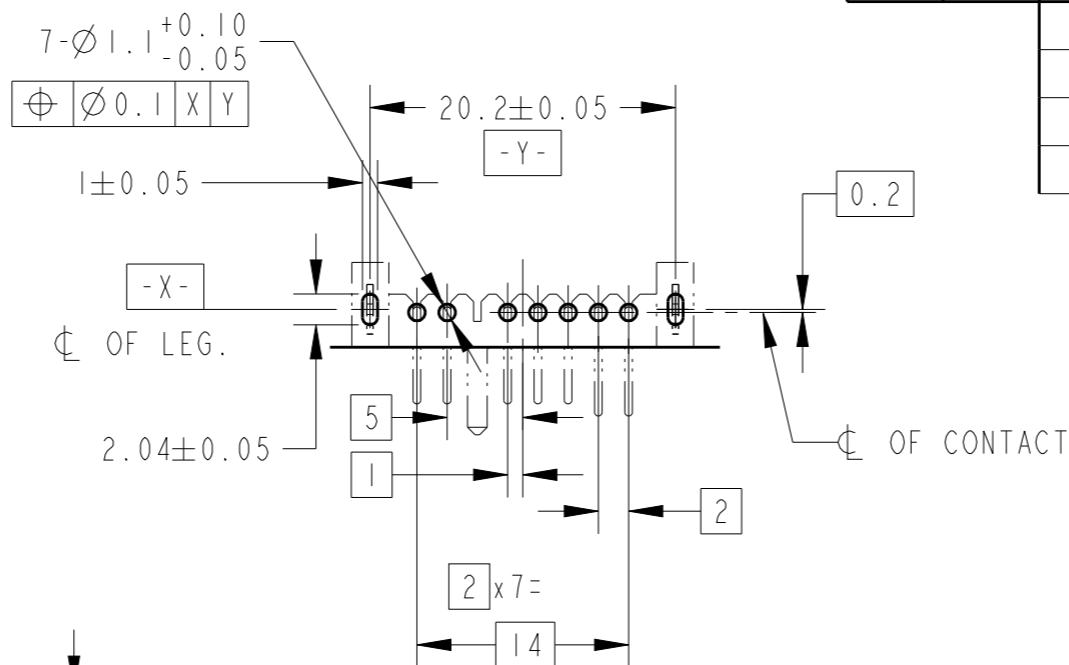
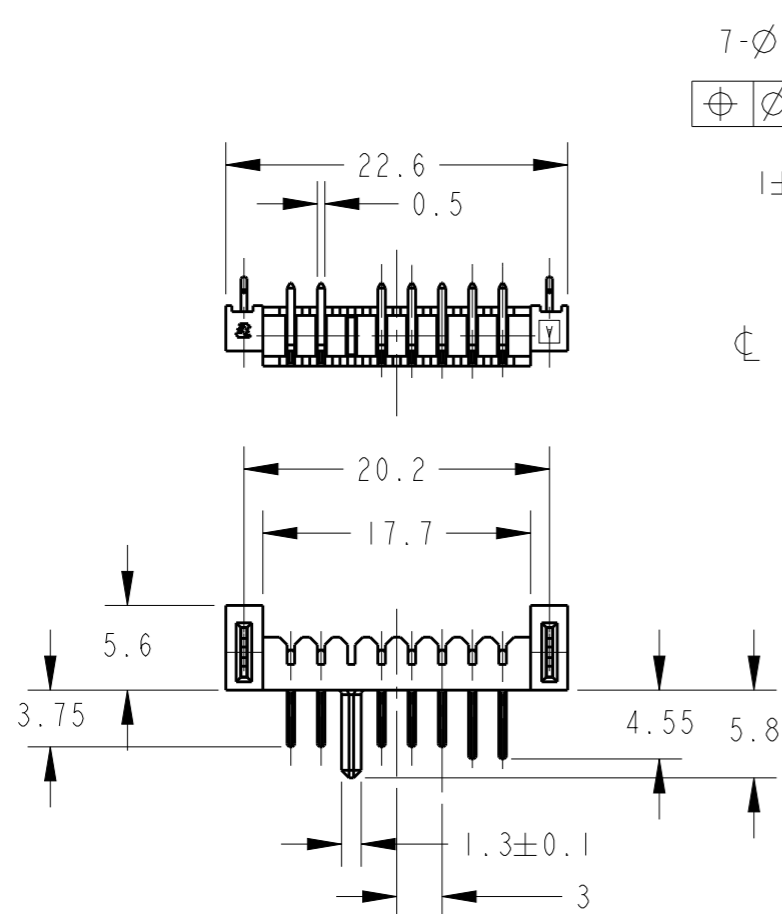


LOC  
ES

DIST  
-

REVISIONS

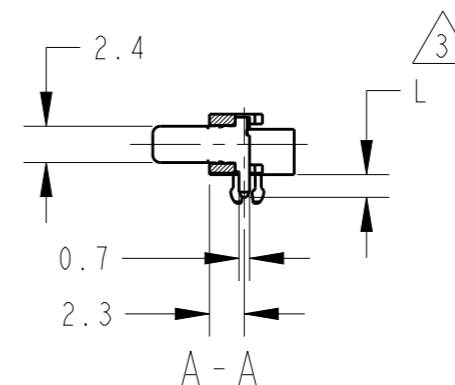
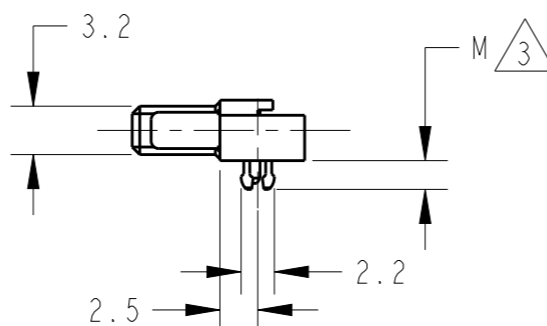
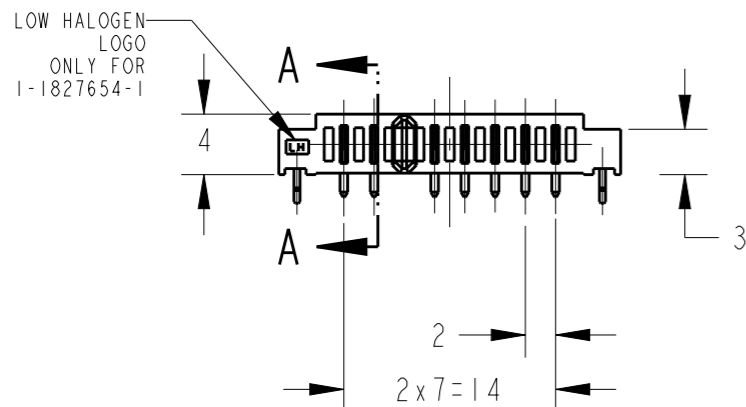
| P  | LTR | DESCRIPTION               | DATE      | DWN  | APVD |
|----|-----|---------------------------|-----------|------|------|
| D1 |     | REVISED PER ECO-11-005033 | 16APR2011 | RK   | HMR  |
| D2 |     | REVISED PER ECR-13-003041 | 20FEB2013 | E, L | S. Y |
| D3 |     | REVISED PER ECR-13-007095 | 26APR2013 | E. L | S. Y |



**1 MATERIAL**  
 CONTACT: COPPER ALLOY  
 HOUSING: THERMOPLASTIC RESIN UL94V-0 BLACK  
 RETENTION LEG: COPPER ALLOY

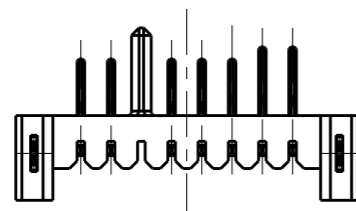
**2 FINISH**  
 CONTACT: NICKEL ALL OVER UNDER PLATING,  
 GOLD PLATING AT CONTACT AREA,  
 GOLD FLASH PLATING AT LEAD AREA,  
 RETENTION LEG: NICKEL ALL OVER UNDER PLATING,  
 TIN PLATING.

REFERENCE P.C BOARD LAYOUT  
 P.C. BOARD THK. 0.8~1.2  
 (VIEW FROM CONNECTOR MOUNTING SIDE)



1827654-1, 1-1827654-1: AS SHOWN

|   |         |         |             |
|---|---------|---------|-------------|
| THERMOPLASTIC RESIN<br>(LOW HALOGEN: BR<900PPM, CL<900PPM, BR+CL<1500ppm) | 1.9     | 1.5     | 1-1827654-1 |
| THERMOPLASTIC RESIN   | 2.6     | 2.1     | 1827654-2   |
| THERMOPLASTIC RESIN   | 1.9     | 1.5     | 1827654-1   |
| HOUSING MATERIAL  | DIM "M" | DIM "L" | P/N         |



THIS DRAWING IS A CONTROLLED DOCUMENT.

| DIMENSIONS: | TOLERANCES UNLESS OTHERWISE SPECIFIED: |
|-------------|--|
| mm          | ±0.3                                   |
| ∅ PLC       | ±                                      |
| 1 PLC       | ±0.1                                   |
| 2 PLC       | ±0.01                                  |
| 3 PLC       | ±0.001                                 |
| 4 PLC       | ±0.0001                                |
| ANGLES      | ±3°                                    |

MATERIAL SEE NOTE FINISH SEE NOTE

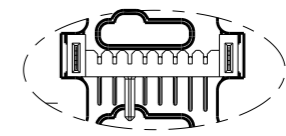
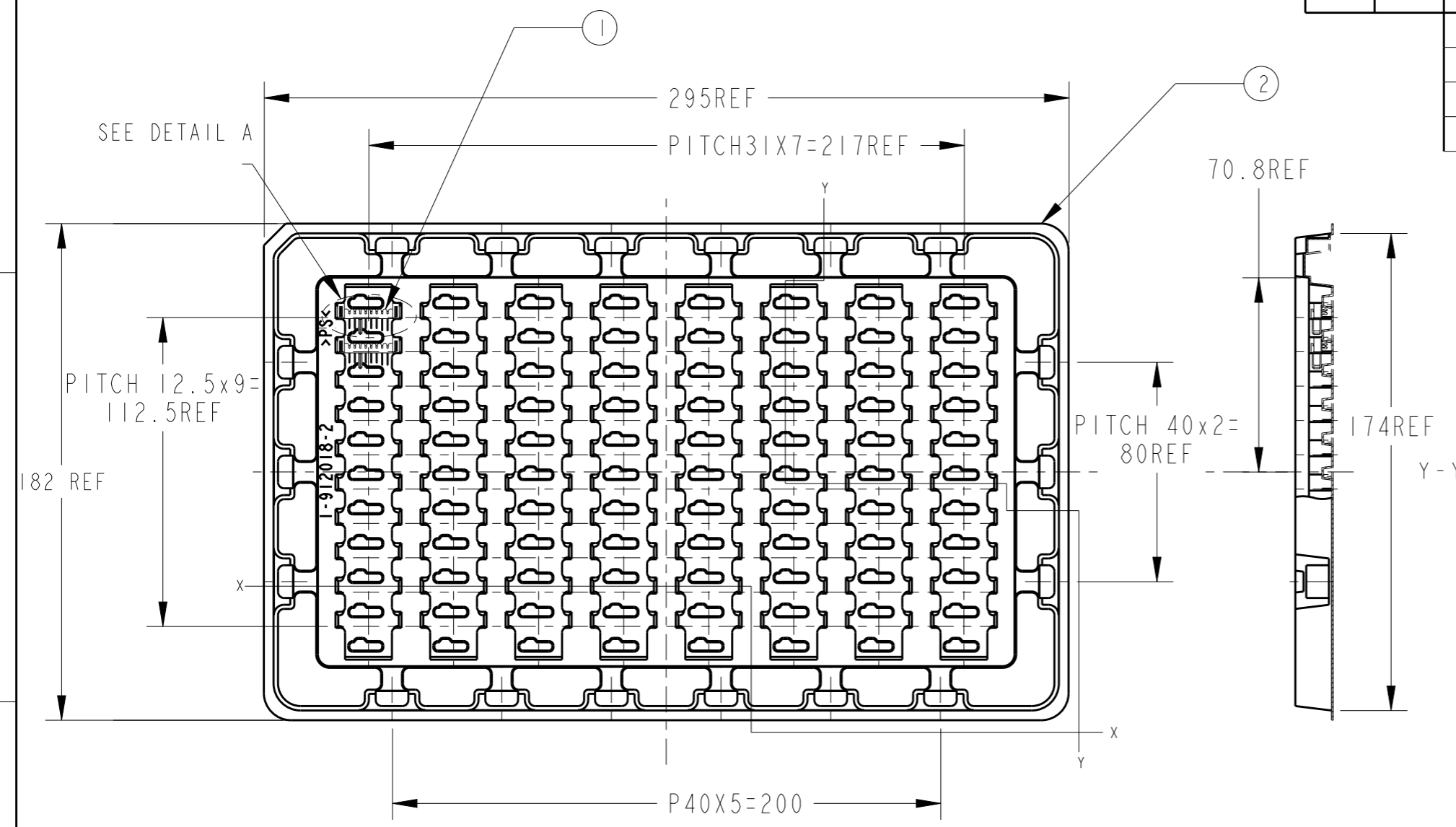
|                  |           |         |
|------------------|-----------|---------|
| DWN              | T. KATANO | 04JUL05 |
| CHK              | T. KIMURA | 04JUL05 |
| APVD             | T. KIMURA | 04JUL05 |
| PRODUCT SPEC     | 108-78292 |         |
| APPLICATION SPEC | -         |         |
| WEIGHT           | 1.0g      |         |

|  |           |            |               |
|--|-----------|------------|---------------|
| <b>STE</b> TE Connectivity                                 |           |            |               |
| NAME<br>PLUG ASSEMBLY 7POS.<br>2mm PITCH BATTERY CONNECTOR |           |            |               |
| SIZE   | CAGE CODE | DRAWING NO | RESTRICTED TO |
| A3   | 00779     | 1827654    | -             |

CUSTOMER DRAWING SCALE 2:1 SHEET 1 OF 2 REV D3

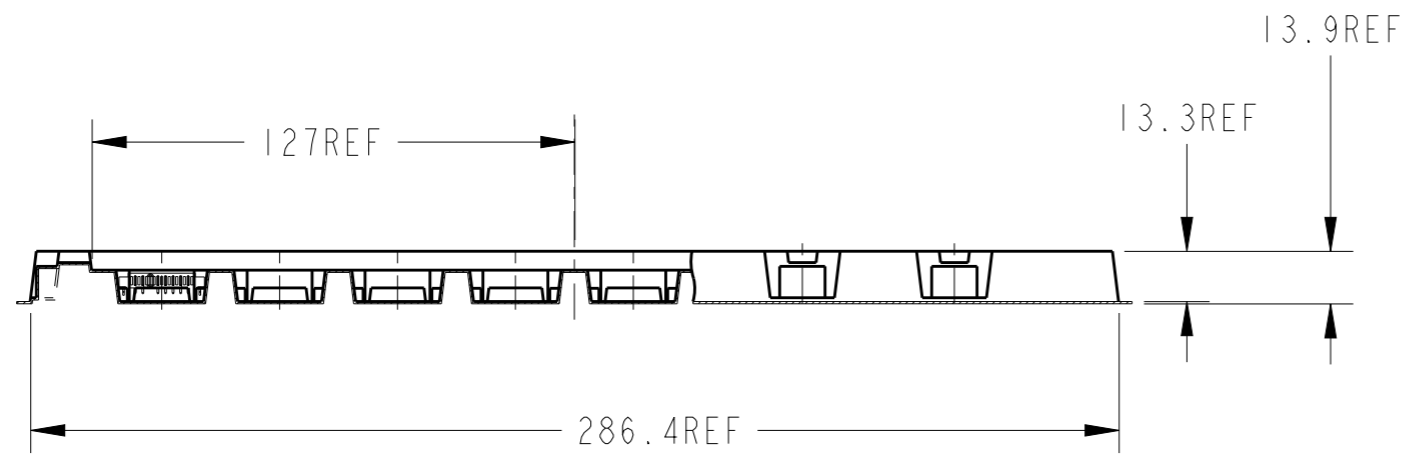
THIS DRAWING IS UNPUBLISHED. RELEASED FOR PUBLICATION 20  
 © COPYRIGHT 20 ALL RIGHTS RESERVED.

| LOC | DIST | REVISIONS   |      |     |      |
|-----|------|-------------|------|-----|------|
| P   | LTR  | DESCRIPTION | DATE | DWN | APVD |
| ES  | -    | SEE SHEET 1 | -    | -   | -    |




DETAIL A  
SCALE 1:1

AS SHOWN: 1827654-1/-2  
1-1827654-1



X-X

|   |  |                              |   |  |           |            |
|---|--|------------------------------|---|--|-----------|------------|
| THIS DRAWING IS A CONTROLLED DOCUMENT.  |  | DWN<br>T. KATANO<br>04JUL05  |  TE Connectivity | NAME   |           |            |
| DIMENSIONS:<br>mm   |  | CHK<br>T. KIMURA<br>04JUL05  |   | PLUG ASSEMBLY 7POS.<br>2mm PITCH BATTERY CONNECTOR |           |            |
| TOLERANCES UNLESS OTHERWISE SPECIFIED:  |  | APVD<br>T. KIMURA<br>04JUL05 |   | SIZE   | CAGE CODE | DRAWING NO |
| 0 PLC ±.0<br>1 PLC ±0.1<br>2 PLC ±0.01<br>3 PLC ±0.001<br>4 PLC ±0.0001<br>ANGLES ±3° |  | PRODUCT SPEC<br>108-78292    |   | A3   | 00779     | 1827654    |
| MATERIAL SEE NOTE   |  | FINISH SEE NOTE              | WEIGHT<br>1.0g  | RESTRICTED TO                                      |           |            |
| CUSTOMER DRAWING  |  |                              | SCALE<br>1:1  | SHEET<br>2 OF 2                                    | REV<br>D3 |            |