



Chipsmall Limited consists of a professional team with an average of over 10 year of expertise in the distribution of electronic components. Based in Hongkong, we have already established firm and mutual-benefit business relationships with customers from,Europe,America and south Asia,supplying obsolete and hard-to-find components to meet their specific needs.

With the principle of "Quality Parts,Customers Priority,Honest Operation,and Considerate Service",our business mainly focus on the distribution of electronic components. Line cards we deal with include Microchip,ALPS,ROHM,Xilinx,Pulse,ON,Everlight and Freescale. Main products comprise IC,Modules,Potentiometer,IC Socket,Relay,Connector.Our parts cover such applications as commercial,industrial, and automotives areas.

We are looking forward to setting up business relationship with you and hope to provide you with the best service and solution. Let us make a better world for our industry!



## Contact us

Tel: +86-755-8981 8866 Fax: +86-755-8427 6832

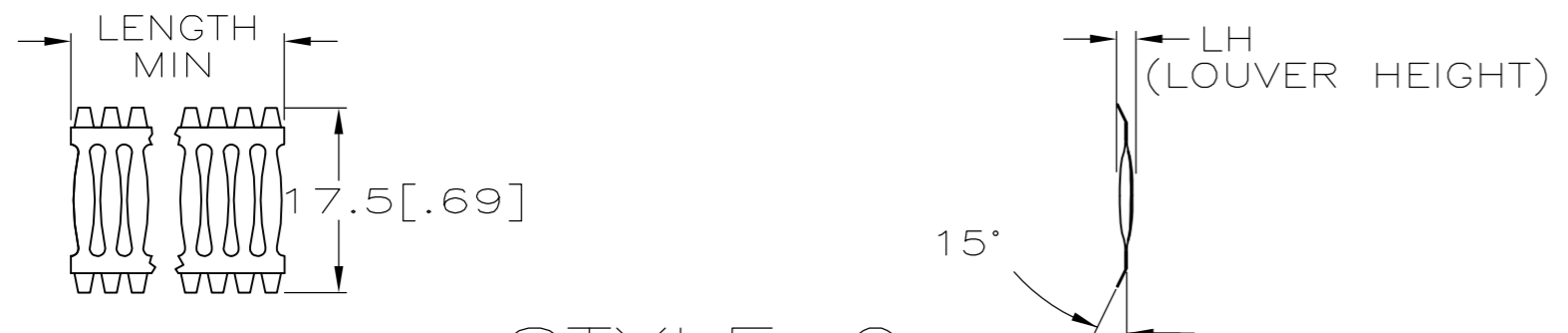
Email & Skype: info@chipsmall.com Web: www.chipsmall.com

Address: A1208, Overseas Decoration Building, #122 Zhenhua RD., Futian, Shenzhen, China

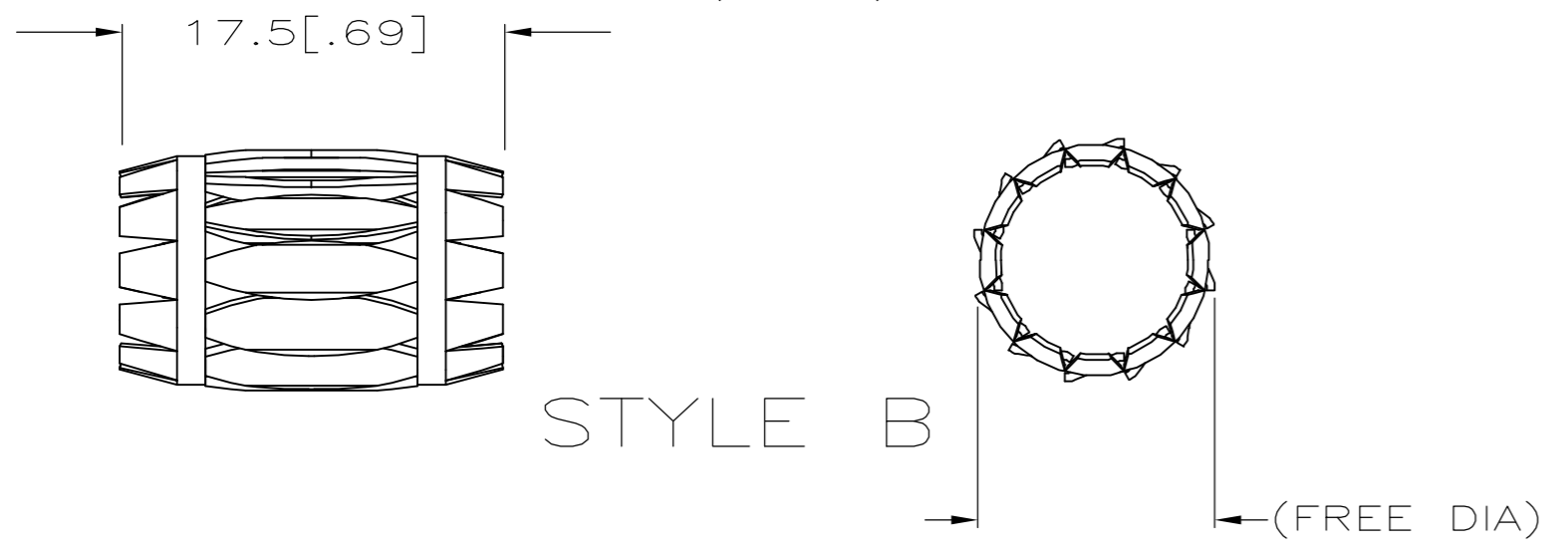


THIS DRAWING IS UNPUBLISHED. RELEASED FOR PUBLICATION  
 © COPYRIGHT - By - ALL RIGHTS RESERVED.

REVISIONS							
P	LTR	DESCRIPTION			DATE	DWN	APVD
	S	REVISED PER	ECO-17-013723		21SEP2017	RS	MZ



STYLE C (STRIP)



STYLE B

- FINISH: GOLD PLATE 10uIN MINIMUM.
- FINISH: SILVER PLATE 200 uIN MINIMUM.
- FINISH: NICKEL PLATE 40 uIN MINIMUM.
- FINISH: NICKEL PLATE 100 uIN MINIMUM.
- 
- 
- 
- NESTED AND WELDED 13 AND 14 LOUVERED BAND.
- 
- 
- PLATING NOTES ARE TO BE INTEREPRETED AS FOLLOWS:  
6-8 AS 6 OVER 8.
- PRODUCT IS SOLD BY THE FOOT. MINIMUM ORDER LENGTH IS 3 FEET.

- PRELIMINRY PART NUMBER.
- OBSOLETE PARTS: OBSOLETE CIS STREAMLINING PER D.RENAUD/D.SINISI

(FREE DIA)	STYLE	LH	MAT'L	MATING PIN Ø REF	LENGTH	PLATING	NUM LOUV	MAT'L THK	REF	PART NUMBER	
△14	OBSOLETE	[.72]	B	[.050]	BeCu	19.7[.775]	2-3	23	0.15[.006]	5-192007-4	
	OBSOLETE	[.72]	B	[.052]	BeCu	19.7[.775]	2-3	23	0.20[.008]	5-192007-0	
	OBSOLETE	-	C	[.052]	BeCu	-	NOTE 12	2-3	0.20[.008]	4-192007-9	
	OBSOLETE	[.50]	△8 B	--	BeCu	12.7[.500]	PREPL	△8 27	0.10[.004]	4-192007-8	
	OBSOLETE	[1.42]	B	[.048]	BeCu	38.1[1.500]	UNPL	45	0.08[.003]	4-192007-7	
	OBSOLETE	[1.04]	B	[.048]	BeCu	28.5[1.121]	UNPL	33	0.08[.003]	4-192007-6	
	OBSOLETE	[.82]	B	[.048]	BeCu	22.2[.875]	UNPL	26	0.08[.003]	4-192007-5	
	△14	[1.42]	B	[.050]	BeCu	38.1[1.500]	2-3	45	0.15[.006]	4-192007-4	
	OBSOLETE	[1.71]	B	[.050]	BeCu	44.4[1.750]	2-3	54	0.15[.006]	01305 4-192007-2	
	OBSOLETE	[1.42]	B	[.048]	BeCu	38.1[1.500]	2-3	45	0.08[.003]	01284 4-192007-1	
	OBSOLETE	[1.39]	B	[.050]	BeCu	34.9[1.375]	2-3	44	0.10[.004]	01307 4-192007-0	
	△14	[1.32]	B	[.052]	BeCu	34.9[1.375]	2-3	42	0.20[.008]	01196 3-192007-9	
		[1.32]	B	[.050]	BeCu	34.9[1.375]	2-3	42	0.15[.006]	01309 3-192007-8	
		[1.07]	B	[.050]	BeCu	28.6[1.129]	2-3	34	0.15[.006]	01301 3-192007-7	
△14	OBSOLETE	[1.04]	B	[.048]	BeCu	28.5[1.121]	2-3	33	0.08[.003]	01285 3-192007-6	
	OBSOLETE	[1.00]	B	[.050]	BeCu	27.1[1.068]	2-3	32	0.15[.006]	01263 3-192007-5	
	OBSOLETE								01187	3-192007-4	
	△14	[.94]	B	[.052]	BeCu	25.4[1.000]	2-3	30	0.20[.008]	01178 3-192007-2	
		[.94]	B	[.050]	BeCu	25.4[1.000]	2-3	30	0.15[.006]	01177 3-192007-1	
	OBSOLETE	[.94]	B	[.050]	BeCu	25.4[1.000]	UNPL	30	0.15[.006]	01240 3-192007-0	
	△14	[1.70]	B	[.050]	BeCu	22.2[.875]	2-3	26	0.15[.006]	01170 2-192007-9	
		[.78]	B	[.050]	BeCu	22.2[.875]	2-3	25	0.15[.006]	01169 2-192007-8	
		[.81]	B	[.050]	BeCu	22.2[.875]	2-3	26	0.10[.004]	01276 2-192007-7	
	OBSOLETE	[.81]	B	[.048]	BeCu	22.2[.875]	2-3	26	0.08[.003]	01302 2-192007-6	
	OBSOLETE	[.69]	B	[.052]	BeCu	19[.750]	2-3	22	0.20[.008]	01318 2-192007-5	
	OBSOLETE	[.65]	B	[.050]	BeCu	17.4[.687]	2-3	21	0.15[.006]	01150 2-192007-4	
	△14	[.56]	B	[.050]	BeCu	15.9[.625]	2-3	18	0.15[.006]	01298 2-192007-3	
		[.53]	B	[.052]	BeCu	15.7[.620]	2-3	17	0.20[.008]	01313 2-192007-2	
	OBSOLETE								01146	2-192007-1	
△14	OBSOLETE	--	C	[.050]	BeCu	--	NOTE 12	1-3	--	0.15[.006]	-- 2-192007-0
		[.53]	B	[.050]	BeCu	15.7[.620]	2-3	17	0.15[.006]	01145 1-192007-9	
		[.53]	B	[.050]	BeCu	15.7[.620]	UNPL	17	0.15[.006]	01241 1-192007-8	
		[.50]	B	[.050]	BeCu	12.7[.500]	1-3	14	0.15[.006]	01290 1-192007-7	
		[.50]	B	[.050]	BeCu	12.7[.500]	4	14	0.15[.006]	01291 1-192007-6	
	OBSOLETE	[.50]	B	[.050]	BeCu	12.7[.500]	2-3	14	0.15[.006]	01138 1-192007-4	
	△14	[.50]	B	[.050]	BeCu	12.7[.500]	UNPL	14	0.15[.006]	01235 1-192007-3	
		[.50]	B	[.046]	BeCu	12.7[.500]	UNPL	14	0.08[.003]	01296 1-192007-2	
		[.43]	B	[.050]	BeCu	11.1[.437]	2-3	12	0.15[.006]	01133 1-192007-1	
		[.34]	B	[.050]	BeCu	7.9[.312]	2-3	9	0.15[.006]	01115 1-192007-0	
	OBSOLETE	[.30]	B	[.050]	BeCu	7.9[.312]	2-3	8	0.15[.006]	01119 1-192007-9	
△14	OBSOLETE	--	C	[.050]	BeCu	--	4.90 IN	2-3	49	0.15[.006]	01038 1-192007-8
		--	C	[.050]	BeCu	--	NOTE 12	2-3	--	0.15[.006]	01010 1-192007-7
△14	OBSOLETE	--	C	[.050]	BeCu	--	66 FT	UNPL	--	0.15[.006]	-- 1-192007-6
	OBSOLETE	--	C	[.050]	BeCu	--	66 FT	UNPL	--	0.15[.006]	01019 1-192007-5
	OBSOLETE	--	C	[.050]	BeCu	--	66 FT	2-3	--	0.10[.004]	01016 1-192007-4
△14	OBSOLETE	--	C	[.050]	BeCu	--	66 FT	UNPL	--	0.10[.004]	01018 1-192007-3
	OBSOLETE	--	C	[.046]	BeCu	--	66 FT	2-3	--	0.08[.003]	01000 1-192007-2
	OBSOLETE	--	C	[.046]	BeCu	--	NOTE 12	UNPL	--	0.08[.003]	01024 1-192007-1

THIS DRAWING IS A CONTROLLED DOCUMENT.

DIMENSIONS: mm [INCHES]	TOLERANCES UNLESS OTHERWISE SPECIFIED: 0 PLC ± - 1 PLC ± - 2 PLC ± 0.5[.02] 3 PLC ± 0.25[.010] 4 PLC ± - ANGLES ± -	DWN S.URICH 25JAN01 CHK G.STEINHAUER 25JAN01 APVD G.STEINHAUER 25JAN01 PRODUCT SPEC APPLICATION SPEC WEIGHT -	NAME CONTACT BAND, MALE SIZE A2 CAGE CODE 00779 DRAWING NO C=192007 RESTRICTED TO -
MATERIAL SEE TABLE	FINISH SEE TABLE	CUSTOMER DRAWING	SCALE NTS SHEET 1 OF 1 REV S

TE Connectivity