



Chipsmall Limited consists of a professional team with an average of over 10 year of expertise in the distribution of electronic components. Based in Hongkong, we have already established firm and mutual-benefit business relationships with customers from,Europe,America and south Asia,supplying obsolete and hard-to-find components to meet their specific needs.

With the principle of "Quality Parts,Customers Priority,Honest Operation,and Considerate Service",our business mainly focus on the distribution of electronic components. Line cards we deal with include Microchip,ALPS,ROHM,Xilinx,Pulse,ON,Everlight and Freescale. Main products comprise IC,Modules,Potentiometer,IC Socket,Relay,Connector.Our parts cover such applications as commercial,industrial, and automotives areas.

We are looking forward to setting up business relationship with you and hope to provide you with the best service and solution. Let us make a better world for our industry!



## Contact us

Tel: +86-755-8981 8866 Fax: +86-755-8427 6832

Email & Skype: info@chipsmall.com Web: www.chipsmall.com

Address: A1208, Overseas Decoration Building, #122 Zhenhua RD., Futian, Shenzhen, China



4

3

2

1

THIS DRAWING IS UNPUBLISHED.

RELEASED FOR PUBLICATION

2011

© COPYRIGHT 2011

ALL RIGHTS RESERVED.

LOC  
FTDIST  
0

REVISIONS

P	LTR	DESCRIPTION	DATE	DWN	APVD
	B	REVISED PER ECO-12-016949	21SEP2012	KH	MB

TERMINAL PLATE

1.50

5.00

0.50

1.25

0.50

2.50

14.80

11.80

0.80

3.30

5.00

SCALE 2:1  
-4 AS SHOWN

1 SEE FIG			
46.50	9	2-1986711-6	
126.50	25	2-1986711-5	
121.50	24	2-1986711-4	
116.50	23	2-1986711-3	
111.50	22	2-1986711-2	
106.50	21	2-1986711-1	
101.50	20	2-1986711-0	
96.50	19	1-1986711-9	
91.50	18	1-1986711-8	
86.50	17	1-1986711-7	
81.50	16	1-1986711-6	
76.50	15	1-1986711-5	
71.50	14	1-1986711-4	
66.50	13	1-1986711-3	
61.50	12	1-1986711-2	
56.50	11	1-1986711-1	
51.50	10	1-1986711-0	
46.50	9	1986711-9	
41.50	8	1986711-8	
36.50	7	1986711-7	
31.50	6	1986711-6	
26.50	5	1986711-5	
21.50	4	1986711-4	
16.50	3	1986711-3	
11.50	2	1986711-2	
"L"	POLE	PART NO	

PRELIMINARY PART

MATERIALS:  
HOUSING - POLYAMIDE, COLOR - GREEN  
CLAMPING SPRING - STEEL  
PIN - COPPER ALLOY - TIN PLATED

MECHANICAL  
PCB THICKNESS - 2.40 MAX  
PCB HOLE DIAMETER - 1.20 MIN  
STRIP LENGTH - 10-11 MM  
OPERATING TEMPERATURE - -40 °C TO +110 °C

ELECTRICAL  
WIRE RANGE- 30 TO 12 AWG  
VOLTAGE RATING- 300 VOLTS  
CURRENT RATING-16 AMP  
CONTACT RESISTANCE-15 MILLOHM MAX  
INSULATION RESISTANCE-10<sup>9</sup> OHMS MIN (500V DC)

PCB LAYOUT

2.50

5.00

5.00

5.00

5.00

Ø1.00<sup>+0.20</sup>

THIS DRAWING IS A CONTROLLED DOCUMENT.

DIMENSIONS:	TOLERANCES UNLESS OTHERWISE SPECIFIED:
mm	
0 PLC	±
1 PLC	±0.5
2 PLC	±0.25
3 PLC	±
4 PLC	±
ANGLES	±1°
MATERIAL	FINISH
-	-

DWN 08AUG2011

RAGHAVENDRA

CHK 08AUG2011

SARVER MICHAEL

APVD 08AUG2011

SARVER MICHAEL

PRODUCT SPEC

-

APPLICATION SPEC

-

WEIGHT

-

NAME

**STE** TE Connectivity

SPRING TYPE, SIDE WIRE ENTRY  
TERMINAL BLOCK SIDE STACKABLE  
STRAIGHT 02 - 25 POLES PITCH 5.00mm

SIZE

CAGE CODE

DRAWING NO

RESTRICTED TO

A3

00779

C-1986711

-

CUSTOMER DRAWING

SCALE 1:1

SHEET 1 OF 2

REV B

1470-19 (3/11)

THIS DRAWING IS UNPUBLISHED.

RELEASED FOR PUBLICATION

2011

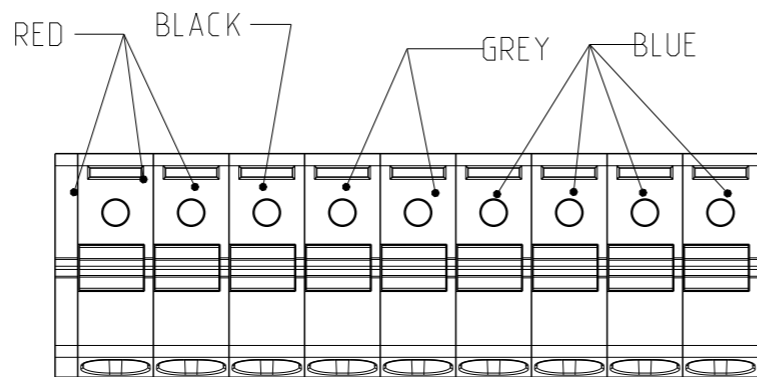
© COPYRIGHT 2011

ALL RIGHTS RESERVED.

LOC FT DIST 0

REVISIONS

P	LTR	DESCRIPTION	DATE	DWN	APVD
-		SEE SHEET 1	-	-	-

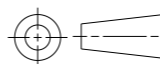


2-1986711-6

THIS DRAWING IS A CONTROLLED DOCUMENT.

DIMENSIONS:

mm



TOLERANCES UNLESS OTHERWISE SPECIFIED:

- 0 PLC ±
- 1 PLC ±0.5
- 2 PLC ±0.25
- 3 PLC ±
- 4 PLC ±
- ANGLES ±1°

MATERIAL

-

FINISH

-

DWN 08AUG2011 RAGHAVENDRA

CHK 08AUG2011 SARVER MICHAEL

APVD 08AUG2011 SARVER MICHAEL

PRODUCT SPEC

-

APPLICATION SPEC

-

WEIGHT

-

NAME

SPRING TYPE. SIDE WIRE ENTRY  
TERMINAL BLOCK SIDE STACKABLE  
STRAIGHT 02 - 25 POLES PITCH 5.00mm

SIZE

CAGE CODE

DRAWING NO

RESTRICTED TO

A3

00779

C-1986711

-

CUSTOMER DRAWING

SCALE 1:1

SHEET 2 OF 2

REV B