



Chipsmall Limited consists of a professional team with an average of over 10 year of expertise in the distribution of electronic components. Based in Hongkong, we have already established firm and mutual-benefit business relationships with customers from,Europe,America and south Asia,supplying obsolete and hard-to-find components to meet their specific needs.

With the principle of “Quality Parts,Customers Priority,Honest Operation,and Considerate Service”,our business mainly focus on the distribution of electronic components. Line cards we deal with include Microchip,ALPS,ROHM,Xilinx,Pulse,ON,Everlight and Freescale. Main products comprise IC,Modules,Potentiometer,IC Socket,Relay,Connector.Our parts cover such applications as commercial,industrial, and automotives areas.

We are looking forward to setting up business relationship with you and hope to provide you with the best service and solution. Let us make a better world for our industry!



## Contact us

Tel: +86-755-8981 8866 Fax: +86-755-8427 6832

Email & Skype: [info@chipsmall.com](mailto:info@chipsmall.com) Web: [www.chipsmall.com](http://www.chipsmall.com)

Address: A1208, Overseas Decoration Building, #122 Zhenhua RD., Futian, Shenzhen, China



4

3

2

1

THIS DRAWING IS UNPUBLISHED.

RELEASED FOR PUBLICATION

- , -



COPYRIGHT - By -

ALL RIGHTS RESERVED.

LOC

DIST

REVISIONS

P

LTR

DESCRIPTION

DATE

DWN

APVD

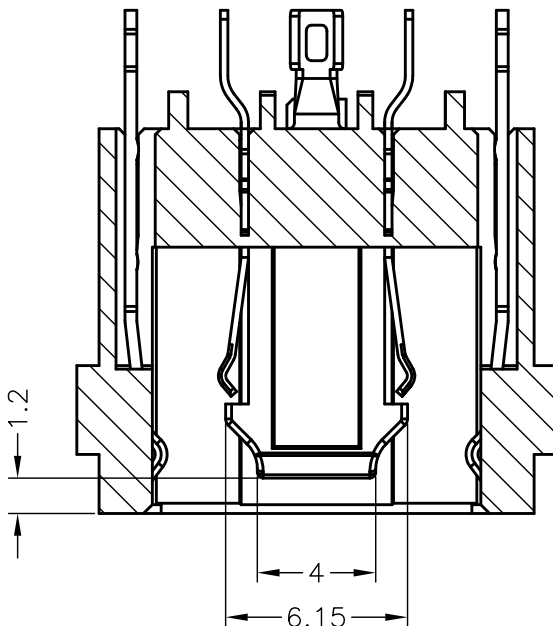
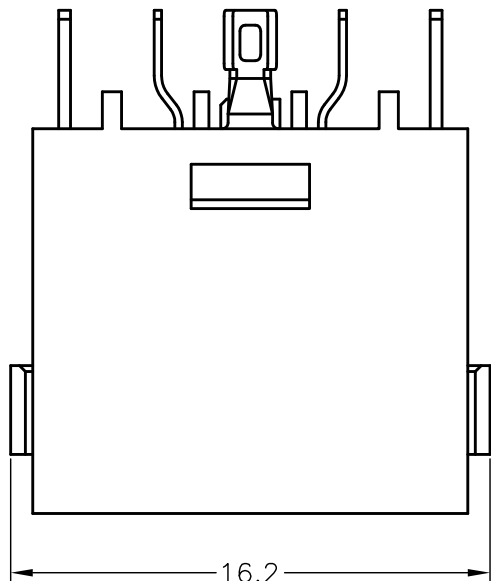
B4

REVISED (ECR-13-009702)

14MAR13

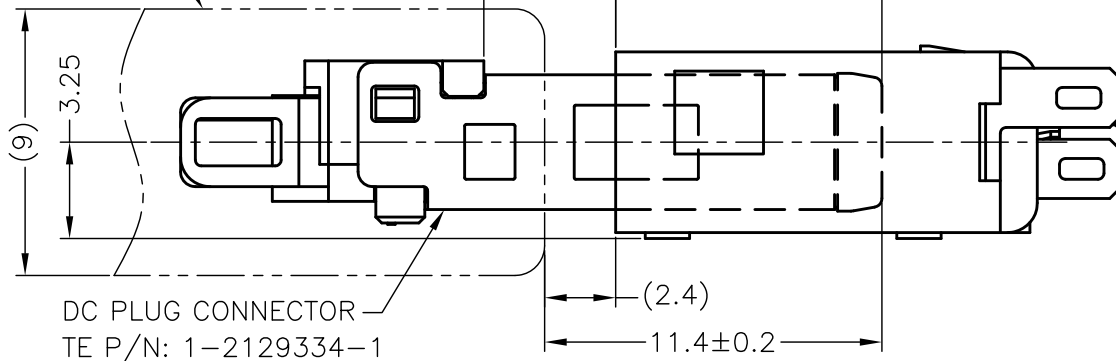
S.H

V.P



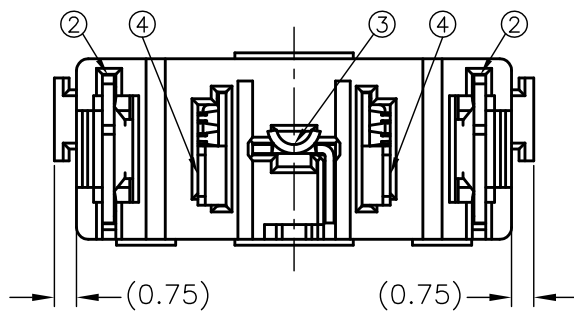
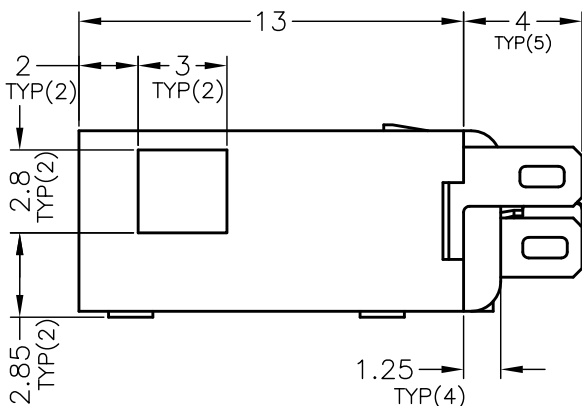
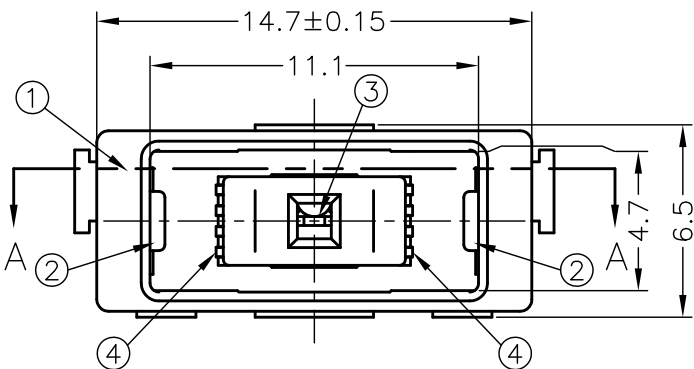
A-A

PLUG OVERMOLD



DC PLUG CONNECTOR  
TE P/N: 1-2129334-1

MATING CONDITION



A'SSY P/N			
1-2129333-2	1-2129333-1	2129333-2	2129333-1
2	2	2	2
1	1	1	1
2	2	2	2
1			
	1		1
Q'TY			

0.0002mm GOLD PLATING ON CONTACT AREA, 0.002mm MATTE TIN PLATING ON SOLDER AREA, 0.002mm MIN. NICKEL UNDERPLATED ALL OVER

0.0002mm GOLD PLATING ON CONTACT AREA, 0.002mm MATTE TIN PLATING ON SOLDER AREA, 0.002mm MIN. NICKEL UNDERPLATED ALL OVER

0.0002mm GOLD PLATING ON CONTACT AREA, 0.002mm MATTE TIN PLATING ON SOLDER AREA, 0.002mm MIN. NICKEL UNDERPLATED ALL OVER

BLACK

YELLOW

FINISH/COLOR

COPPER ALLOY

POWER CONTACT

④

COPPER ALLOY

DETECT CONTACT

③

COPPER ALLOY

GROUND CONTACT

②

HIGH TEMPERATURE  
THERMO-PLASTIC  
(UL94V-0)

HOUSING

①

HOUSING

①

MATERIAL

PART NAME

NO.

THIS DRAWING IS A CONTROLLED DOCUMENT.

DWN 24FEB2012

S.HUANG

CHK 24FEB2012

V.PENG

APVD 24FEB2012

W.KODAMA

PRODUCT SPEC

108-99035

APPLICATION SPEC

501-99040

WEIGHT

CUSTOMER DRAWING



TE Connectivity

DC POWER JACK CONNECTOR  
CABLE TYPE

SIZE

CAGE CODE

DRAWING NO

RESTRICTED TO

A3

00779

2129333

SCALE

4:1

SHEET

1 OF 2

REV

B4

DIMENSIONS:

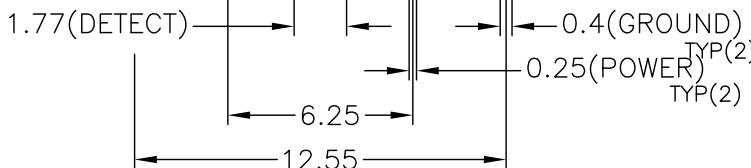
mm

TOLERANCES UNLESS  
OTHERWISE SPECIFIED:

0-PLC ±  
1-PLC ±  
2-PLC ±0.25  
3-PLC ±3  
4-PLC ±  
ANGLES ±  
FINISH

MATERIAL

SEE TABLE



THIS DRAWING IS UNPUBLISHED.

RELEASED FOR PUBLICATION

- , -



COPYRIGHT - By -

ALL RIGHTS RESERVED.

LOC

DIST

REVISIONS

P

LTR

DESCRIPTION

DATE

DWN

APVD

-

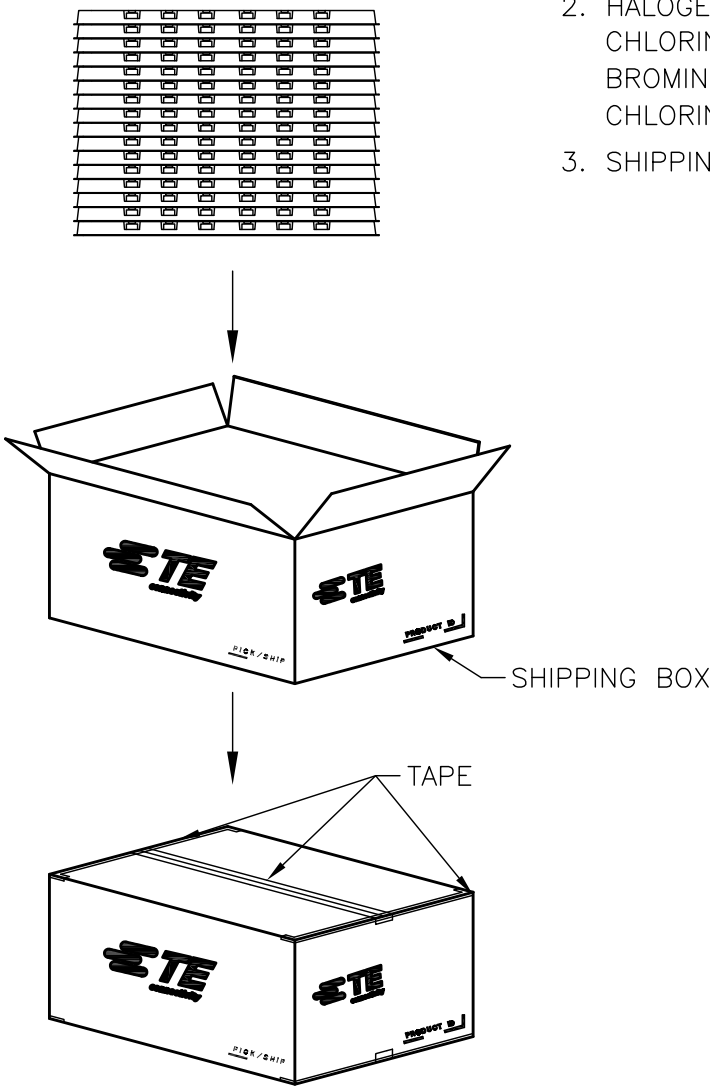
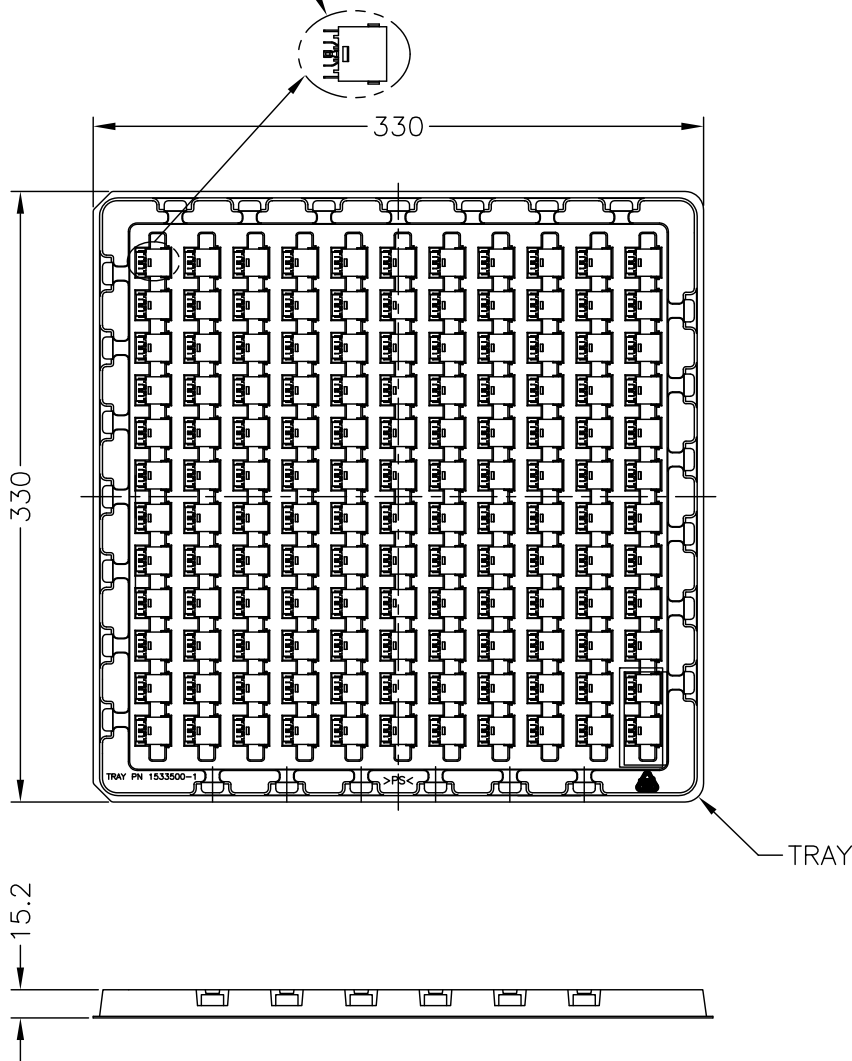
SEE SHEET 1

-

-

-

DC POWER JACK CONNECTOR  
TE P/N: 1-2129333-1/-2



1. EU ROHS-RELATED RESTRICTED SUBSTANCE SPEC IN HOMOGENEOUS MATERIAL REFER TO TEC-138-702 REV.G:  
LEAD < 1000PPM, CADMIUM < 100PPM, MERCURY < 1000PPM  
CHROMIUM VI < 1000PPM, PBB <1000PPM, PBDE < 1000PPM
2. HALOGEN FREE SPEC:  
CHLORINE (Cl): 900 ppm MAX.  
BROMINE (Br): 900 ppm MAX.  
CHLORINE (Cl) + BROMINE (Br): 1500 ppm MAX.
3. SHIPPING BOX DIMENSION: 445mmX445mmX270mm

132	25	3300
PCS/TRAY	TRAY/SHIPPING BOX	TOTAL Q'TY

THIS DRAWING IS A CONTROLLED DOCUMENT.		DWN CHK APVD		TE Connectivity	
DIMENSIONS: mm		TOLERANCES UNLESS OTHERWISE SPECIFIED: 0 PLC ± - 1 PLC ± - 2 PLC ± 0.25 3 PLC ± 3 4 PLC ± - ANGLES ± - FINISH		NAME DC POWER JACK CONNECTOR CABLE TYPE	
MATERIAL		PRODUCT SPEC APPLICATION SPEC WEIGHT		SIZE A3	
		CUSTOMER DRAWING		CAGE CODE 00779	
				DRAWING NO C-2129333	
				RESTRICTED TO	
				SCALE NA	
				SHEET 2 OF 2	
				REV B4	