



Chipsmall Limited consists of a professional team with an average of over 10 year of expertise in the distribution of electronic components. Based in Hongkong, we have already established firm and mutual-benefit business relationships with customers from,Europe,America and south Asia,supplying obsolete and hard-to-find components to meet their specific needs.

With the principle of “Quality Parts,Customers Priority,Honest Operation,and Considerate Service”,our business mainly focus on the distribution of electronic components. Line cards we deal with include Microchip,ALPS,ROHM,Xilinx,Pulse,ON,Everlight and Freescale. Main products comprise IC,Modules,Potentiometer,IC Socket,Relay,Connector.Our parts cover such applications as commercial,industrial, and automotives areas.

We are looking forward to setting up business relationship with you and hope to provide you with the best service and solution. Let us make a better world for our industry!



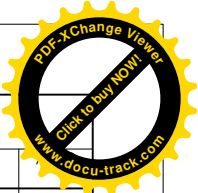
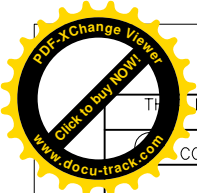
## Contact us

Tel: +86-755-8981 8866 Fax: +86-755-8427 6832

Email & Skype: [info@chipsmall.com](mailto:info@chipsmall.com) Web: [www.chipsmall.com](http://www.chipsmall.com)

Address: A1208, Overseas Decoration Building, #122 Zhenhua RD., Futian, Shenzhen, China





4

3

2

1

THIS DRAWING IS UNPUBLISHED.

RELEASED FOR PUBLICATION

- - -

LOC

DIST

REVISIONS

COPYRIGHT - By -

ALL RIGHTS RESERVED.

DW

P

LTR

DESCRIPTION

DATE

DWN

J.L

B4

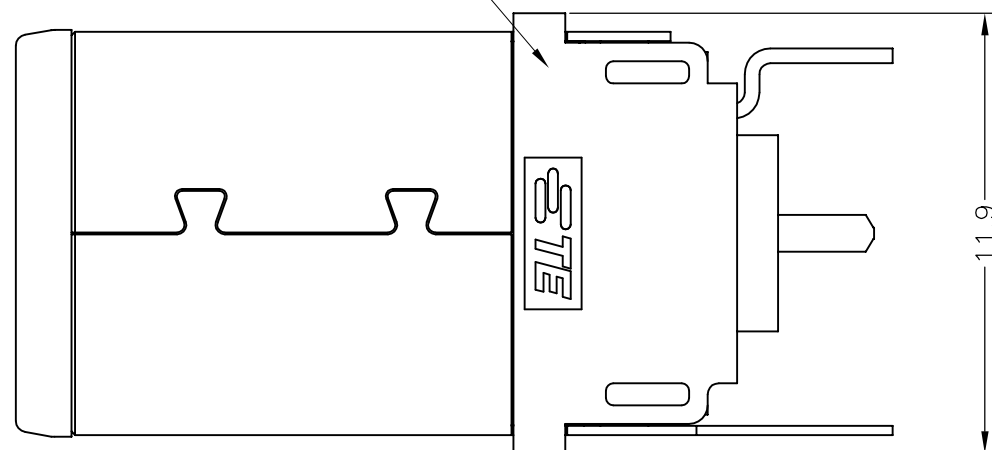
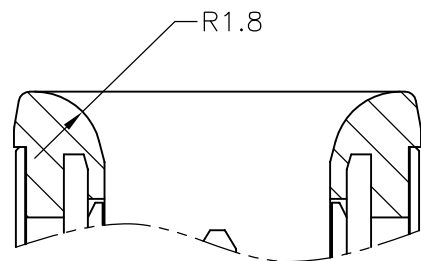
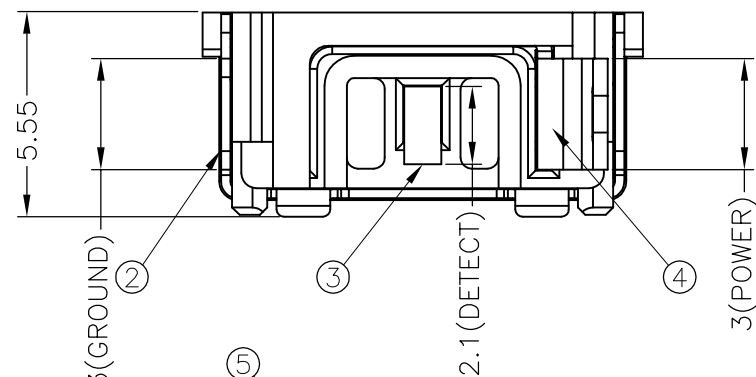
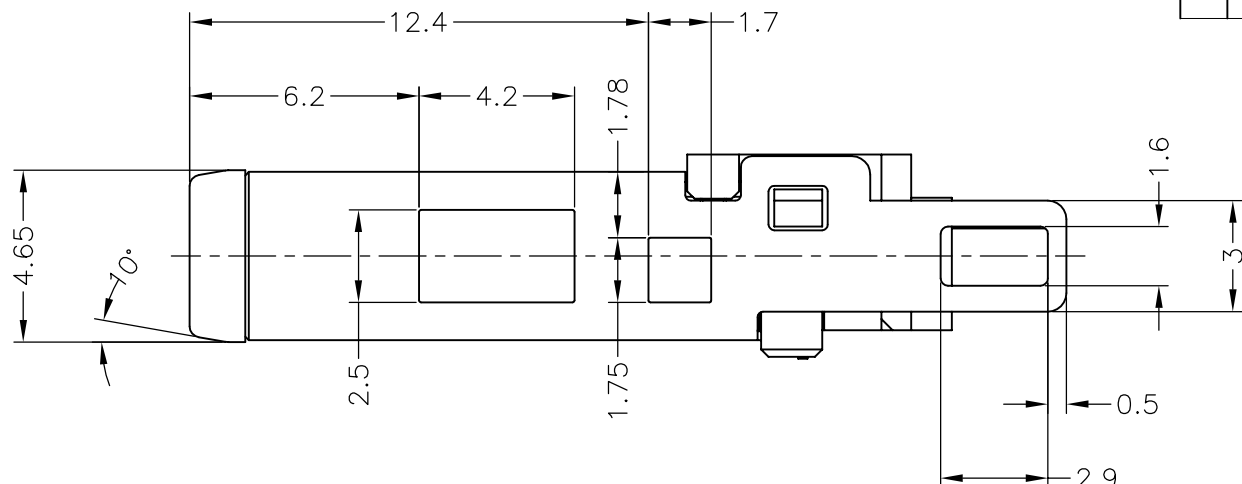
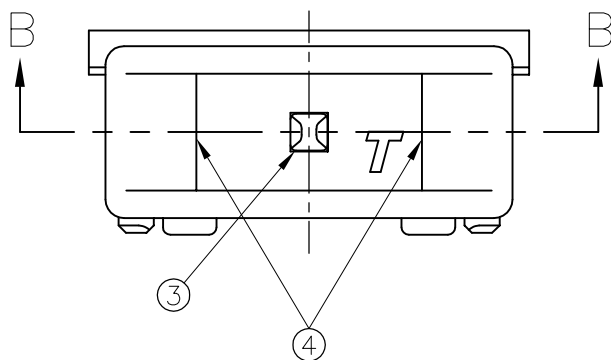
REVISED (ECR-15-011639)

21AUG15

J.Z

J.L

VIEW A



VIEW A (CW90°)

B-B

A'SSY P/N		
1-2129334-2	1-2129334-1	2129334
1	1	NATURAL
1	1	0.0002mm GOLD PLATING ON CONTACT AREA, 0.002mm MATTE TIN PLATING ON SOLDER AREA, 0.002mm MIN. NICKEL UNDERPLATED ALL OVER
1	1	0.0002mm GOLD PLATING ON CONTACT AREA, 0.002mm MATTE TIN PLATING ON SOLDER AREA, 0.002mm MIN. NICKEL UNDERPLATED ALL OVER
1	1	0.002mm MATTE TIN PLATING ON SOLDER AREA, 0.002mm MIN. NICKEL UNDERPLATED ALL OVER
1	-	BLACK
-	1	YELLOW
Q'TY		

THIS DRAWING IS A CONTROLLED DOCUMENT.

DWN 24FEB2012

S.HUANG

CHK 24FEB2012

V.PENG

APVD 24FEB2012

W.KODAMA

PRODUCT SPEC

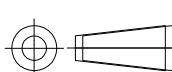
APPLICATION SPEC

WEIGHT

CUSTOMER DRAWING

DIMENSIONS:

mm



MATERIAL

SEE TABLE

TOLERANCES UNLESS OTHERWISE SPECIFIED:

0 PLC	±
1 PLC	±
2 PLC	±0.25
3 PLC	±3°
4 PLC	±
ANGLES	±
FINISH	±

FINISH/COLOR

TE Connectivity

DC POWER PLUG CONNECTOR

SIZE

CAGE CODE

DRAWING NO

RESTRICTED TO

A3

00779

C-2129334

SCALE

5:1

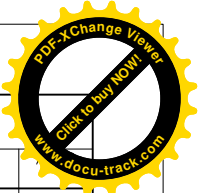
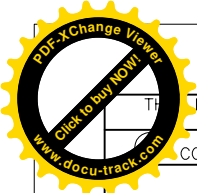
SHEET

1 of 2

REV

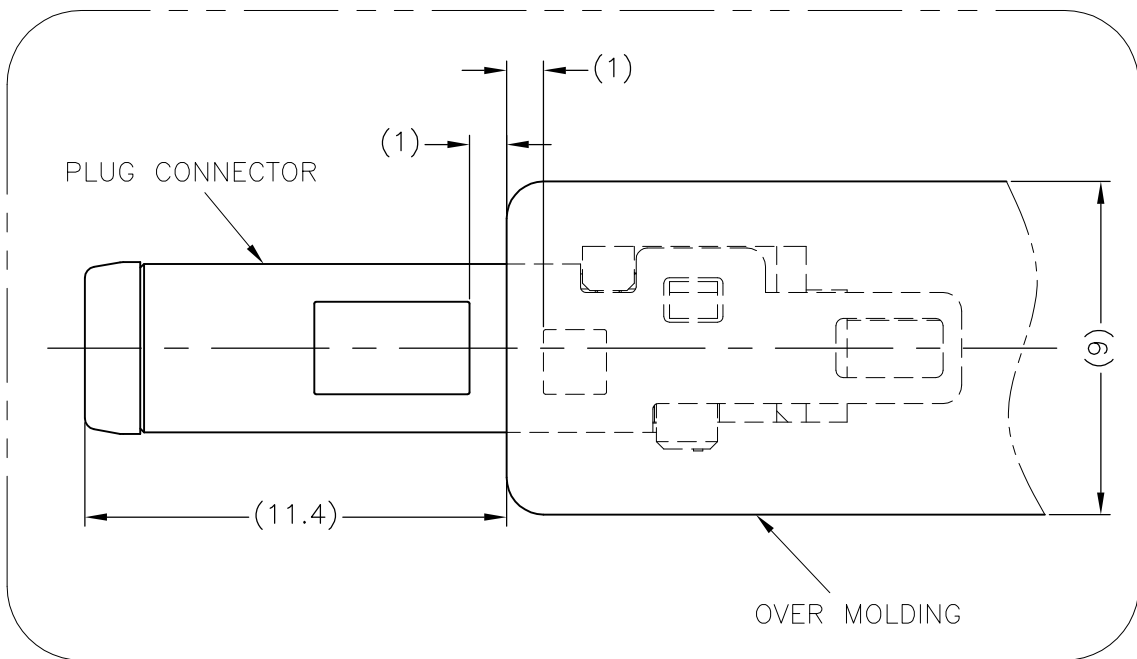
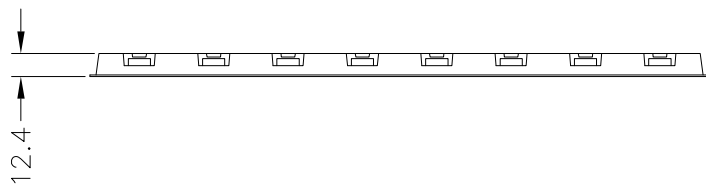
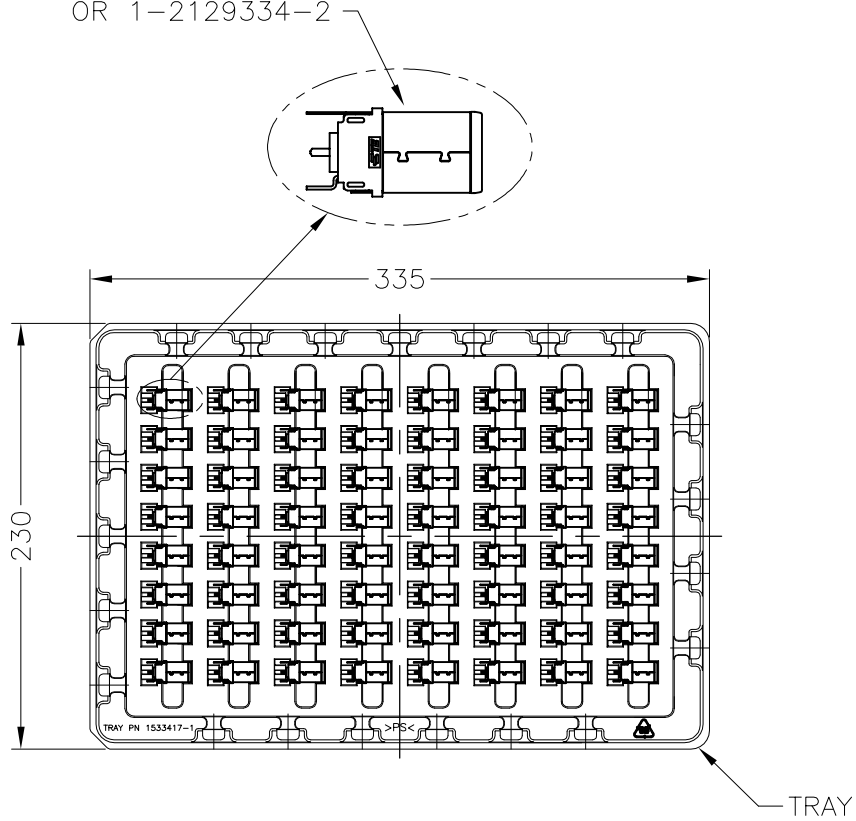
B4



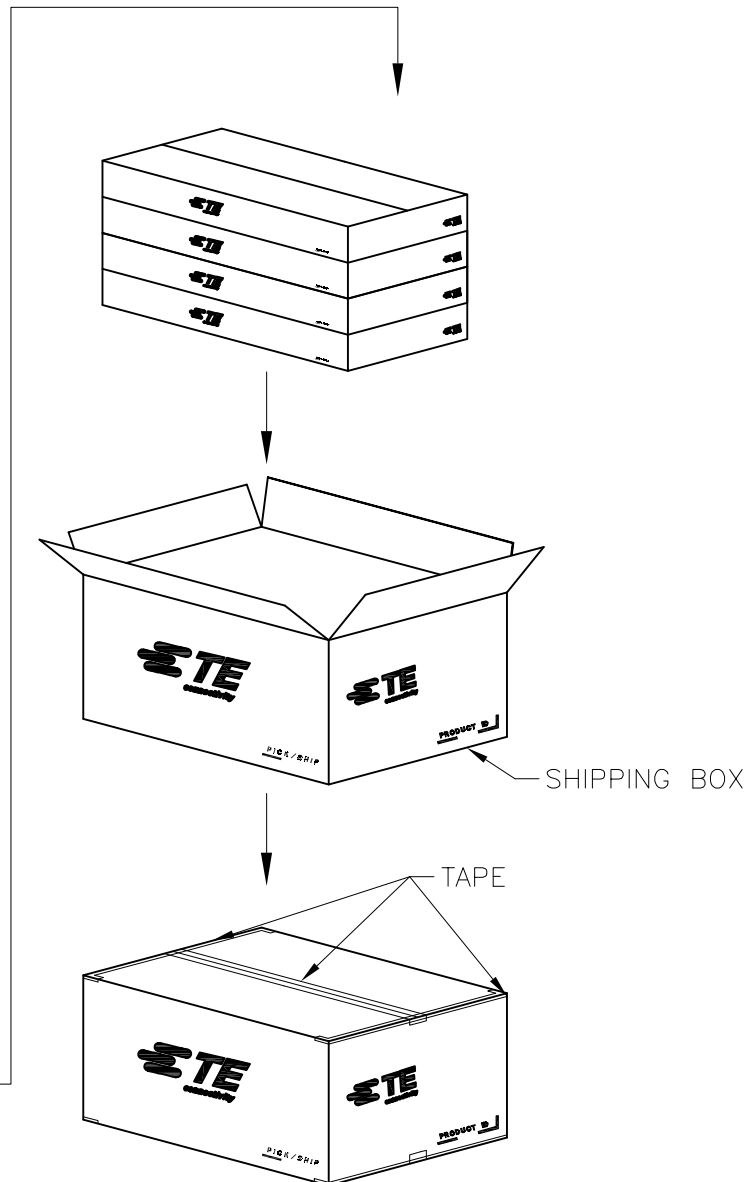
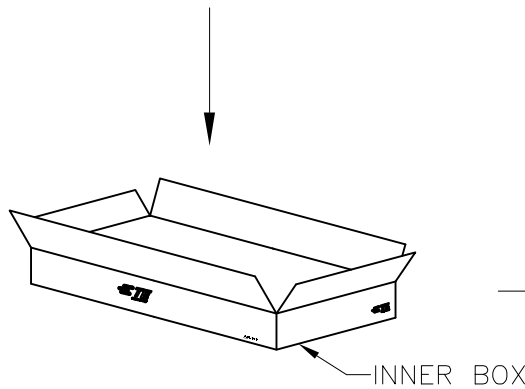
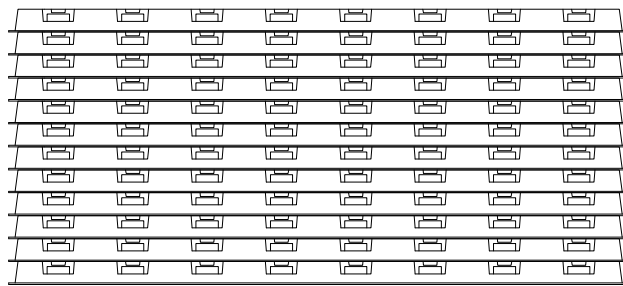


LOC	DIST	REVISIONS				
DW		P	LTR	DESCRIPTION	DATE	DWN
		-		SEE SHEET 1	-	-

DC POWER PLUG CONNECTOR  
TE P/N: 1-2129334-1  
OR 1-2129334-2



1. INNER BOX DIMENSION: 340mmX243mmX111mm
  2. SHIPPING BOX DIMENSION: 505mmX350mmX248mm
  3. EU ROHS-RELATED RESTRICTED SUBSTANCE SPEC IN HOMOGENEOUS MATERIAL REFER TO TEC-138-702 REV.G:  
LEAD < 1000PPM, CADMIUM < 100PPM, MERCURY < 1000PPM  
CHROMIUM VI < 1000PPM, PBB <1000PPM, PBDE < 1000PPM
  4. HALOGEN FREE SPEC:  
CHLORINE (Cl): 900 ppm MAX.  
BROMINE (Br): 900 ppm MAX.  
CHLORINE (Cl) + BROMINE (Br): 1500 ppm MAX.
- ⚠ PRODUCT SPEC:  
108-99035 FOR 7A CURRENT RATING.  
108-99040 FOR 10.7A CURRENT RATING.



64	768	4	3072
PCS/TRAY	PCS/INNER BOX	INNER BOX/SHIPPING BOX	TOTAL Q'TY

THIS DRAWING IS A CONTROLLED DOCUMENT.		DWN	TE Connectivity		
DIMENSIONS:		CHK			
mm	TOLERANCES UNLESS OTHERWISE SPECIFIED:	APVD	NAME		
	0 PLC ± -	PRODUCT SPEC	DC POWER PLUG CONNECTOR		
	1 PLC ± -	APPLICATION SPEC			
	2 PLC ± -	WEIGHT	SIZE	CAGE CODE	DRAWING NO
	3 PLC ± -	CUSTOMER DRAWING	A3	00779	C-2129334
	4 PLC ± -		SCALE	SHEET	REV
	ANGLES ± -		NA	2 OF 2	B4
MATERIAL	FINISH				