



Chipsmall Limited consists of a professional team with an average of over 10 year of expertise in the distribution of electronic components. Based in Hongkong, we have already established firm and mutual-benefit business relationships with customers from,Europe,America and south Asia,supplying obsolete and hard-to-find components to meet their specific needs.

With the principle of “Quality Parts,Customers Priority,Honest Operation,and Considerate Service”,our business mainly focus on the distribution of electronic components. Line cards we deal with include Microchip,ALPS,ROHM,Xilinx,Pulse,ON,Everlight and Freescale. Main products comprise IC,Modules,Potentiometer,IC Socket,Relay,Connector.Our parts cover such applications as commercial,industrial, and automotives areas.

We are looking forward to setting up business relationship with you and hope to provide you with the best service and solution. Let us make a better world for our industry!




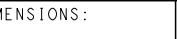


Contact us

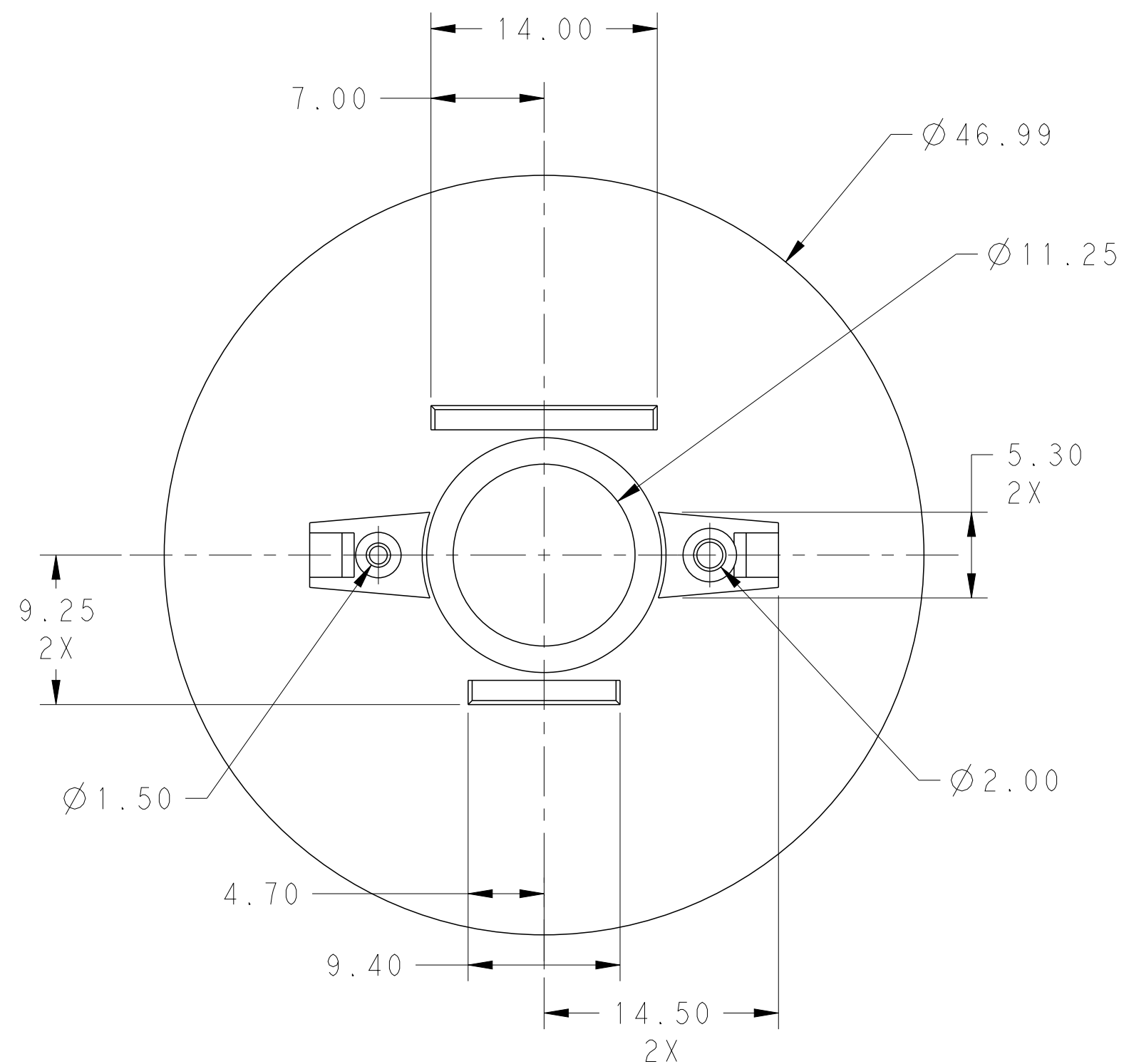
Tel: +86-755-8981 8866 Fax: +86-755-8427 6832

Email & Skype: info@chipsmall.com Web: www.chipsmall.com

Address: A1208, Overseas Decoration Building, #122 Zhenhua RD., Futian, Shenzhen, China



THIS DRAWING IS A CONTROLLED DOCUMENT.		DWN R BROWN	04MAY2011		 TE Connectivity	
		CHK R NARANG	04MAY2011			
DIMENSIONS:		TOLERANCES UNLESS OTHERWISE SPECIFIED:		APVD C. LEJUNSE	NAME	
mm				PRODUCT SPEC 108-2455	LUMAWISE LED HOLDER, TYPE LS OPTIC	
				APPLICATION SPEC 114-13294		
MATERIAL		FINISH		WEIGHT -	SIZE A2	CAGE CODE 00779
				DRAWING NO C-2154430		RESTRICTED TO -
Customer Drawing				SCALE 3:1	SHEET 1	OF 2
				REV A1		



① MATERIAL: PC

② COATING: ALUMINUM COATING WITH CLEAR LACQUER

3. MUST COMPLY WITH DIRECTIVE 2002/95/EC (ROHS)

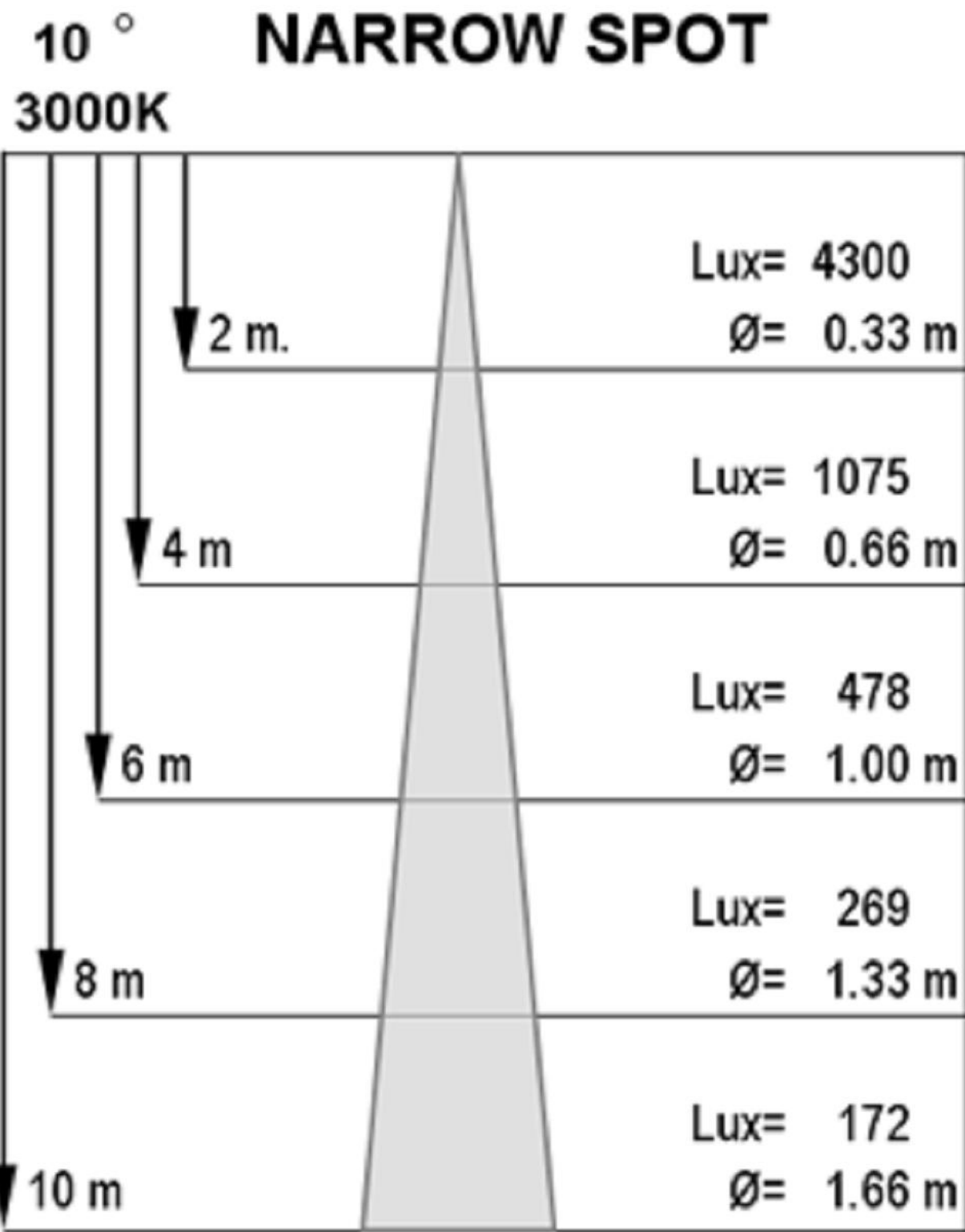
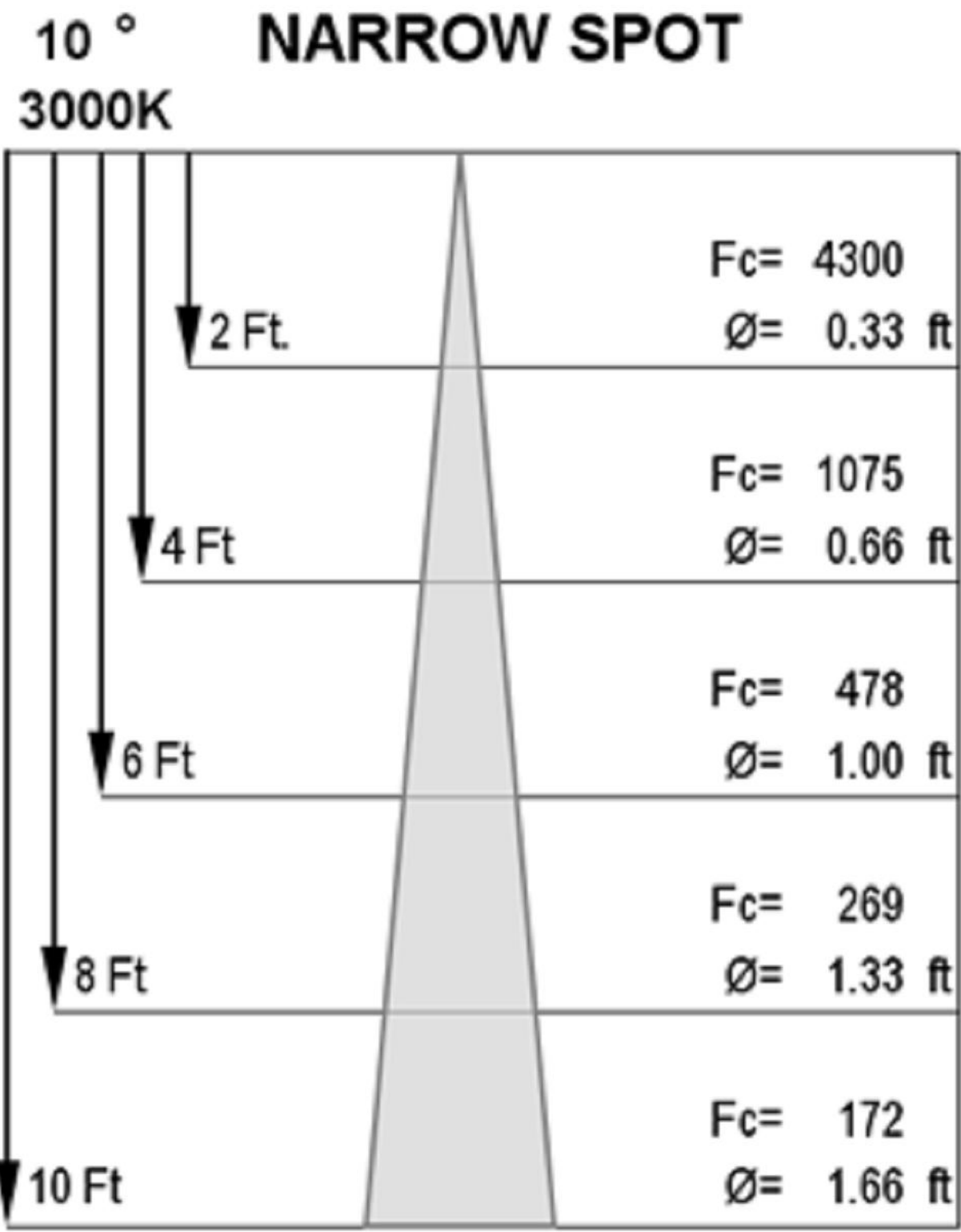
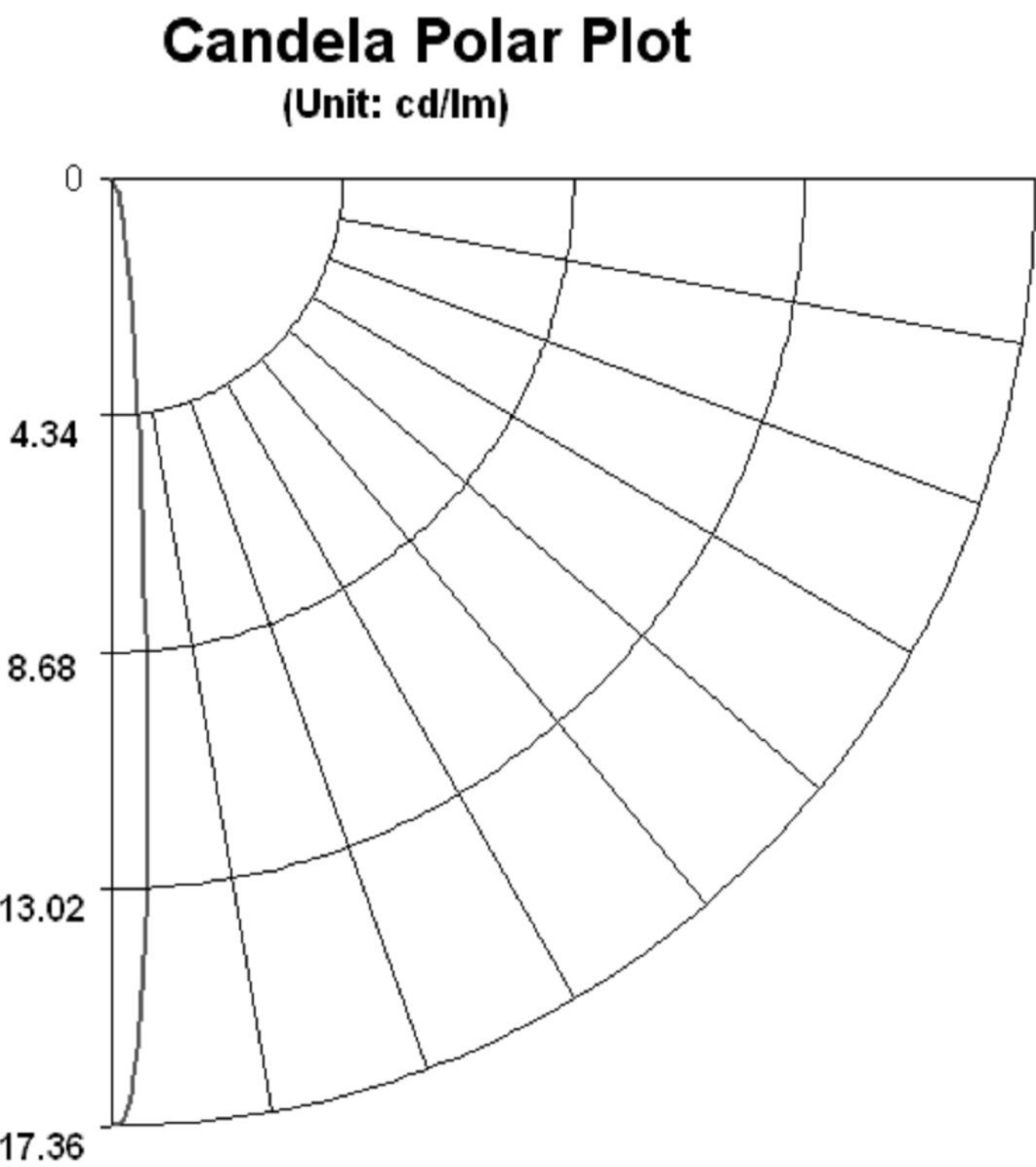
4. FOR USE WITH P/N 2154235-2


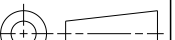
5. PERFORMANCE:
EFFICIENCY: 85% TYPICAL
OPERATING TEMPERATURE: -40 TO 105°C
SEE SHEET 2 FOR ADDITIONAL INFORMATION

⑥ ILLUMINACE VALUE BASED ON 17200 cd @ 991 lm OUTPUT

LOC	DIST	REVISIONS					
		P	LTR	DESCRIPTION	DATE	DWN	APVD
-	-		-	SEE SHEET 1	-	-	-

PHOTOMETRIC INFORMATION:



THIS DRAWING IS A CONTROLLED DOCUMENT.		DWN R BROWN 04MAY2011		 TE Connectivity			
		CHK R NARANG 04MAY2011					
DIMENSIONS: mm		TOLERANCES UNLESS OTHERWISE SPECIFIED:		APVD O. LEIJNSE 22JAN2014		NAME	
		0 PLC ±-		PRODUCT SPEC		LUMAWISE LED HOLDER, TYPE LS OPTIC -	
		1 PLC ±0.2		108-2455			
		2 PLC ±0.13		APPLICATION SPEC			
		3 PLC ±-		114-13294		SIZE	
		4 PLC ±-				CAGE CODE	
MATERIAL		ANGLES ±2°		WEIGHT		DRAWING NO	
		FINISH		-		RESTRICTED TO	
						A200779	
				Customer Drawing		C-2154430	
						SCALE 3:1	
						SHEET 2 OF 2	
						REV A1	