



Chipsmall Limited consists of a professional team with an average of over 10 year of expertise in the distribution of electronic components. Based in Hongkong, we have already established firm and mutual-benefit business relationships with customers from,Europe,America and south Asia,supplying obsolete and hard-to-find components to meet their specific needs.

With the principle of “Quality Parts,Customers Priority,Honest Operation,and Considerate Service”,our business mainly focus on the distribution of electronic components. Line cards we deal with include Microchip,ALPS,ROHM,Xilinx,Pulse,ON,Everlight and Freescale. Main products comprise IC,Modules,Potentiometer,IC Socket,Relay,Connector.Our parts cover such applications as commercial,industrial, and automotives areas.

We are looking forward to setting up business relationship with you and hope to provide you with the best service and solution. Let us make a better world for our industry!



Contact us

Tel: +86-755-8981 8866 Fax: +86-755-8427 6832

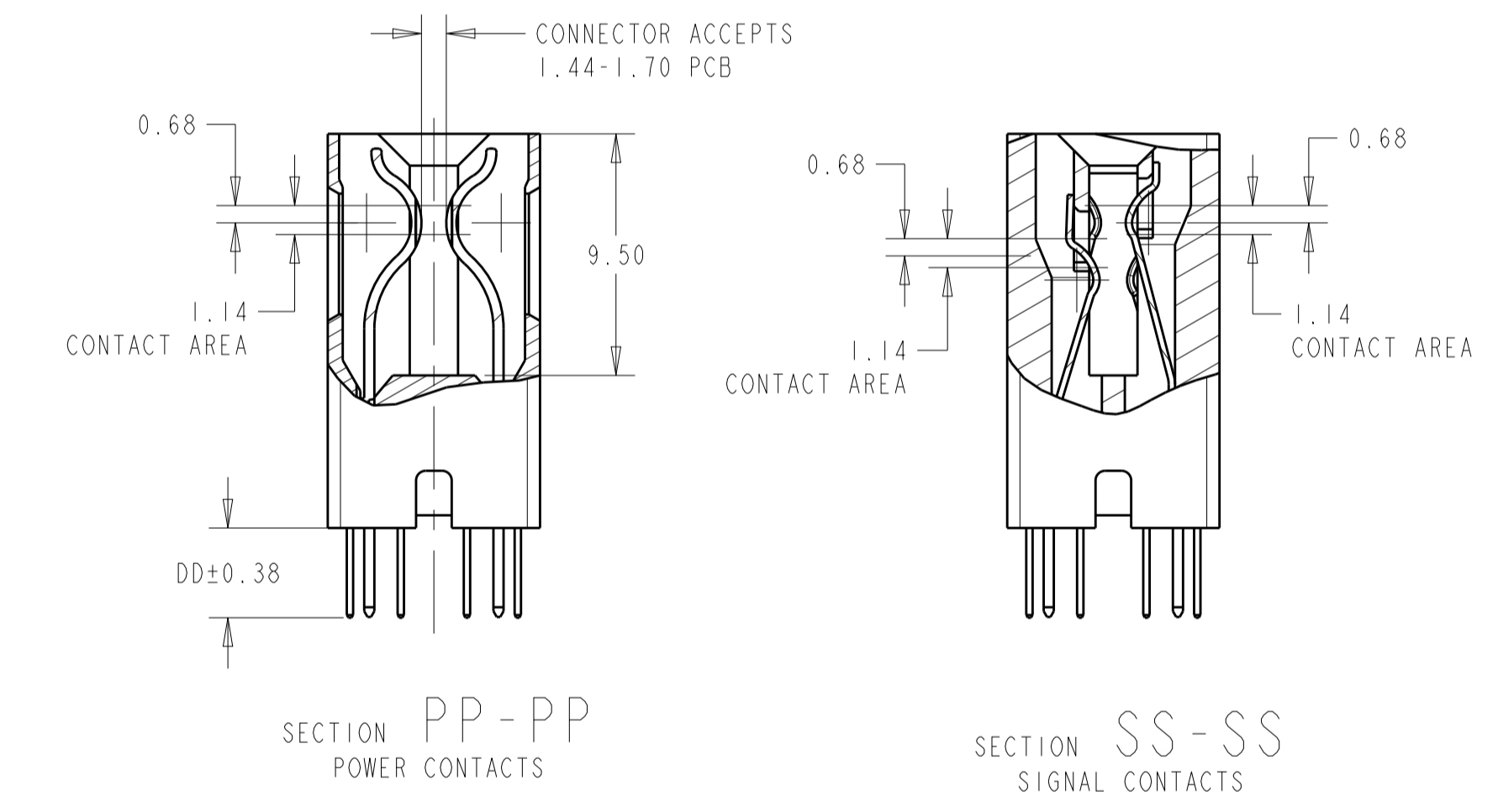
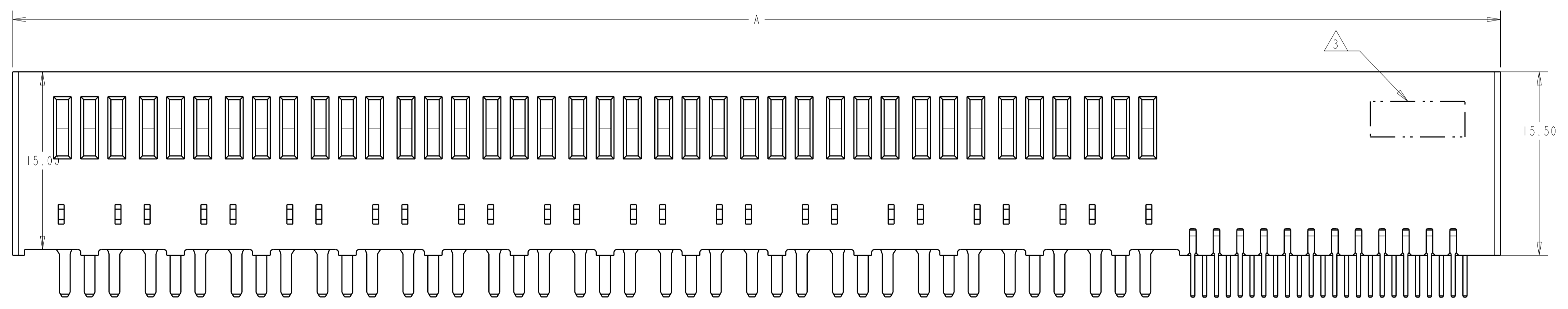
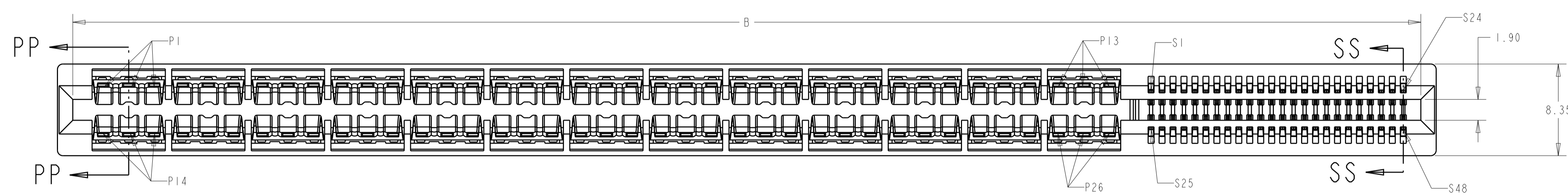
Email & Skype: info@chipsmall.com Web: www.chipsmall.com

Address: A1208, Overseas Decoration Building, #122 Zhenhua RD., Futian, Shenzhen, China

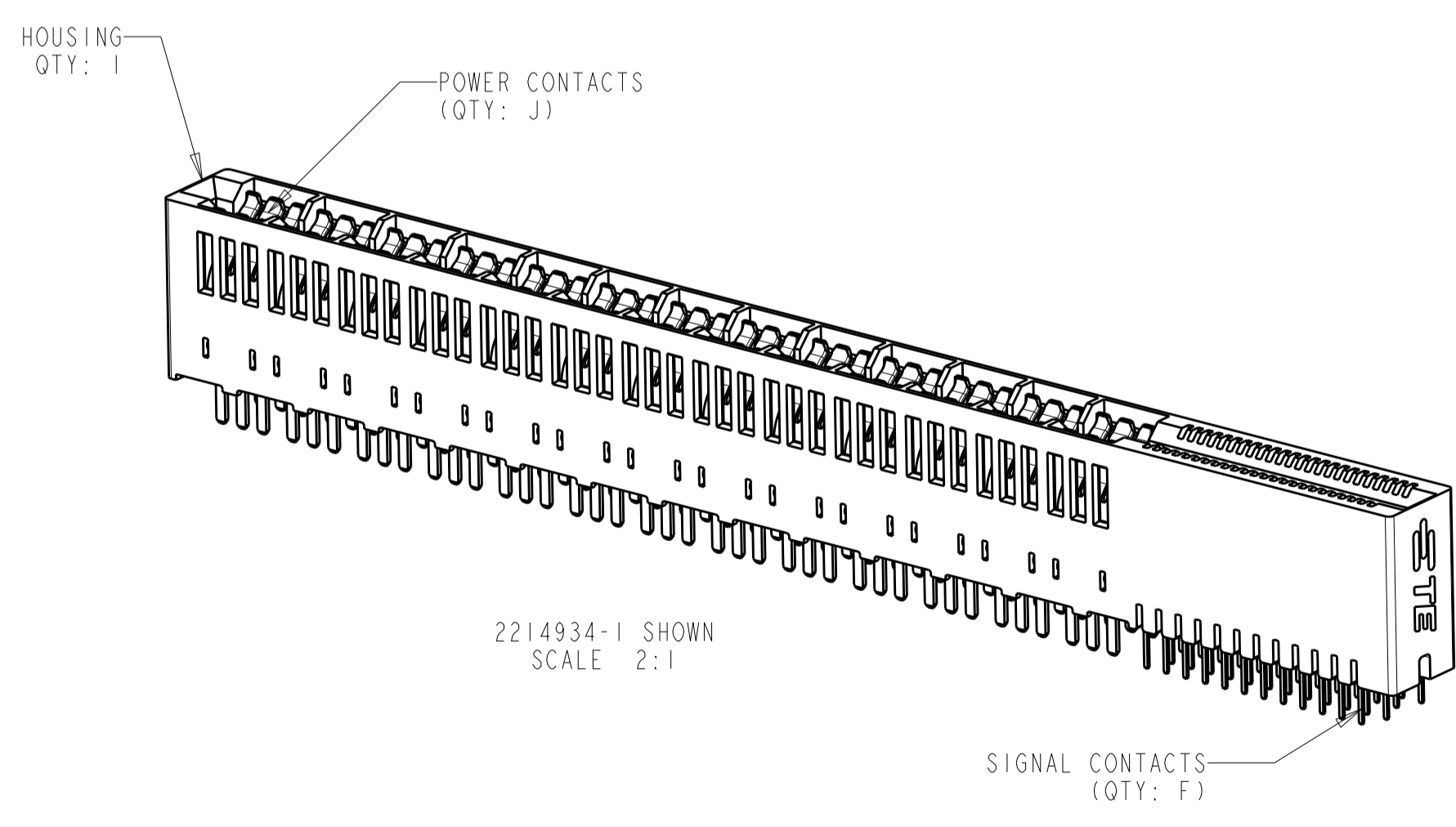


LOC	DIST	REVISIONS					
		P	LTN	DESCRIPTION	DATE	DWN	APVD
AA	00	A		FIRST RELEASE	10AUG2016	SZ	SZ

- MATERIAL: HOUSING - THERMOPLASTIC, GLASS REINFORCED, COLOR: BLACK
CONTACT - COPPER ALLOY
- FINISH: CONTACT - GOLD PLATED OVER NICKEL
SOLDER TAILS - MATTE TIN OVER NICKEL
- CONNECTOR ASSEMBLY MARKED WITH PART NUMBER AND DATE CODE IN THE APPROXIMATE AREA SHOWN
- DATUMS AND BASIC DIMENSIONS TO BE ESTABLISHED BY CUSTOMER
- MANUFACTURING TOLERANCE FOR 1.07mm DIAMETER FINISHED HOLE:
DRILLED HOLE = 1.15+/-0.03mm
COPPER PLATE = 0.050/0.025mm (MAX HARDNESS 150 KNOOP)
TIN/LEAD PLATE (HASL) = 0.010/0.004mm
- MANUFACTURING TOLERANCE FOR 0.70mm DIAMETER FINISHED HOLE:
DRILLED HOLE = 0.78+/-0.03mm
COPPER PLATE = 0.050/0.025mm (MAX HARDNESS 150 KNOOP)
TIN/LEAD PLATE (HASL) = 0.010/0.004mm



2214934-1 SHOWN



2.92	3.50	7.44	24.76	6	10.93	4.41	4	18.37	8	12	10	12	2	25.07	27.87	2 X 2 POWER 2 X 6 SIGNAL	1-2214934-4
2.92	3.50	1.81	13.50	2	5.30	2.78	2	7.11	4	4	2	6	0	13.81	16.61	2 X 1 POWER 2 X 2 SIGNAL	1-2214934-3
2.92	3.50	12.44	34.76	16	15.93	-0.59	4	28.37	8	32	30	12	2	35.07	37.87	2 X 2 POWER 2 X 16 SIGNAL	1-2214934-2
2.92	3.50	23.70	57.28	24	31.22	6.70	8	50.89	16	48	46	24	6	57.59	60.39	2 X 4 POWER 2 X 24 SIGNAL	1-2214934-1
2.92	3.50	10.44	30.76	12	13.93	1.41	4	24.37	8	24	22	12	2	31.07	33.87	2 X 2 POWER 2 X 12 SIGNAL	2214934-9
4.45	5.00	24.96	59.80	12	28.45	15.93	12	53.41	24	24	22	36	10	60.11	62.91	2 X 6 POWER 2 X 12 SIGNAL	2214934-8
2.92	3.50	24.96	59.80	12	28.45	15.93	12	53.41	24	24	22	36	10	60.11	62.91	2 X 6 POWER 2 X 12 SIGNAL	2214934-7
4.45	5.00	15.70	41.28	8	19.19	10.67	8	34.89	16	16	14	24	6	41.59	44.39	2 X 4 POWER 2 X 8 SIGNAL	2214934-6
2.92	3.50	15.70	41.28	8	19.19	10.67	8	34.89	16	16	14	24	6	41.59	44.39	2 X 4 POWER 2 X 8 SIGNAL	2214934-5
4.45	5.00	6.44	22.76	4	9.93	5.41	4	16.37	8	8	6	12	2	23.07	25.87	2 X 2 POWER 2 X 4 SIGNAL	2214934-4
2.92	3.50	6.44	22.76	4	9.93	5.41	4	16.37	8	8	6	12	2	23.07	25.87	2 X 2 POWER 2 X 4 SIGNAL	2214934-3
4.45	5.00	56.37	122.62	24	59.86	35.34	26	116.23	52	48	46	78	24	122.93	125.73	2 X 13 POWER X 2 X 24 SIGNAL	2214934-2
2.92	3.50	56.37	122.62	24	59.86	35.34	26	116.23	52	48	46	78	24	122.93	125.73	2 X 13 POWER X 2 X 24 SIGNAL	2214934-1

THIS DRAWING IS A CONTROLLED DOCUMENT.

DIMENSIONS: mm

TOLERANCES UNLESS OTHERWISE SPECIFIED:

0 PLC	±
1 PLC	±0.5
2 PLC	±0.25
3 PLC	±
4 PLC	±
ANGLES	±0.4°

MATERIAL: SEE NOTE 1

FINISH: SEE NOTE 2

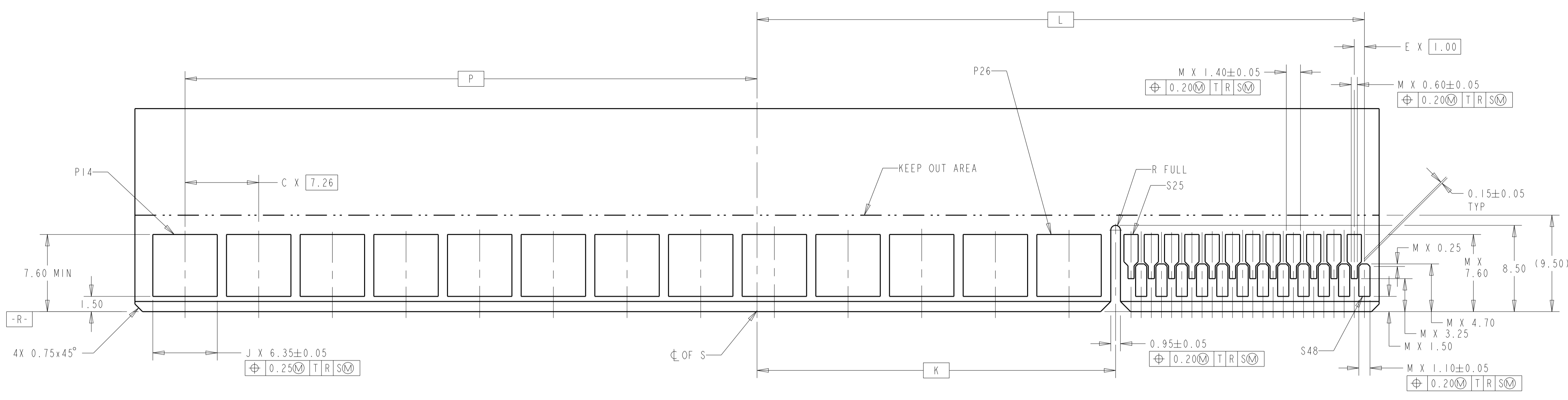
THIS DRAWING IS A CONTROLLED DOCUMENT. DWN: L.A. WENSEL 18APR2012, CHK: D. DEFIBAUGH 18APR2012, APVD: S. FLICKINGER 18APR2012

NAME: CONNECTOR ASSEMBLY, MULTI-BEAM CE, POWER/SIGNAL, VERTICAL, SOLDER MOUNT

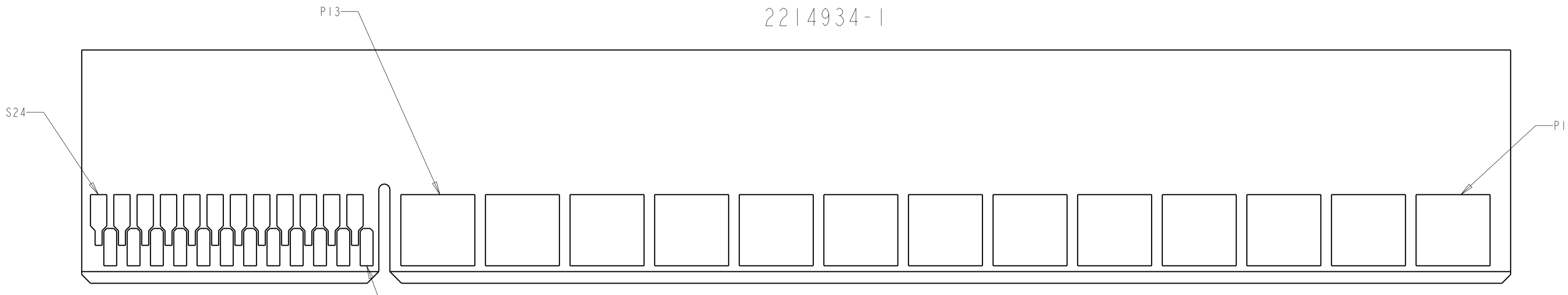
SIZE: A1, CAGE CODE: 00779, DRAWING NO: 2214934, SHEET 1 OF 2, REV A

SCALE: 4:1

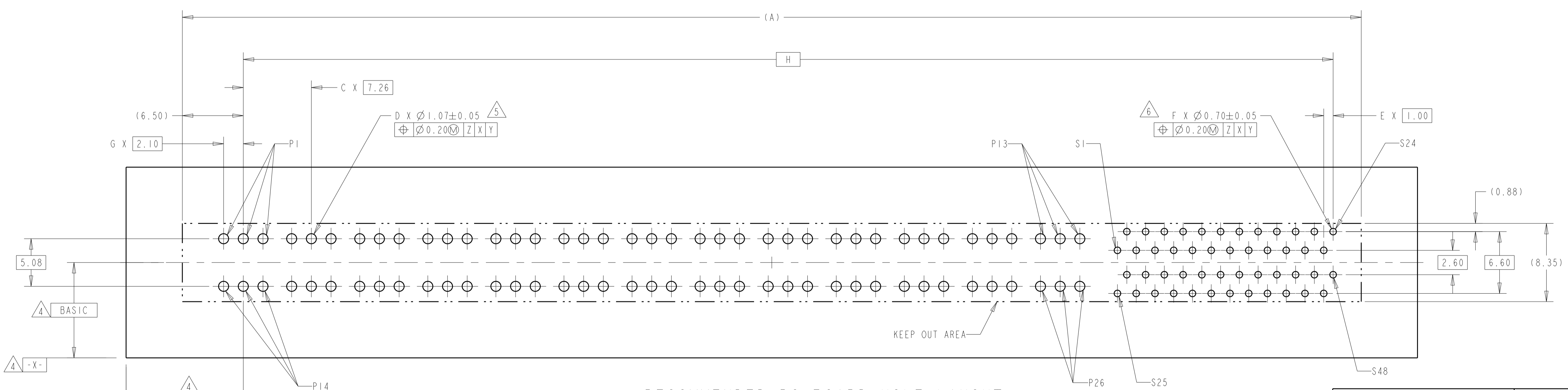
LOC	DIST	REVISIONS			
P	LTN	DESCRIPTION	DATE	DMN	APVD
-	-	SEE SHEET 1	-	-	-



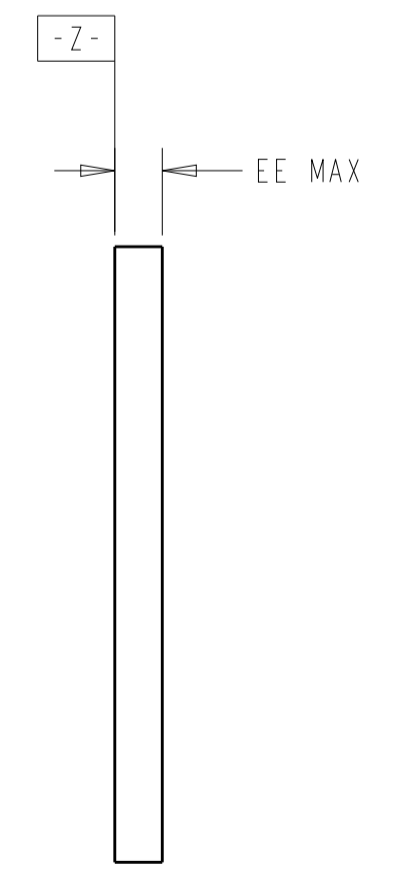
RECOMMENDED MATING BOARD EDGE CONFIGURATION
(PRIMARY SIDE SHOWN)
DAUGHTER CARD
2214934-1



RECOMMENDED MATING BOARD EDGE CONFIGURATION
(SECONDARY SIDE SHOWN)



RECOMMENDED PC BOARD HOLE LAYOUT
COMPONENT SIDE
2214934-1 LAYOUT



THIS DRAWING IS A CONTROLLED DOCUMENT.		DMN L.A.WENSEL 18APR2012	TE Connectivity
DIMENSIONS: mm		CHK D.DEFIBAUGH 18APR2012	
TOLERANCES UNLESS OTHERWISE SPECIFIED:		APVD S.FLICKINGER 18APR2012	NAME CONNECTOR ASSEMBLY, MULTI-BEAM CE, POWER/SIGNAL, VERTICAL, SOLDER MOUNT
0 PLC ±0.3 1 PLC ±0.13 3 PLC ±0.13 4 PLC ±0.13 ANGLES ±0.4°		PRODUCT SPEC	
MATERIAL SEE NOTE 1		FINISH SEE NOTE 2	APPLICATION SPEC
CUSTOMER DRAWING		SCALE 4:1	RESTRICTED TO
SIZE A1		CAGE CODE 00779	DRAWING NO. 2214934
SHEET 2 OF 2		REV A	