



Chipsmall Limited consists of a professional team with an average of over 10 year of expertise in the distribution of electronic components. Based in Hongkong, we have already established firm and mutual-benefit business relationships with customers from,Europe,America and south Asia,supplying obsolete and hard-to-find components to meet their specific needs.

With the principle of “Quality Parts,Customers Priority,Honest Operation,and Considerate Service”,our business mainly focus on the distribution of electronic components. Line cards we deal with include Microchip,ALPS,ROHM,Xilinx,Pulse,ON,Everlight and Freescale. Main products comprise IC,Modules,Potentiometer,IC Socket,Relay,Connector.Our parts cover such applications as commercial,industrial, and automotives areas.

We are looking forward to setting up business relationship with you and hope to provide you with the best service and solution. Let us make a better world for our industry!



Contact us

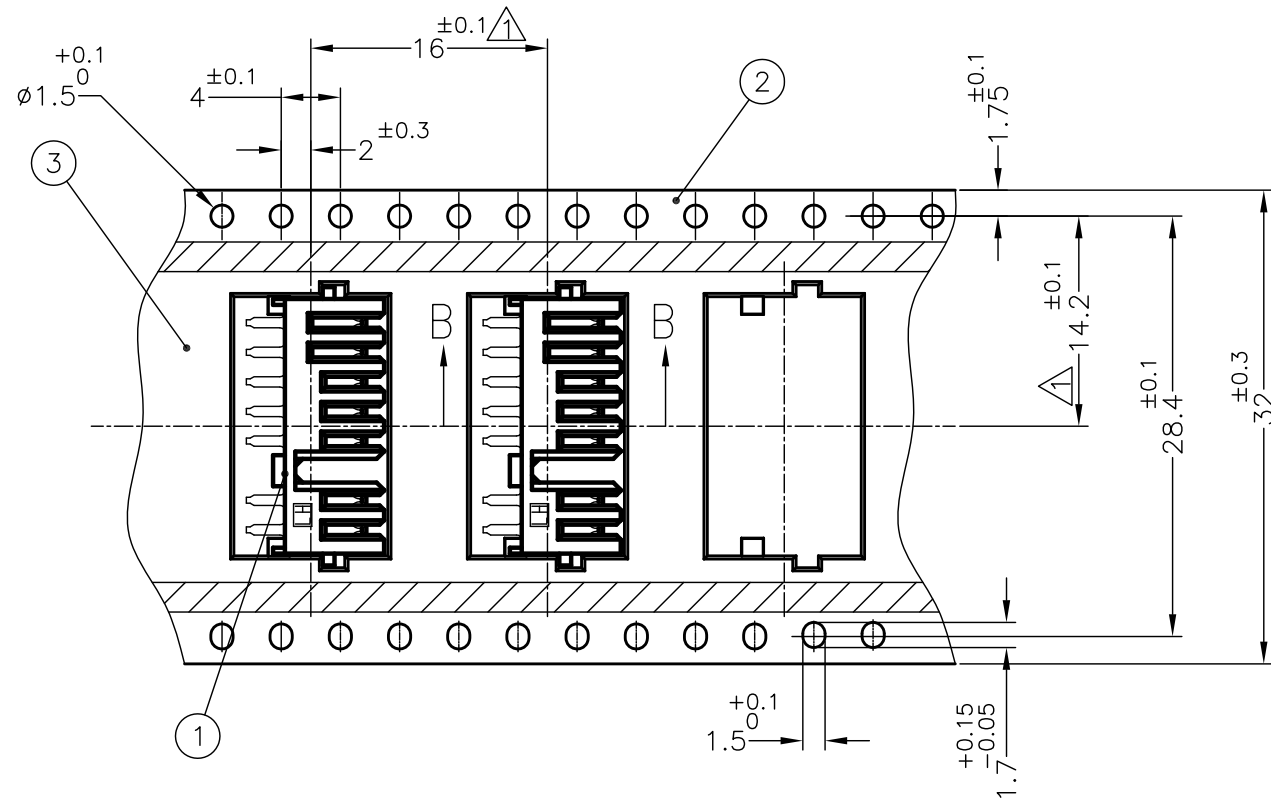
Tel: +86-755-8981 8866 Fax: +86-755-8427 6832

Email & Skype: info@chipsmall.com Web: www.chipsmall.com

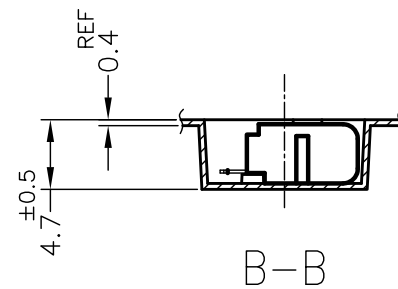
Address: A1208, Overseas Decoration Building, #122 Zhenhua RD., Futian, Shenzhen, China



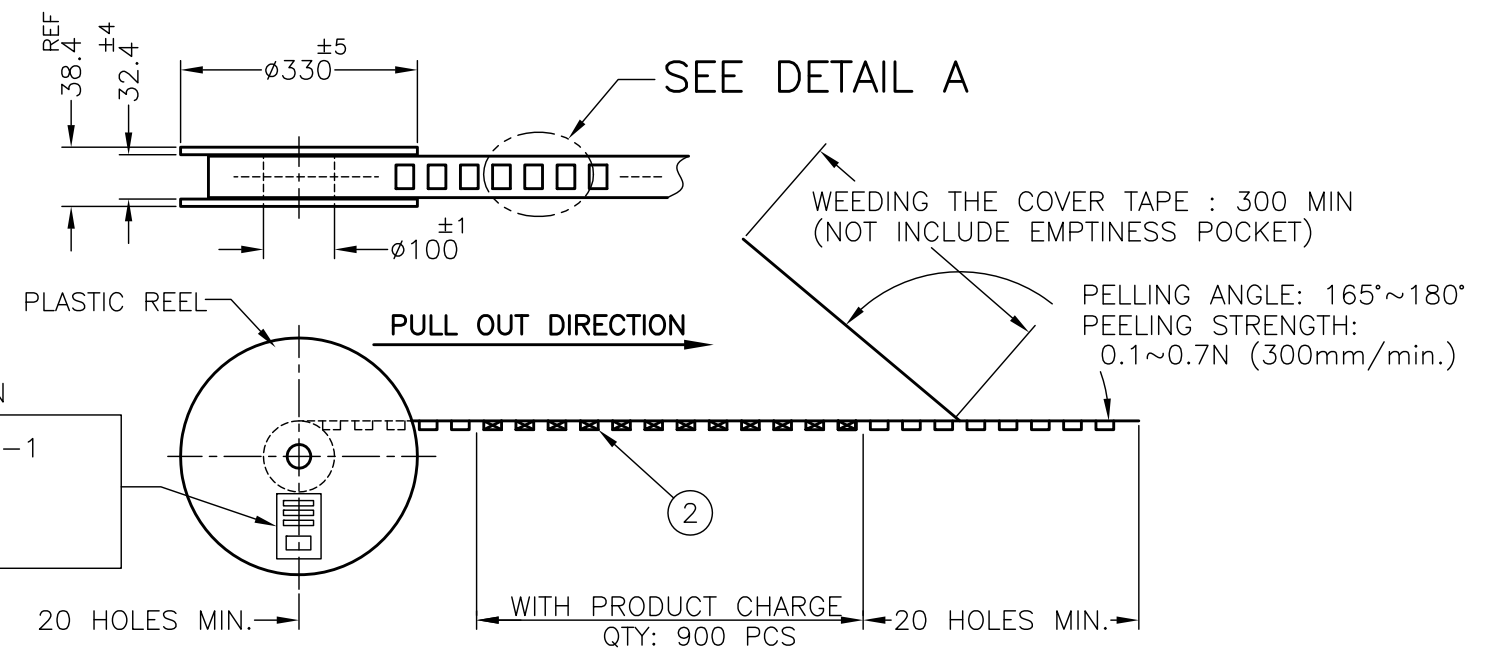
2229293-1; AS SHOWN



DETAIL A
SCALE 2:1




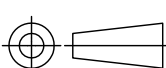
△ THIS DIMENSION MEANS CENTER OF THE POCKET.



LABEL	DESCRIPTION
1	1.0000
2	2.0000
3	3.0000
4	4.0000
5	5.0000
6	6.0000
7	7.0000
8	8.0000
9	9.0000
10	10.0000
11	11.0000
12	12.0000
13	13.0000
14	14.0000
15	15.0000
16	16.0000
17	17.0000
18	18.0000
19	19.0000
20	20.0000
21	21.0000
22	22.0000
23	23.0000
24	24.0000
25	25.0000
26	26.0000
27	27.0000
28	28.0000
29	29.0000
30	30.0000
31	31.0000
32	32.0000
33	33.0000
34	34.0000
35	35.0000
36	36.0000
37	37.0000
38	38.0000
39	39.0000
40	40.0000
41	41.0000
42	42.0000
43	43.0000
44	44.0000
45	45.0000
46	46.0000
47	47.0000
48	48.0000
49	49.0000
50	50.0000
51	51.0000
52	52.0000
53	53.0000
54	54.0000
55	55.0000
56	56.0000
57	57.0000
58	58.0000
59	59.0000
60	60.0000
61	61.0000
62	62.0000
63	63.0000
64	64.0000
65	65.0000
66	66.0000
67	67.0000
68	68.0000
69	69.0000
70	70.0000
71	71.0000
72	72.0000
73	73.0000
74	74.0000
75	75.0000
76	76.0000
77	77.0000
78	78.0000
79	79.0000
80	80.0000
81	81.0000
82	82.0000
83	83.0000
84	84.0000
85	85.0000
86	86.0000
87	87.0000
88	88.0000
89	89.0000
90	90.0000
91	91.0000
92	92.0000
93	93.0000
94	94.0000
95	95.0000
96	96.0000
97	97.0000
98	98.0000
99	99.0000
100	100.0000

TE P/N: 2229293-1
QTY: 900 pcs
D/C:
MADE IN CHINA

PART NUMBER		
2229293-1		
1	COVER TAPE	③
1	EMBOSS CARRIER TAPE	②
900	2229294-1	①
QTY REQD PER ASSY	COMPONENT NAME	NO.

THIS DRAWING IS A CONTROLLED DOCUMENT.		DWN K.YAMAGUCHI 27SEP2012 CHK Y.YAMAMOTO 27SEP2012 APVD Y.YAMAMOTO 27SEP2012		<div>TE Connectivity</div>				
DIMENSIONS: mm		TOLERANCES UNLESS OTHERWISE SPECIFIED: 0 PLC ± 0.3 1 PLC ± 0.3 2 PLC ± 0.3 3 PLC ± 0.3 4 PLC ± 0.3 ANGLES ± 3°		NAME 2mm PITCH BATTERY REC. ASSEMBLY 7POS. H=4.0 PACKING				
		PRODUCT SPEC 108-78292		APPLICATION SPEC				
MATERIAL		FINISH		SIZE A3		CAGE CODE 00779	DRAWING NO C-2229293	RESTRICTED TO —
CUSTOMER DRAWING				SCALE 2:1		SHEET 1 OF 3		REV B

4

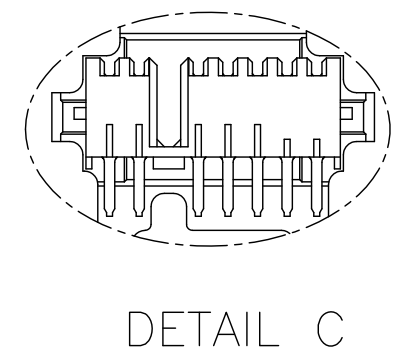
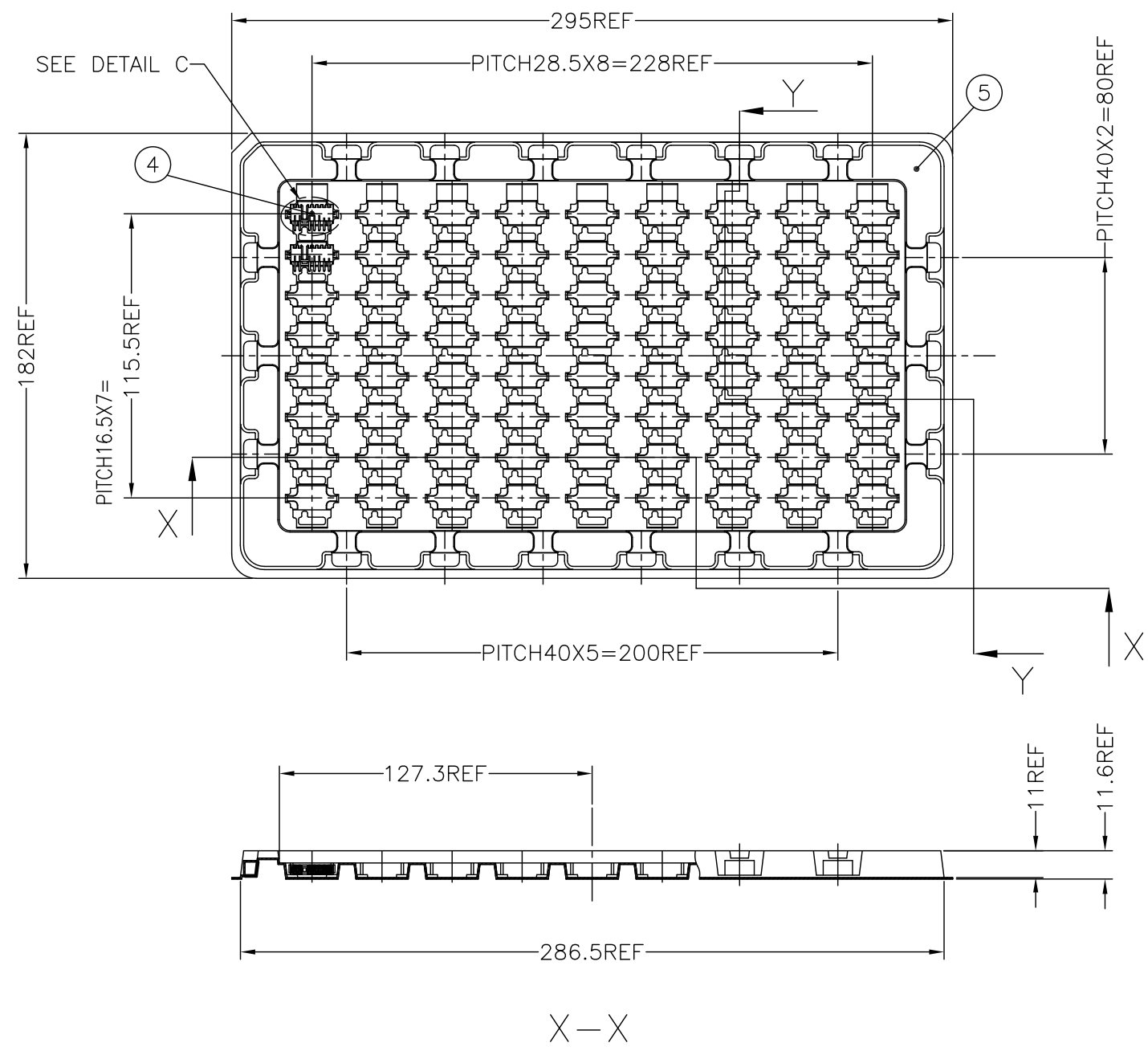
3

2

1

LOC	DIST	REVISIONS				
		P	LTR	DESCRIPTION	DATE	APVD
DW			-	SEE SHEET 1	-	-

1-2229293-1; AS SHOWN



PART NUMBER		
1-2229293-1		
1	TRAY	⑤
72	1-2229294-1	④
QTY REQD PER ASSY	COMPONENT NAME	NO.

THIS DRAWING IS A CONTROLLED DOCUMENT.

DIMENSIONS:
mm

MATERIAL

TOLERANCES UNLESS OTHERWISE SPECIFIED:

0 PLC ± 0.3
1 PLC ± 0.3
2 PLC ± 0.3
3 PLC ± 0.3
4 PLC ± 0.3
ANGLES ± 3°
FINISH

DWN

CHK

APVD

PRODUCT SPEC

APPLICATION SPEC

WEIGHT

CUSTOMER DRAWING

TE Connectivity

NAME

2mm PITCH BATTERY REC. ASSEMBLY 7POS. H=4.0
PACKING

SIZE

A3

CAGE CODE

00779

DRAWING NO

2229293

RESTRICTED TO

SCALE

2:1

SHEET

2 OF 3

REV

B

4

3

2

1

THIS DRAWING IS UNPUBLISHED.

RELEASED FOR PUBLICATION

SEP ,2012.

© COPYRIGHT 2012 By Tyco Electronics Japan G.K.

ALL RIGHTS RESERVED.

LOC

DIST

REVISIONS

P

LTR

DESCRIPTION

DATE

DWN

APVD

—

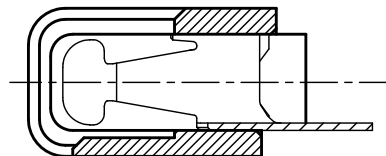
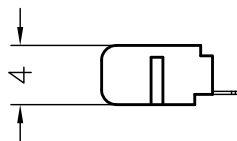
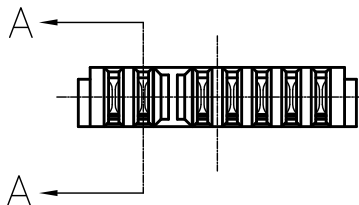
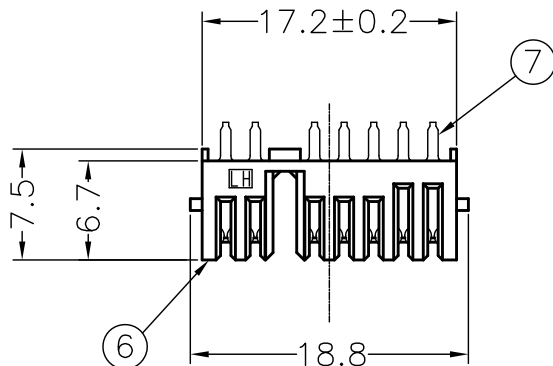
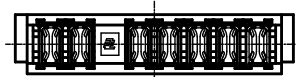
SEE SHEET 1

—

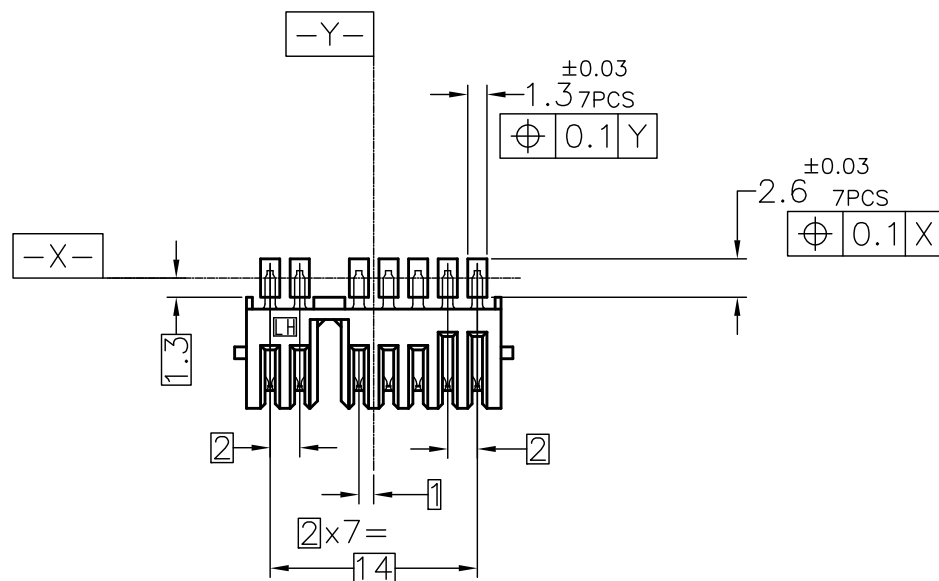
—

—

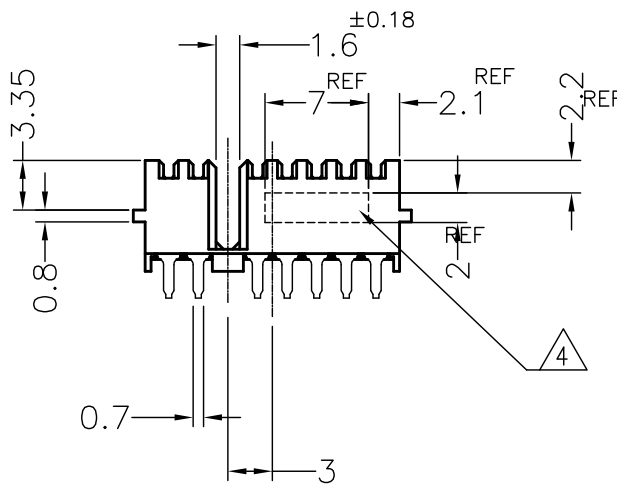
CONNECTOR W/O PACKING CONDITION



A-A
(SCALE 5:1)



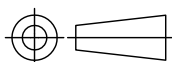
REFERENCE P.C.BOARD LAYOUT
P.C.BOARD THICKNESS : 0.8~1.2
(VIEW FROM CONNECTOR MOUNTING SIDE)



PART NUMBER			
1-2229294-1	2229294-1		
7	7	CONTACT	⑦
1	1	HOUSING	⑥
QTY REQD PER ASSY		COMPONENT NAME	NO.

THIS DRAWING IS A CONTROLLED DOCUMENT.

DIMENSIONS:
mm



MATERIAL



TOLERANCES UNLESS
OTHERWISE SPECIFIED:

0 PLC ± 0.3
1 PLC ± 0.3
2 PLC ± 0.3
3 PLC ± 0.3
4 PLC ± 0.3
ANGLES ± 3°

FINISH



DWN

CHK

APVD

PRODUCT SPEC

APPLICATION SPEC

WEIGHT

0.7g

CUSTOMER DRAWING



TE Connectivity

NAME

2mm PITCH BATTERY REC. ASSEMBLY 7POS. H=4.0
PACKING

SIZE

CAGE CODE

DRAWING NO

RESTRICTED TO

A3

00779

2229293

SCALE

2:1

SHEET

3 OF 3

REV

B