



Chipsmall Limited consists of a professional team with an average of over 10 year of expertise in the distribution of electronic components. Based in Hongkong, we have already established firm and mutual-benefit business relationships with customers from,Europe,America and south Asia,supplying obsolete and hard-to-find components to meet their specific needs.

With the principle of “Quality Parts,Customers Priority,Honest Operation,and Considerate Service”,our business mainly focus on the distribution of electronic components. Line cards we deal with include Microchip,ALPS,ROHM,Xilinx,Pulse,ON,Everlight and Freescale. Main products comprise IC,Modules,Potentiometer,IC Socket,Relay,Connector.Our parts cover such applications as commercial,industrial, and automotives areas.

We are looking forward to setting up business relationship with you and hope to provide you with the best service and solution. Let us make a better world for our industry!



## Contact us

Tel: +86-755-8981 8866 Fax: +86-755-8427 6832

Email & Skype: [info@chipsmall.com](mailto:info@chipsmall.com) Web: [www.chipsmall.com](http://www.chipsmall.com)

Address: A1208, Overseas Decoration Building, #122 Zhenhua RD., Futian, Shenzhen, China



THIS DRAWING IS UNPUBLISHED.		RELEASED FOR PUBLICATION		20	
© COPYRIGHT 20		BY -		ALL RIGHTS RESERVED.	
ABSOLUTE MAXIMUM RATINGS		SYMBOL	MIN	MAX	UNIT
STORAGE TEMPERATURE		Tstg	-40	85	°C
POWER SUPPLY INPUT VOLTAGE		Vdd	3.1	3.5	VDC
TOTAL SYSTEM CURRENT DRAW		Id	x	33	mA

ELECTRICAL CHARACTERISTICS	MIN	MAX	UNIT
ANALOG AUDIO OUTPUT SENSITIVITY	-25	-19	dBV
ANALOG AUDIO OUTPUT FREQ RANGE	100	10k	Hz

ENVIRONMENTAL CHARACTERISTICS	MIN	MAX	UNIT
OPERATING TEMPERATURE	-5	50	°C
RELATIVE HUMIDITY OPERATING, NON-CONDENSING ENVIRONMENT	5	95	%

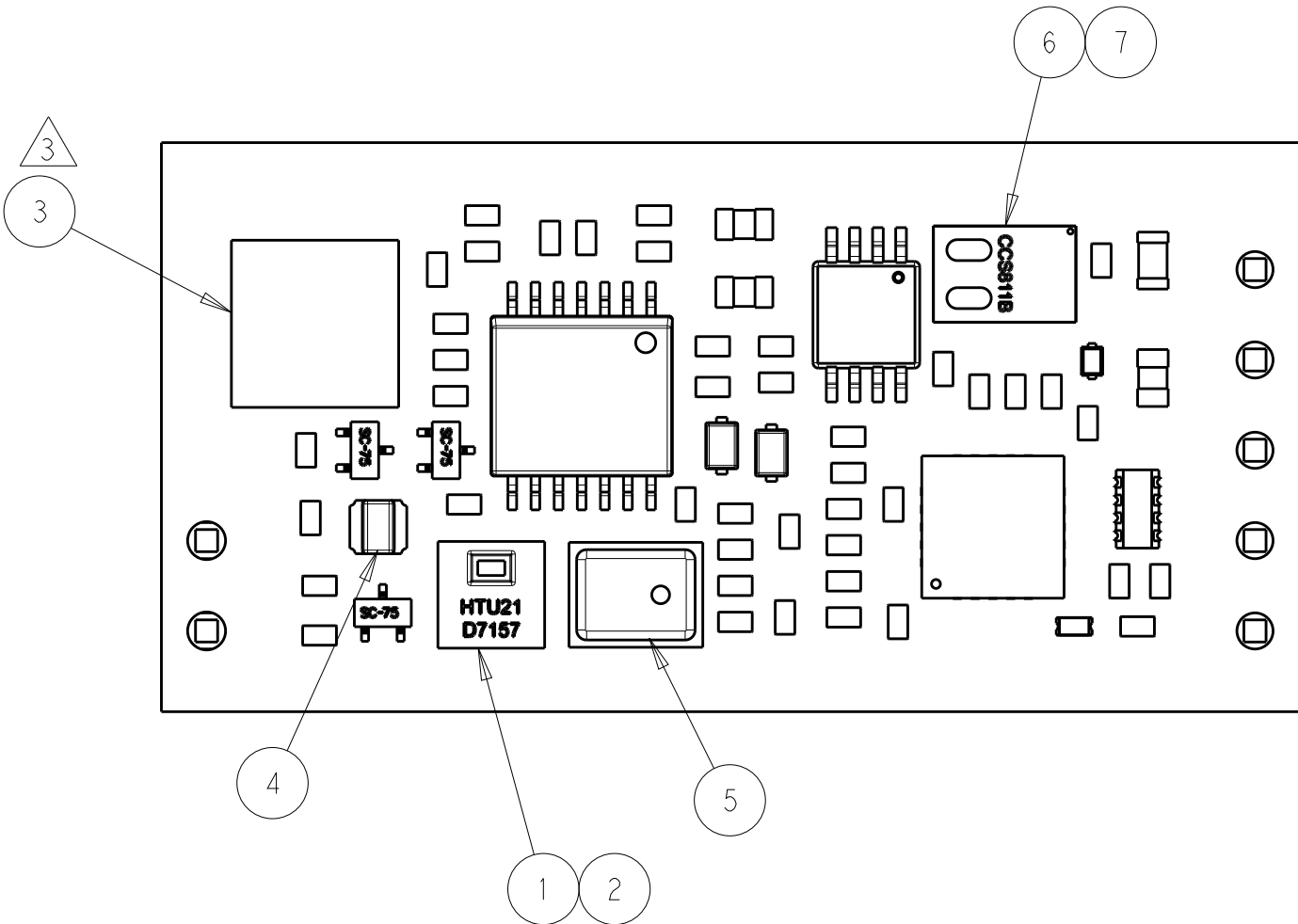
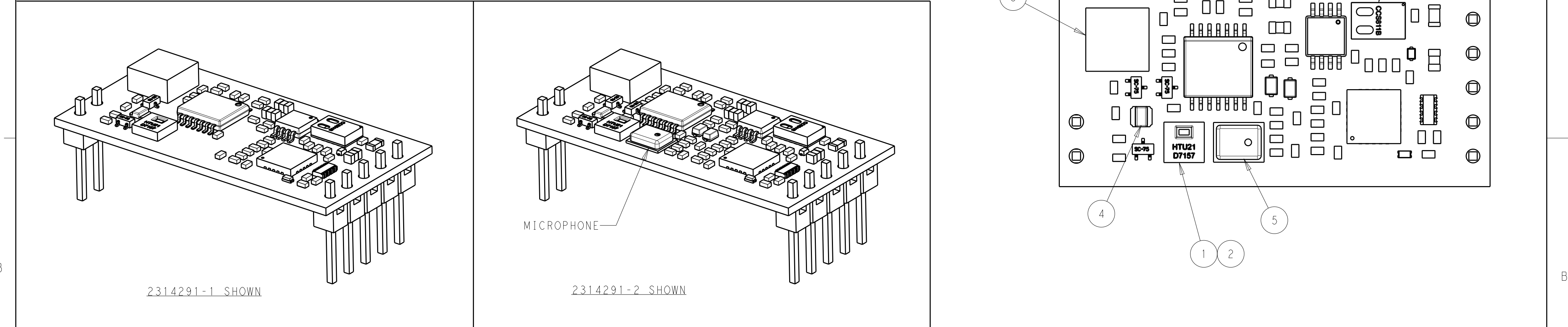
ITEM: SENSOR	SENSOR PERFORMANCE
1: TEMPERATURE	-5°C TO +50°C ±0.3°C ACCURACY, 1 SECOND ACQUISITION RATE
2: RELATIVE HUMIDITY	5% TO 95% RH, 2% ACCURACY, 1 SECOND ACQUISITION RATE
3: MOTION	INTERRUPT DRIVEN, RESPONSE <0.5 SECS.
4: AMBIENT LIGHT LEVELS	1 SECOND ACQUISITION RATE
5: MICROPHONE	INTERRUPT DRIVEN, RESPONSE <0.5 SECS.
6: EQUIVALENT CO2	400-8192 ppm, 60 SECOND ACQUISITION RATE
7: VOC	0-1187 ppb, 60 SECOND ACQUISITION RATE

REVISIONS					
P	LTR	DESCRIPTION	DATE	DWN	APVD
	A2	2314291-2; 1-2314291-2 RELEASED	31JUL2018	SM	-

- NOTES:
1. THIS PRODUCT HAS NOT COMPLETED VALIDATION TESTING,
2. MUST COMPLY WITH DIRECTIVE 2002/95/EC (ROHS).
3. SEPARATE LENS AVAILABLE UNDER TE P/N: 2317697-1.

C

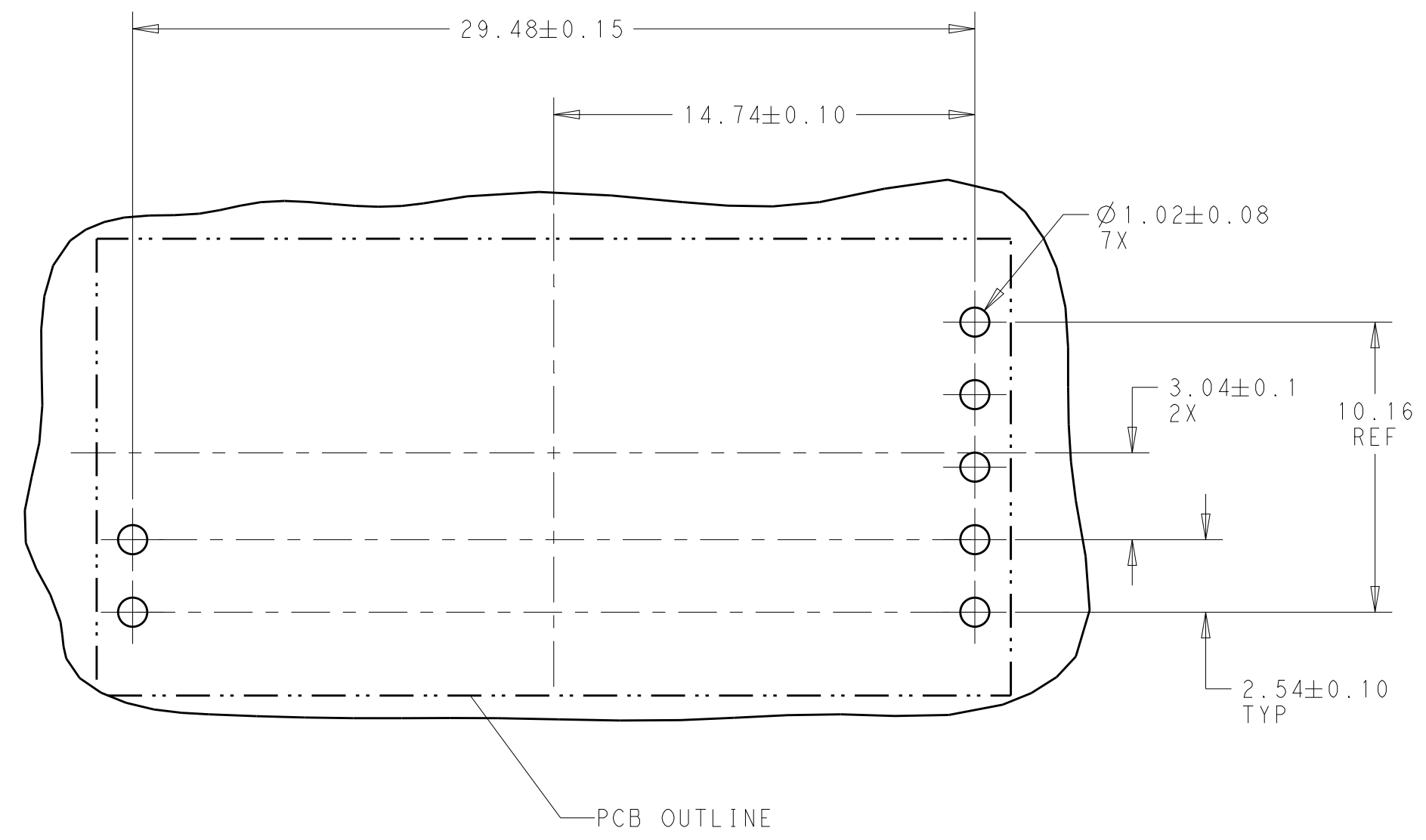
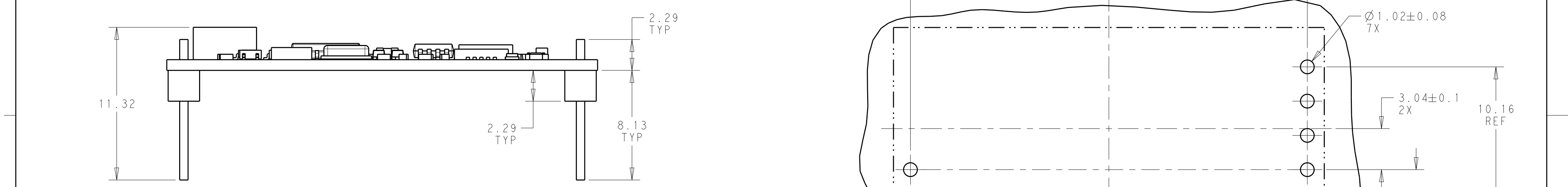
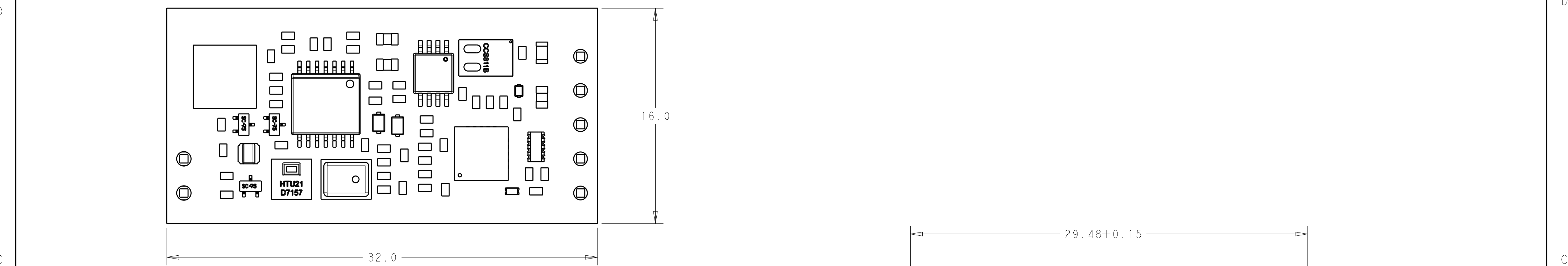
C



<p>1-2314291-1 SHOWN</p>	<p>MICROPHONE</p> <p>1-2314291-2 SHOWN</p>	w/MICROPHONE , w/ø HEADER , w/CO2	A	1-2314291-2
		w/ø MICROPHONE , w/ø HEADER , w/CO2	A	1-2314291-1
		w/MICROPHONE , w/HEADER , w/CO2	A	2314291-2
		w/ø MICROPHONE , w/HEADER , w/CO2	A	2314291-1
COMMENTS		REV	PART NO.	

THIS DRAWING IS A CONTROLLED DOCUMENT.		DWN J. SHAFFER CHK C. GINGRICH APVD -	10MAR2017 10MAR2017	TE Connectivity		
DIMENSIONS: mm	TOLERANCES UNLESS OTHERWISE SPECIFIED: 0 PLC ± 1 PLC ±0.4 2 PLC ±0.25 3 PLC ± 4 PLC ± ANGLES ± FINISH	PRODUCT SPEC 108-133092 APPLICATION SPEC 114-133092 WEIGHT -				
MATERIAL -		CUSTOMER DRAWING		SCALE 3:1	SHEET 1 OF 2	REV A2

NAME AMBIMATE, MSM4 SENSOR MODULE, THRU HOLE, WITH CO2		SIZE A2	CAGE CODE -	DRAWING NO. C=2314291	RESTRICTED TO -
---	--	------------	----------------	--------------------------	--------------------



THIS DRAWING IS A CONTROLLED DOCUMENT.

DWN  
J. SHAFFER  
CHK  
C. GINGRICH  
APVD  
-

10MAR2017  
10MAR2017

DIMENSIONS:  
mm

TOLERANCES UNLESS OTHERWISE SPECIFIED:  
0 PLC ±  
1 PLC ±0.4  
2 PLC ±0.25  
3 PLC ±  
4 PLC ±  
ANGLES ±  
FINISH -

PRODUCT SPEC  
108-133092  
APPLICATION SPEC  
114-133092  
WEIGHT  
-

CUSTOMER DRAWING

NAME  
AMBIMATE, MSM4 SENSOR MODULE,  
THRU HOLE, WITH CO2

SIZE  
A2

CAGE CODE  
-

DRAWING NO  
C-2314291

RESTRICTED TO  
-

SCALE  
3:1

SHEET  
2 OF 2

REV  
A2

TE Connectivity