



Chipsmall Limited consists of a professional team with an average of over 10 year of expertise in the distribution of electronic components. Based in Hongkong, we have already established firm and mutual-benefit business relationships with customers from,Europe,America and south Asia,supplying obsolete and hard-to-find components to meet their specific needs.

With the principle of "Quality Parts,Customers Priority,Honest Operation,and Considerate Service",our business mainly focus on the distribution of electronic components. Line cards we deal with include Microchip,ALPS,ROHM,Xilinx,Pulse,ON,Everlight and Freescale. Main products comprise IC,Modules,Potentiometer,IC Socket,Relay,Connector.Our parts cover such applications as commercial,industrial, and automotives areas.

We are looking forward to setting up business relationship with you and hope to provide you with the best service and solution. Let us make a better world for our industry!



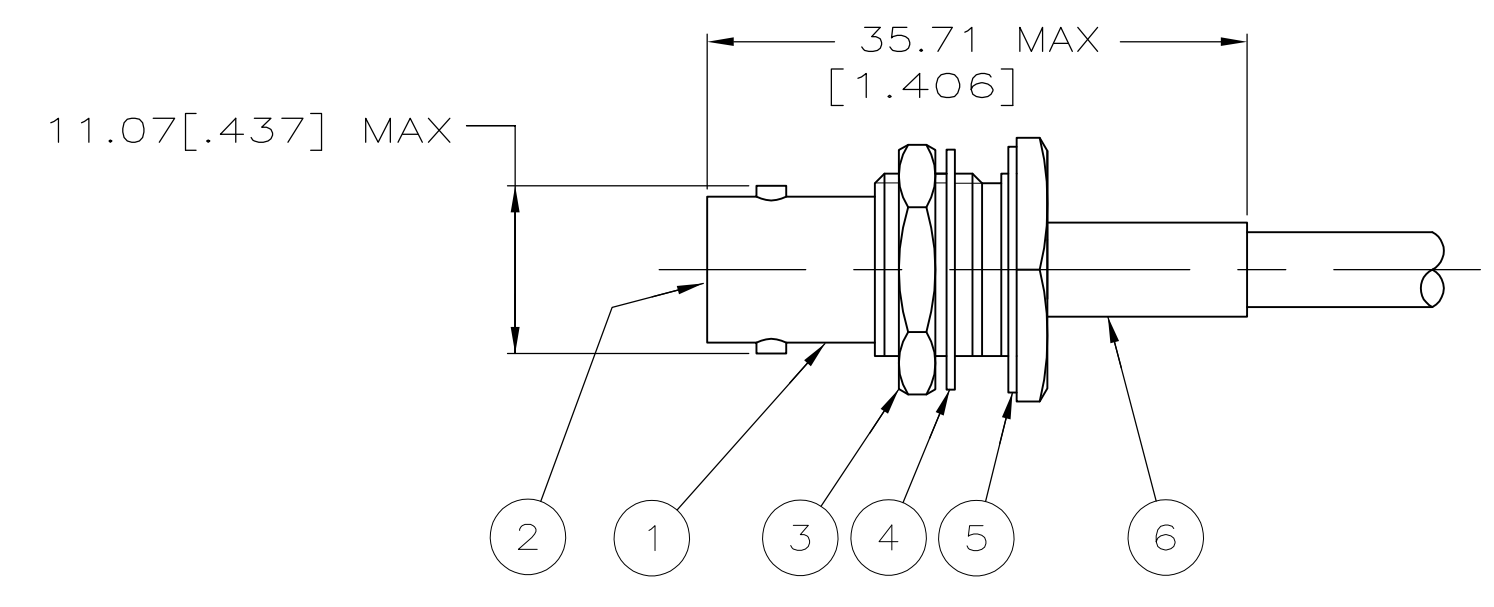
## Contact us

Tel: +86-755-8981 8866 Fax: +86-755-8427 6832

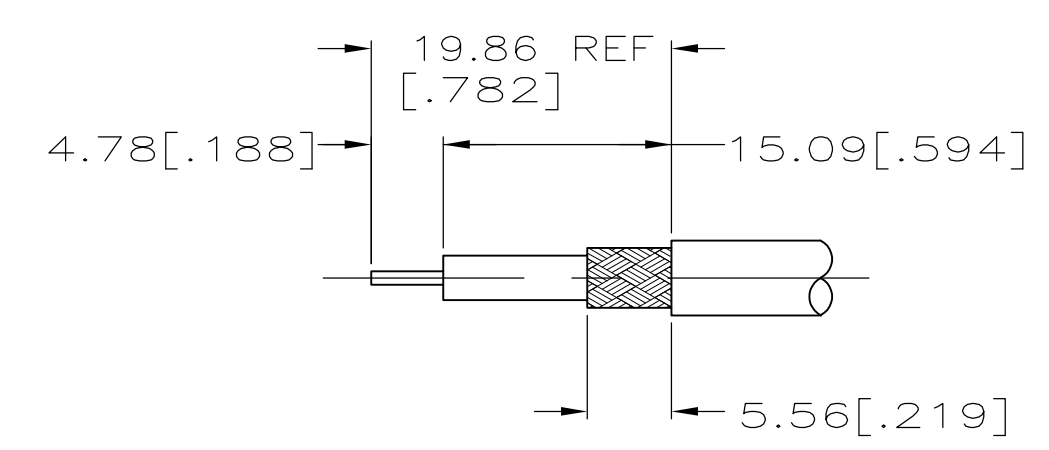
Email & Skype: info@chipsmall.com Web: www.chipsmall.com

Address: A1208, Overseas Decoration Building, #122 Zhenhua RD., Futian, Shenzhen, China

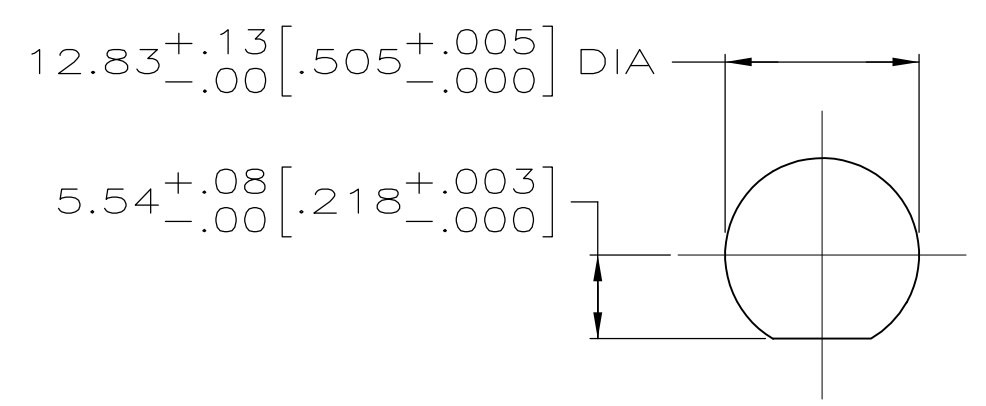




1. MAX PANEL THICKNESS: 6.10 [.240]  
 2. SEE I.S. 1914-3



RECOMMENDED STRIP LENGTH



SUGGESTED PANEL CUTOUT

	220009-1	RG-174/U & 188/U	TYCO 6-331693-2	-	21427-4	9-329631-0	9-329632-0	329633	1883188-1	1-331368-2	1883623-1	6-331693-2
OBSOLETE	69477-2	TWISTED PAIR (SPECIAL)	-	-	21427-4	1-329631-2	1-329632-2	329633	2-329461-7	3-331368-9	227461-1	3-331693-0
OBSOLETE	69477-1	RG-174/U	AMP & 2-331693-9	-	-	329631	329632	329633	50428-1	1-331368-2	1-331786-0	2-331693-9
OBSOLETE	69477-2	IBM 5353914 & BRAND REX T209	-	226171-2	-	1-329631-2	1-329632-2	329633	2-329049-4	2-331368-2	227461-1	2-331693-8
OBSOLETE	69477-2	RAYCHEM 7524A1312	AMP & 2-331693-7	-	-	329631	329632	329633	329461	2-331368-3	1-331786-1	2-331693-7
OBSOLETE	69477-2	TWISTED PAIR (SPECIAL)	AMP & 2-331693-6	-	21427-4	329631	329632	329633	329461	2-331368-3	1-331786-1	2-331693-6
OBSOLETE	69477-2	IBM 5353914 & BRAND REX T209A	-	226171-2	-	329631	329632	329633	2-329049-1	2-331368-2	1-331786-7	2-331693-5
SUPERSEDED BY 225398-6	69478-1	RG-142/U,142A/U & 142B/U	00779 M39012/19B0006 YY WW	-	-	1-329631-9	329632	329633	329099	2-331369-4	331786	1-331693-8
SUPERSEDED BY 225398-3	69478-1	RG-55/U,55A/U,55B/U & 223/U	00779 M39012/19B0004 YY WW	-	-	1-329631-9	329632	329633	329099	2-331369-3	331786	1-331693-6
SUPERSEDED BY 225398-9	69477-2	RG-180/U,180A/U & 195/U	AMP & 1-331693-4	-	-	329631	329632	329633	329461	1-331368-4	1-331786-1	1-331693-4
SUPERSEDED BY 225398-8	220009-1	RG-179/U & 187/U	AMP & 1-331693-3	-	21427-4	329631	329632	329633	2-328666-3	1-331368-4	1-331786-1	1-331693-3
	220009-1	RG-174/U & 188/U	AMP & 1-331693-2	-	21427-4	329631	329632	329633	2-328666-3	1-331368-2	1-331786-1	1-331693-2
	69478-1	RG-58/U,58A/U,58B/U & 58C/U	00779 M39012/19B0003 YY WW	-	-	1-329631-9	329632	329633	9-50427-3	2-331369-3	331786	1-331693-1
	69477-2	AMPHENOL 21-597	AMP & 1-331693-0	-	-	329631	329632	329633	329461	1-331368-2	1-331786-1	1-331693-0
OBSOLETE	69477-1	RG-59/U,59A/U,59B/U,62/U,62A/U & 62B/U	00779 M39012/19B0007 YY WW	-	-	1-329631-9	329632	329633	50428-1	3-331368-9	1-331786-0	331693

USE CRIMPING TOOL	FOR USE WITH CABLE	STAMPING	⑧ TUBING QTY=1	⑦ BUSHING QTY=1	⑥ JAM NUT QTY=1	⑤ LOCK WASHER QTY=1	④ GASKET QTY=1	③ FERRULE QTY=1	② CONTACT QTY=1	① JACK ASSY QTY=1	ASSY NO
-------------------	--------------------	----------	----------------	-----------------	-----------------	---------------------	----------------	-----------------	-----------------	-------------------	---------

THIS DRAWING IS A CONTROLLED DOCUMENT.

DIMENSIONS: INCHES	TOLERANCES UNLESS OTHERWISE SPECIFIED:	DIN P. ALSEDEK 5-7-90	CHK R.E. RUTH 9/6/90	APVD	NAME	
0 PLC ± -	1 PLC ± -	2 PLC ± -	3 PLC ± 4[.016]	4 PLC ± -	ANGLES ± -	
MATERIAL	FINISH	WEIGHT	SIZE	CAGE CODE	DRAWING NO	RESTRICTED TO
-	-	-	A1	00779	331693	-
CUSTOMER DRAWING			SCALE 2:1	SHEET 1 OF 1	REV V	

**STE** TE Connectivity  
 JACK, BULKHEAD, DUAL CRIMP, BNC