



Chipsmall Limited consists of a professional team with an average of over 10 year of expertise in the distribution of electronic components. Based in Hongkong, we have already established firm and mutual-benefit business relationships with customers from,Europe,America and south Asia,supplying obsolete and hard-to-find components to meet their specific needs.

With the principle of “Quality Parts,Customers Priority,Honest Operation,and Considerate Service”,our business mainly focus on the distribution of electronic components. Line cards we deal with include Microchip,ALPS,ROHM,Xilinx,Pulse,ON,Everlight and Freescale. Main products comprise IC,Modules,Potentiometer,IC Socket,Relay,Connector.Our parts cover such applications as commercial,industrial, and automotives areas.

We are looking forward to setting up business relationship with you and hope to provide you with the best service and solution. Let us make a better world for our industry!



## Contact us

Tel: +86-755-8981 8866 Fax: +86-755-8427 6832

Email & Skype: [info@chipsmall.com](mailto:info@chipsmall.com) Web: [www.chipsmall.com](http://www.chipsmall.com)

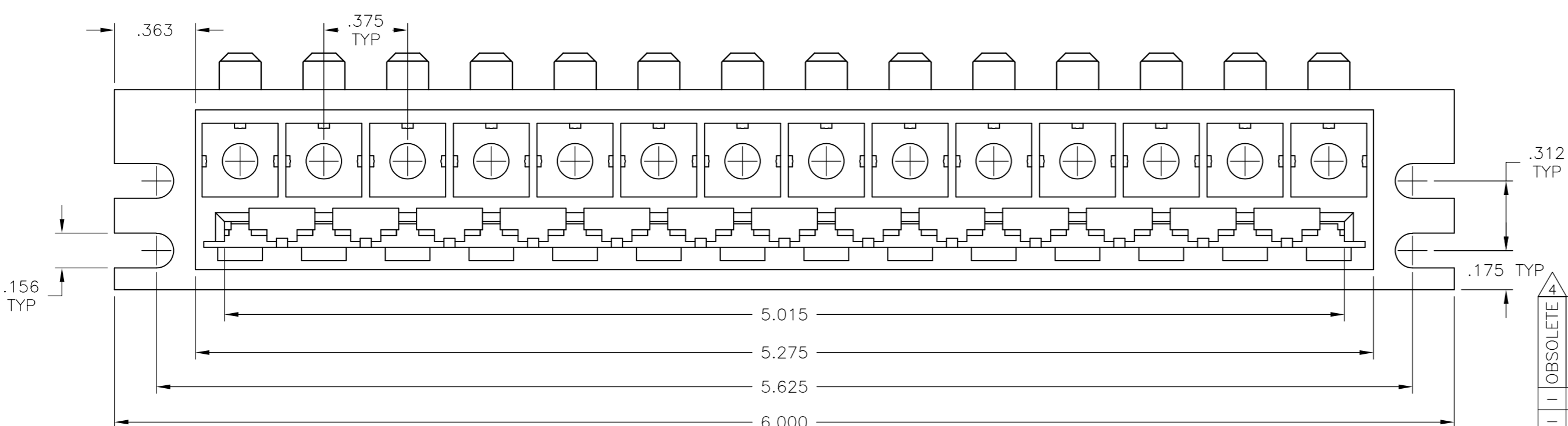
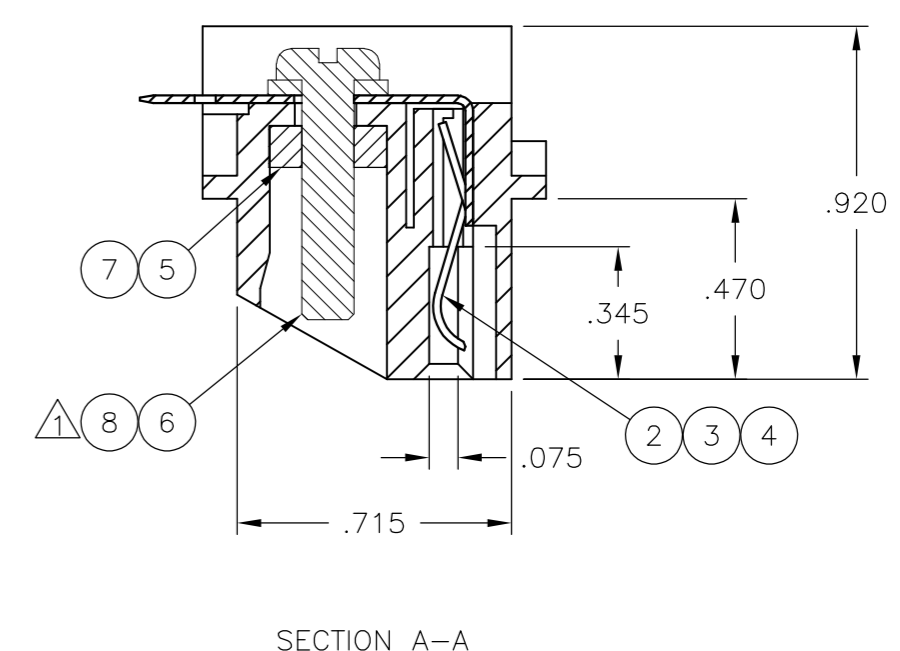
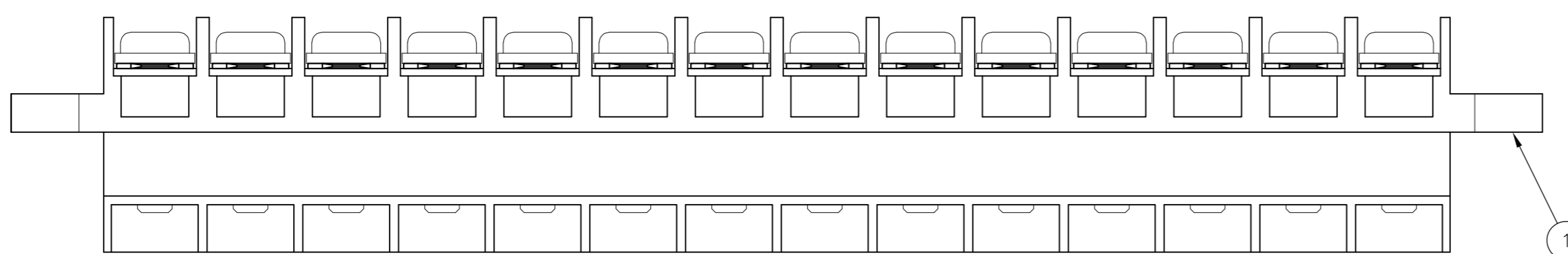
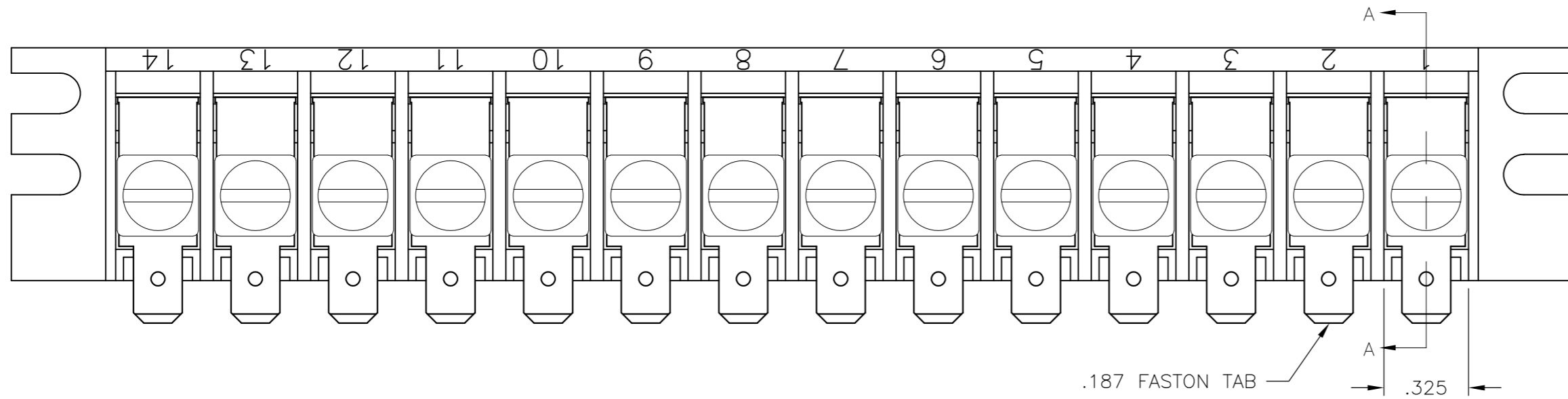
Address: A1208, Overseas Decoration Building, #122 Zhenhua RD., Futian, Shenzhen, China



THIS DRAWING IS UNPUBLISHED. RELEASED FOR PUBLICATION  
 © COPYRIGHT BY TYCO ELECTRONICS CORPORATION. ALL RIGHTS RESERVED.

LOC	DIST	REVISIONS					
		P	LTR	DESCRIPTION	DATE	DWN	APVD
FT	0		N	REVISED PER ECO-07-004106	2/22/07	SS	DC
			N1	REVISED PER ECO-09-021510	05SEP09	KK	AEG

- △ ACCEPTS .062±.007 PRINTED CIRCUITS BOARD.
- 2. MAX ALLOWABLE BOW TO BE .003 PER INCH OF HOUSING.
- 3. 1-380914-0 AND 1-380914-2 IS ALLOWED TO USE ITEM 7 AND 8 AS SUBSTITUTES FOR ITEM 5 AND 6.
- △ OBSOLETE PARTS: OBSOLETE CIS STREAMLINING PER D.RENAUD/D.SINISI



QTY	QTY	QTY	QTY	QTY	QTY	MATERIAL	DESCRIPTION	ITEM NO.
4	4	4	4	4	4			
14	14	14	14	14	14	6-32, STEEL, GOLD PLATE	CLAMP ASSY	8
14	14	14	14	14	14	6-32, STEEL, ZINC NON-HEXAVALENT	NUT	7
14	14	14	14	14	14	6-32, STEEL, GOLD PLATE	CLAMP ASSY	6
14	14	14	14	14	14	6-32, STEEL, ZINC HEXAVALENT	NUT	5
14	14	14	14	14	14	.020 PH BRZ, GOLD	CONTACT	4
14	14	14	14	14	14	.020 PH BRZ, TIN	CONTACT	3
14	14	14	14	14	14	.020 PH BRZ, GOLD FLASH	CONTACT	2
1	1	1	1	1	1	POLYCARBONATE, GRAY	HOUSING	1

THIS DRAWING IS A CONTROLLED DOCUMENT.

DWN	S SCHLEGEL	2/22/07
CHK	D COURS	2/22/07
APVD	D COURS	2/22/07
PRODUCT SPEC		
APPLICATION SPEC		
WEIGHT	-	
CUSTOMER DRAWING		

**Tyco Electronics** Tyco Electronics Corporation  
Harrisburg, PA 17105-3608

NAME: EDGE CONNECTOR ASSY  
14 CIRCUIT MULTI-TAP

SIZE: A2 CAGE CODE: 00779 DRAWING NO: 380914 RESTRICTED TO: -

SCALE: 2:1 SHEET: 1 OF 1 REV: N1