



Chipsmall Limited consists of a professional team with an average of over 10 year of expertise in the distribution of electronic components. Based in Hongkong, we have already established firm and mutual-benefit business relationships with customers from,Europe,America and south Asia,supplying obsolete and hard-to-find components to meet their specific needs.

With the principle of “Quality Parts,Customers Priority,Honest Operation,and Considerate Service”,our business mainly focus on the distribution of electronic components. Line cards we deal with include Microchip,ALPS,ROHM,Xilinx,Pulse,ON,Everlight and Freescale. Main products comprise IC,Modules,Potentiometer,IC Socket,Relay,Connector.Our parts cover such applications as commercial,industrial, and automotives areas.

We are looking forward to setting up business relationship with you and hope to provide you with the best service and solution. Let us make a better world for our industry!



Contact us

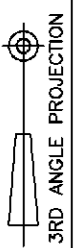
Tel: +86-755-8981 8866 Fax: +86-755-8427 6832

Email & Skype: info@chipsmall.com Web: www.chipsmall.com

Address: A1208, Overseas Decoration Building, #122 Zhenhua RD., Futian, Shenzhen, China

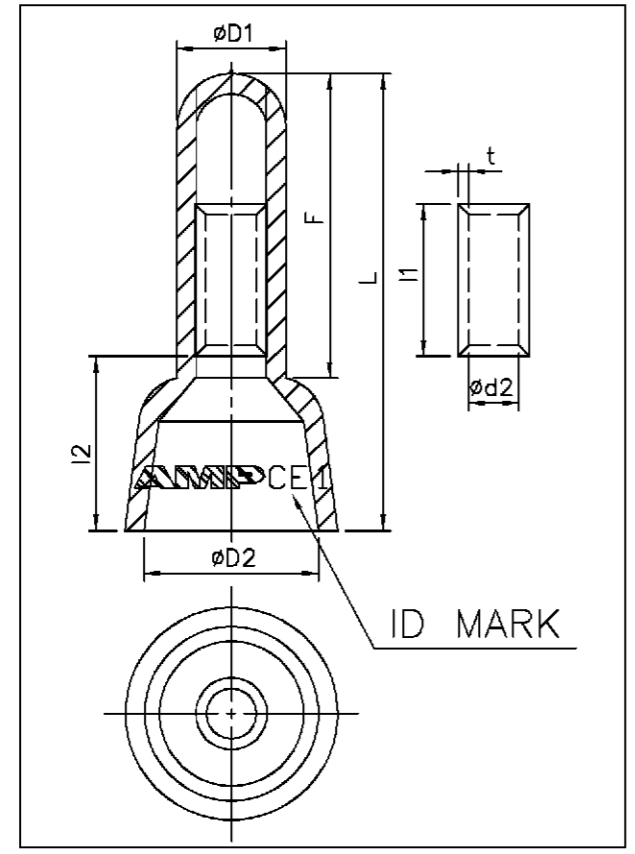


NUMBER C-440386



METRIC

	NAME	AMP P/N	ID MARK	WIRE RANGE	∅D1	F	L	∅D2	I1	t	∅d2	I2	MATERIAL	COLOR	QTY	BOX SIZE
9 OBSOLETE	CE1-94V2	1-440386-1	CE 1	△1.0~1.75mm ² △0.3(AWG#22) △0.5(AWG#20)	4.8 ±0.3	13.5 ±0.5	21.0 ±1.0	8.0 ±0.5	7.0 ±0.5	0.5 ±0.02	2.3 ±0.2	8.5 ±0.5	UL 94V2	NATURAL	1,000	PM2
8 OBSOLETE	CE1-94V0	1-440386-2	CE 1	0.75(AWG#18) 1.25(AWG#16)	4.8 ±0.3	13.5 ±0.5	21.0 ±1.0	8.0 ±0.5	7.0 ±0.5	0.5 ±0.02	2.3 ±0.2	8.5 ±0.5	UL 94V0	WHITE	1,000	PM2
	CE2-94V2	2-440386-1	CE 2	△1.0~3.0mm ² △0.5(AWG#20) 0.75(AWG#18)	5.5 ±0.3	13.5 ±0.5	22.0 ±1.0	8.5 ±0.5	7.0 ±0.5	0.45 ±0.02	3.1 ±0.2	9.5 ±0.5	UL 94V2	NATURAL	1,000	PM2
8 OBSOLETE	CE2-94V0	2-440386-2	CE 2	1.25(AWG#16) 2.0(AWG#14)	5.5 ±0.3	13.5 ±0.5	22.0 ±1.0	8.5 ±0.5	7.0 ±0.5	0.45 ±0.02	3.1 ±0.2	9.5 ±0.5	UL 94V0	WHITE	1,000	PM2
	CE5-94V2	5-440386-1	CE 5	△2.5~6.0mm ² △0.5(AWG#20) 0.75(AWG#18)	7.3 ±0.3	14.5 ±0.5	25.0 ±1.0	10.0 ±0.5	7.5 ±0.5	0.7 ±0.02	4.0 ±0.2	11.5 ±0.5	UL 94V2	NATURAL	500	PM2
	CE5-94V0	5-440386-2	CE 5	1.25(AWG#16) 2.0(AWG#14) 3.5(AWG#12) 5.5(AWG#10)	7.3 ±0.3	14.5 ±0.5	25.0 ±1.0	10.0 ±0.5	7.5 ±0.5	0.7 ±0.02	4.0 ±0.2	11.5 ±0.5	UL 94V0	WHITE	500	PM2
8 OBSOLETE	CE8-94V2	8-440386-1	CE 8	△4.0~9.0mm ² △0.5(AWG#20) 0.75(AWG#18)	9.15 ±0.3	18.0 ±0.5	29.0 ±1.0	12.0 ±0.5	8.5 ±0.5	1.25 ±0.02	4.4 ±0.2	12.0 ±0.5	UL 94V2	NATURAL	250	PM2
	CE8-94V0	8-440386-2	CE 8	1.25(AWG#16) 2.0(AWG#14) 3.5(AWG#12) 5.5(AWG#10)	9.15 ±0.3	18.0 ±0.5	29.0 ±1.0	12.0 ±0.5	8.5 ±0.5	1.25 ±0.02	4.4 ±0.2	12.0 ±0.5	UL 94V0	WHITE	250	PM2



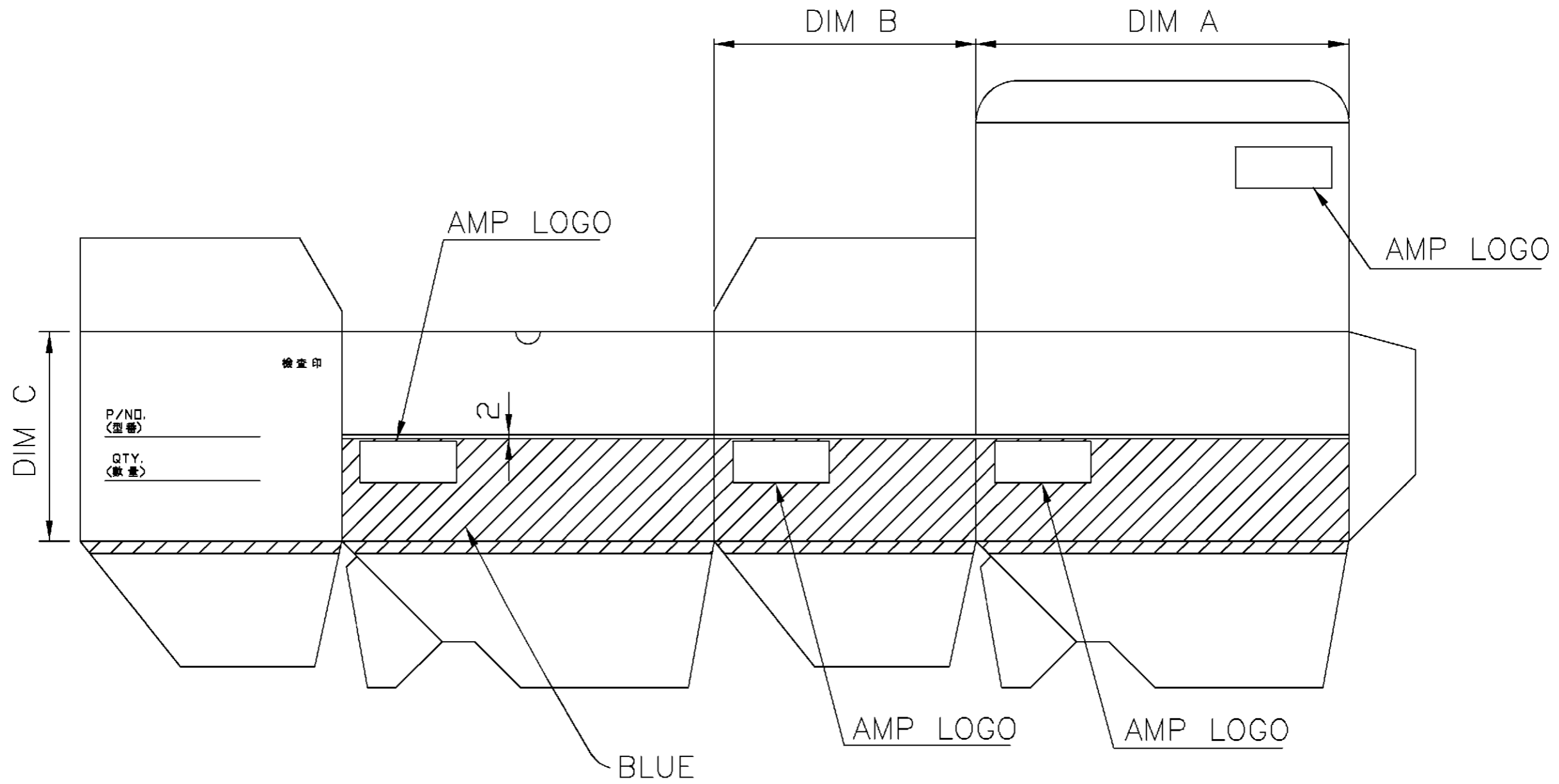
- NOTE :
- 1.TERMINAL : NYLON INSULATED WITH TUBULAR
 - 2.BASIC TERMINALS MATERIAL : FINE GRADE HIGH CONDUCTIVITY COPPER PER JIS H3300
 - 3.INSULATION MATERIAL : NYLON (SEE TABLE).
 - 4.MAXIMUM TEMPERATURE : -40°Cto105° C
 - 5.PLATING : TIN PLATED [2.5um MIN]
 - △6 CROSS SECTIONAL AREA (TOTAL)
 - △0.3mm²~0.5mm² WILL BE CRIMPED WITH DOUBLE WIRE SIZE. (0.3X2, 0.5X2)
 - △8 OBSOLETE PARTS: OBSOLETE CIS STREAMLINING PER D.RENAUD/D.SINISI
 - △9 OBSOLETE

DIMENSION :	0 PLC ±0.5	DR.	O. HU	TE Connectivity
	1 PLC ±0.25	26NOV 09	20-JUN-2001	
MATERIAL	2 PLC ±0.12	OH	J. CHENG	NAME
	3 PLC ±0.08	JC	20-JUN-2001	
FINISH	ANGLES ±3°	DR	J. WU	CLOSED END SPLICE TERMINAL
		CHK	20-JUN-2001	
SEE NOTE		DATE		LOC SIZE DRAWING NO REV
				DW A3 C-440386 E
				SCALE SHEET
				1 OF 2

E	REVISED PER ECR-15-013225	KK	E.T	08SEP15
D1	REVISED PER ECO-09-026346	KK	AEG	26NOV 09
D	REVISED	OH	JC	20JUN 2001
C	REVISED	OH	JC	06MAR 2001
LTR	REVISION RECORD	DR	CHK	DATE

THIS INFORMATION IS CONFIDENTIAL AND IS DISCLOSED TO YOU ON CONDITION THAT NO FURTHER DISCLOSURE IS MADE BY YOU TO OTHER THAN AMP PERSONNEL WITHOUT WRITTEN AUTHORIZATION FROM AMP (TAIWAN) LTD. DIMENSION IN MILLIMETERS. DO NOT SCALE PRINT.

PRINT DW



BOX SIZE	INNER	DIM A	DIM B	DIM C
PM1	PS1*10	160	115	48
PM2	PS2*10	160	115	96
	PS3*5			

DIMENSION : 0 PLC ±0.5 1 PLC ±0.25 2 PLC ±0.12 3 PLC ±0.08 ANGLES ±3°	DR. O. HU 20-JUN-2001	 NAME CLOSED END SPLICE TERMINAL
	CHK. J. CHENG 20-JUN-2001	
MATERIAL SEE NOTE	APP. J. WU 20-JUN-2001	
FINISH SEE NOTE	PRODUCT SPEC	
	APPLICATION SPEC	LOC DW A ₃
	WEIGHT	DRAWING NO C-440386
		REV E
		SCALE --
		SHEET 2 OF 2

SEE SHEET 1			
LTR	REVISION RECORD	ECN	DR. CHK. DATE