



Chipsmall Limited consists of a professional team with an average of over 10 year of expertise in the distribution of electronic components. Based in Hongkong, we have already established firm and mutual-benefit business relationships with customers from,Europe,America and south Asia,supplying obsolete and hard-to-find components to meet their specific needs.

With the principle of “Quality Parts,Customers Priority,Honest Operation,and Considerate Service”,our business mainly focus on the distribution of electronic components. Line cards we deal with include Microchip,ALPS,ROHM,Xilinx,Pulse,ON,Everlight and Freescale. Main products comprise IC,Modules,Potentiometer,IC Socket,Relay,Connector.Our parts cover such applications as commercial,industrial, and automotives areas.

We are looking forward to setting up business relationship with you and hope to provide you with the best service and solution. Let us make a better world for our industry!



Contact us

Tel: +86-755-8981 8866 Fax: +86-755-8427 6832

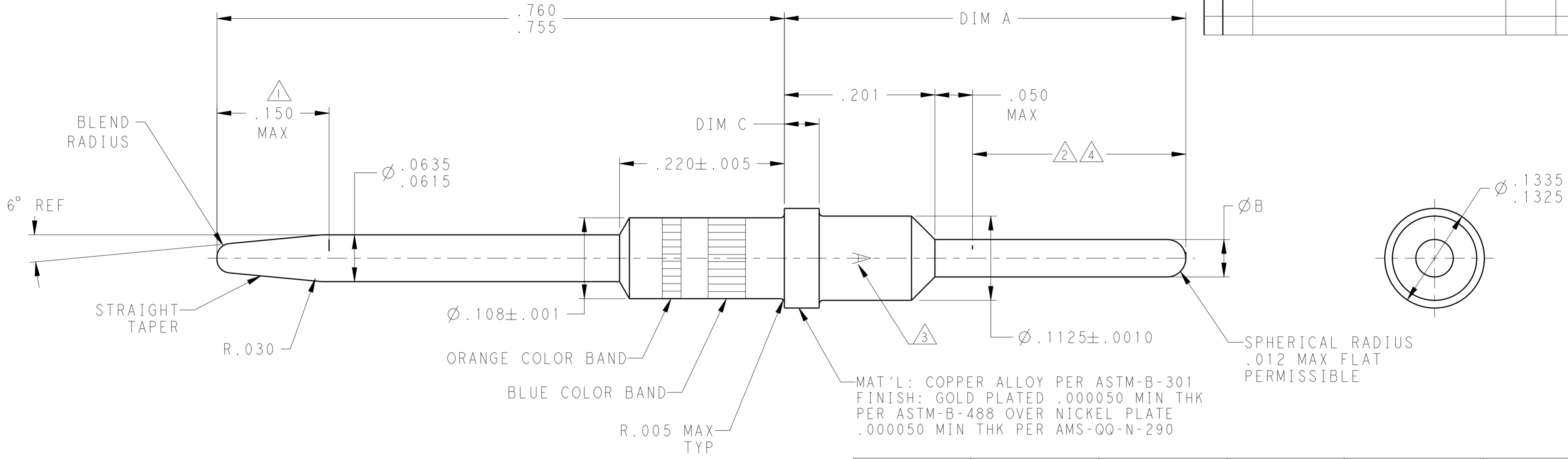
Email & Skype: info@chipsmall.com Web: www.chipsmall.com

Address: A1208, Overseas Decoration Building, #122 Zhenhua RD., Futian, Shenzhen, China



THIS DRAWING IS UNPUBLISHED. RELEASED FOR PUBLICATION
 © COPYRIGHT - BY TYCO ELECTRONICS CORPORATION. ALL INTERNATIONAL RIGHTS RESERVED.

LOC	DIST	REVISIONS			
P	LTR	DESCRIPTION	DATE	DWN	APVD
	U	REV PER ECO 10-024936	1-5-11	CT	KT
	V	REV PER ECO-12-014446	19DEC2012	RJM3	RG



--	.0445-.0485	.048-.052	.776	--	4-448139-3
2 4	.044-.048	.059 MAX	.701	--	4-448139-0
2	.044-.048	.059 MAX	.701	--	3-448139-9
--	.044-.048	.048-.052	.701±.005	--	3-448139-8
2	.044-.048	.059 MAX	.617±.005	--	3-448139-5
2 4	.044-.048	.059 MAX	.617±.005	--	3-448139-4
2	.0445-.0485	.048-.052	.606	--	3-448139-3
--	.0445-.0485	.059 MAX	.826±.005	--	3-448139-0
2	.0445-.0485	.048-.052	.826±.005	--	2-448139-9
--	.0445-.0485	.048-.052	.576	--	2-448139-5
2	.0445-.0485	.059 MAX	.651	--	2-448139-2
--	.044-.048	.048-.052	.468±.005	--	2-448139-1
2	.044-.048	.048-.052	.617±.005	--	1-448139-8
2	.0445-.0485	.059 MAX	.536±.005	--	1-448139-5
--	.044-.048	.048-.052	.505±.005	--	1-448139-4
--	.0445-.0485	.048-.052	.536	906-60033-18	1-448139-1
5	.0445-.0485	.0615-.0630	.415	--	448139-8
--	.0445-.0485	.048-.052	.651	906-60033-8	448139-6
--	.0445-.0485	.048-.052	.536	906-60033-4	448139-3
REMARKS	DIM C	DIM B	DIM A	CUSTOMER PART NO.	PART NO.

- 1 ELECTRICAL ENGAGEMENT POINT.
- 2 THIS AREA SOLDER DIPPED.
- 3 MANUFACTURERS LOGO; LACATION & ORIENTATION OPTIONAL.
- 4 SOLDER IS RoHS-COMPLIANT Sn.
- 5 COLOR CODE OMITTED.

THIS DRAWING IS A CONTROLLED DOCUMENT FOR TYCO ELECTRONICS CORPORATION. IT IS SUBJECT TO CHANGE AND THE CONTROLLING ENGINEERING ORGANIZATION SHOULD BE CONTACTED FOR THE LATEST REVISION.

DWN: C.C. THOMAS 27OCT2009
 CHK: K. THACKSTON 27OCT2009
 APVD: K. THACKSTON 27OCT2009

Tyco Electronics
 Tyco Electronics
 Harrisburg, PA 17105-3608

NAME: POSTED PIN CONTACT, SIZE 16, ARINC 600
 PRODUCT SPEC: -
 APPLICATION SPEC: -
 WEIGHT: -

MATERIAL: SEE TABLE
 FINISH: SEE CALLOUTS

SIZE: A200779
 CAGE CODE: C-448139
 DRAWING NO: -
 RESTRICTED TO: -

CUSTOMER DRAWING
 SCALE: 10:1
 SHEET 1 OF 1
 REV V