



Chipsmall Limited consists of a professional team with an average of over 10 year of expertise in the distribution of electronic components. Based in Hongkong, we have already established firm and mutual-benefit business relationships with customers from,Europe,America and south Asia,supplying obsolete and hard-to-find components to meet their specific needs.

With the principle of “Quality Parts,Customers Priority,Honest Operation,and Considerate Service”,our business mainly focus on the distribution of electronic components. Line cards we deal with include Microchip,ALPS,ROHM,Xilinx,Pulse,ON,Everlight and Freescale. Main products comprise IC,Modules,Potentiometer,IC Socket,Relay,Connector.Our parts cover such applications as commercial,industrial, and automotives areas.

We are looking forward to setting up business relationship with you and hope to provide you with the best service and solution. Let us make a better world for our industry!



## Contact us

Tel: +86-755-8981 8866 Fax: +86-755-8427 6832

Email & Skype: [info@chipsmall.com](mailto:info@chipsmall.com) Web: [www.chipsmall.com](http://www.chipsmall.com)

Address: A1208, Overseas Decoration Building, #122 Zhenhua RD., Futian, Shenzhen, China



4

3

2

1

THIS DRAWING IS UNPUBLISHED.

RELEASED FOR PUBLICATION

, 19

© COPYRIGHT 19

BY AMP INCORPORATED. ALL RIGHTS RESERVED.

LOC

DIST

REVISIONS

AF

50

P

LTR

DESCRIPTION

DATE

DWN

APVD

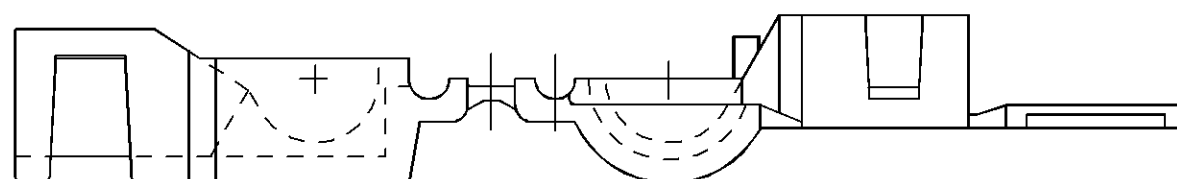
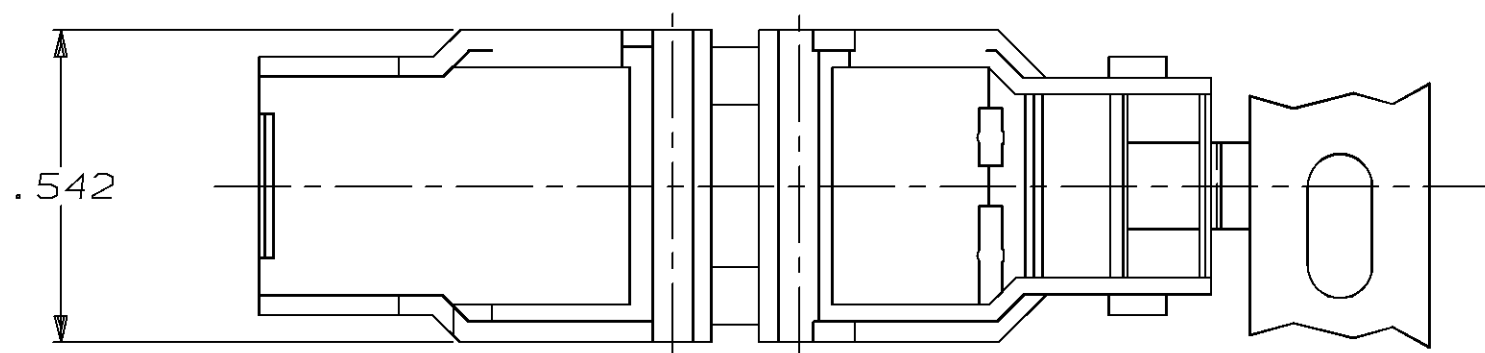
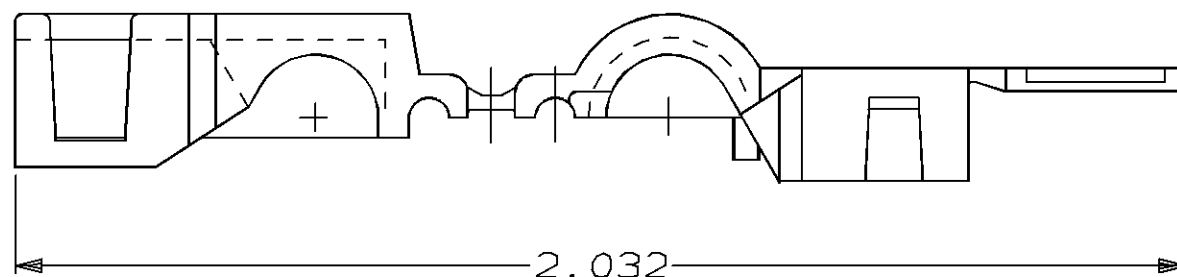
P

REDRAWN PER 0L10-0046-97

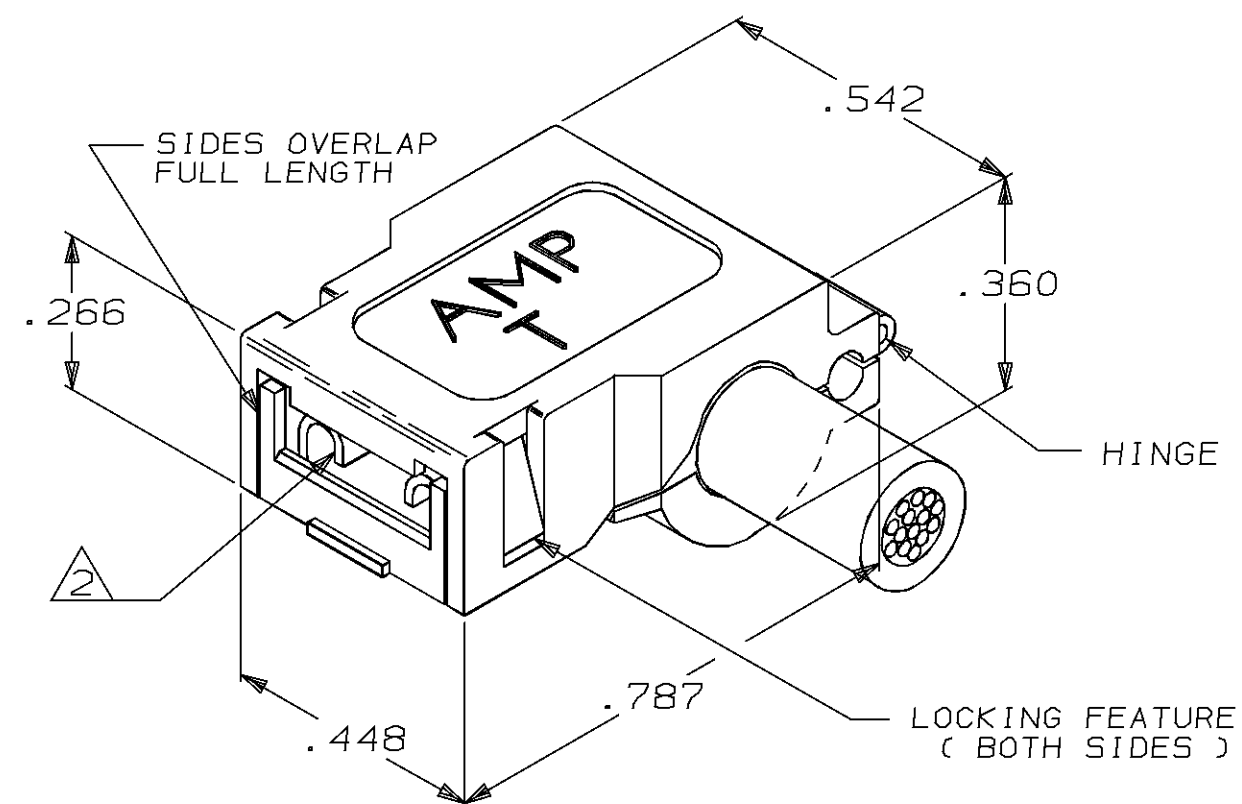
2/11/97

JR

RB



- 1 CONTINUOUS STRIP ON REELS.
- 2 THIS PART ACCEPTS .250 SERIES FASTON FLAG RECEPTACLES PART NUMBERS 41531, 41532, 42511, 60641 AND 60645.
- 3 SEE CP-23587 FOR RECOMMENDED TAB DETAILS.
- 4 UL RATING OF 125°C
- 5 MAX INSULATION IS .210.



1-480298-0

PART NO.

THIS DRAWING IS A CONTROLLED DOCUMENT.

DWN 1/24/97

JR RUTH

CHK 1/24/97

MS FEHER

APVD 1/24/97

R BEAVER

PRODUCT SPEC

-

APPLICATION SPEC

-

WEIGHT

-

CUSTOMER DRAWING

**AMP**AMP Incorporated  
Harrisburg, PA 17105-3608

NAME

INSULATION POD, AMPIP-POST

SIZE

CAGE CODE

DRAWING NO

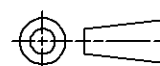
RESTRICTED TO

A3 00779 C-480298

SCALE 4:1

SHEET 1 OF 1

REV P

DIMENSIONS:  
INCHESTOLERANCES UNLESS  
OTHERWISE SPECIFIED,0 PLC ±  
1 PLC ±  
2 PLC ±  
3 PLC ±.015  
4 PLC ±  
ANGLES ±  
FINISH

MATERIAL 6/6 NYLON

NATURAL