



Chipsmall Limited consists of a professional team with an average of over 10 year of expertise in the distribution of electronic components. Based in Hongkong, we have already established firm and mutual-benefit business relationships with customers from,Europe,America and south Asia,supplying obsolete and hard-to-find components to meet their specific needs.

With the principle of “Quality Parts,Customers Priority,Honest Operation,and Considerate Service”,our business mainly focus on the distribution of electronic components. Line cards we deal with include Microchip,ALPS,ROHM,Xilinx,Pulse,ON,Everlight and Freescale. Main products comprise IC,Modules,Potentiometer,IC Socket,Relay,Connector.Our parts cover such applications as commercial,industrial, and automotives areas.

We are looking forward to setting up business relationship with you and hope to provide you with the best service and solution. Let us make a better world for our industry!



Contact us

Tel: +86-755-8981 8866 Fax: +86-755-8427 6832

Email & Skype: info@chipsmall.com Web: www.chipsmall.com

Address: A1208, Overseas Decoration Building, #122 Zhenhua RD., Futian, Shenzhen, China



LOC		DIST		REVISIONS					
CM	00	P	LTR	DESCRIPTION			DATE	DWN	APVD
			AK3	REVISED PER ECO-12-003860			08MAR12	JR	TM

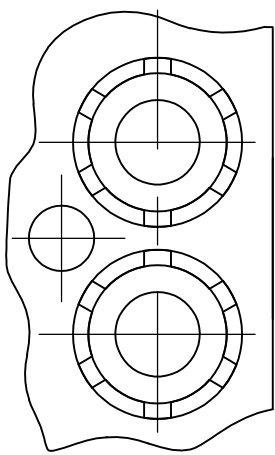
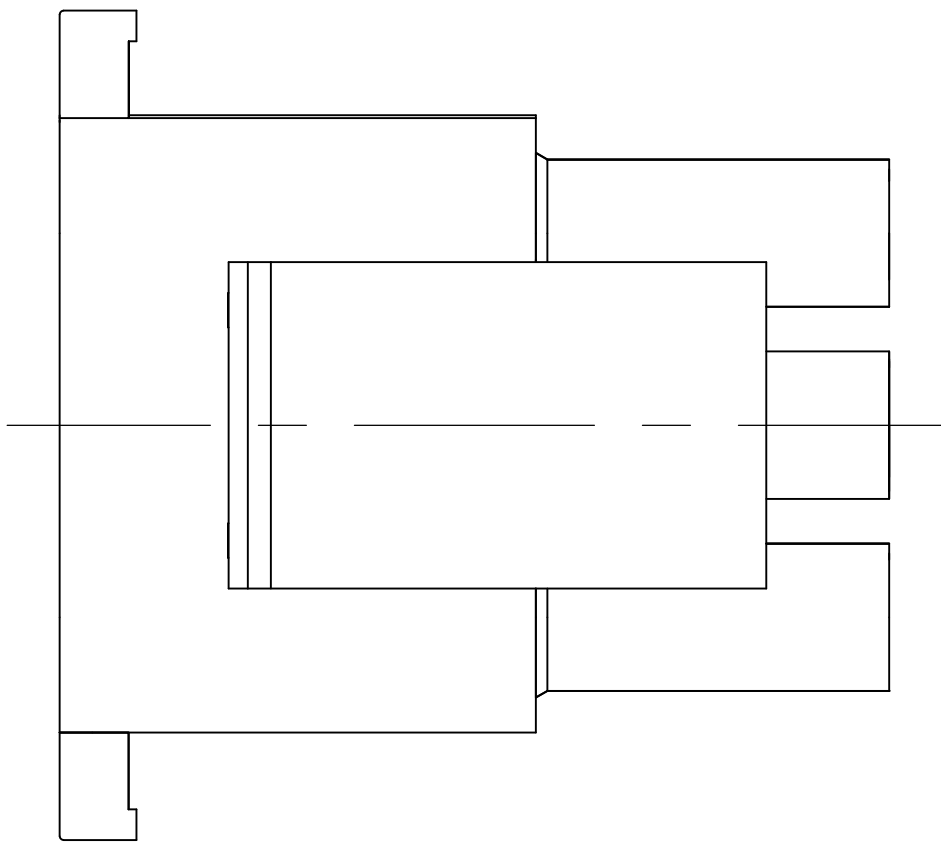
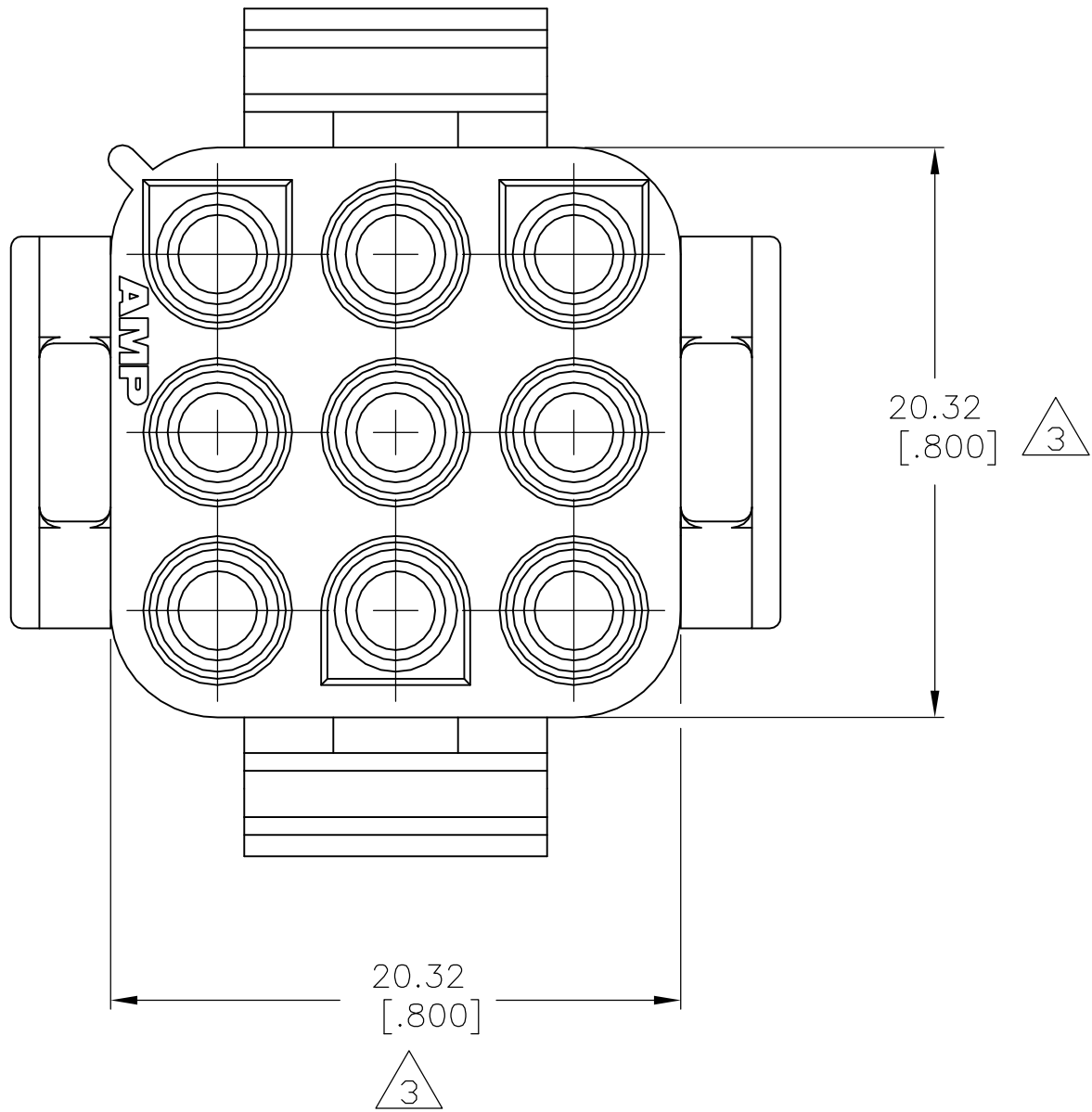
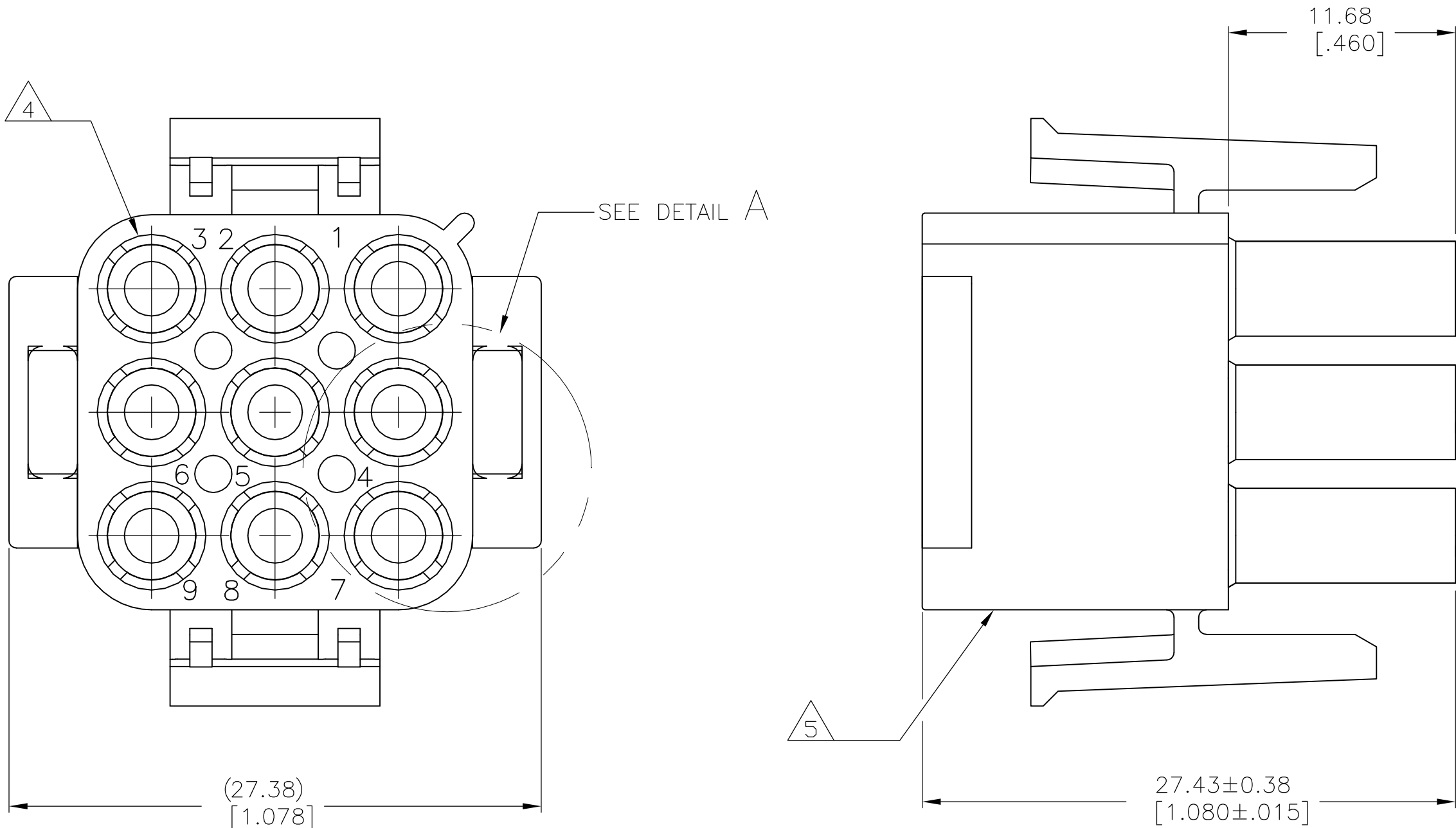
1. MATES WITH APPROPRIATE UNIVERSAL MATE-N-LOK™ CAP OR HEADER.
2. SMALL NICKS ARE PERMITTED ON THE CIRCUIT TOWERS WHICH COULD INCREASE THE INITIAL HOUSING MATING FORCE BY UP TO 4.4 NEWTONS [1.0 LBS]. NO INDIVIDUAL NICKED TOWER SHALL INCREASE THIS FORCE BY OVER 2.2 NEWTONS [.5 LBS].

△3 DIMENSION INDICATED IS AS MOLDED. ADDITIONAL GROWTH DUE TO SUBSEQUENT MOISTURE ABSORPTION MAY OCCUR.

△4 FOUR RIBS EQUALLY SPACED, NO SPECIFIC ORIENTATION. OR SIX RIBS EQUALLY SPACED, NO SPECIFIC ORIENTATION, OPTIONAL.

△5 UNDERWRITERS RECOGNIZED COMPONENT LOGO AND CSA CERTIFICATION LOGO TO BE LOCATED ONCE EACH ON SIDE OF HOUSING.

△6 OBSOLETE PARTS: OBSOLETE CIS STREAMLINING PER D.RENAUD/D.SINISI

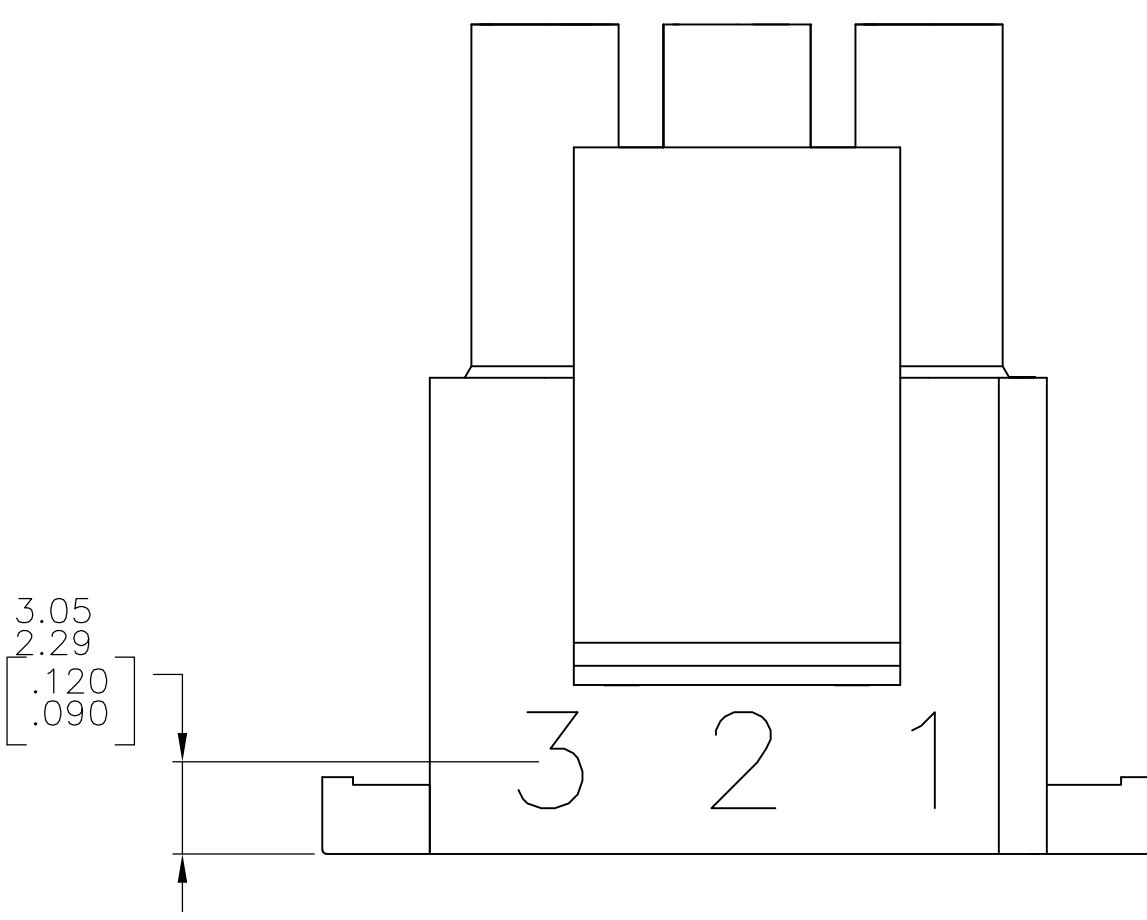


PARTIAL DETAIL A △4
OPTIONAL CONSTRUCTIONS

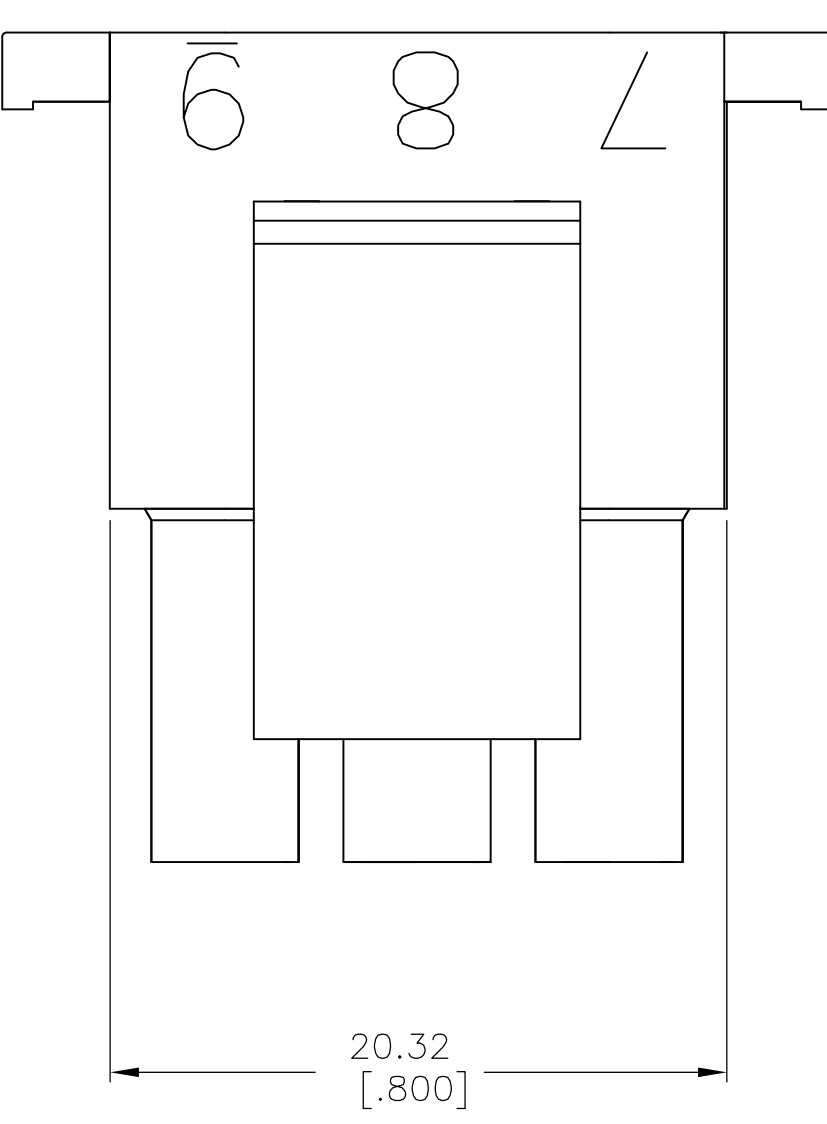
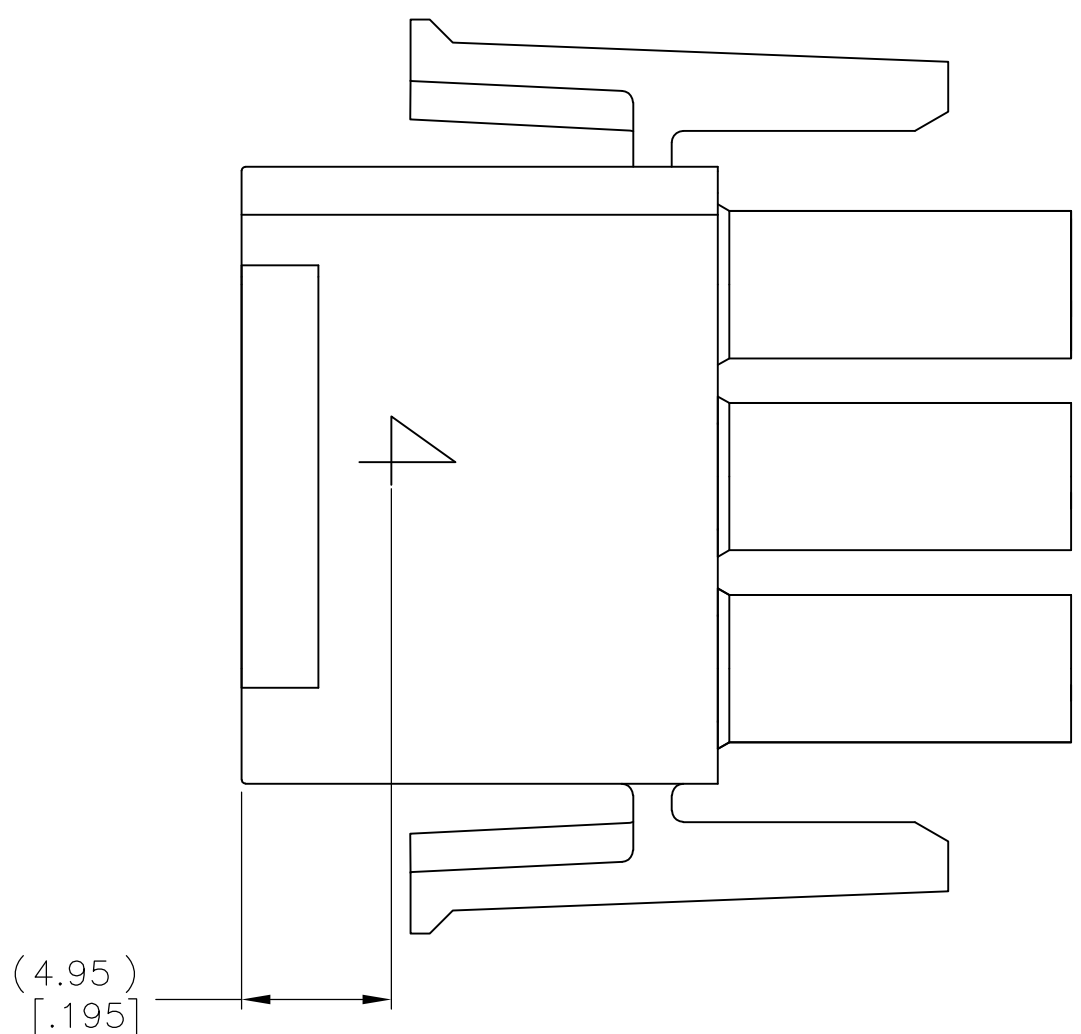
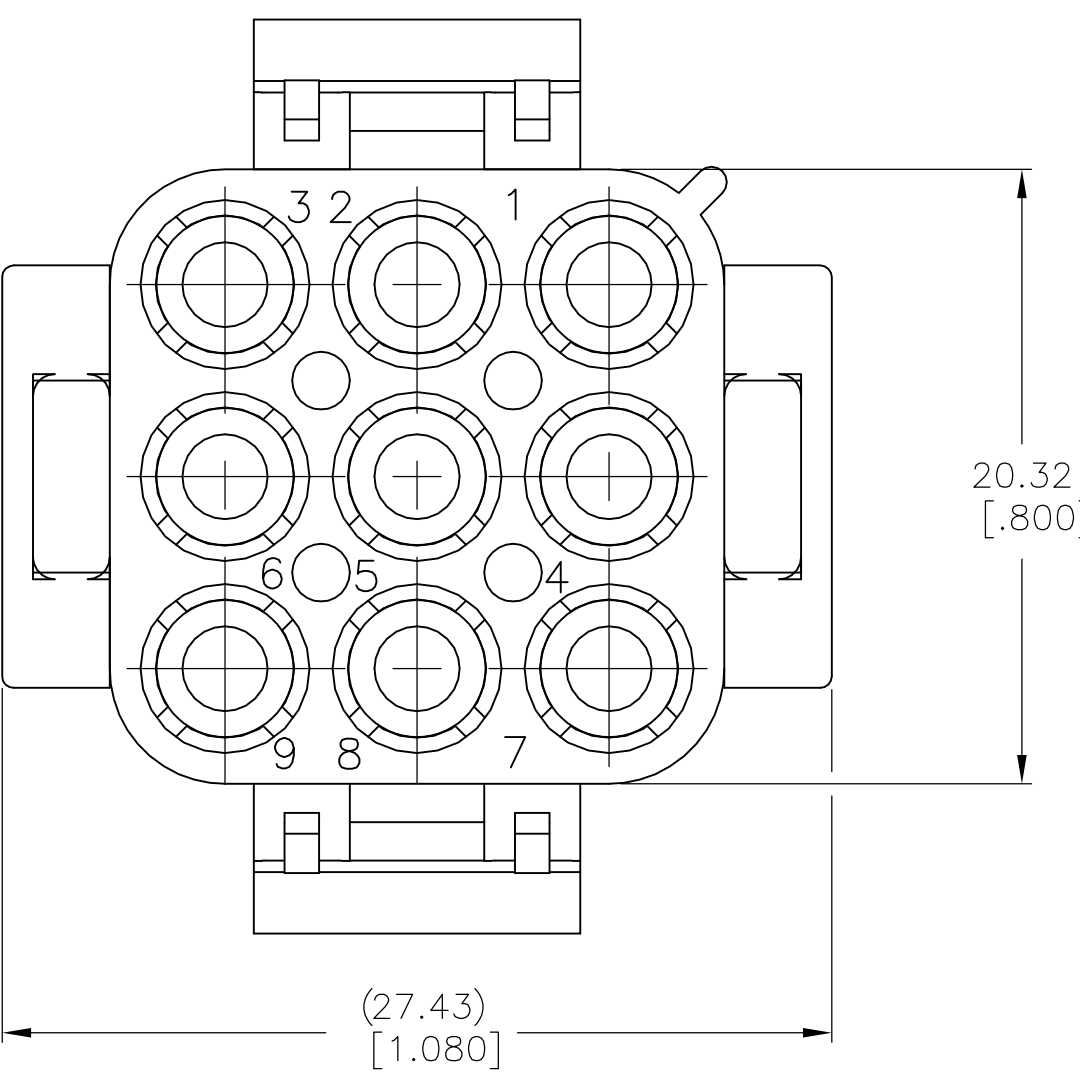
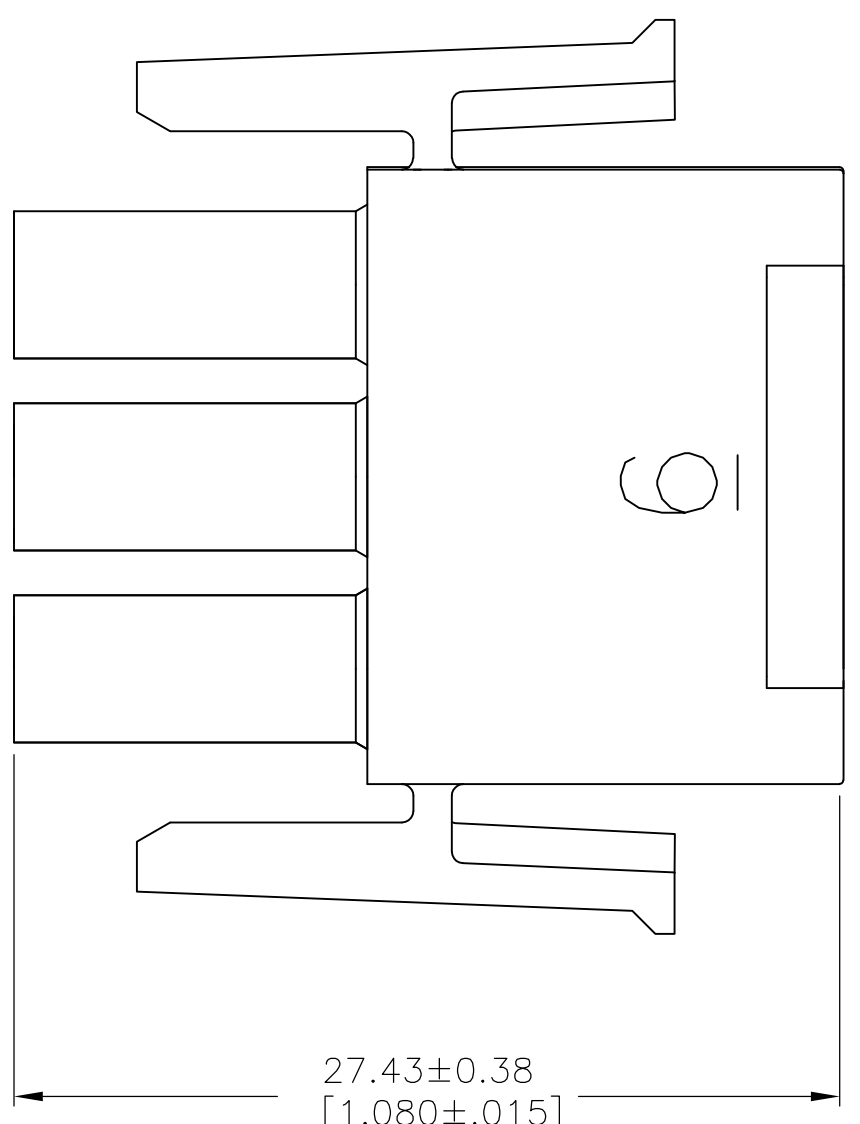
△6 SUPERCEDED BY 1-480706-0	△6 OBSOLETE	BLACK	1-480706-9
		GRAY	1-480706-8
		BLUE	1-480706-6
		GREEN	1-480706-5
		YELLOW	1-480706-4
		ORANGE	1-480706-3
		RED	1-480706-2
		BROWN	1-480706-1
		NATURAL	1-480706-0
		COLOR	PART NO.

THIS DRAWING IS A CONTROLLED DOCUMENT.		DWN K. WHITAKER	01SEP04	STE TE Connectivity	
		CHK S. RIDGILL	01SEP04		
DIMENSIONS: mm [INCHES]		APVD S. RIDGILL	01SEP04	NAME	
		PRODUCT SPEC		PLUG, 9 CIRCUIT, UNIVERSAL MATE-N-LOK™	
		APPLICATION SPEC		SIZE	
		WEIGHT		CAGE CODE	
				DRAWING NO	
				RESTRICTED TO	
MATERIAL NYLON, UL94V-2		FINISH -		A1 00779C-480706	
				CUSTOMER DRAWING	
				SCALE 4:1	
				SHEET 1 OF 2	
				REV AK3	





1. STAMP NUMBERS 3.18 [.125] HIGH AT WIRE END OF HOUSING (12 POINT DAVID TYPE).
2. CHARACTERS TO BE POSITIONED ON HOUSING TO BE READ FROM WIRE END ONLY.
3. VIOLET,BLACK,BROWN,AND BLUE COLORED BLOCKS TO BE STAMPED WITH WHITE CHARACTERS. ALL OTHER COLORED BLOCKS TO BE STAMPED WITH BLACK CHARACTERS.



METRIC

NATURAL	2-480706-0
COLOR	PART NUMBER

STE TE Connectivity

THIS DRAWING IS A CONTROLLED DOCUMENT.	DWN K. WHITAKER CHK S. RIDGILL APPD S. RIDGILL	01SEP2004 01SEP2004 01SEP2004	NAME
DIMENSIONS: mm [INCHES]	TOLERANCES UNLESS OTHERWISE SPECIFIED:	PRODUCT SPEC	PLUG, 9 CIRCUIT, UNIVERSAL MATE-N-LOK
	0 PLC ± - 1 PLC ± - 2 PLC ± 0.13 [.005] 3 PLC ± - 4 PLC ± - ANGLES ± 0°30'	APPLICATION SPEC	SIZE A1
MATERIAL -	FINISH -	WEIGHT -	CAGE CODE 00779
CUSTOMER DRAWING			SCALE 4:1
SHEET 2			OF 2
REV AK3			RESTRICTED TO -