



Chipsmall Limited consists of a professional team with an average of over 10 year of expertise in the distribution of electronic components. Based in Hongkong, we have already established firm and mutual-benefit business relationships with customers from,Europe,America and south Asia,supplying obsolete and hard-to-find components to meet their specific needs.

With the principle of “Quality Parts,Customers Priority,Honest Operation,and Considerate Service”,our business mainly focus on the distribution of electronic components. Line cards we deal with include Microchip,ALPS,ROHM,Xilinx,Pulse,ON,Everlight and Freescale. Main products comprise IC,Modules,Potentiometer,IC Socket,Relay,Connector.Our parts cover such applications as commercial,industrial, and automotives areas.

We are looking forward to setting up business relationship with you and hope to provide you with the best service and solution. Let us make a better world for our industry!



Contact us

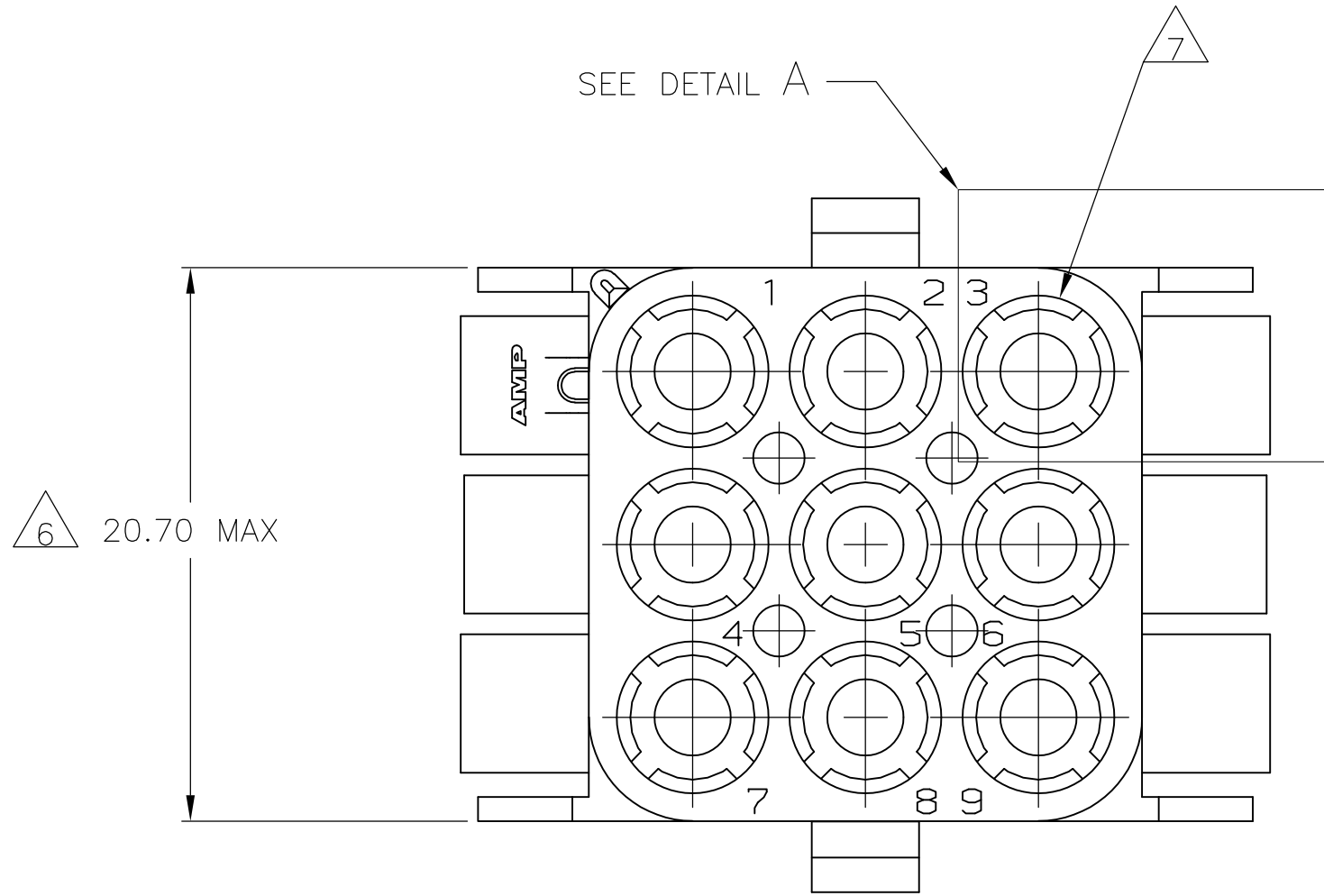
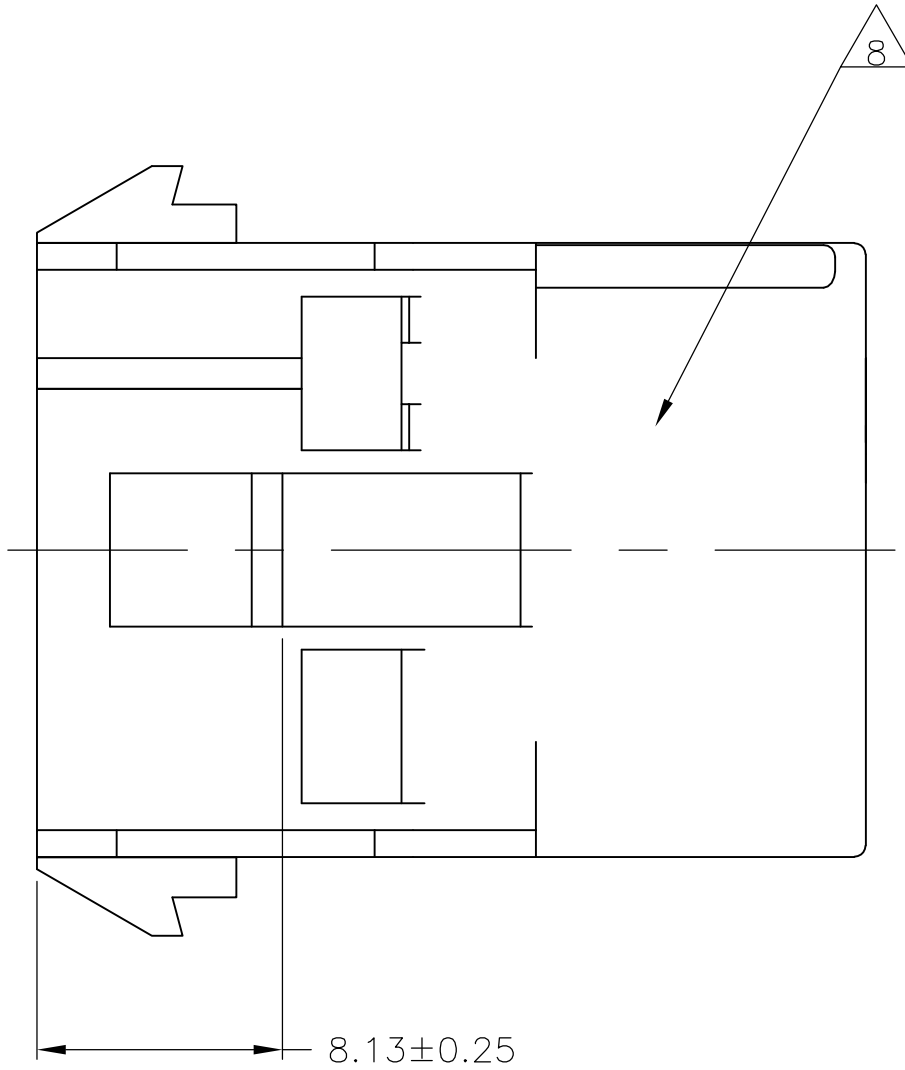
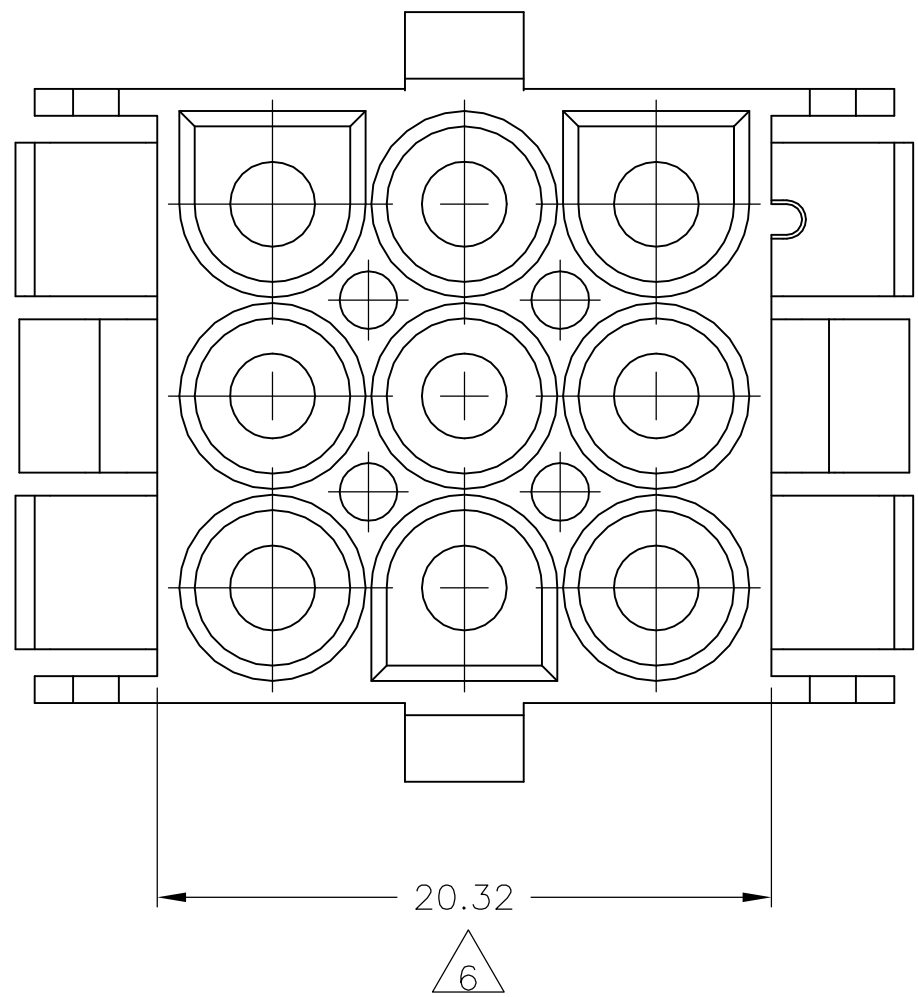
Tel: +86-755-8981 8866 Fax: +86-755-8427 6832

Email & Skype: info@chipsmall.com Web: www.chipsmall.com

Address: A1208, Overseas Decoration Building, #122 Zhenhua RD., Futian, Shenzhen, China



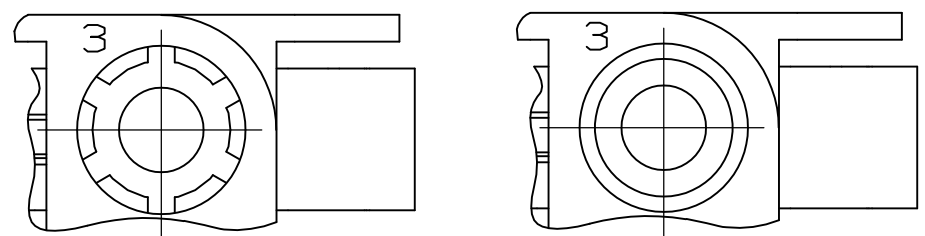
D



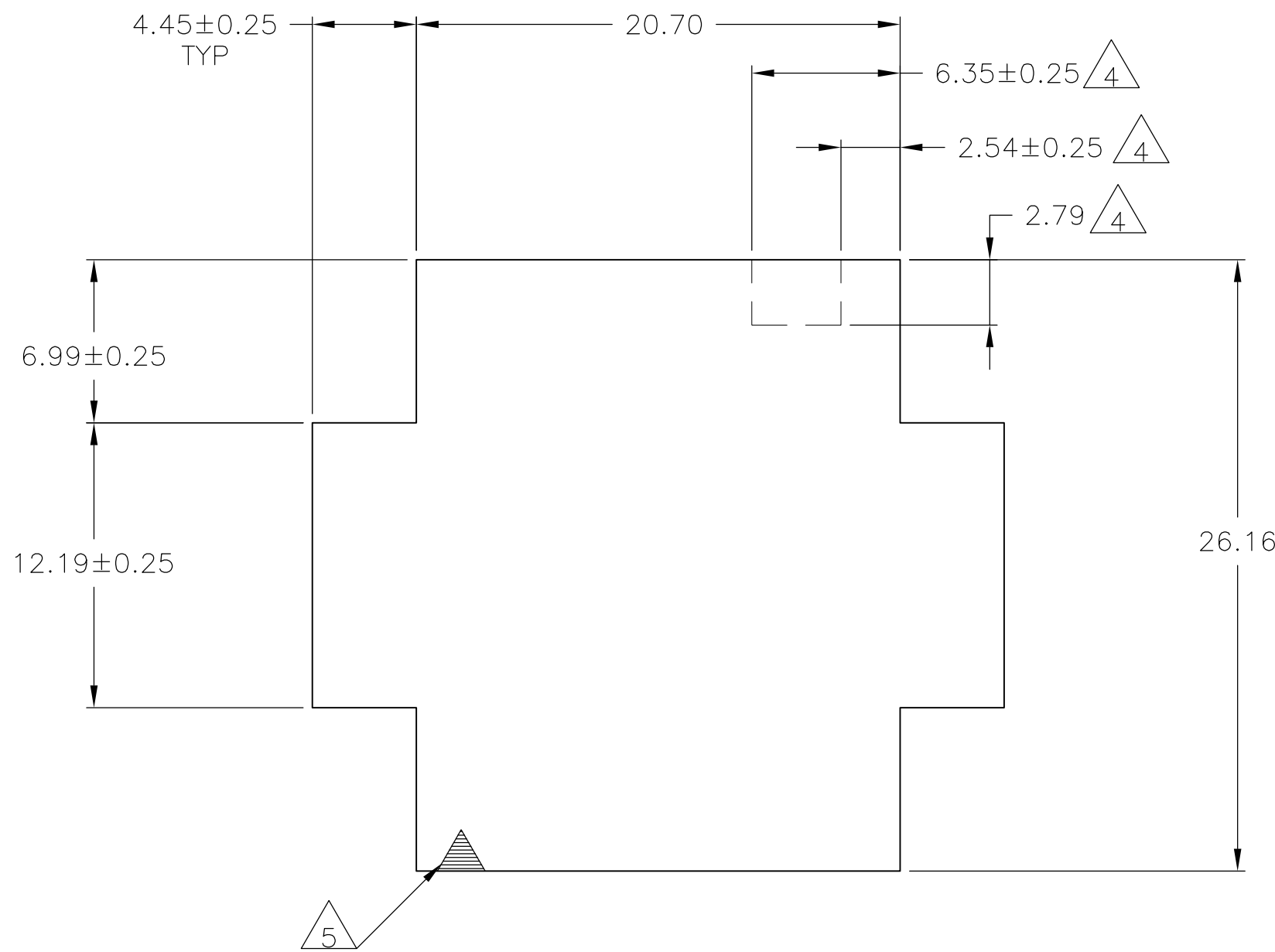
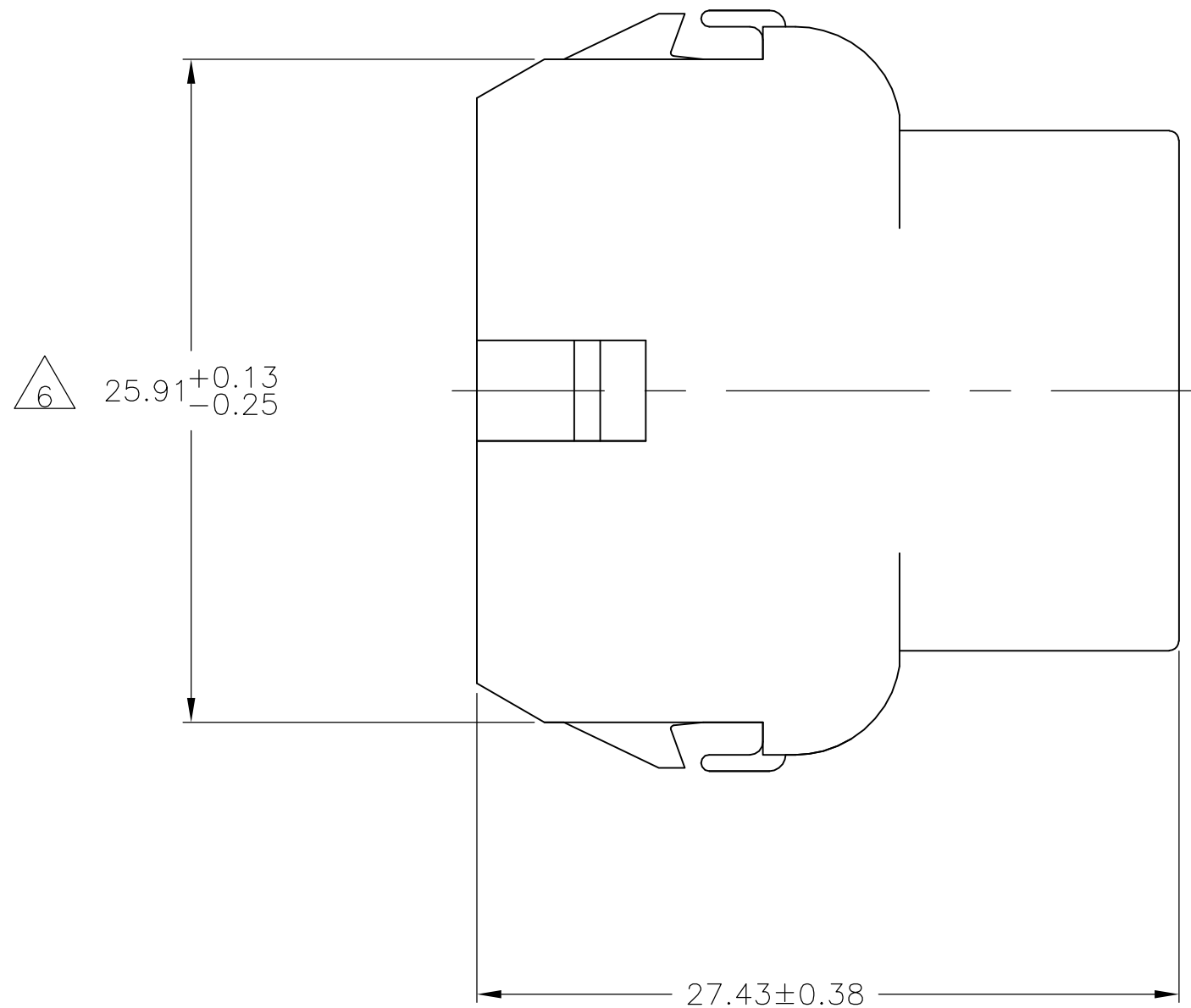
LOC		DIST		REVISIONS					
CM	00	P	LTR	DESCRIPTION			DATE	DWN	APVD
			AK2	REVISED PER ECO-11-004587			11MAR11	RK	HMR

1. MATES WITH APPROPRIATE UNIVERSAL MATE-N-LOK™ PLUG.
2. RECOMMENDED PANEL THICKNESS 0.76 - 2.29.
3. PANEL MUST BE PUNCHED SO THAT THE HOUSING ENTERS THE PANEL IN THE SAME DIRECTION AS THE PUNCH.
4. OPTIONAL FOR KEYING HOUSING IN PANEL.
5. CIRCUIT NUMBER 1 LOCATION.
6. DIMENSION REPRESENTS POTENTIAL MAXIMUM GROWTH DUE TO MOISTURE ABSORPTION.
7. FOUR RIBS EQUALLY SPACED, NO SPECIFIC ORIENTATION. NO RIBS OR SIX RIBS EQUALLY SPACED, NO SPECIFIC ORIENTATION, OPTIONAL.
8. UNDERWRITERS RECOGNIZED COMPONENT LOGO AND CSA CERTIFICATION LOGO TO BE LOCATED ONCE EACH ON SIDE OF HOUSING.
9. OBSOLETE PARTS: OBSOLETE CIS STREAMLINING PER D.RENAUD/D.SINISI

C

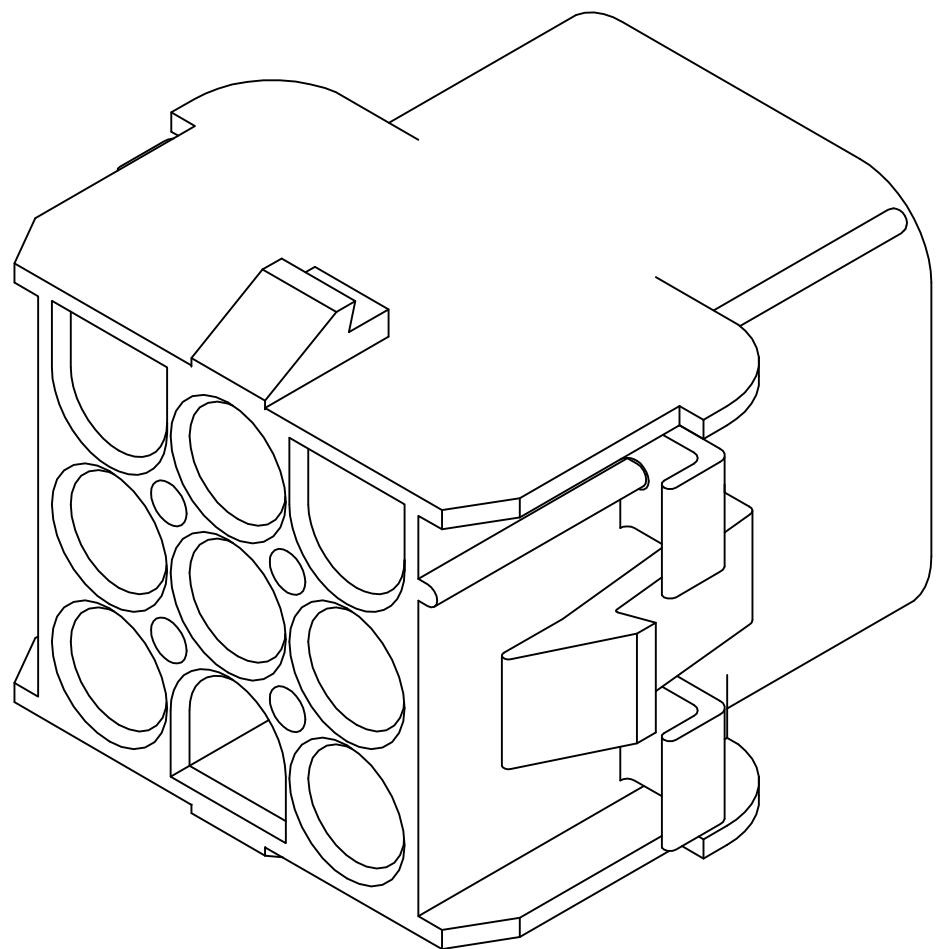


DETAIL A
OPTIONAL CONSTRUCTIONS



RECOMMENDED PANEL CUT OUT

B





3-DIMENSIONAL MODEL
NTS

6.35	.250	—	—
4.45	.175	27.43	1.080
2.79	.110	26.43	1.041
2.54	.100	25.91	1.020
2.29	.090	20.70	.815
0.76	.030	20.32	.800
0.38	.015	12.19	.480
0.25	.010	8.13	.320
0.13	.005	6.99	.275
MM	IN	MM	IN
CONVERSION TABLE			

METRIC

9	OBSOLETE	BLACK	1-480707-9
		GRAY	1-480707-8
9	SUPERSEDED BY 1-480707-0	BLUE	1-480707-6
		GREEN	1-480707-5
9	OBSOLETE	YELLOW	1-480707-4
		ORANGE	1-480707-3
9	OBSOLETE	RED	1-480707-2
		BROWN	1-480707-1
9	OBSOLETE	NATURAL	1-480707-0
		COLOR	PART NO

THIS DRAWING IS A CONTROLLED DOCUMENT.		DWN K. WHITAKER 29JUL04	 TE Connectivity	
DIMENSIONS: mm		CHK S. RIDGILL 29JUL04	NAME	
TOLERANCES UNLESS OTHERWISE SPECIFIED:		APVD S. RIDGILL 29JUL04	CAP. 9 CIRCUIT, UNIVERSAL MATE-N-LOK(TM)	
		PRODUCT SPEC		RESTRICTED TO
0. PLC ± -		APPLICATION SPEC		
1. PLC ± -		WEIGHT		
2. PLC ± 0.13		CUSTOMER DRAWING		
3. PLC ± -		SCALE 4:1		
4. PLC ± -		SHEET 1 OF 2		
ANGLES ± 0.30°		REV AK2		
FINISH -				
MATERIAL NYLON, UL94V-2		SIZE CAGE CODE DRAWING NO A1 00779 C480707		

D

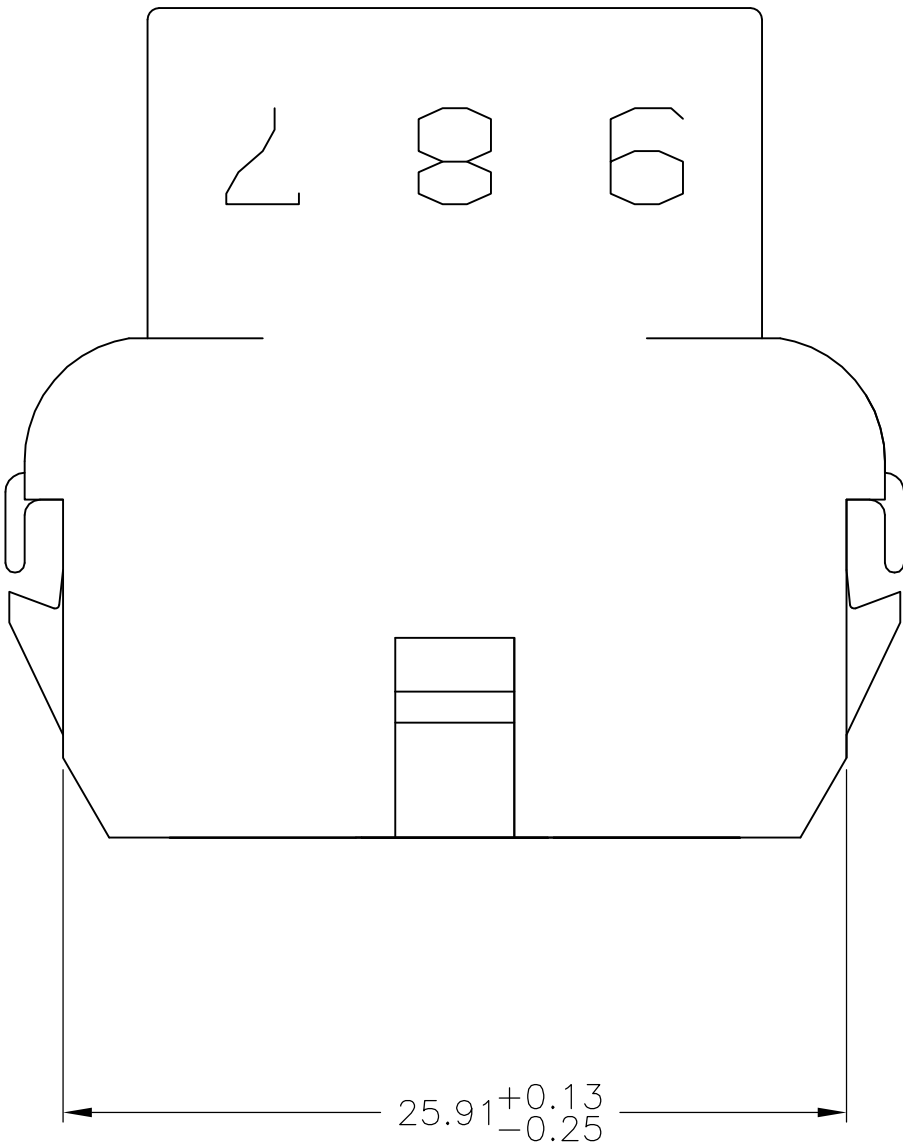
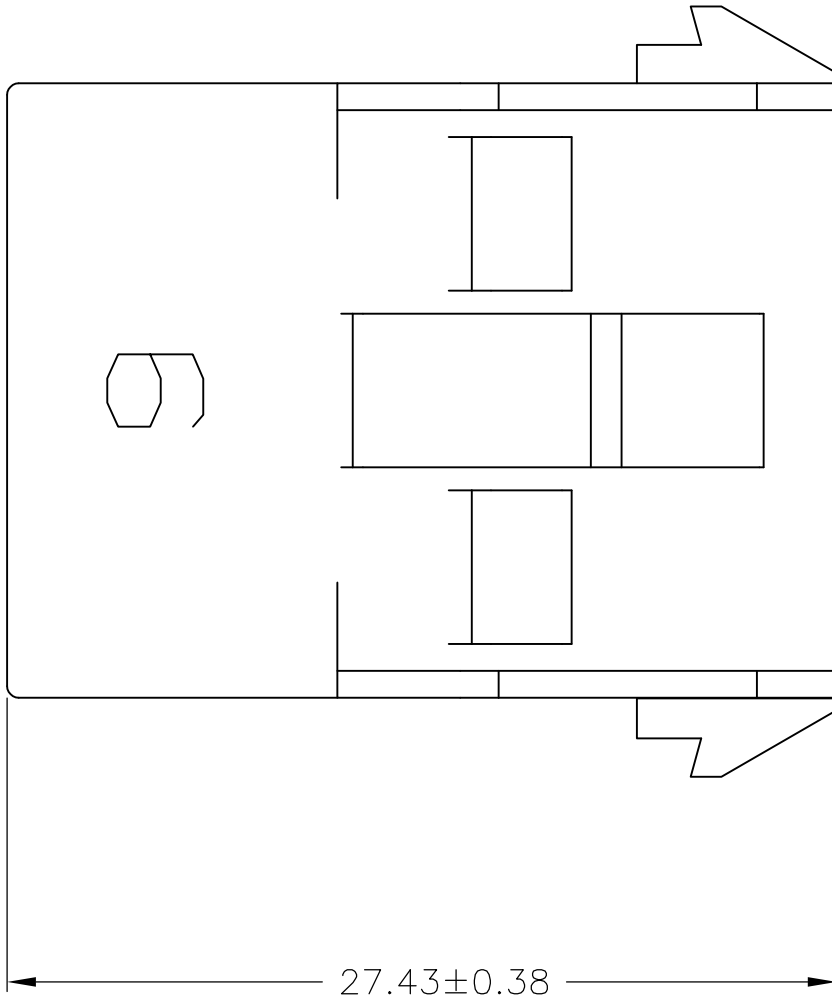
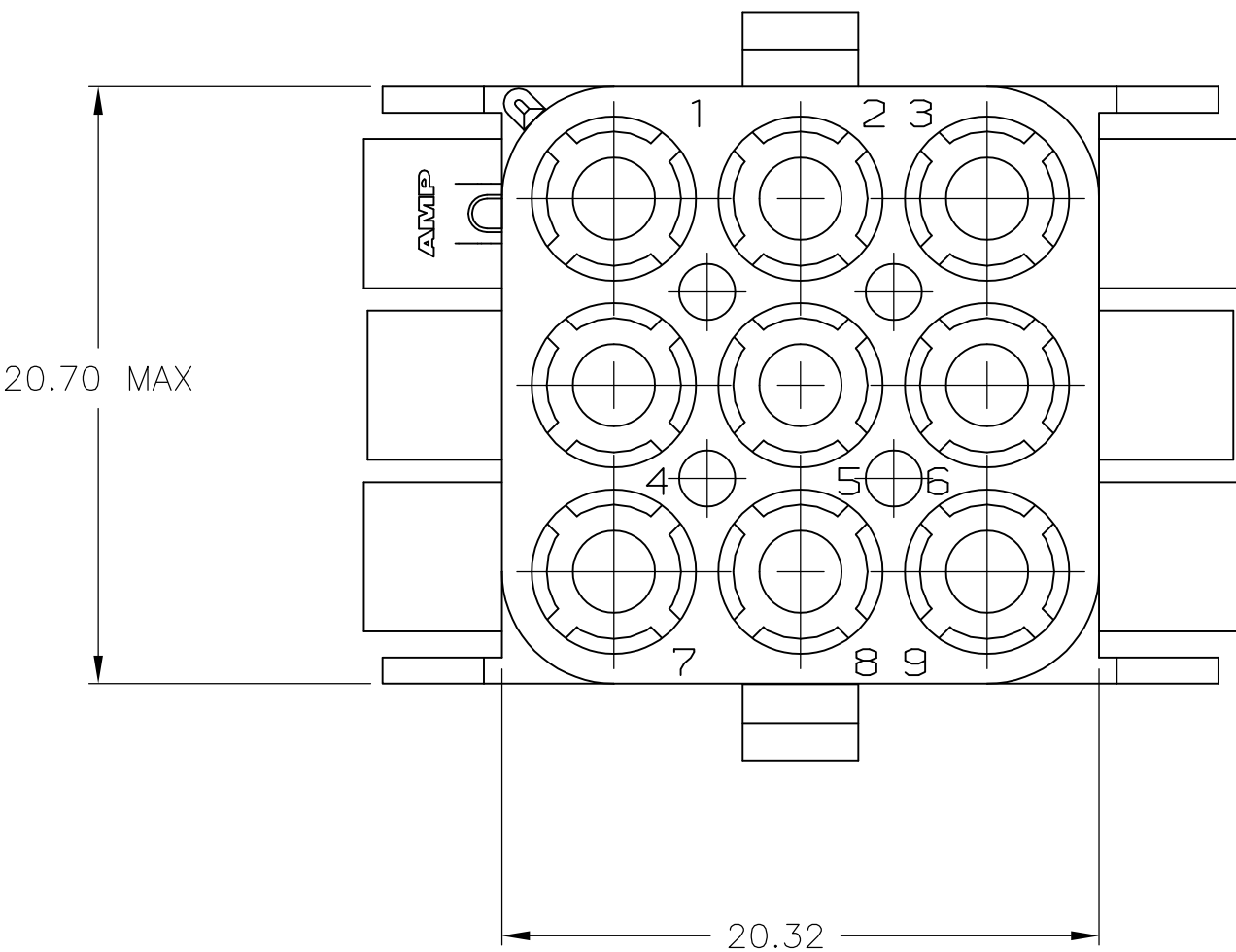
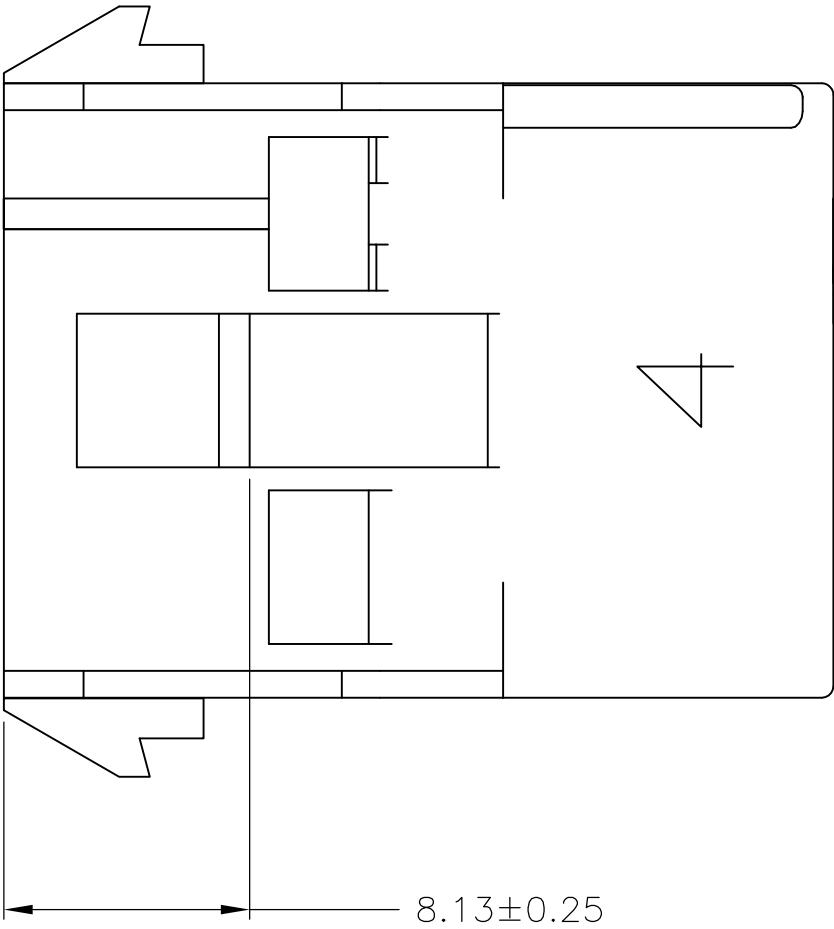
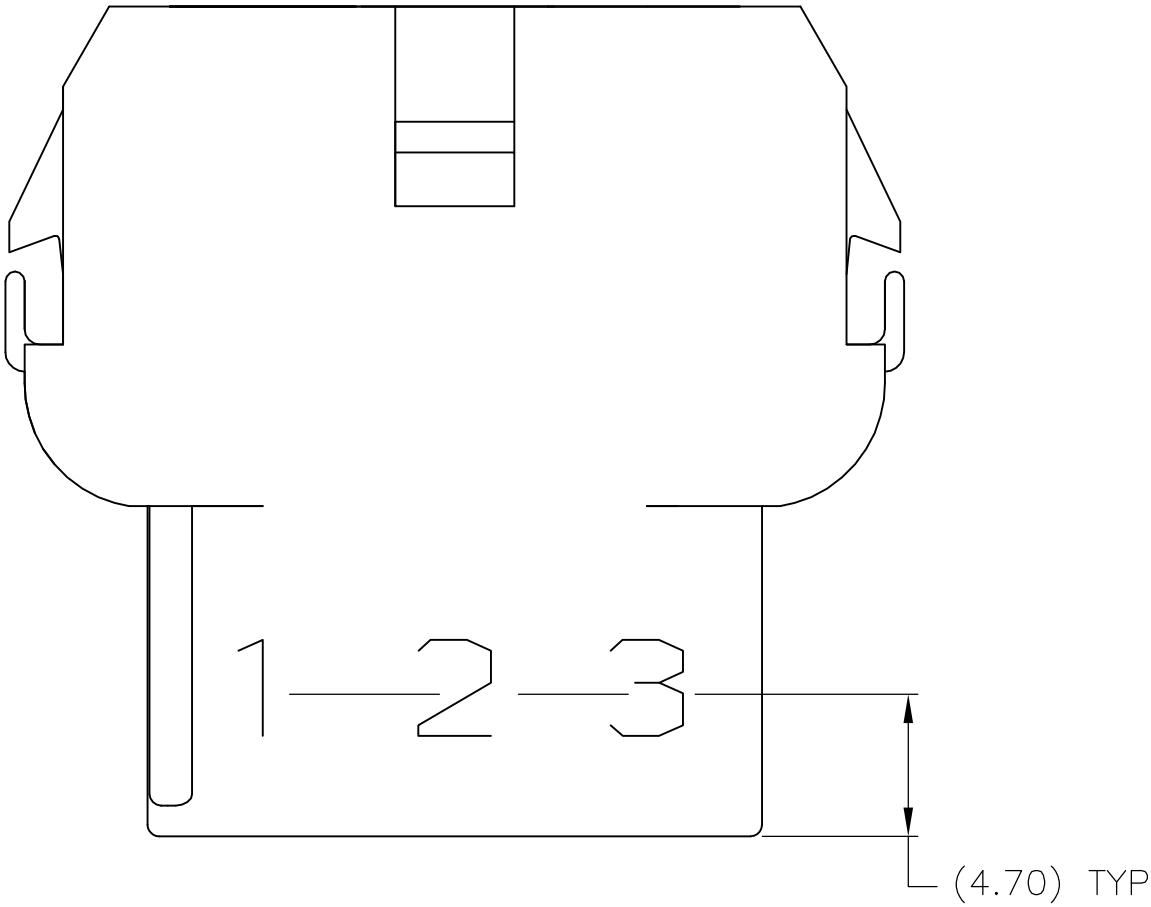
C

B

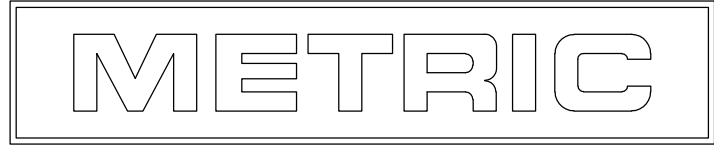
A



LOC	DIST	REVISIONS				
CM	00	REV	LTR	DESCRIPTION	DATE	DWN
		—		SEE SHEET 1	—	—

1. STAMP NUMBERS 3.18 HIGH AT WIRE END OF HOUSING (12 POINT DAVID TYPE);CLARIFICATION MARKS UNDER THE 6 & 9.
2. CHARACTERS TO BE STAMPED ON HOUSING IN A MANNER AS TO BE READ FROM WIRE END ONLY.
3. VIOLET,BLACK,BROWN,AND BLUE COLORED BLOCKS TO BE STAMPED WITH WHITE CHARACTERS. ALL OTHER COLORED BLOCKS TO BE STAMPED WITH BLACK CHARACTERS.



5.08	.200	—	—
4.70	.185	27.43	1.080
3.18	.125	25.91	1.020
0.38	.015	20.70	.815
0.25	.010	20.32	.800
0.13	.005	8.13	.320
MM	IN	MM	IN
CONVERSION TABLE			



THIS DRAWING IS A CONTROLLED DOCUMENT.		DWN K. WHITAKER	29JUL04	 TE Connectivity	
		CHK S. RIDGILL	29JUL04		
		APVD S. RIDGILL	29JUL04	NAME	
DIMENSIONS:		TOLERANCES UNLESS OTHERWISE SPECIFIED:		CAP, 9 CIRCUIT, UNIVERSAL MATE-N-LOK(TM)	
mm				SIZE	
		0.001		CAGE CODE	
		1.000		DRAWING NO	
		0.010		APPLIC	
		0.013		WEIGHT	
		0.015		CUSTOMER DRAWING	
		0.018		SCALE	
		0.020		SHEET	
		0.025		REV	
		0.030			
		0.035			
		0.040			
		0.045			
		0.050			
		0.055			
		0.060			
		0.065			
		0.070			
		0.075			
		0.080			
		0.085			
		0.090			
		0.095			
		0.100			
		0.105			
		0.110			
		0.115			
		0.120			
		0.125			
		0.130			
		0.135			
		0.140			
		0.145			
		0.150			
		0.155			
		0.160			
		0.165			
		0.170			
		0.175			
		0.180			
		0.185			
		0.190			
		0.195			
		0.200			
		0.205			
		0.210			
		0.215			
		0.220			
		0.225			
		0.230			
		0.235			
		0.240			
		0.245			
		0.250			
		0.255			
		0.260			
		0.265			
		0.270			
		0.275			
		0.280			
		0.285			
		0.290			
		0.295			
		0.300			
		0.305			
		0.310			
		0.315			
		0.320			
		0.325			
		0.330			
		0.335			
		0.340			
		0.345			
		0.350			
		0.355			
		0.360			
		0.365			
		0.370			
		0.375			
		0.380			
		0.385			
		0.390			
		0.395			
		0.400			
		0.405			
		0.410			
		0.415			
		0.420			
		0.425			
		0.430			
		0.435			
		0.440			
		0.445			
		0.450			
		0.455			
		0.460			
		0.465			
		0.470			
		0.475			
		0.480			
		0.485			
		0.490			
		0.495			
		0.500			
		0.505			
		0.510			
		0.515			
		0.520			
		0.525			
		0.530			
		0.535			
		0.540			
		0.545			
		0.550			
		0.555			
		0.560			
		0.565			
		0.570			
		0.575			
		0.580			
		0.585			
		0.590			
		0.595			
		0.600			
		0.605			
		0.610			
		0.615			
		0.620			
		0.625			
		0.630			
		0.635			
		0.640			
		0.645			
		0.650			
		0.655			
		0.660			
		0.665			
		0.670			
		0.675			
		0.680			
		0.685			
		0.690			
		0.695			
		0.700			
		0.705			
		0.710			
		0.715			
		0.720			
		0.725			
		0.730			
		0.735			
		0.740			
		0.745			
		0.750			
		0.755			
		0.760			
		0.765			
		0.770			
		0.775			
		0.780			
		0.785			
		0.790			
		0.795			
		0.800			
		0.805			
		0.810			
		0.815			
		0.820			
		0.825			
		0.830			
		0.835			
		0.840			
		0.845			
		0.850			
		0.855			
		0.860			
		0.865			
		0.870			
		0.875			
		0.880			
		0.885			
		0.890			
		0.895			
		0.900			
		0.905			
		0.910			
		0.915			
		0.920			
		0.925			
		0.930			
		0.935			
		0.940			
		0.945			
		0.950			
		0.955			
		0.960			
		0.965			
		0.970			
		0.975			
		0.980			
		0.985			
		0.990			
		0.995			
		1.000			
		1.005			
		1.010			
		1.015			
		1.020			
		1.025			
		1.030			
		1.035			
		1.040			
		1.045			
		1.050			
		1.055			
		1.060			
		1.065			
		1.070			
		1.075			
		1.080			
		1.085			
		1.090			
		1.095			
		1.100			
		1.105			
		1.110			
		1.115			
		1.120			
		1.125			
		1.130			
		1.135			
		1.140			
		1.145			
		1.150			
		1.155			
		1.160			
		1.165			
		1.170			
		1.175			
		1.180			
		1.185			
		1.190			
		1.195			
		1.200			
		1.205			
		1.210			
		1.215			
		1.220			
		1.225			
		1.230			
		1.235			
		1.240			
		1.245			
		1.250			
		1.255			
		1.260			
		1.265			
		1.270			
		1.275			
		1.280			
		1.285			
		1.290			
		1.295			
		1.300			
		1.305			
		1.310			
		1.315			
		1.320			
		1.325			
		1.330			
		1.335			
		1.340			
		1.345			
		1.350			
		1.355			
		1.360			
		1.365			
		1.370			
		1.375			
		1.380			
		1.385			
		1.390			
		1.395			
		1.400			
		1.405			
		1.410			
		1.415			
		1.420			
		1.425			
		1.430			
		1.435			
		1.440			
		1.445			
		1.450			
		1.455			
		1.460			
		1.465			
		1.470			
		1.475			
		1.480			
		1.485			
		1.490			
		1.495			
		1.500			
		1.505			
		1.510			
		1.515			
		1.520			
		1.525			
		1.530			
		1.535			
		1.540			
		1.545			
		1.550			
		1.555			
		1.560			
		1.565			
		1.570			
		1.575			
		1.580			
		1.585			
		1.590			
		1.595			
		1.600			
		1.605			
		1.610			
		1.615			
		1.620			
		1.625			
		1.630			
		1.635			
		1.640			
		1.645			
		1.650			
		1.655			
		1.660			
		1.665			
		1.670			
		1.675			
		1.680			
		1.685			
		1.690			
		1.695			
		1.700			
		1.705			
		1.710			
		1.715			
		1.720			
		1.725			
		1.730			
		1.735			
		1.740			
		1.745			
		1.750			
		1.755			
		1.760			
		1.765			
		1.770			
		1.775			
		1.780			
		1.785			
		1.790			
		1.795			
		1.800			
		1.805			
		1.810			
		1.815			
		1.820			
		1.825			
		1.830			
		1.835			
		1.840			
		1.845			
		1.850			
		1.855			
		1.860			
		1.865			
		1.870			
		1.875			
		1.880			
		1.885			
		1.890			
		1.895			
		1.900			
		1.905			
		1.910			
		1.915			
		1.920			
		1.925			
		1.930			
		1.935</			