



Chipsmall Limited consists of a professional team with an average of over 10 year of expertise in the distribution of electronic components. Based in Hongkong, we have already established firm and mutual-benefit business relationships with customers from,Europe,America and south Asia,supplying obsolete and hard-to-find components to meet their specific needs.

With the principle of “Quality Parts,Customers Priority,Honest Operation,and Considerate Service”,our business mainly focus on the distribution of electronic components. Line cards we deal with include Microchip,ALPS,ROHM,Xilinx,Pulse,ON,Everlight and Freescale. Main products comprise IC,Modules,Potentiometer,IC Socket,Relay,Connector.Our parts cover such applications as commercial,industrial, and automotives areas.

We are looking forward to setting up business relationship with you and hope to provide you with the best service and solution. Let us make a better world for our industry!



## Contact us

Tel: +86-755-8981 8866 Fax: +86-755-8427 6832

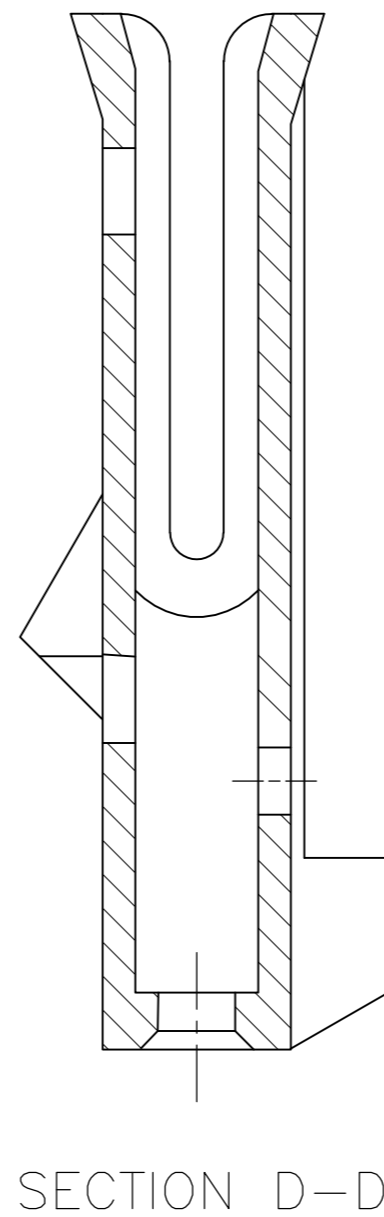
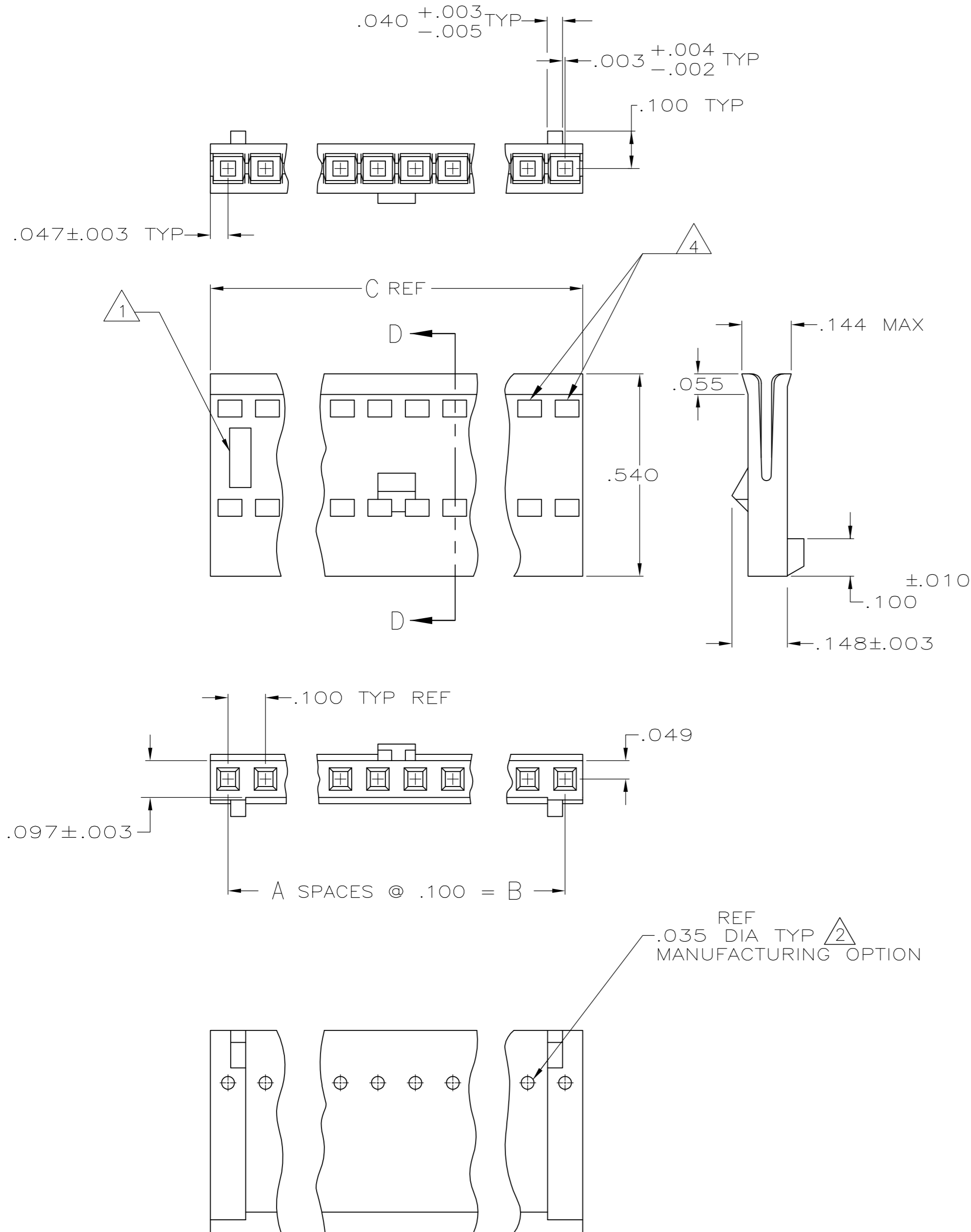
Email & Skype: info@chipsmall.com Web: www.chipsmall.com

Address: A1208, Overseas Decoration Building, #122 Zhenhua RD., Futian, Shenzhen, China



THIS DRAWING IS UNPUBLISHED. RELEASED FOR PUBLICATION  
 © COPYRIGHT - By - ALL RIGHTS RESERVED.

| LOC | DIST | REVISIONS |     |                           |           |     |      |
|-----|------|-----------|-----|---------------------------|-----------|-----|------|
| GP  | 00   | P         | LTR | DESCRIPTION               | DATE      | DWN | APVD |
|     |      | S         |     | REVISED PER ECO-11-017188 | 06DEC2011 | CJV | CWR  |



- $\Delta 1$  AMP TRADEMARK AND MOLD CAVITY IDENTIFICATION LOCATED AT EITHER END OF THE HOUSING IN APPROXIMATE AREA SHOWN.
- $\Delta 2$  THIS HOLE IS FOR MOLDING PURPOSES ONLY AND MAY BE FLASHED OVER.
- $\Delta 3$  OBSOLETE PARTS: OBSOLETE CIS STREAMLINING PER D.RENAUD/D.SINISI.
- $\Delta 4$  WINDOWS MAY OR MAY NOT BE PRESENT ON THIS END OF THE HOUSING.

|                     |       |       |    |             |            |
|---------------------|-------|-------|----|-------------|------------|
| OBSOLETE            | 2.494 | 2.400 | 24 | 25          | 2-487769-3 |
|                     | 2.394 | 2.300 | 23 | 24          | 2-487769-2 |
| OBSOLETE            | 2.294 | 2.200 | 22 | 23          | 2-487769-1 |
|                     | 2.194 | 2.100 | 21 | 22          | 2-487769-0 |
| OBSOLETE            | 2.094 | 2.000 | 20 | 21          | 1-487769-9 |
|                     | 1.994 | 1.900 | 19 | 20          | 1-487769-8 |
| $\Delta 3$ OBSOLETE | 1.894 | 1.800 | 18 | 19          | 1-487769-7 |
| OBSOLETE            | 1.794 | 1.700 | 17 | 18          | 1-487769-6 |
| OBSOLETE            | 1.694 | 1.600 | 16 | 17          | 1-487769-5 |
|                     | 1.594 | 1.500 | 15 | 16          | 1-487769-4 |
|                     | 1.494 | 1.400 | 14 | 15          | 1-487769-3 |
|                     | 1.394 | 1.300 | 13 | 14          | 1-487769-2 |
|                     | 1.294 | 1.200 | 12 | 13          | 1-487769-1 |
|                     | 1.194 | 1.100 | 11 | 12          | 1-487769-0 |
|                     | 1.094 | 1.000 | 10 | 11          | 487769-9   |
|                     | .994  | .900  | 9  | 10          | 487769-8   |
|                     | .894  | .800  | 8  | 9           | 487769-7   |
|                     | .794  | .700  | 7  | 8           | 487769-6   |
|                     | .694  | .600  | 6  | 7           | 487769-5   |
|                     | .594  | .500  | 5  | 6           | 487769-4   |
|                     | .494  | .400  | 4  | 5           | 487769-3   |
|                     | .394  | .300  | 3  | 4           | 487769-2   |
|                     | .294  | .200  | 2  | 3           | 487769-1   |
|                     | C     | B     | A  | NO OF POSNS | PART NO    |

THIS DRAWING IS A CONTROLLED DOCUMENT.

DWN: D. HUFFMAN 11-17-86  
 CHK: D.R. WORTHINGTON 2-16-87  
 APVD: -

DIMENSIONS: INCHES  
 TOLERANCES UNLESS OTHERWISE SPECIFIED:  
 0 PLC ± -  
 1 PLC ± -  
 2 PLC ± -  
 3 PLC ± .005  
 4 PLC ± -  
 ANGLES ± -  
 FINISH -

PRODUCT SPEC: 108-9024  
 APPLICATION SPEC: 114-16015  
 WEIGHT: -

MATERIAL: THERMOPLASTIC

TE Connectivity  
 HOUSING, RECEPTACLE, DETENT, POLARIZED, FFC

SIZE: A2  
 CAGE CODE: 00779  
 DRAWING NO: C=487769  
 RESTRICTED TO: -

CUSTOMER DRAWING  
 SCALE: 4:1  
 SHEET: 1 of 1  
 REV: S