



Chipsmall Limited consists of a professional team with an average of over 10 year of expertise in the distribution of electronic components. Based in Hongkong, we have already established firm and mutual-benefit business relationships with customers from,Europe,America and south Asia,supplying obsolete and hard-to-find components to meet their specific needs.

With the principle of “Quality Parts,Customers Priority,Honest Operation,and Considerate Service”,our business mainly focus on the distribution of electronic components. Line cards we deal with include Microchip,ALPS,ROHM,Xilinx,Pulse,ON,Everlight and Freescale. Main products comprise IC,Modules,Potentiometer,IC Socket,Relay,Connector.Our parts cover such applications as commercial,industrial, and automotives areas.

We are looking forward to setting up business relationship with you and hope to provide you with the best service and solution. Let us make a better world for our industry!



Contact us

Tel: +86-755-8981 8866 Fax: +86-755-8427 6832

Email & Skype: info@chipsmall.com Web: www.chipsmall.com

Address: A1208, Overseas Decoration Building, #122 Zhenhua RD., Futian, Shenzhen, China



CHAMP .050 Series I Connectors, Printed Circuit Board Connectors (Continued)

Receptacle Assembly for .025 [0.64] Ribbon Cable

Materials and Finish

Housing and Stuffer — 94V-0 rated LCP, black

Contacts — Phosphor bronze, plated .000030 [0.00076] min. gold in mating area, .000150 [0.00381] min. tin-lead on terminating end, all over .000050 [0.00127] min. nickel

Performance Specifications — Page 19

Mating Plug Connectors —

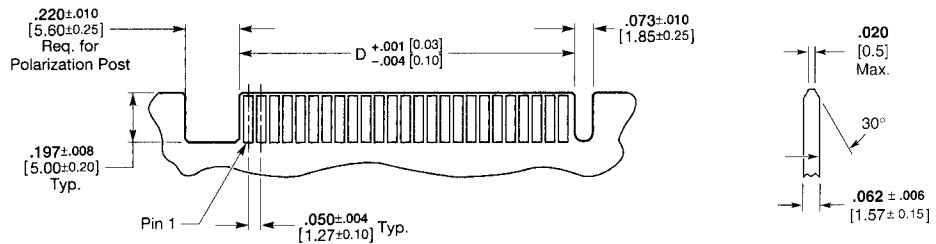
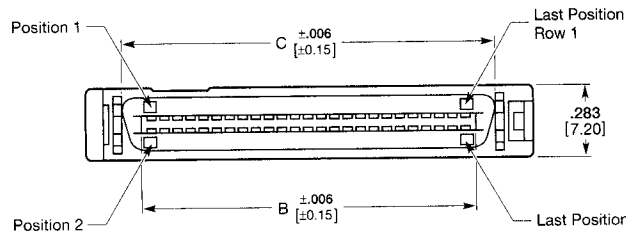
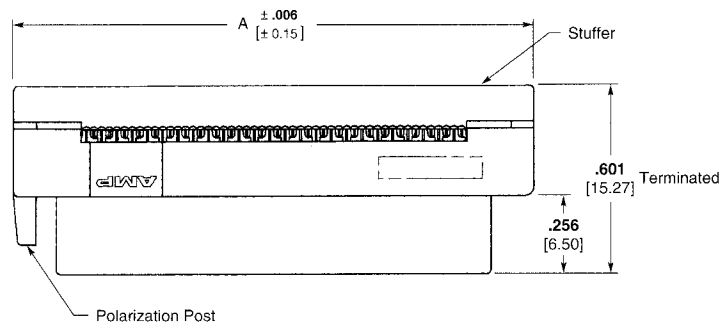
Right Angle — Page 20

Vertical — Page 22

Mating Configurations — Page 28

Packaging — Tubes

Application Tooling — Page 27



Recommended PC Board Layout for Card-edge Applications

No. of Positions	Dimensions				Part Numbers with Polarization Post
	A	B	C	D	
40	1.447 36.75	1.025 26.03	1.168 29.67	1.012 25.70	1-557089-6
50	1.697 43.10	1.275 32.38	1.418 36.02	1.267 32.18	1-557089-1
68	2.147 54.53	1.725 43.81	1.868 47.25	1.717 43.61	1-557089-2
80	2.447 62.15	2.025 51.43	2.168 55.07	2.017 51.23	1-557089-3
100	2.947 74.85	2.525 64.13	2.668 67.77	2.517 63.93	1-557089-5