



Chipsmall Limited consists of a professional team with an average of over 10 year of expertise in the distribution of electronic components. Based in Hongkong, we have already established firm and mutual-benefit business relationships with customers from,Europe,America and south Asia,supplying obsolete and hard-to-find components to meet their specific needs.

With the principle of “Quality Parts,Customers Priority,Honest Operation,and Considerate Service”,our business mainly focus on the distribution of electronic components. Line cards we deal with include Microchip,ALPS,ROHM,Xilinx,Pulse,ON,Everlight and Freescale. Main products comprise IC,Modules,Potentiometer,IC Socket,Relay,Connector.Our parts cover such applications as commercial,industrial, and automotives areas.

We are looking forward to setting up business relationship with you and hope to provide you with the best service and solution. Let us make a better world for our industry!



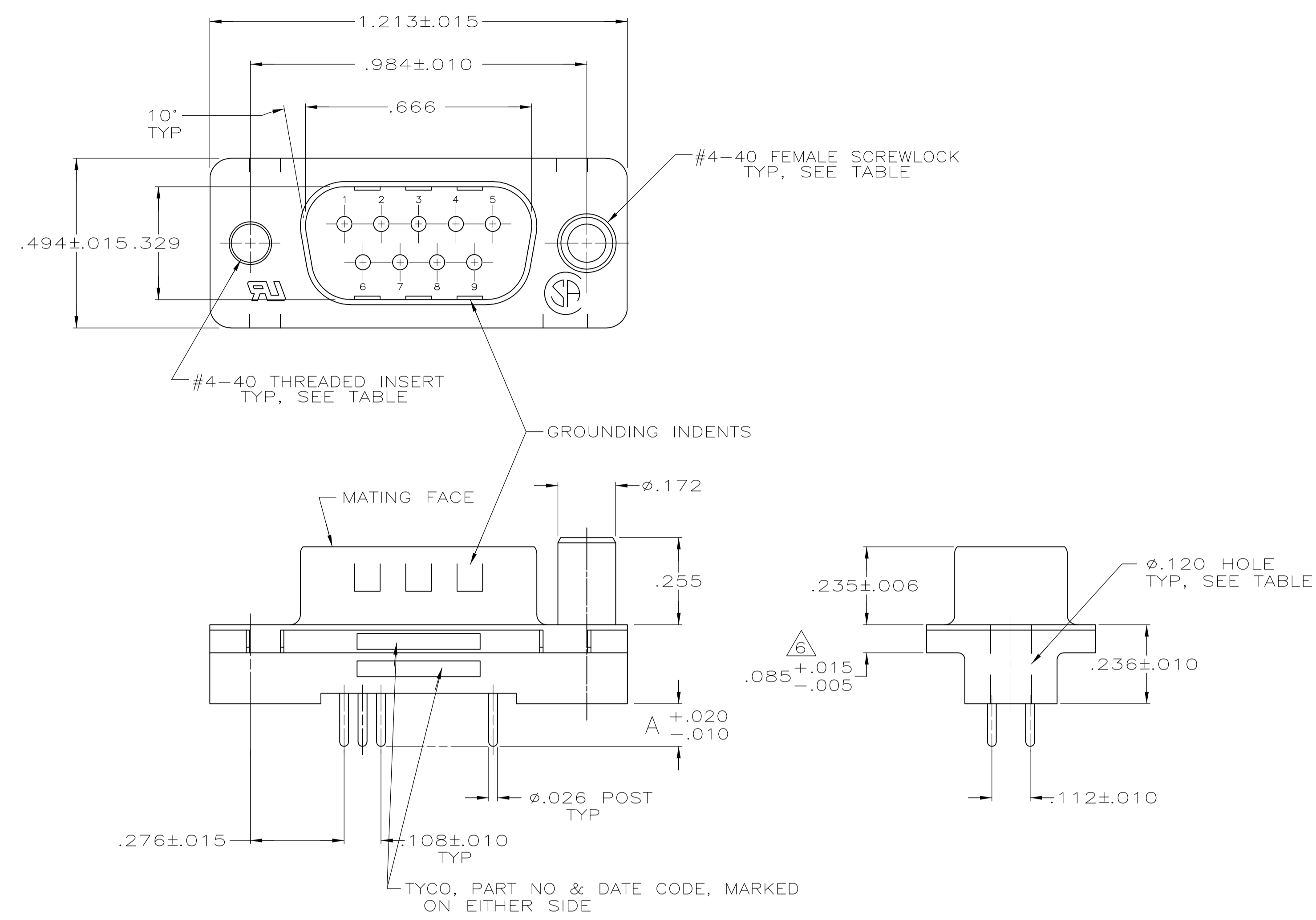
Contact us

Tel: +86-755-8981 8866 Fax: +86-755-8427 6832

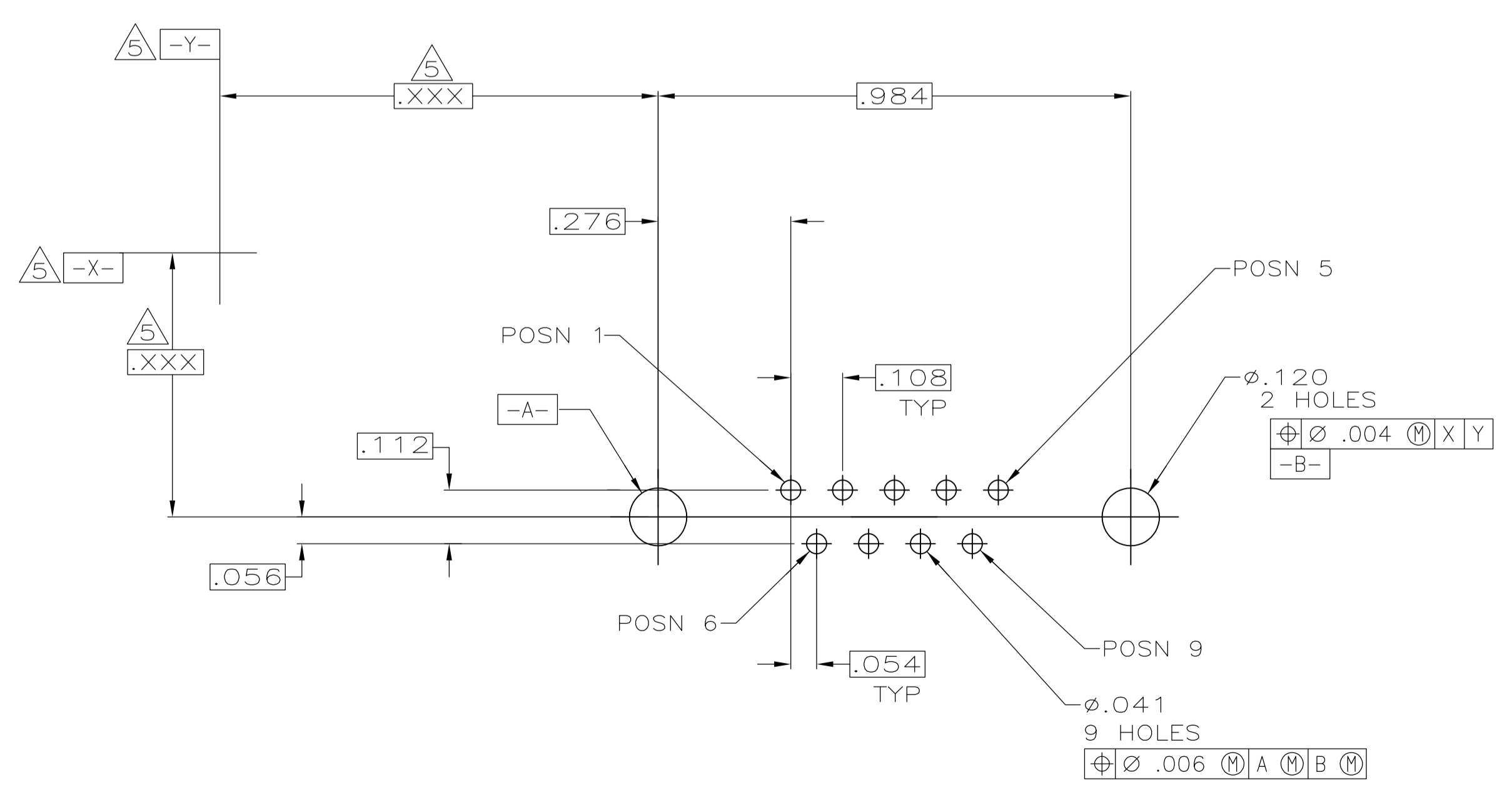
Email & Skype: info@chipsmall.com Web: www.chipsmall.com

Address: A1208, Overseas Decoration Building, #122 Zhenhua RD., Futian, Shenzhen, China





- ① HOUSING: FLAME RETARDANT 94V-0 RATED THERMOPLASTIC; COLOR: BLACK. SHELL: STEEL. CONTACTS: BRASS. SCREWLOCKS: ZINC. INSERTS: BRASS.
- ② SHELL: .000200 MIN TIN OVER .000100 MIN COPPER. CONTACTS: SEE TABLE. SCREWLOCKS: CLEAR CHROMATE. INSERTS: UNPLATED.
- ③ GOLD PLATED FOR A LENGTH OF .150 MIN FROM MATING END, GOLD FLASH IN MATED AREA, .000100 MIN TIN FOR A LENGTH OF DIMENSION A FROM OPPOSITE END, ALL OVER .000050 MIN NICKEL.
- ④ GOLD PLATED FOR A LENGTH OF .150 MIN FROM MATING END, .000030 MIN GOLD IN MATED AREA, .000100 MIN TIN FOR A LENGTH DIMENSION A FROM OPPOSITE END, ALL OVER .000050 MIN NICKEL. -OR- GOLD FLASH OVER PALLADIUM NICKEL PLATED FOR A LENGTH OF .150 MIN FROM MATING END, .000030 MIN PALLADIUM NICKEL IN MATED AREA, .000100 MIN TIN FOR A LENGTH OF DIMENSION A FROM OPPOSITE END, ALL OVER .000050 MIN NICKEL.
- ⑤ DATUMS AND BASIC DIMENSIONS ESTABLISHED BY CUSTOMER.
- ⑥ .110 MAX IN SHELL TAB CLINCH AREAS.



RECOMMENDED PC BOARD MOUNTING DIMENSIONS

FEMALE SCREWLOCKS	④	.170	1-5747871-6
	④	.125	1-5747871-4
THREADED INSERTS	③	.125	1-5747871-3
	④	.125	5747871-8
φ.120 HOLE	④	.170	5747871-4
	④	.125	5747871-2
HARDWARE	CONTACT FINISH	A	PART NO

**COPYRIGHT 2005
TE CONNECTIVITY CORP
ALL RIGHTS RESERVED**

THIS DRAWING IS A CONTROLLED DOCUMENT.

DIMENSIONS: INCHES	TOLERANCES UNLESS OTHERWISE SPECIFIED:	DIN B LATTUCA 28SEP05	APVD S. BOLASH 28SEP05	TE Connectivity	
0 PLC ± -	1 PLC ± -	NAME M. WALMSLEY 28SEP10	PRODUCT SPEC 108-40025	SIZE A1	RESTRICTED TO
2 PLC ± .005	3 PLC ± -	APPLICATION SPEC 114-40023	WEIGHT -	CAGE CODE 00779	DRAWING NO 5747871
4 PLC ± -	ANGLES ± °	CUSTOMER DRAWING	SCALE 1:1	SHEET 1 OF 1	REV B1