



Chipsmall Limited consists of a professional team with an average of over 10 year of expertise in the distribution of electronic components. Based in Hongkong, we have already established firm and mutual-benefit business relationships with customers from,Europe,America and south Asia,supplying obsolete and hard-to-find components to meet their specific needs.

With the principle of “Quality Parts,Customers Priority,Honest Operation,and Considerate Service”,our business mainly focus on the distribution of electronic components. Line cards we deal with include Microchip,ALPS,ROHM,Xilinx,Pulse,ON,Everlight and Freescale. Main products comprise IC,Modules,Potentiometer,IC Socket,Relay,Connector.Our parts cover such applications as commercial,industrial, and automotives areas.

We are looking forward to setting up business relationship with you and hope to provide you with the best service and solution. Let us make a better world for our industry!



Contact us

Tel: +86-755-8981 8866 Fax: +86-755-8427 6832

Email & Skype: info@chipsmall.com Web: www.chipsmall.com

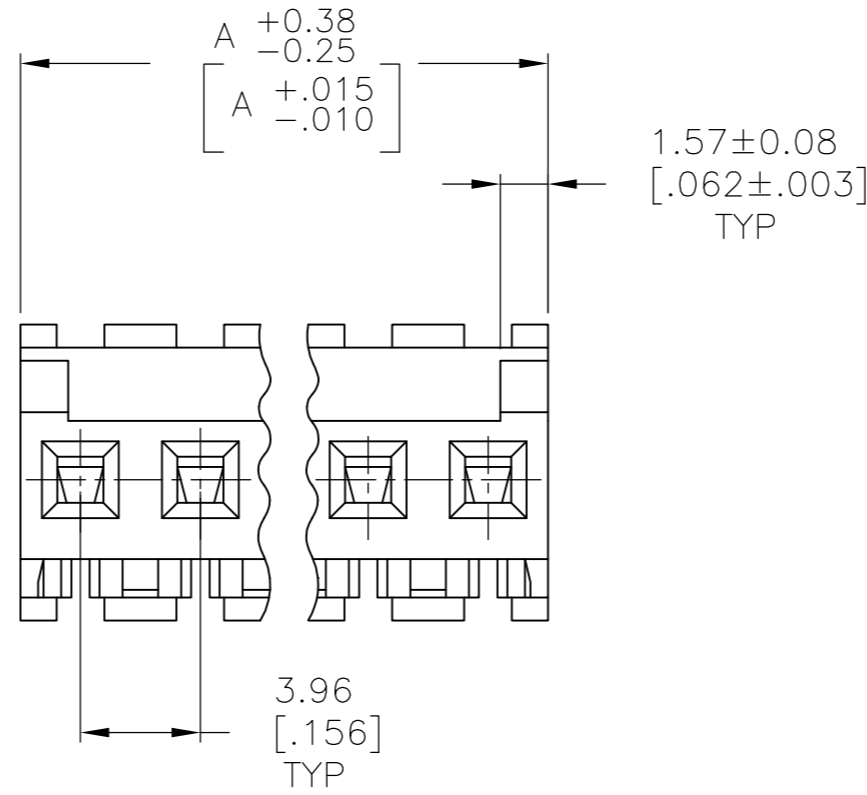
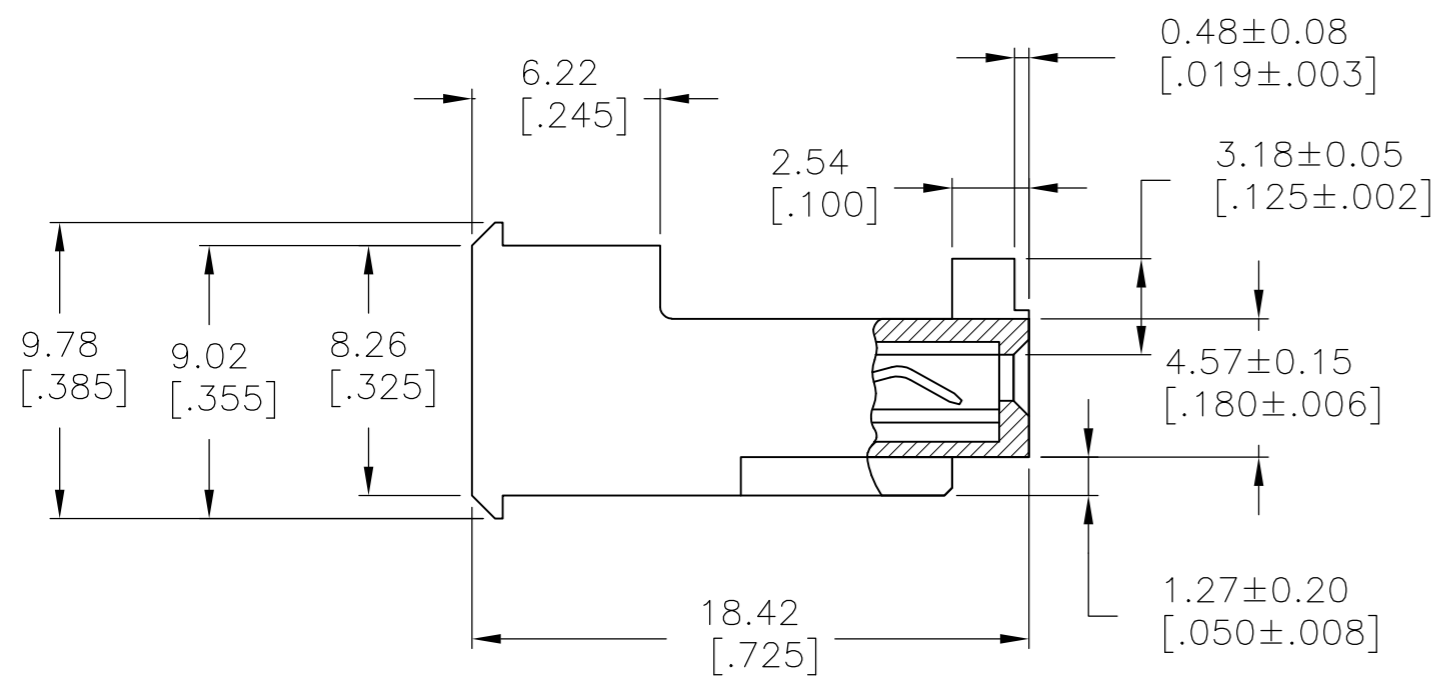
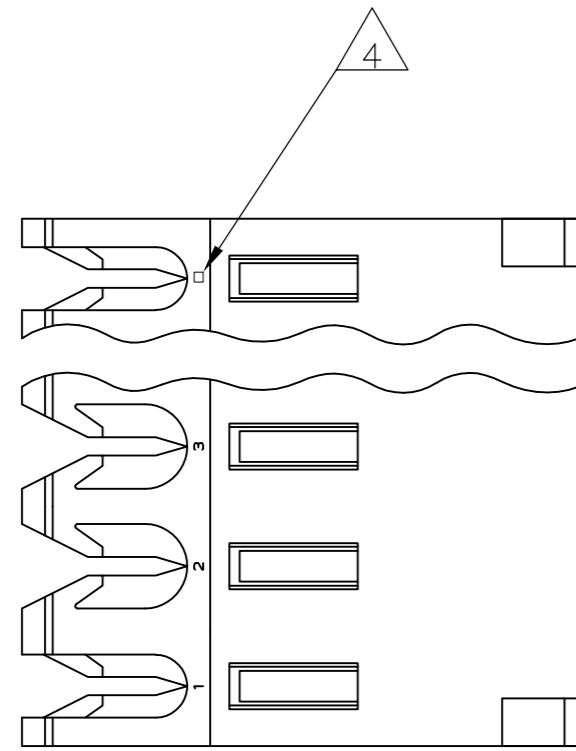
Address: A1208, Overseas Decoration Building, #122 Zhenhua RD., Futian, Shenzhen, China



THIS DRAWING IS UNPUBLISHED. RELEASED FOR PUBLICATION
 © COPYRIGHT - By - ALL RIGHTS RESERVED.

LOC		DIST		REVISIONS			
P	LTR	DESCRIPTION		DATE	DWN	APVD	
CM	54	D		REVISED PER ECO-12-007611	03AUG12	KH SM	

- 1 MATERIAL: CONNECTOR - NYLON UL94V-2
 CONTACTS - 0.30[.012] THICK COPPER ALLOY
 (BRIGHT TIN-LEAD 0.00203[.000080] MIN. THICK FOR CONTACTS 644469-2 THRU 1-644469-4)
 (MATTE WHISKER MITIGATED TIN 0.00203[.000080] MIN THICKNESS OVER NICKEL UNDERPLATE FOR 3-644469-2 THRU 4-644469-4).
- 2 CONTACTS ACCEPT 18 AWG WIRE WITH 2.41[.095] MAX INSULATION DIAMETER.
- 3 CONTACTS MUST ACCEPT 1.14±0.03[.045±.001] SQUARE POST AND REMAIN LOCKED IN POSITION.
- 4 IDENTIFICATION NUMBER FOR LAST CIRCUIT MAY NOT APPEAR ON ALL ASSEMBLIES.
- 5 DIMENSIONS IN BRACKETS ARE IN INCHES.
- 6 HOUSING FEATURES ARE: FEED-THRU WITHOUT LOCKING RAMP AND WITH POLARIZING TAB.
- 7 OBSOLETE PARTS: OBSOLETE CIS STREAMLINING PER D.RENAUD/D.SINISI
- 8 ORANGE COLOR STRIPE ON HOUSING (NOT SHOWN) MAY RUN DOWN BETWEEN RIBS



55.47 [2.184]	14	4-644469-4	
51.51 [2.028]	13	4-644469-3	
47.55 [1.872]	12	4-644469-2	
43.59 [1.716]	11	4-644469-1	
39.62 [1.560]	10	4-644469-0	
35.66 [1.404]	9	3-644469-9	
31.70 [1.248]	8	3-644469-8	
27.74 [1.092]	7	3-644469-7	
23.77 [.936]	6	3-644469-6	
19.81 [.780]	5	3-644469-5	
15.85 [.624]	4	3-644469-4	
11.89 [.468]	3	3-644469-3	
7.92 [.312]	2	3-644469-2	
7 SUPERSEDED	55.47 [2.184]	14	1-644469-4
7 SUPERSEDED	51.51 [2.028]	13	1-644469-3
	47.55 [1.872]	12	1-644469-2
7 SUPERSEDED	43.59 [1.716]	11	1-644469-1
7 SUPERSEDED	39.62 [1.560]	10	1-644469-0
7 SUPERSEDED	35.66 [1.404]	9	644469-9
7 SUPERSEDED	31.70 [1.248]	8	644469-8
7 SUPERSEDED	27.74 [1.092]	7	644469-7
7 SUPERSEDED	23.77 [.936]	6	644469-6
7 SUPERSEDED	19.81 [.780]	5	644469-5
7 SUPERSEDED	15.85 [.624]	4	644469-4
7 SUPERSEDED	11.89 [.468]	3	644469-3
7 SUPERSEDED	7.92 [.312]	2	644469-2
	DIM A	NO OF CIRCUITS	PART NO

644469

B

A

METRIC

THIS DRAWING IS A CONTROLLED DOCUMENT.

DWN B. LEWIS 12 FEB 91
 CHK R. SWING 12 FEB 91
 APVD D.R. CLARK 20 FEB 91

TE Connectivity

MTA 156 CONNECTOR ASSEMBLY, 18 AWG, STANDARD

108-1051
 114-1020

SIZE A2 CAGE CODE 00779 DRAWING NO C-644469 RESTRICTED TO -

WEIGHT - SCALE 4:1 SHEET 1 OF 1 REV D

CUSTOMER DRAWING