



Chipsmall Limited consists of a professional team with an average of over 10 year of expertise in the distribution of electronic components. Based in Hongkong, we have already established firm and mutual-benefit business relationships with customers from,Europe,America and south Asia,supplying obsolete and hard-to-find components to meet their specific needs.

With the principle of “Quality Parts,Customers Priority,Honest Operation,and Considerate Service”,our business mainly focus on the distribution of electronic components. Line cards we deal with include Microchip,ALPS,ROHM,Xilinx,Pulse,ON,Everlight and Freescale. Main products comprise IC,Modules,Potentiometer,IC Socket,Relay,Connector.Our parts cover such applications as commercial,industrial, and automotives areas.

We are looking forward to setting up business relationship with you and hope to provide you with the best service and solution. Let us make a better world for our industry!



Contact us

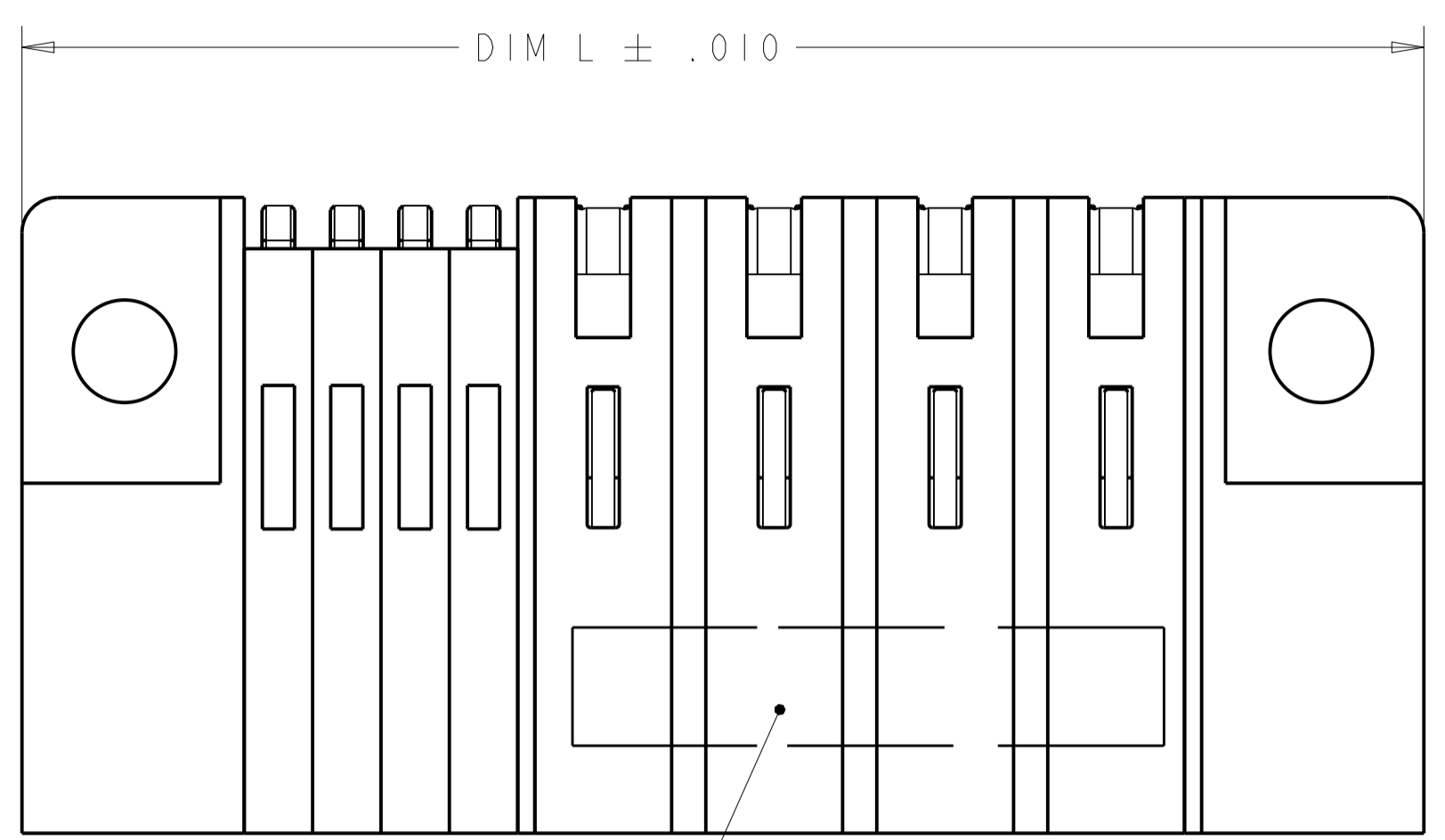
Tel: +86-755-8981 8866 Fax: +86-755-8427 6832

Email & Skype: info@chipsmall.com Web: www.chipsmall.com

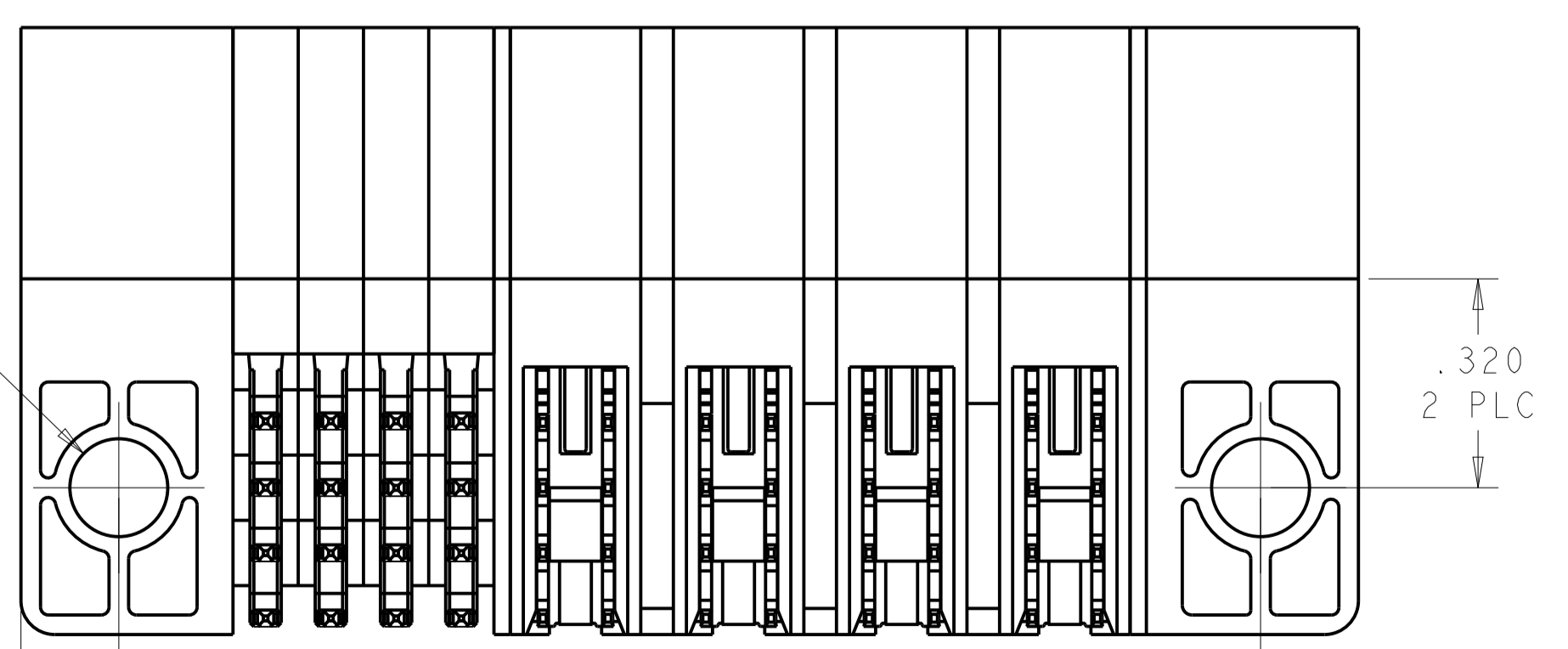
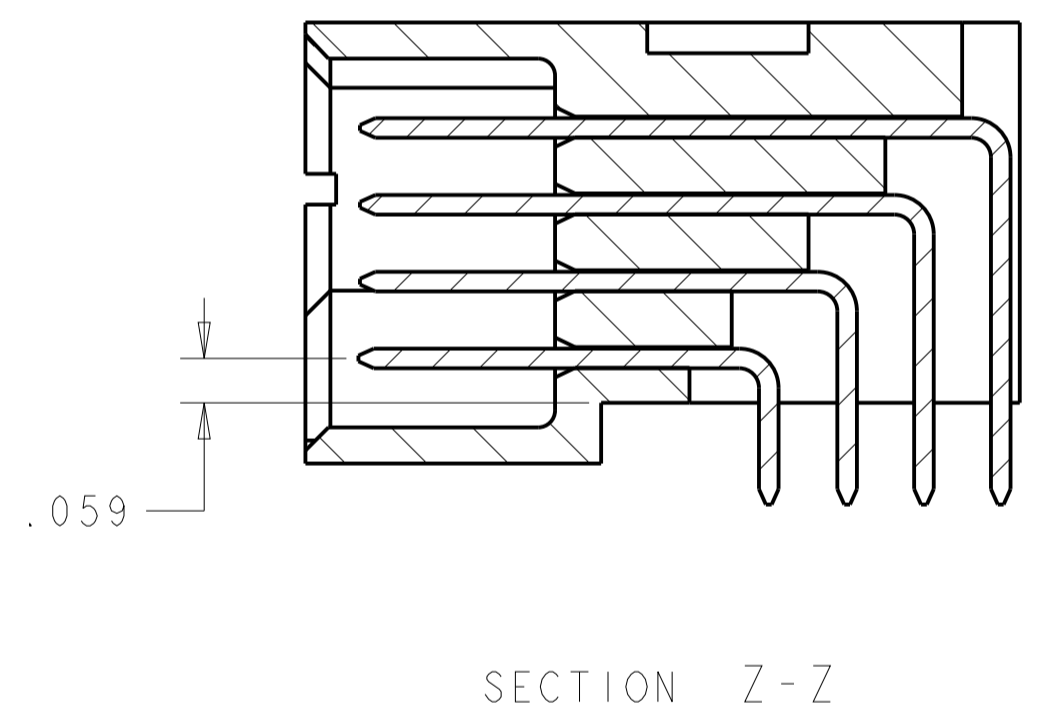
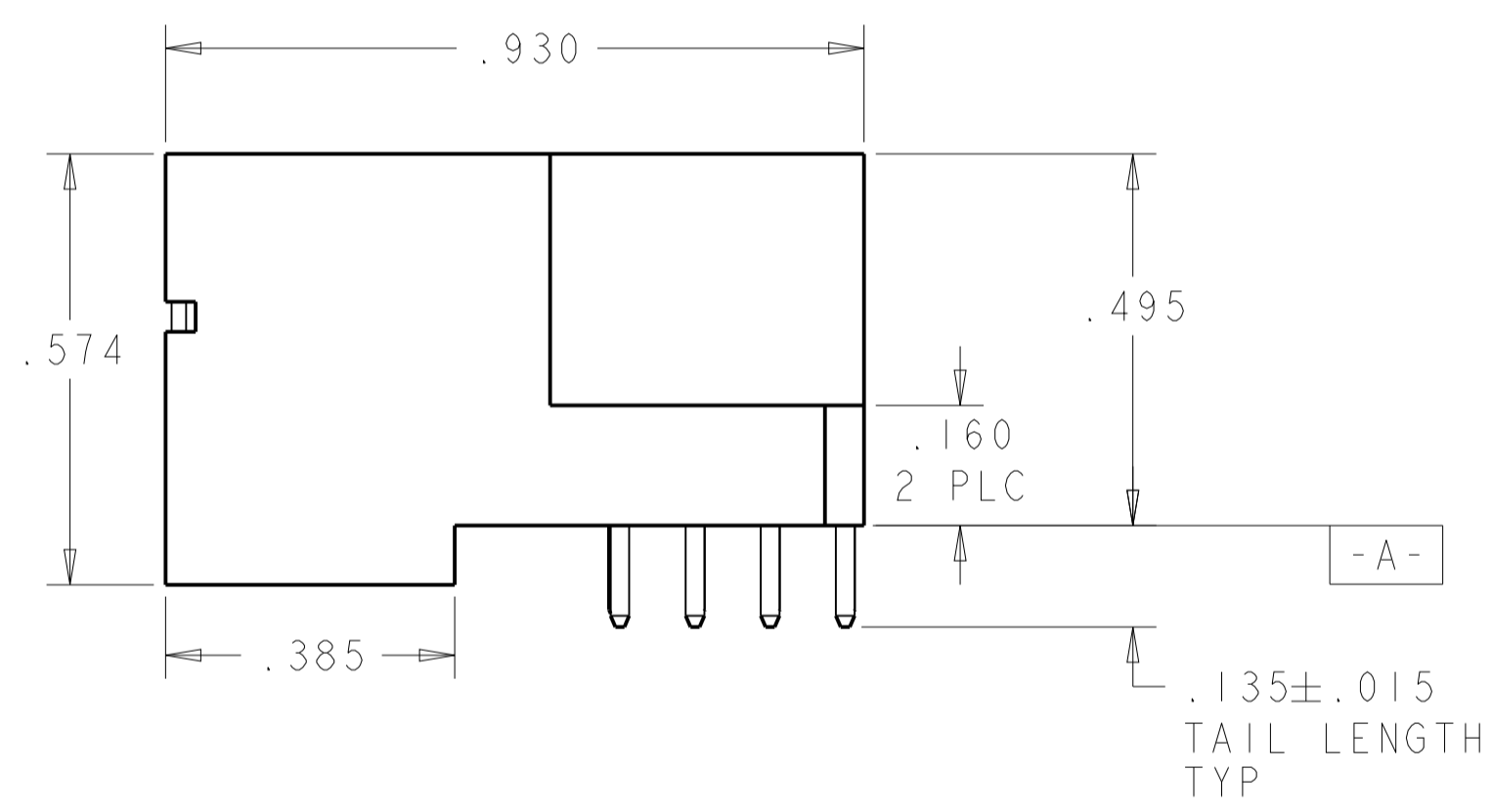
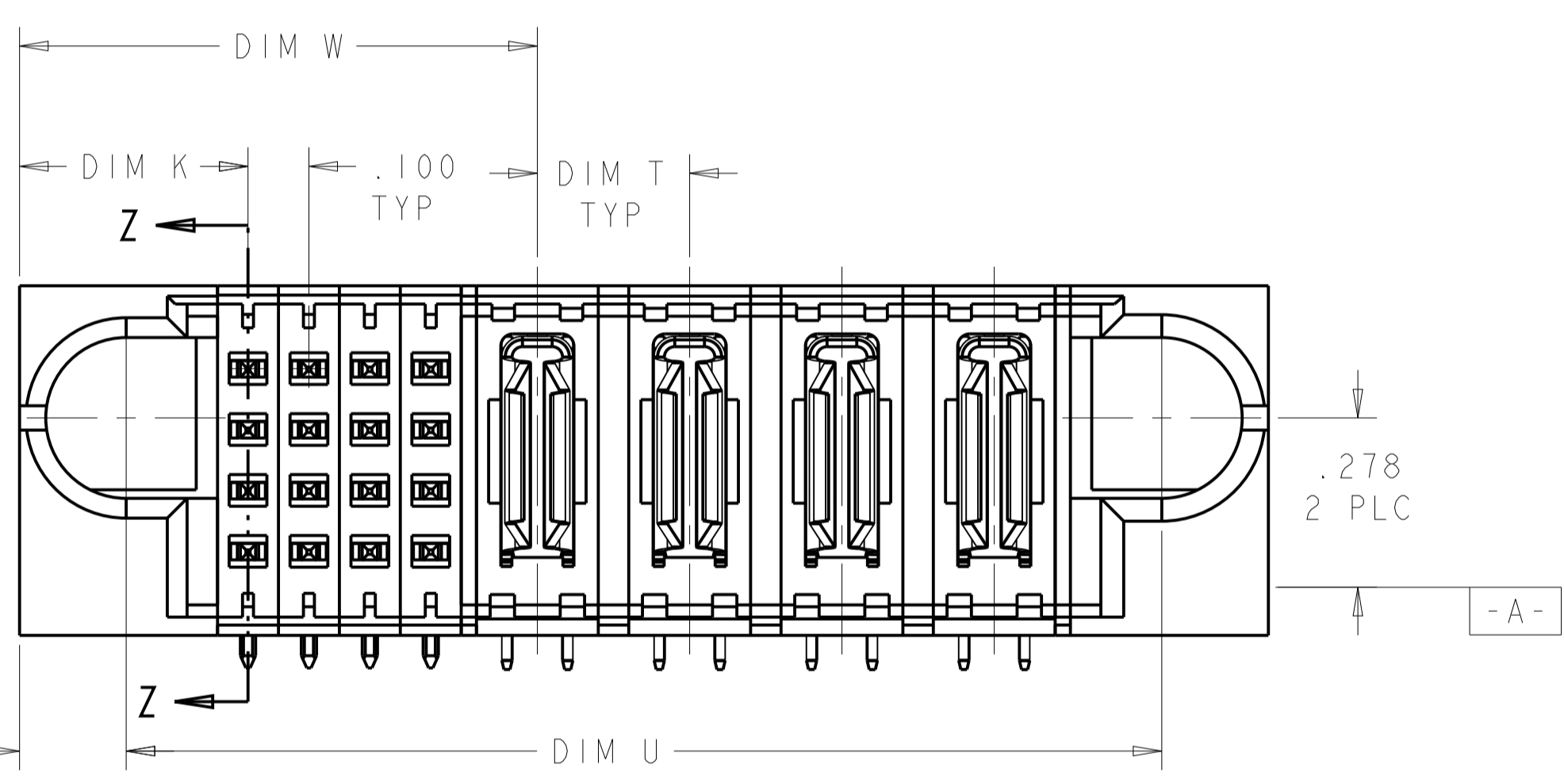
Address: A1208, Overseas Decoration Building, #122 Zhenhua RD., Futian, Shenzhen, China



LOC	DIST	REVISIONS					
		P	LTN	DESCRIPTION	DATE	DMN	APVD
ES	00	E9		REVISE 1-6	17SEP2014	AL	SZ



- 1 "AMP", PART NUMBER, AND DATECODE TO BE MARKED IN AREA SHOWN. PARTS UNDER 2.00 LONG MAY BE MARKED ON BOTH SIDES.
- 2 MATERIAL: HOUSING - GLASS FILLED HIGH TEMP THERMO PLASTIC, UL94 V-0
SIGNAL CONTACT - COPPER ALLOY
POWER CONTACT - HIGH CONDUCTIVITY COPPER ALLOY
- 3 CONTACT PLATING: NOBLE METAL PLATING ON CONTACT FUNCTIONAL AREA OF POWER AND SIGNAL CONTACTS
- 4 MECHANICAL CONNECTOR KEEP OUT ZONE.
- 5 DATUM AND BASIC DIMENSIONS ESTABLISHED BY CUSTOMER.
- 6 PCB - HOLE DIAMETERS ARE FINISHED HOLE SIZE.
- 7 PCB - .0453±.0010 DRILLED HOLES PLATED WITH .0003 MIN Sn OVER .001 TO .003 Cu PLATING TO ACHIEVE A .040 DIA HOLE.
- 8 NOT RELEASED FOR PRODUCTION.
- 9 VARIABLE DIMENSION SHOW ON VIEW (SHEET 2, SHEET 3 AND SHEET 5).



DIM W	DIM K	DIM T	DIM D	DIM U	DIM L	DESCRIPTION	PART NUMBER
-	.375	-	1.750	1.700	2.050	56S	1-6450331-6
.750	.375	.250	1.650	1.600	1.950	12S + 4P	1-6450331-5
1.050	.375	.200	3.375	3.500	3.675	24S + 12HDP	1-6450331-4
1.050	.375	.200	3.000	2.950	3.300	24S + 10HDP	1-6450331-3
1.100	.400	△	3.275	3.225	3.575	24S + 9P	1-6450331-2
.825	.375	.200	1.550	1.500	1.850	16S + 4P	1-6450331-1
.750	.375	.250	1.650	1.600	1.950	12S + 4P	1-6450331-0
1.050	.375	.250	2.450	2.400	2.750	24S + 6P	6450331-9
.850	.375	.250	2.000	1.950	2.300	16S + 5P	6450331-8
1.075	.400	△	2.650	2.600	2.950	24S + 8P	6450331-7
.850	.375	.250	1.750	1.700	2.050	16S + 4P	6450331-6
1.250	.375	△	3.450	3.400	3.750	32S + 11P	6450331-3

THIS DRAWING IS A CONTROLLED DOCUMENT. DIMENSIONS: INCHES. TOLERANCES UNLESS OTHERWISE SPECIFIED: 0 PLC ±.01, 2 PLC ±.01, 3 PLC ±.005, 4 PLC ±.0020, ANGLES ±.020. MATERIAL: 3. FINISH: 4. THIS DRAWING IS A CONTROLLED DOCUMENT. DMN: DENNY ZHU, CHN: SUNY ZHAO, APVD: SUNY ZHAO. NAME: SUNY ZHAO. PRODUCT SPEC: 108-1973. APPLICATION SPEC: 114-13038. WEIGHT: -. SIZE: A1. CAGE CODE: 6450331. DRAWING NO: 100779. CUSTOMER DRAWING. SCALE: 4:1. SHEET: 1 OF 7. REV: E9.

STE TE Connectivity
RIGHT ANGLE HEADER ASSEMBLY WITH GUIDES, .150 MOUNTING HOLES DUAL BEAM XL SOLDER TYPE

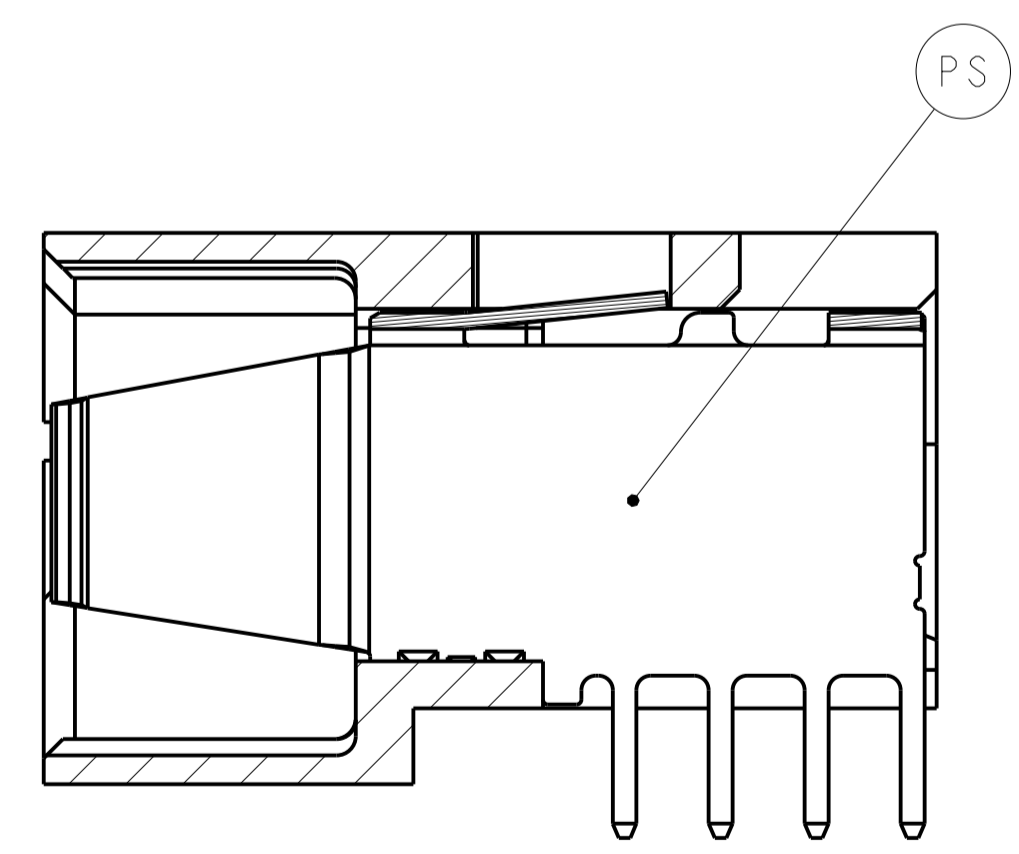
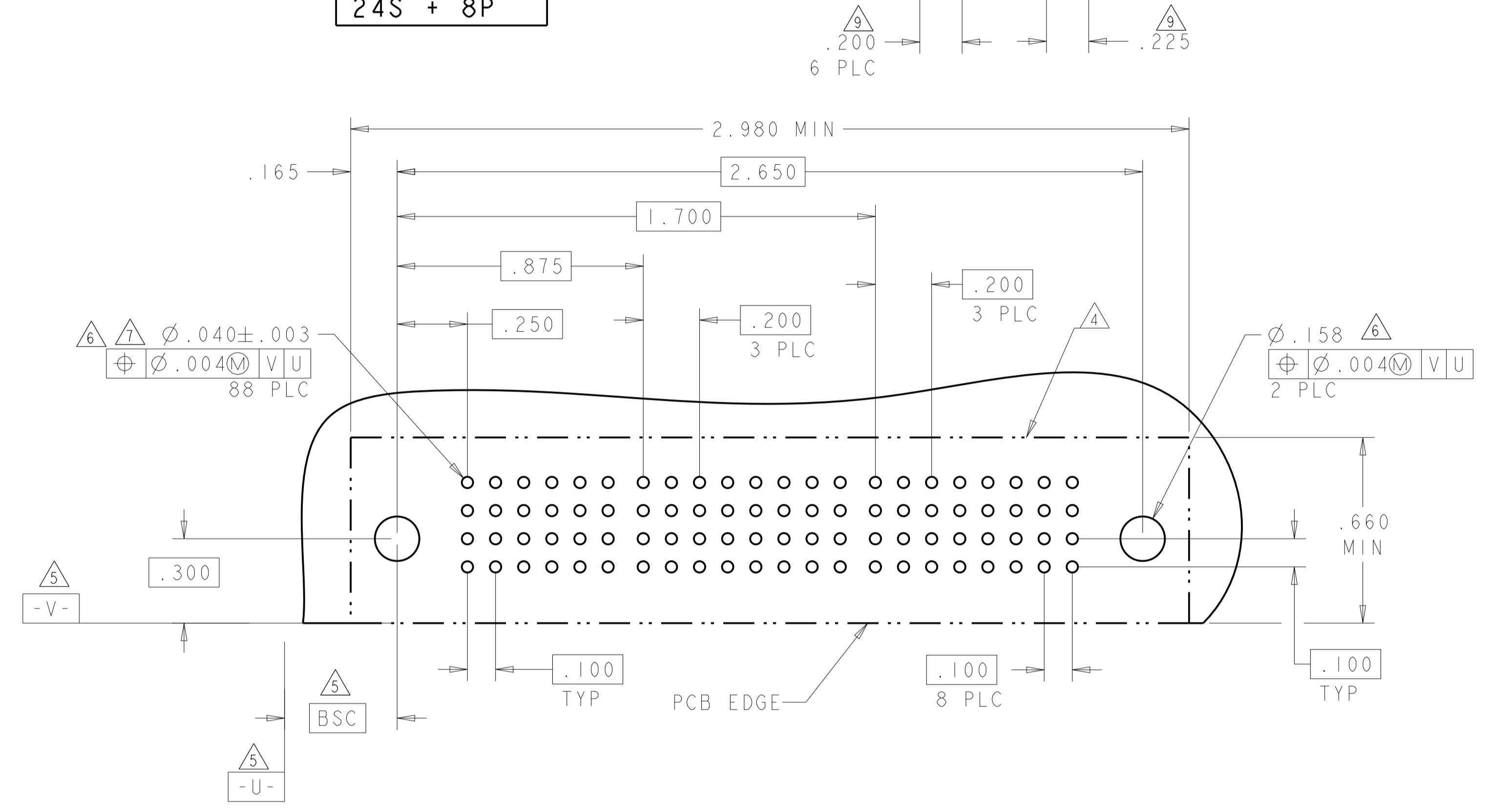
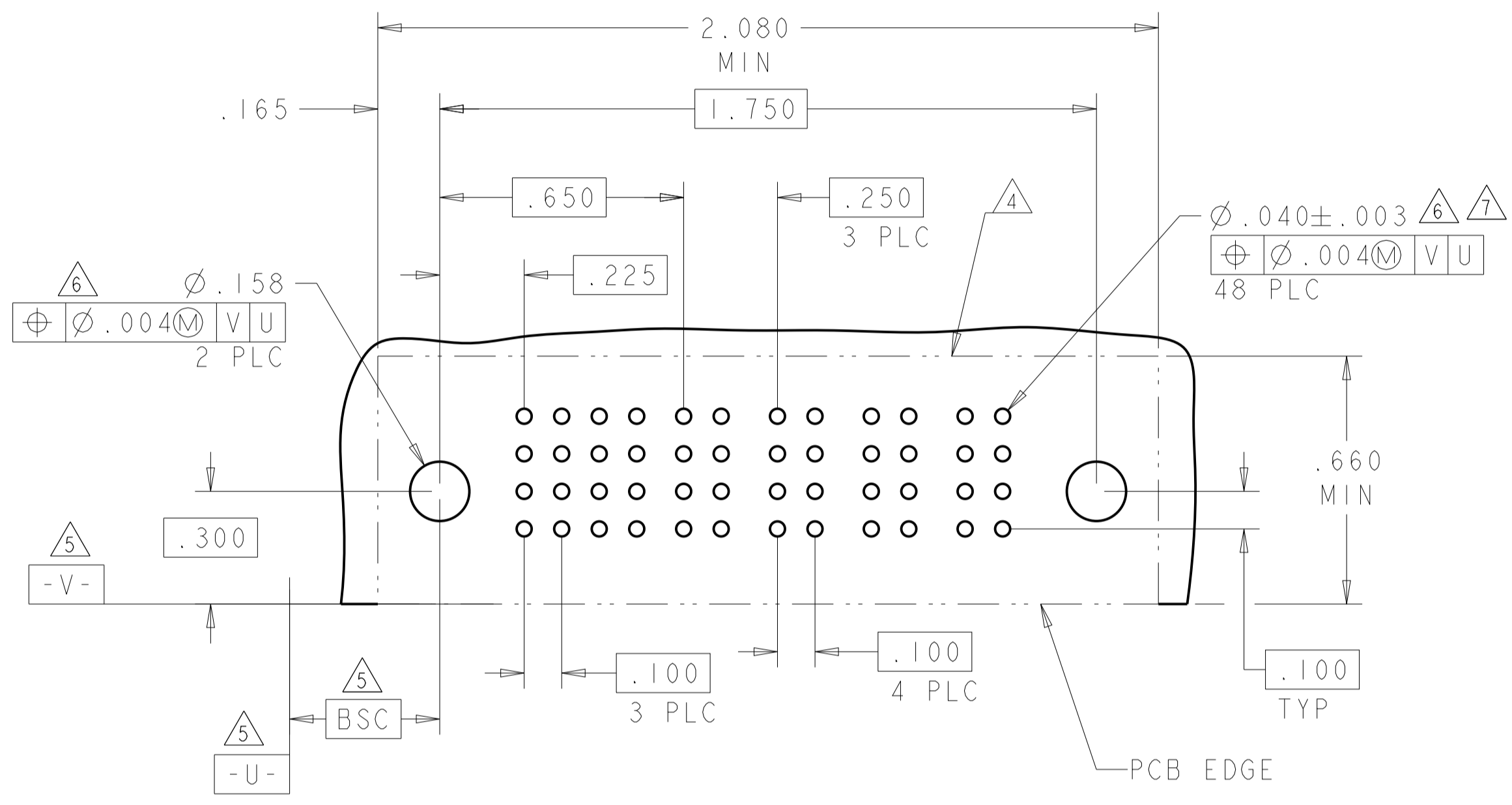
LOC	DIST	REV	DATE	BY	APPV
ES	00				

PART NUMBER	ROWS	SIGNAL				POWER			
		1	2	3	4	P1	P2	P3	P4
6450331-6	D	J	J	J	J	PS	PS	PS	PS
	C	K	K	K	K				
	B	N	N	N	N				
	A	H	S	S	S				

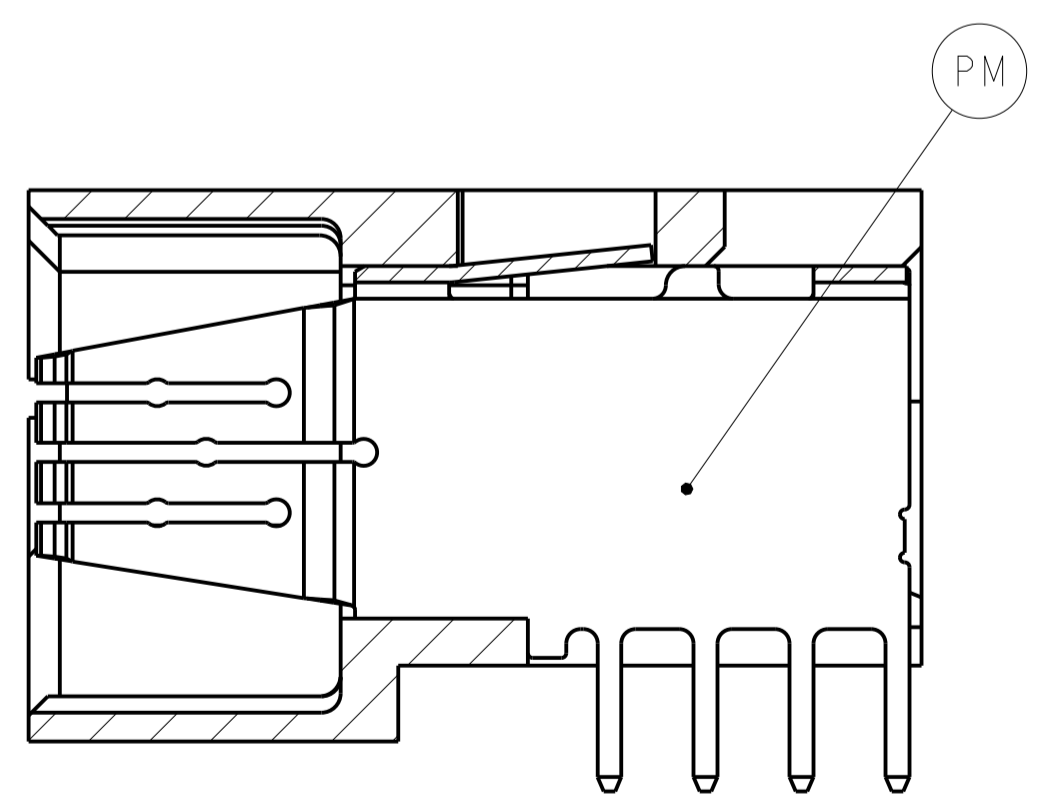
16S + 4P

ASSY PART NUMBER	ROWS	SIGNAL						POWER							
		1	2	3	4	5	6	P1	P2	P3	P4	P5	P6	P7	P8
6450331-7	D	J	J	J	J	J	J	PM	PM	PM	PM	PM	PM	PM	PM
	C	K	K	K	K	K	K								
	B	N	N	N	N	N	G								
	A	S	S	S	S	S	S								

24S + 8P



DUAL BEAM



FOUR BEAM

ROW	DESCRIPTION	CODE
D	SIGNAL CONTACT, STD	J
C	SIGNAL CONTACT, STD	K
B	SIGNAL CONTACT, STD	N
A	SIGNAL CONTACT, STD	S
A	SIGNAL CONTACT, MLBF	H
B	SIGNAL CONTACT, MLBF	G
C	SIGNAL CONTACT, MLBF	F
D	SIGNAL CONTACT, MLBF	E
-	POWER CONTACT(FOUR BEAM)	PM
-	POWER CONTACT(DUAL BEAM)	PS

THIS DRAWING IS A CONTROLLED DOCUMENT. DIMENSIONS: INCHES. TOLERANCES UNLESS OTHERWISE SPECIFIED: 0 PLC ±.01, 2 PLC ±.01, 3 PLC ±.005, 4 PLC ±.0020. MATERIAL: 3. FINISH: 4.

OWN: DENNY ZHU 07AUG2006. CHK: SUNY ZHAO 07AUG2006. APVD: SUNY ZHAO. NAME: RIGHT ANGLE HEADER ASSEMBLY WITH GUIDES, .150 MOUNTING HOLES DUAL BEAM XL SOLDER TYPE. SIZE: 114-13038. WEIGHT: -. SCALE: 4:1. SHEET 2 OF 7. REV: E9.

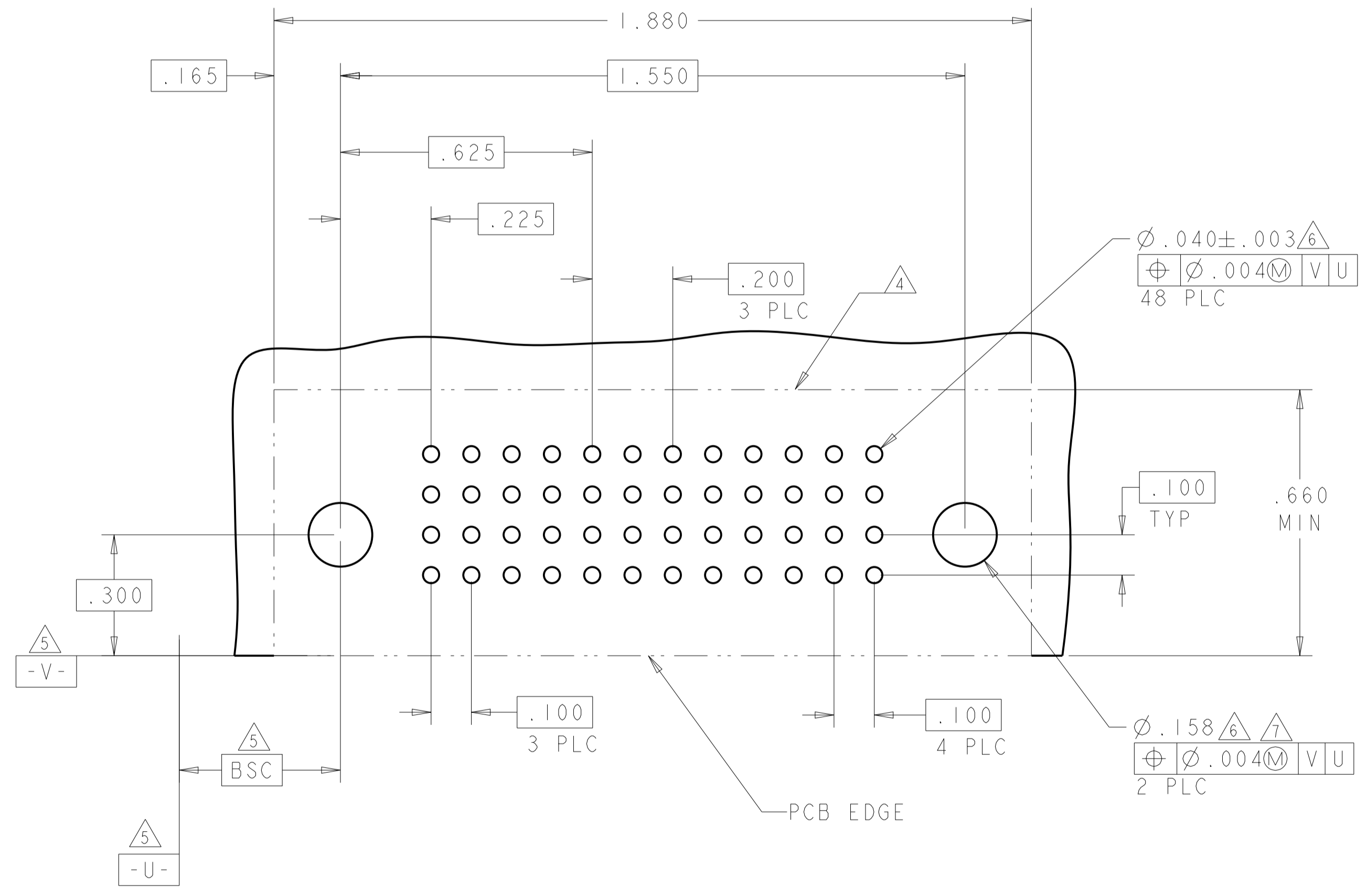
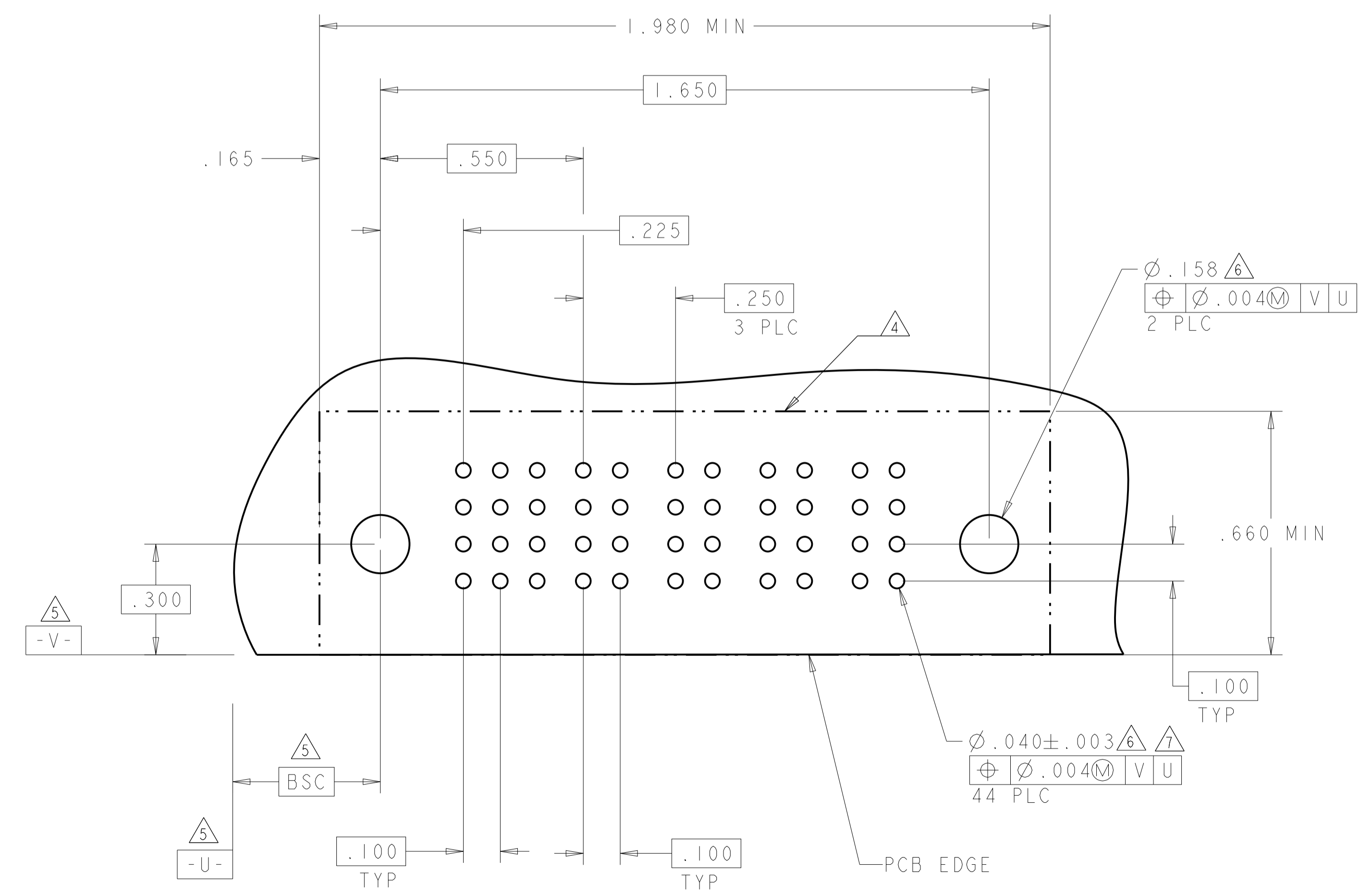
STE TE Connectivity

LOC	DIST	REV	DATE	BY	APPD
ES	00				
REVISIONS					
DESCRIPTION			DATE	BY	APPD
SEE SHEET 1					

ASSY PART NUMBER	ROWS	SIGNAL			POWER			
		1	2	3	P1	P2	P3	P4
I-6450331-5	D	J	E	J	PM	PM	PM	PM
	C	F	F	K				
	B	N	N	N				
	A	S	S	S				
12S + 4P								

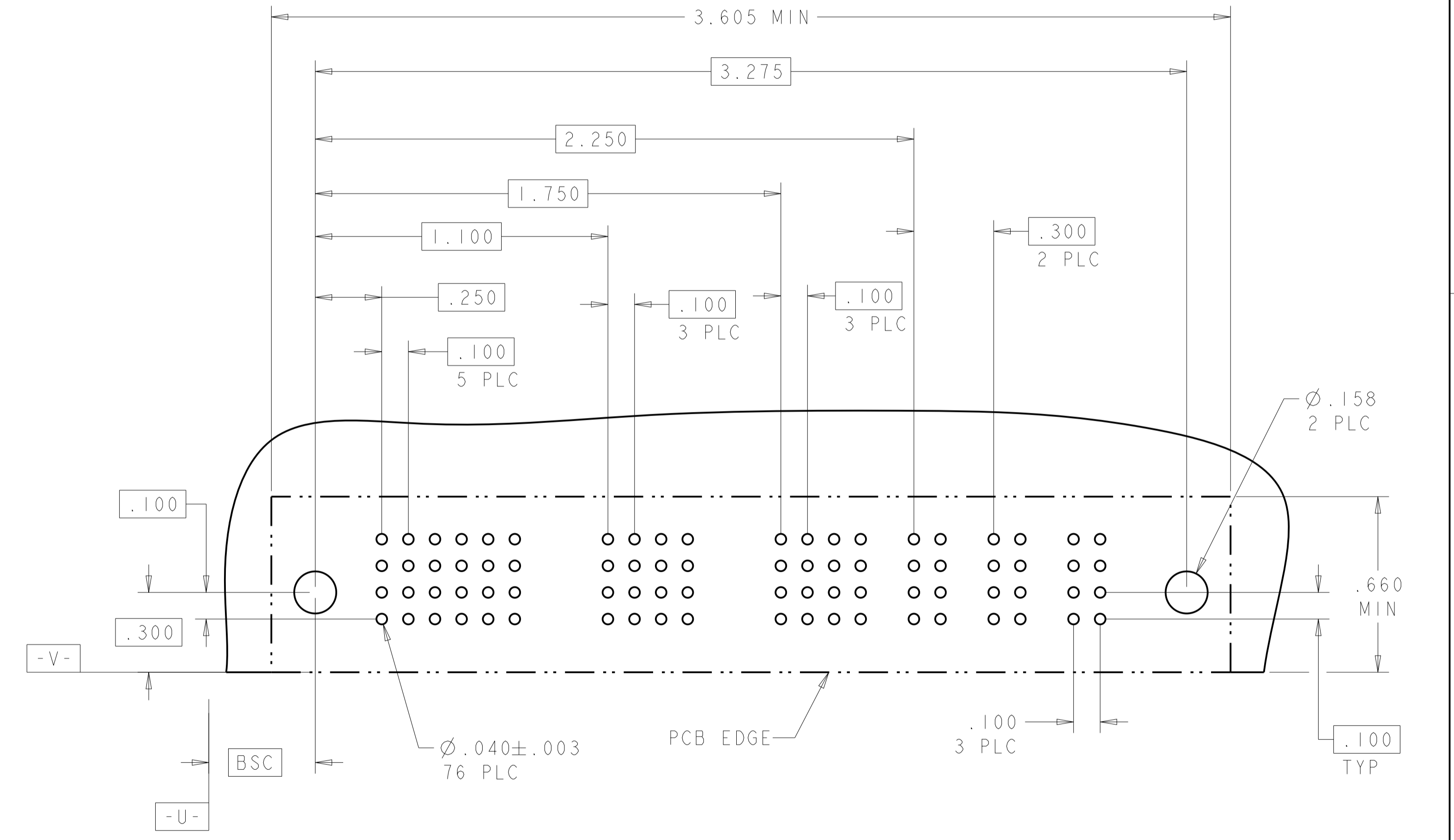
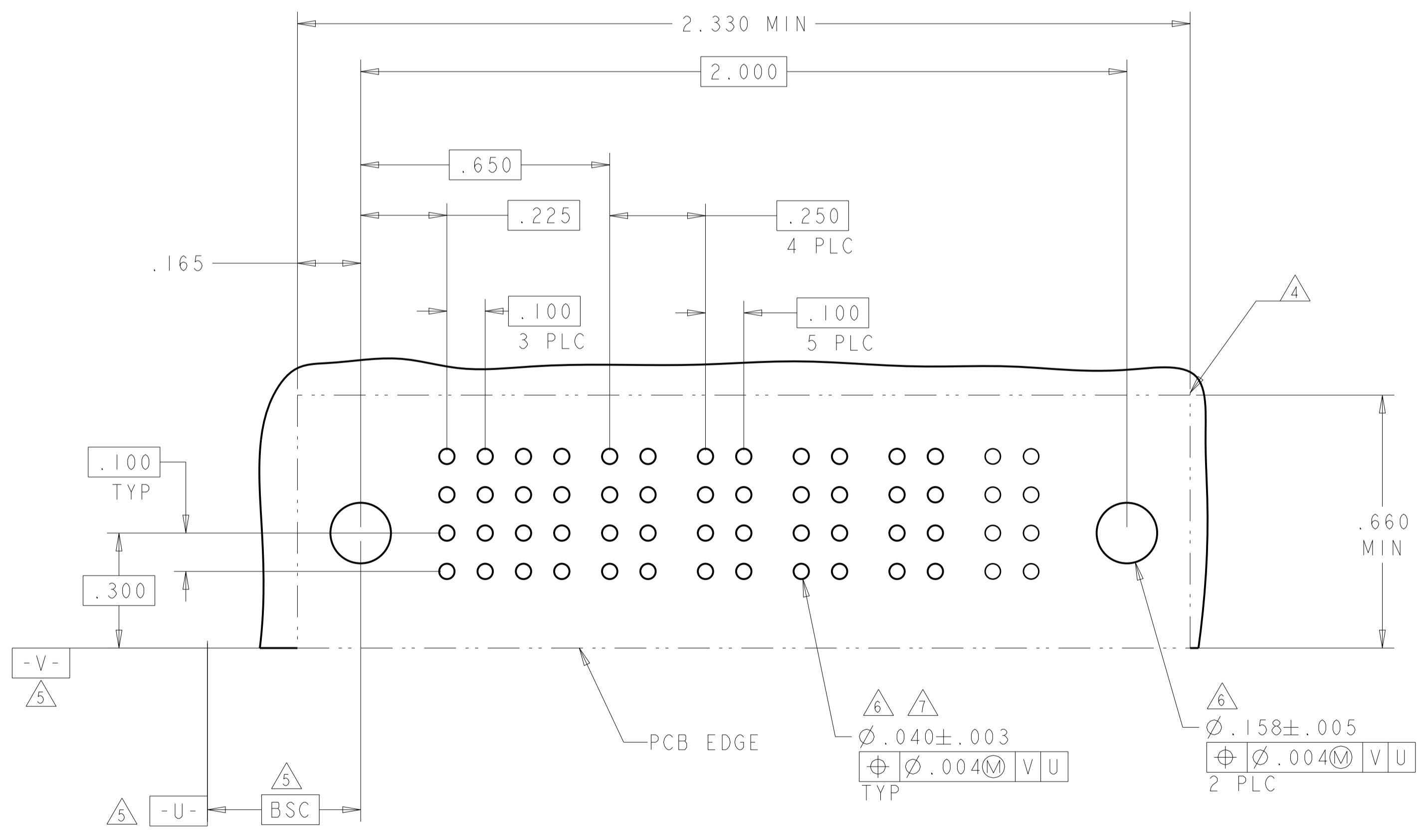
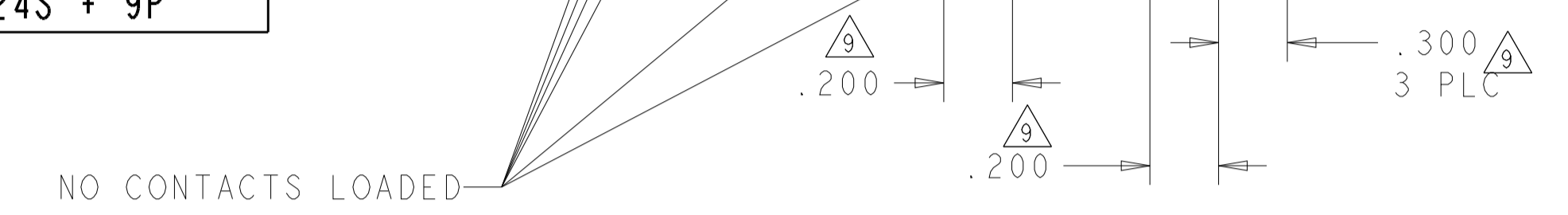
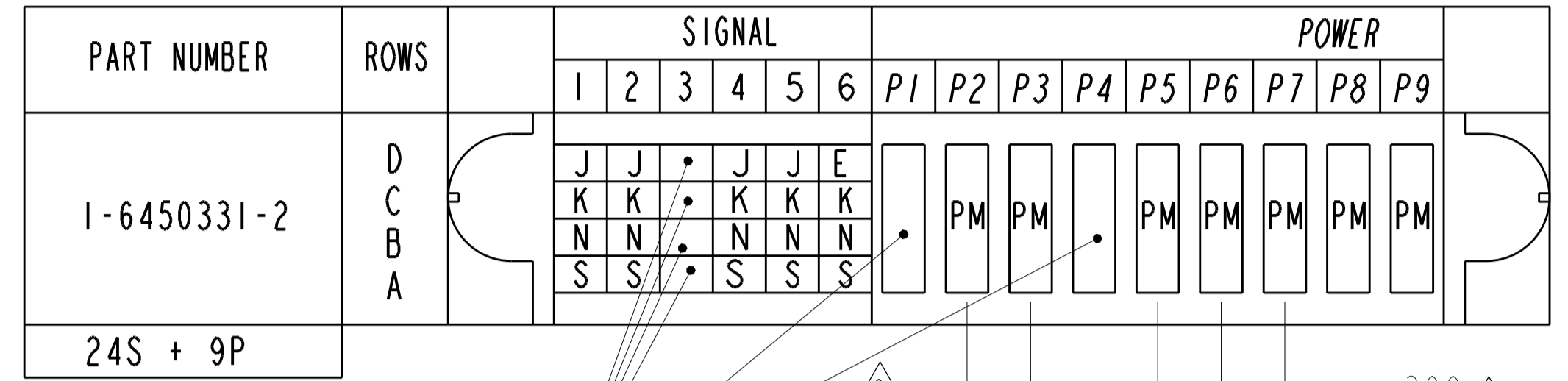
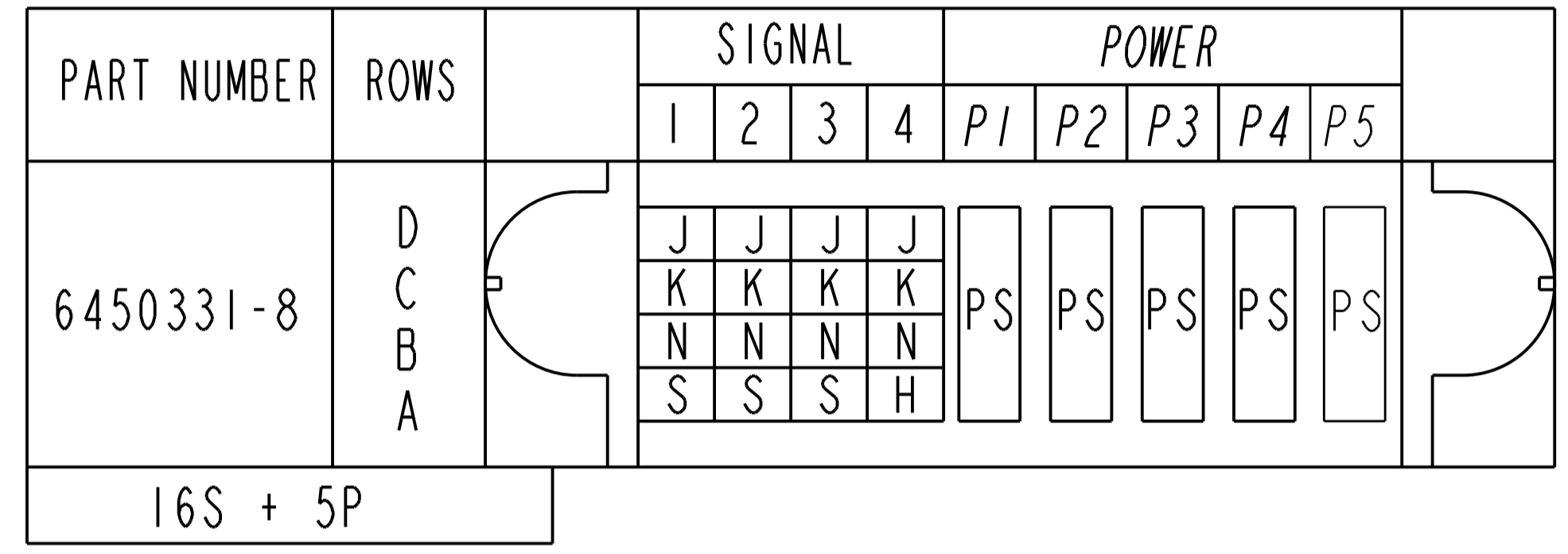
PART NUMBER	ROWS	SIGNAL				POWER			
		1	2	3	4	P1	P2	P3	P4
I-6450331-1	D	J	J	J	J	PM	PM	PM	PM
	C	K	K	K	K				
	B	N	N	N	N				
	A	S	S	S	S				
16S + 4P									

ASSY PART NUMBER	ROWS	SIGNAL			POWER			
		1	2	3	P1	P2	P3	P4
I-6450331-0	D	J	J	J	PM	PM	PM	PM
	C	K	K	K				
	B	N	N	N				
	A	H	S	S				
12S + 4P								



THIS DRAWING IS A CONTROLLED DOCUMENT.		OWN: DENNY ZHU 07AUG2006	 TE Connectivity
DIMENSIONS: INCHES		CHK: SUNY ZHAO 07AUG2006	
TOLERANCES UNLESS OTHERWISE SPECIFIED:		APVD: SUNY ZHAO	NAME: RIGHT ANGLE HEADER ASSEMBLY WITH GUIDES, .150 MOUNTING HOLES DUAL BEAM XL SOLDER TYPE
0 PLC ±.01		PRODUCT SPEC: 108-1973	SIZE: A1
1 PLC ±.01		APPLICATION SPEC: 114-13038	CAGE CODE: 6450331
2 PLC ±.005		WEIGHT: -	RESTRICTED TO: -
3 PLC ±.005		Customer Drawing	SCALE: 4:1
4 PLC ±.0020			SHEET: 4 OF 7
ANGLES ±.020			REV: E9

LOC	DIST	REVISIONS			
P	LTN	DESCRIPTION	DATE	DMN	APVD
-	-	SEE SHEET 1	-	-	-

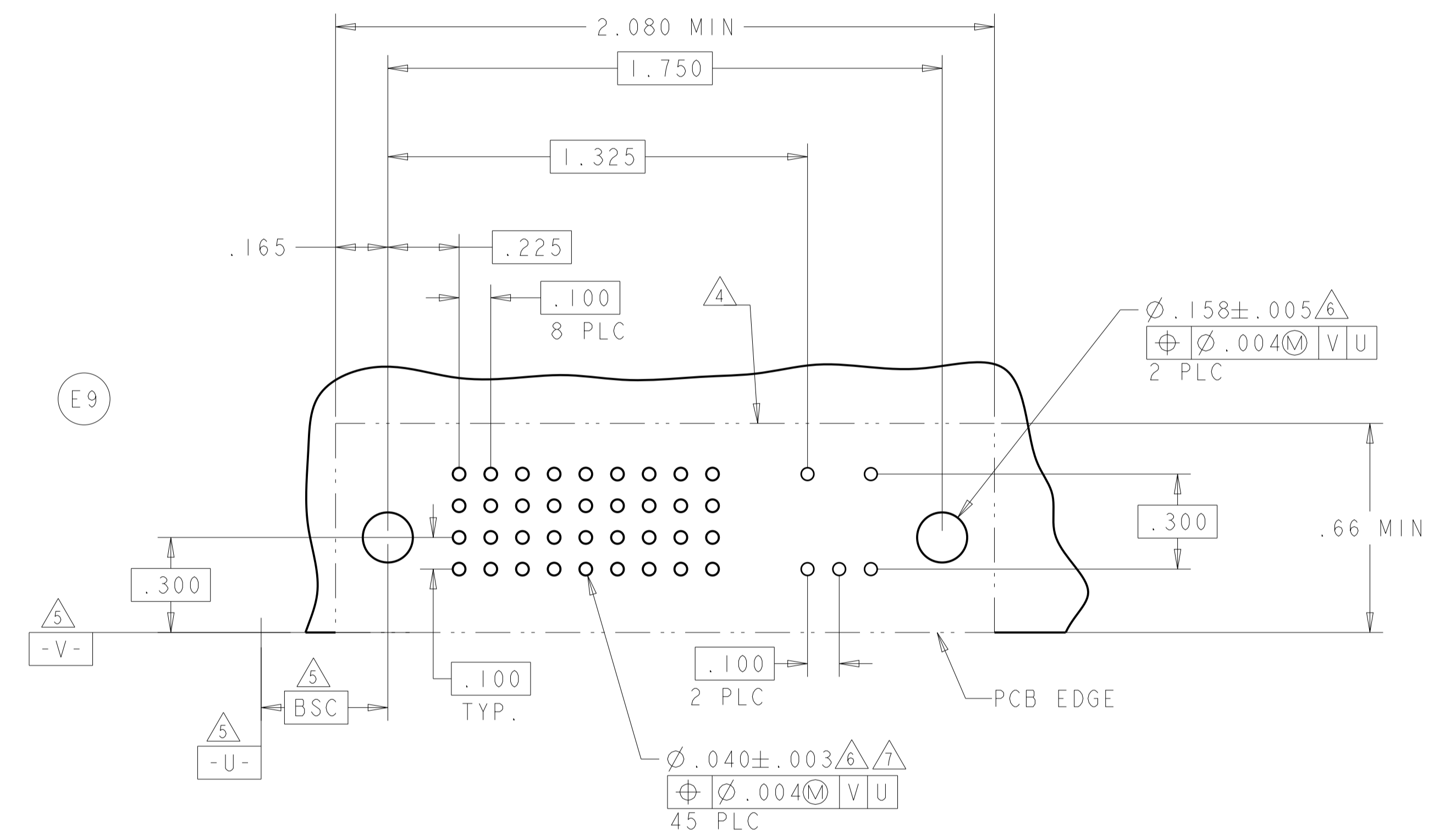


THIS DRAWING IS A CONTROLLED DOCUMENT.		DMN: DENNY ZHU 07AUG2006	 TE Connectivity
DIMENSIONS: INCHES		CHK: SUNY ZHAO 07AUG2006	
TOLERANCES UNLESS OTHERWISE SPECIFIED:		APVD: SUNY ZHAO	NAME: RIGHT ANGLE HEADER ASSEMBLY WITH GUIDES, .150 MOUNTING HOLES DUAL BEAM XL SOLDER TYPE
0 PLC ±.01		PRODUCT SPEC: 108-1973	SIZE: A100779
1 PLC ±.01		APPLICATION SPEC: 114-13038	CAGE CODE: C=6450331
2 PLC ±.005		WEIGHT: -	RESTRICTED TO: -
3 PLC ±.002		Customer Drawing	SCALE: 4:1
4 PLC ±.0020			SHEET 5 OF 7
ANGLES: $\pm 30^\circ$			REV: E9

LOC	DIST	REVISIONS					
		P.	LTN	DESCRIPTION	DATE	DMN	APVD
ES	00	-	-	SEE SHEET 1	-	-	-

ASSY PART NUMBER	ROWS	SIGNAL													
		1	2	3	4	5	6	7	8	9	10	11	12	13	14
1-6450331-6	D	J	J	J	J	J	J	J	J	J			E	E	
	C	K	K	K	K	K	K	K	K						
	B	N	N	N	N	N	N	N	N						
	A	S	S	S	S	S	S	S	S				S	S	S
56S															

NO CONTACT LOADED



THIS DRAWING IS A CONTROLLED DOCUMENT.		OWN: DENNY ZHU 07AUG2006	 TE Connectivity
DIMENSIONS: INCHES		CHK: SUNY ZHAO 07AUG2006	
TOLERANCES UNLESS OTHERWISE SPECIFIED: 0 PLC ±. 1 PLC ±.01 2 PLC ±.01 3 PLC ±.005 4 PLC ±.0020 ANGLES ±.2°		APVD: SUNY ZHAO	NAME: RIGHT ANGLE HEADER ASSEMBLY WITH GUIDES, .150 MOUNTING HOLES DUAL BEAM XL SOLDER TYPE
MATERIAL: -		FINISH: -	RESTRICTED TO: -
Customer Drawing		SCALE: 4:1	SHEET 7 OF 7