



Chipsmall Limited consists of a professional team with an average of over 10 year of expertise in the distribution of electronic components. Based in Hongkong, we have already established firm and mutual-benefit business relationships with customers from,Europe,America and south Asia,supplying obsolete and hard-to-find components to meet their specific needs.

With the principle of “Quality Parts,Customers Priority,Honest Operation,and Considerate Service”,our business mainly focus on the distribution of electronic components. Line cards we deal with include Microchip,ALPS,ROHM,Xilinx,Pulse,ON,Everlight and Freescale. Main products comprise IC,Modules,Potentiometer,IC Socket,Relay,Connector.Our parts cover such applications as commercial,industrial, and automotives areas.

We are looking forward to setting up business relationship with you and hope to provide you with the best service and solution. Let us make a better world for our industry!



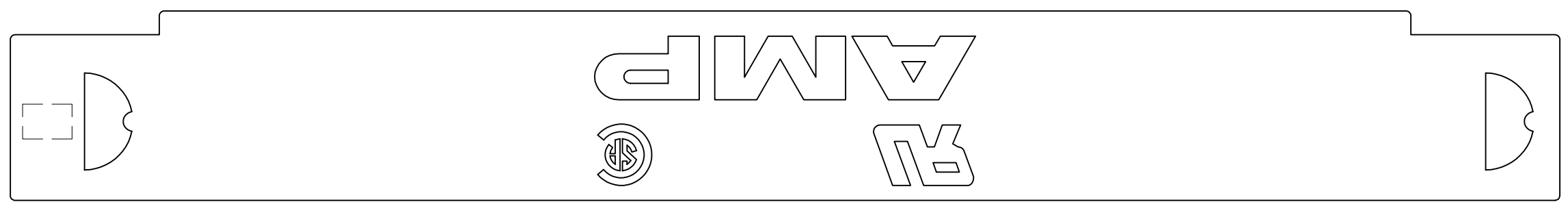
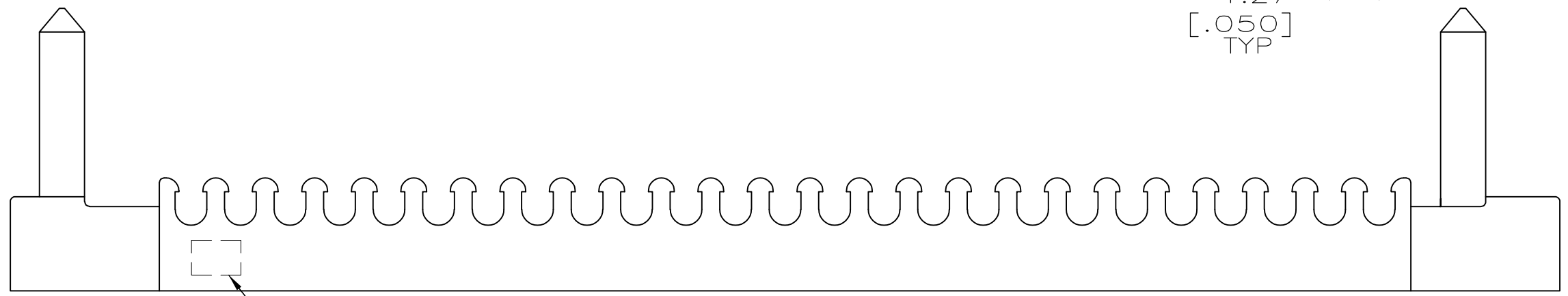
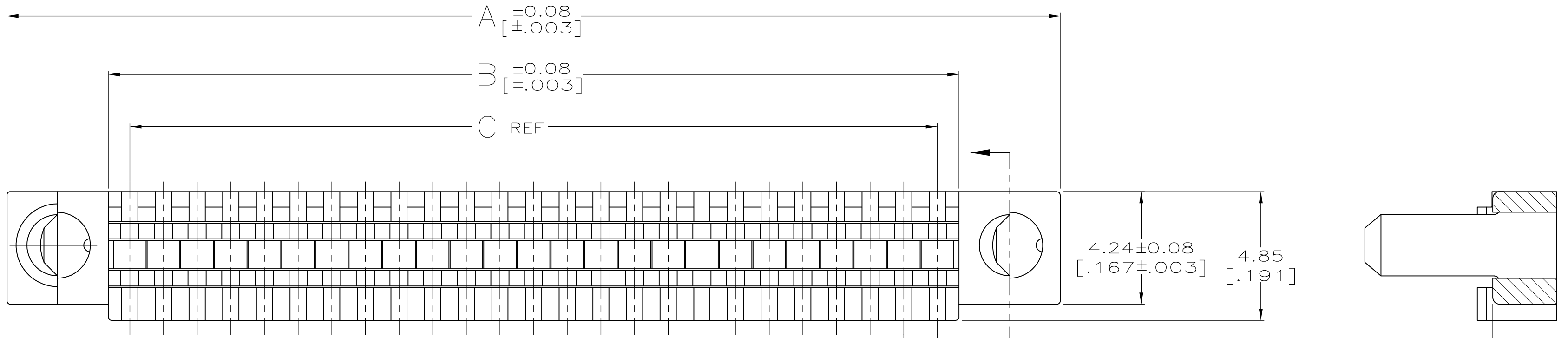
Contact us

Tel: +86-755-8981 8866 Fax: +86-755-8427 6832

Email & Skype: info@chipsmall.com Web: www.chipsmall.com

Address: A1208, Overseas Decoration Building, #122 Zhenhua RD., Futian, Shenzhen, China





- 1 NYLON OR POLYESTER, UL 94V-0 RATED, COLOR: SEE TABLE.
- 2 RECOMMENDED WIRE: 28 AWG OR 30 AWG SOLID OR 7 STRAND. SEE TABLE FOR INSULATION DIA. WIRE MUST BE APPROVED BY AMP INC.
- 3. TWO COVERS REQUIRED PER CONNECTOR ASSEMBLY.
- 4 OBSOLETE PARTS: OBSOLETE CIS STREAMLINING PER D.RENAUD/D.SINISI

	0.74-0.79	[.029-.031]	GRAY	2	62.23	[2.450]	63.86	[2.514]	71.50	[2.815]	100	1-750877-9
	0.74-0.79	[.029-.031]	GRAY	2	41.91	[1.650]	43.54	[1.714]	51.18	[2.015]	68	1-750877-7
	0.74-0.79	[.029-.031]	GRAY	2	30.48	[1.200]	32.11	[1.264]	39.75	[1.565]	50	1-750877-5
4 OBSOLETE	0.74-0.79	[.029-.031]	GRAY	2	24.13	[.950]	25.76	[1.014]	33.40	[1.315]	40	1-750877-4
	0.74-0.79	[.029-.031]	GRAY	2	15.24	[.600]	16.87	[.664]	24.51	[.965]	26	1-750877-2
4 OBSOLETE	0.81-0.91	[.032-.036]	BLACK	1	62.23	[2.450]	63.86	[2.514]	71.50	[2.815]	100	750877-9
	0.81-0.91	[.032-.036]	BLACK	1	49.53	[1.950]	51.156	[2.014]	58.801	[2.315]	80	750877-8
	0.81-0.91	[.032-.036]	BLACK	1	41.91	[1.650]	43.54	[1.714]	51.18	[2.015]	68	750877-7
	0.81-0.91	[.032-.036]	BLACK	1	30.48	[1.200]	32.11	[1.264]	39.75	[1.565]	50	750877-5
4 OBSOLETE	0.81-0.91	[.032-.036]	BLACK	1	24.13	[.950]	25.76	[1.014]	33.40	[1.315]	40	750877-4
	0.81-0.91	[.032-.036]	BLACK	1	15.24	[.600]	16.87	[.664]	24.51	[.965]	26	750877-2
	WIRE OUTER DIA		2	COLOR							NO OF POSN	PART NUMBER

THIS DRAWING IS A CONTROLLED DOCUMENT.

DIMENSIONS: 單位: 毫米 mm[INCHES]	TOLERANCES UNLESS OTHERWISE SPECIFIED: 一般公差	DWN B. MCMASTER 14JUNE04	TE Connectivity
	0 PLC ± - 1 PLC ± - 2 PLC ± 0.13 [.005] 3 PLC ± - 4 PLC ± - ANGLES ± -	CHK S. SHUEY 14JUNE04 APVD M. WALMSLEY 14JUNE04 PRODUCT SPEC 製品規格 APPLICATION SPEC 取付適用規格	
MATERIAL 材料	FINISH 仕上	WEIGHT -	SIZE A2 CAGE CODE 00779 DRAWING NO G-750877 RESTRICTED TO -
		CUSTOMER DRAWING	SCALE 尺度 8:1 SHEET 1 of 1 REV D2