



Chipsmall Limited consists of a professional team with an average of over 10 year of expertise in the distribution of electronic components. Based in Hongkong, we have already established firm and mutual-benefit business relationships with customers from,Europe,America and south Asia,supplying obsolete and hard-to-find components to meet their specific needs.

With the principle of “Quality Parts,Customers Priority,Honest Operation,and Considerate Service”,our business mainly focus on the distribution of electronic components. Line cards we deal with include Microchip,ALPS,ROHM,Xilinx,Pulse,ON,Everlight and Freescale. Main products comprise IC,Modules,Potentiometer,IC Socket,Relay,Connector.Our parts cover such applications as commercial,industrial, and automotives areas.

We are looking forward to setting up business relationship with you and hope to provide you with the best service and solution. Let us make a better world for our industry!



Contact us

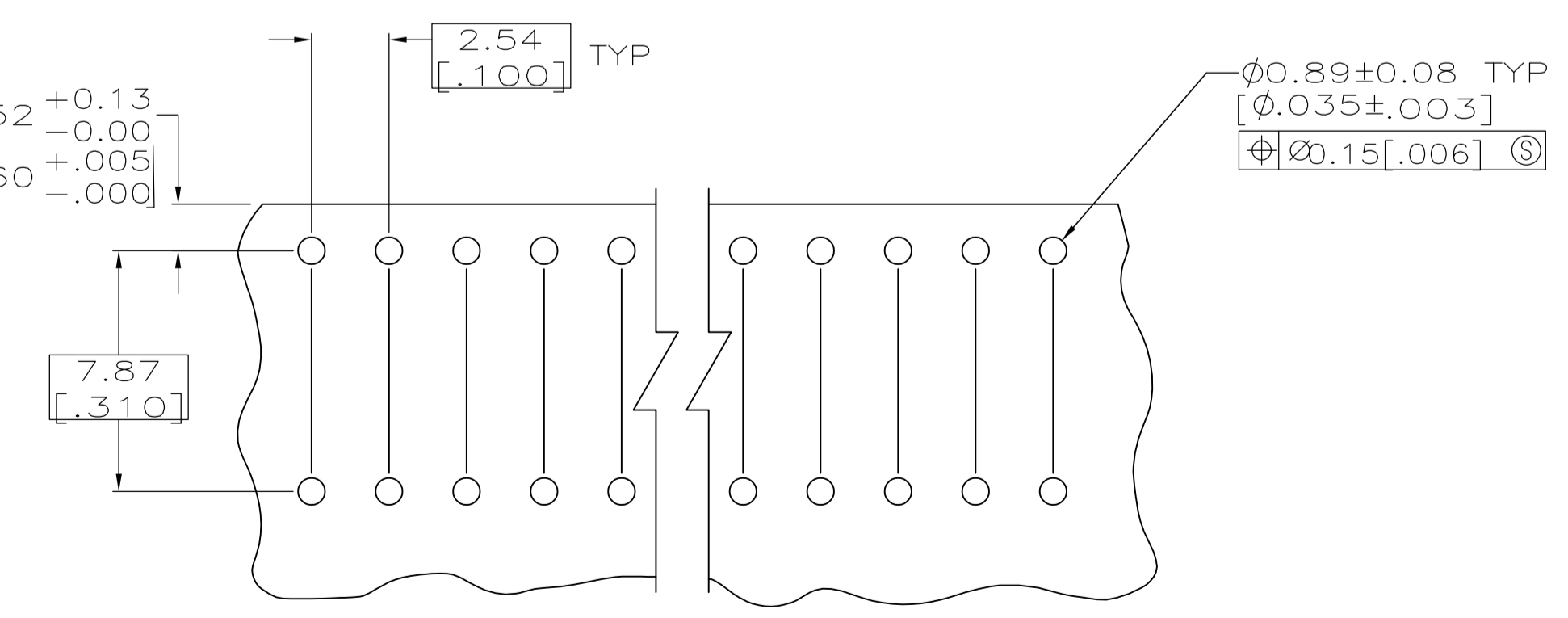
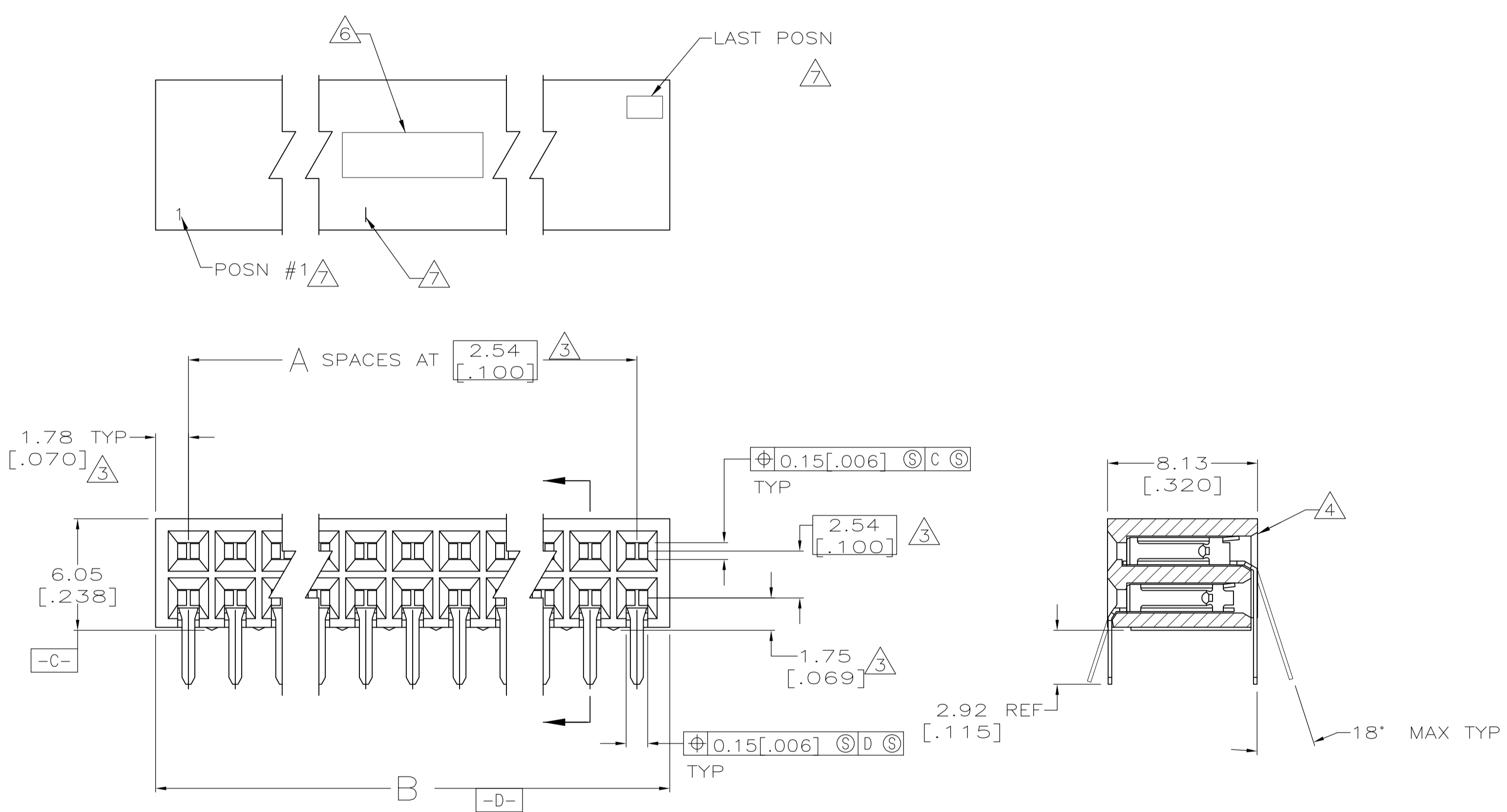
Tel: +86-755-8981 8866 Fax: +86-755-8427 6832

Email & Skype: info@chipsmall.com Web: www.chipsmall.com

Address: A1208, Overseas Decoration Building, #122 Zhenhua RD., Futian, Shenzhen, China



1. QUALITY CONFORMANCE INSPECTION PER MIL-C-55302 (GROUP A, B & C).
2. PACKAGED PER MIL-C-55302
3. THESE DIMENSIONS PERTAIN TO CAVITY CENTERLINES ONLY, NOT TO CONTACT LOCATIONS.
4. SLOT OPTIONAL AT INDICATED AREA OF HOUSING.
5. CONTACTS: 0.00127[.000050] GOLD OVER 0.000762 TO 0.00381[.000030 TO .000150] NICKEL ENTIRE CONTACT.
6. MARKED IN APPROX AREA SHOWN
 EXAMPLE: AMP, AMP PART NUMBER
 DATE CODE MILITARY PART NUMBER
 HOUSINGS SMALLER THAN 20 POSITION ARE MARKED AS FOLLOWS:
 10 THRU 18 POSN - AMP, DATE CODE & MILITARY PART NUMBER.
 8, 6 AND 4 POSN - AMP TRADEMARKED ONLY (MAY BE ROTATED 90 TO FIT).
7. CHARACTERS MARKED IN AREA SHOWN, EVERY FIFTH POSITION MARKED WITH A BAR
8. MARKED "CSA" LOGO ON HOUSING.



| | | | | | | | | | |
|----------------------|-------------------|----|------------|-------------|----------------------|------------------|----|------------|-------------|
| M55302/128-DR1B | 166.12 [6.540] | 64 | 130 | 6-87962-4 | M55302/128-BR1B | 84.84 [3.340] | 32 | 66 | 3-87962-2 |
| M55302/128-DQ1B | 163.58 [6.440] | 63 | 128 | 6-87962-3 | M55302/128-BQ1B | 82.30 [3.240] | 31 | 64 | 3-87962-1 |
| M55302/128-DP1B | 161.04 [6.340] | 62 | 126 | 6-87962-2 | M55302/128-BP1B | 79.76 [3.140] | 30 | 62 | 3-87962-0 |
| M55302/128-DN1B | 158.50 [6.240] | 61 | 124 | 6-87962-1 | M55302/128-BN1B | 77.22 [3.040] | 29 | 60 | 2-87962-9 |
| M55302/128-DM1B | 155.96 [6.140] | 60 | 122 | 6-87962-0 | M55302/128-BM1B | 74.68 [2.940] | 28 | 58 | 2-87962-8 |
| M55302/128-DL1B | 153.42 [6.040] | 59 | 120 | 5-87962-9 | M55302/128-BL1B | 72.14 [2.840] | 27 | 56 | 2-87962-7 |
| M55302/128-DK1B | 150.88 [5.940] | 58 | 118 | 5-87962-8 | M55302/128-BK1B | 69.60 [2.740] | 26 | 54 | 2-87962-6 |
| M55302/128-DJ1B | 148.34 [5.840] | 57 | 116 | 5-87962-7 | M55302/128-BJ1B | 67.06 [2.640] | 25 | 52 | 2-87962-5 |
| M55302/128-DH1B | 145.80 [5.740] | 56 | 114 | 5-87962-6 | M55302/128-BH1B | 64.52 [2.540] | 24 | 50 | 2-87962-4 |
| M55302/128-DG1B | 143.26 [5.640] | 55 | 112 | 5-87962-5 | M55302/128-BG1B | 61.98 [2.440] | 23 | 48 | 2-87962-3 |
| M55302/128-DF1B | 140.72 [5.540] | 54 | 110 | 5-87962-4 | M55302/128-BF1B | 59.44 [2.340] | 22 | 46 | 2-87962-2 |
| M55302/128-DE1B | 138.18 [5.440] | 53 | 108 | 5-87962-3 | M55302/128-BE1B | 56.90 [2.240] | 21 | 44 | 2-87962-1 |
| M55302/128-DD1B | 135.64 [5.340] | 52 | 106 | 5-87962-2 | M55302/128-BD1B | 54.36 [2.140] | 20 | 42 | 2-87962-0 |
| M55302/128-DC1B | 133.10 [5.240] | 51 | 104 | 5-87962-1 | M55302/128-BC1B | 51.82 [2.040] | 19 | 40 | 1-87962-9 |
| M55302/128-DB1B | 130.56 [5.140] | 50 | 102 | 5-87962-0 | M55302/128-BB1B | 49.28 [1.940] | 18 | 38 | 1-87962-8 |
| M55302/128-DA1B | 128.02 [5.040] | 49 | 100 | 4-87962-9 | M55302/128-BA1B | 46.74 [1.840] | 17 | 36 | 1-87962-7 |
| M55302/128-CR1B | 125.48 [4.940] | 48 | 98 | 4-87962-8 | M55302/128-AR1B | 44.20 [1.740] | 16 | 34 | 1-87962-6 |
| M55302/128-CQ1B | 122.94 [4.840] | 47 | 96 | 4-87962-7 | M55302/128-AQ1B | 41.66 [1.640] | 15 | 32 | 1-87962-5 |
| M55302/128-CP1B | 120.40 [4.740] | 46 | 94 | 4-87962-6 | M55302/128-AP1B | 39.12 [1.540] | 14 | 30 | 1-87962-4 |
| M55302/128-CN1B | 117.86 [4.640] | 45 | 92 | 4-87962-5 | M55302/128-AN1B | 36.58 [1.440] | 13 | 28 | 1-87962-3 |
| M55302/128-CM1B | 115.32 [4.540] | 44 | 90 | 4-87962-4 | M55302/128-AM1B | 34.04 [1.340] | 12 | 26 | 1-87962-2 |
| M55302/128-CL1B | 112.78 [4.440] | 43 | 88 | 4-87962-3 | M55302/128-AL1B | 31.50 [1.240] | 11 | 24 | 1-87962-1 |
| M55302/128-CK1B | 110.24 [4.340] | 42 | 86 | 4-87962-2 | M55302/128-AK1B | 28.96 [1.140] | 10 | 22 | 1-87962-0 |
| M55302/128-CJ1B | 107.70 [4.240] | 41 | 84 | 4-87962-1 | M55302/128-AJ1B | 26.42 [1.040] | 9 | 20 | 87962-9 |
| M55302/128-CH1B | 105.16 [4.140] | 40 | 82 | 4-87962-0 | M55302/128-AH1B | 23.88 [.940] | 8 | 18 | 87962-8 |
| M55302/128-CG1B | 102.62 [4.040] | 39 | 80 | 3-87962-9 | M55302/128-AG1B | 21.34 [.840] | 7 | 16 | 87962-7 |
| M55302/128-CF1B | 100.08 [3.940] | 38 | 78 | 3-87962-8 | M55302/128-AF1B | 18.80 [.740] | 6 | 14 | 87962-6 |
| M55302/128-CE1B | 97.54 [3.840] | 37 | 76 | 3-87962-7 | M55302/128-AE1B | 16.26 [.640] | 5 | 12 | 87962-5 |
| M55302/128-CD1B | 95.00 [3.740] | 36 | 74 | 3-87962-6 | M55302/128-AD1B | 13.72 [.540] | 4 | 10 | 87962-4 |
| M55302/128-CC1B | 92.46 [3.640] | 35 | 72 | 3-87962-5 | M55302/128-AC1B | 11.18 [.440] | 3 | 8 | 87962-3 |
| M55302/128-CB1B | 89.92 [3.540] | 34 | 70 | 3-87962-4 | M55302/128-AB1B | 8.64 [.340] | 2 | 6 | 87962-2 |
| M55302/128-CA1B | 87.38 [3.440] | 33 | 68 | 3-87962-3 | M55302/128-AA1B | 6.10 [.240] | 1 | 4 | 87962-1 |
| MILITARY PART NUMBER | B | A | NO OF POSN | PART NUMBER | MILITARY PART NUMBER | B | A | NO OF POSN | PART NUMBER |

THIS DRAWING IS A CONTROLLED DOCUMENT. **Tyco Electronics** Tyco Electronics Corporation Harrisburg, PA 17105-3608

| | | | | | | | |
|-------------------------|--|-----------|-----------|------------------|--------------------|------------------------------|------------|
| DIMENSIONS: mm [INCHES] | TOLERANCES UNLESS OTHERWISE SPECIFIED: | 0 PLC ± - | 1 PLC ± - | 2 PLC ± - | 3 PLC ± 0.25[.010] | 4 PLC ± - | ANGLES ± - |
| MATERIAL HOUSING: | FINISH | WEIGHT | | CUSTOMER DRAWING | | SCALE 5:1 SHEET 1 OF 1 REV J | |

APVD: DIRK DIXON
 NAME: DIRK DIXON
 PRODUCT SPEC: HOUSING ASSEMBLY, MOD II, DOUBLE ROW, IN LINE 2.54[.100] SHORT POINT CONTACTS
 SIZE: A1
 CAGE CODE: 00779
 DRAWING NO: 87962