



Chipsmall Limited consists of a professional team with an average of over 10 year of expertise in the distribution of electronic components. Based in Hongkong, we have already established firm and mutual-benefit business relationships with customers from,Europe,America and south Asia,supplying obsolete and hard-to-find components to meet their specific needs.

With the principle of “Quality Parts,Customers Priority,Honest Operation,and Considerate Service”,our business mainly focus on the distribution of electronic components. Line cards we deal with include Microchip,ALPS,ROHM,Xilinx,Pulse,ON,Everlight and Freescale. Main products comprise IC,Modules,Potentiometer,IC Socket,Relay,Connector.Our parts cover such applications as commercial,industrial, and automotives areas.

We are looking forward to setting up business relationship with you and hope to provide you with the best service and solution. Let us make a better world for our industry!



## Contact us

Tel: +86-755-8981 8866 Fax: +86-755-8427 6832

Email & Skype: info@chipsmall.com Web: www.chipsmall.com

Address: A1208, Overseas Decoration Building, #122 Zhenhua RD., Futian, Shenzhen, China



4

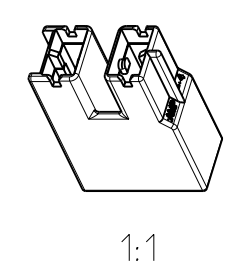
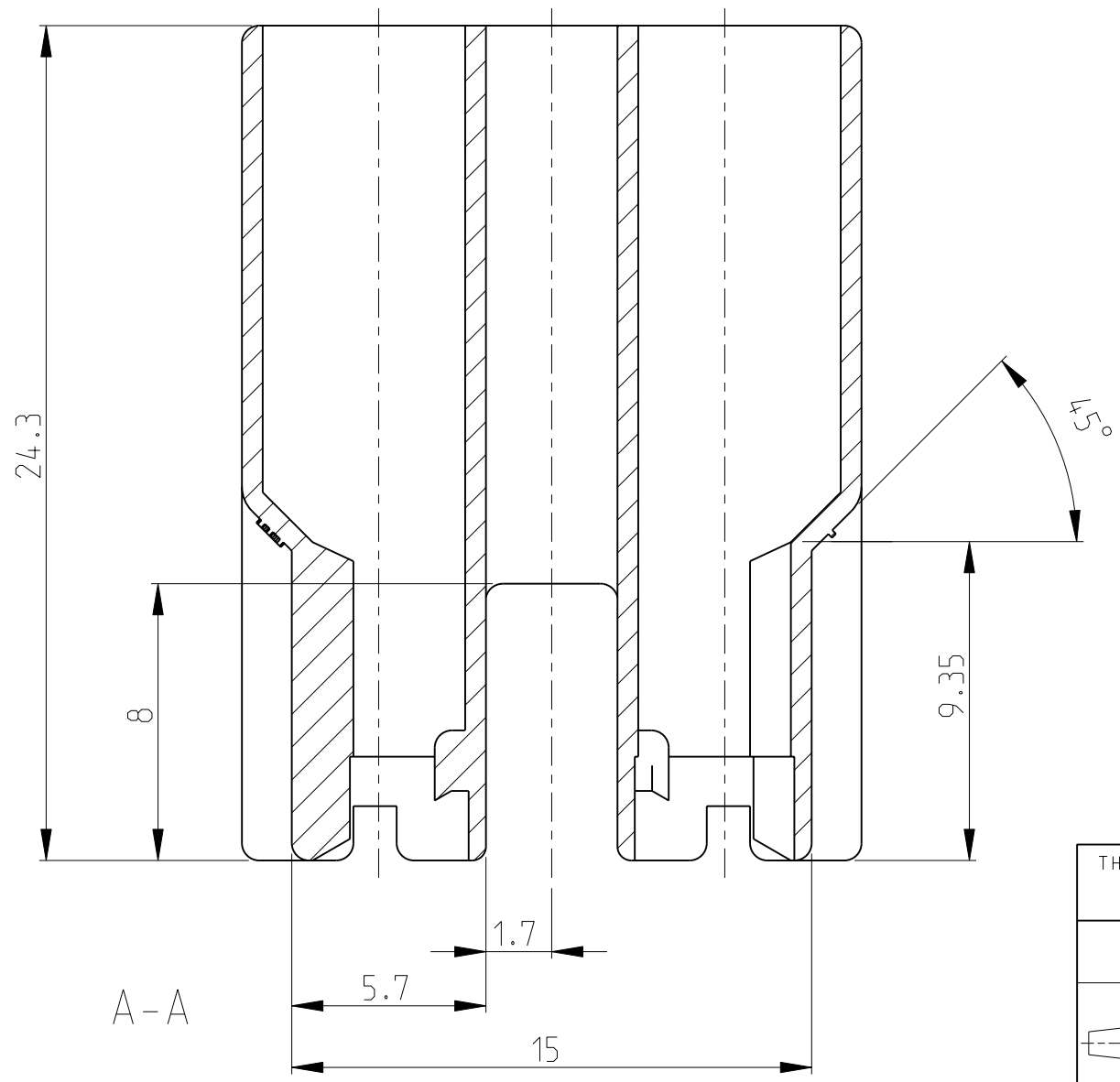
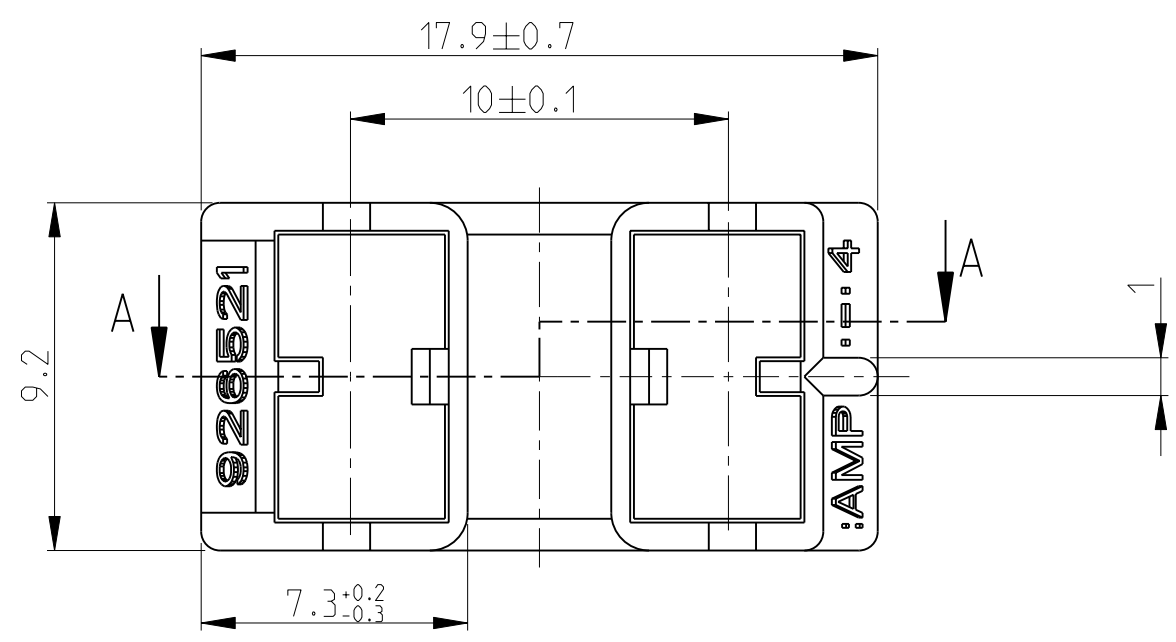
3

2


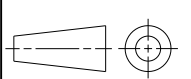
1

THIS DRAWING IS UNPUBLISHED. RELEASED FOR PUBLICATION 2003  
 © COPYRIGHT 2003 ALL RIGHTS RESERVED.

LOC	DIST	REVISIONS			
P	LTR	DESCRIPTION	DATE	DWN	APVD
A1	-				
	L	NEW CAD DRAWING CREATED	21SEP2004	Abr	C.G.
	L1	1-926521-2 ADDED	08FEB2006	Abr	Goep
	L2	ECR-10-026307	16JUN2011	KK	HMR



COLOUR	MATERIAL	PART NUMBER	REV
BLACK	PA 6.6 (V-0)	1-926521-2	A
BLACK	PA 6.6 HS-LC	1-926521-1	B
BROWN RAL 8003	PA 6.6	0-926521-9	L
WHITE RAL 9001	PA 6.6	0-926521-8	L
BLUE RAL 5012	PA 6.6	0-926521-7	L
YELLOW RAL 1018	PA 6.6	0-926521-6	L
GREY RAL 7037	PA 6.6	0-926521-5	L
RED RAL 3000	PA 6.6	0-926521-4	L
<del>GREEN RAL 6011</del>	PA 6.6	<del>0-926521-3</del>	L
BLACK	PA 6.6	0-926521-2	L
NATURAL	PA 6.6	0-926521-1	L

THIS DRAWING IS A CONTROLLED DOCUMENT.		DWN 21SEP2004 Abraham.G.	 TE Connectivity	
DIMENSIONS: mm		CHK 22SEP2004 Göppel.C.		
TOLERANCES UNLESS OTHERWISE SPECIFIED:		APVD 23SEP2004 Bleicher.M.	NAME 2 pol. Pos.Lock Gehaeuse H-Form 2 POS: POS.LOCK HOUSING H-TYPE	
 0 PLC ±0.2 1 PLC ±0.2 2 PLC ±0.2 3 PLC ±0.2 4 PLC ±0.2 ANGLES ±1°		PRODUCT SPEC -	RESTRICTED TO -	
MATERIAL -		APPLICATION SPEC -	SIZE A3	CAGE CODE 00779
FINISH -		WEIGHT 1.15 g	DRAWING NO ©-926521	
		CUSTOMER DRAWING	SCALE 5:1	SHEET 1 OF 1
				REV L2