



Chipsmall Limited consists of a professional team with an average of over 10 year of expertise in the distribution of electronic components. Based in Hongkong, we have already established firm and mutual-benefit business relationships with customers from,Europe,America and south Asia,supplying obsolete and hard-to-find components to meet their specific needs.

With the principle of "Quality Parts,Customers Priority,Honest Operation,and Considerate Service",our business mainly focus on the distribution of electronic components. Line cards we deal with include Microchip,ALPS,ROHM,Xilinx,Pulse,ON,Everlight and Freescale. Main products comprise IC,Modules,Potentiometer,IC Socket,Relay,Connector.Our parts cover such applications as commercial,industrial, and automotives areas.

We are looking forward to setting up business relationship with you and hope to provide you with the best service and solution. Let us make a better world for our industry!



Contact us

Tel: +86-755-8981 8866 Fax: +86-755-8427 6832

Email & Skype: info@chipsmall.com Web: www.chipsmall.com

Address: A1208, Overseas Decoration Building, #122 Zhenhua RD., Futian, Shenzhen, China



eDEV-BF5xx

Blackfin® Development Board

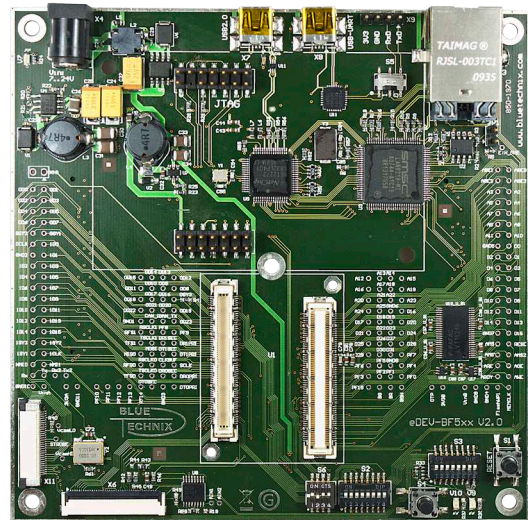
The eDEV-BF5xx Development Board is a feature rich, low cost rapid development platform designed to decrease time-to-market of customized applications. It supports Bluetechnix' powerful Blackfin® based Core Modules like the latest eCM-BF561. The development board provides all interfaces on dedicated connectors and has all Core Module pins routed to solder pads which can be easily accessed by the developers. This allows customers to connect their own hardware and enables comfortable measurements. The eDEV-BF5xx supports the latest debugging interface from Analog Devices - ADI-SADA (Analog Devices Stand Alone Debug Agent) and features the latest extender socket (bottom side) for upcoming extender boards.

Hardware Features

SUPPORTED CORE MODULES*	eCM-BF561
USB TO UART CONVERTER	✓
ETHERNET CONNECTOR	✓
USB 2.0 CONNECTOR	✓
CAMERA CONNECTOR	BLT-ISM-Connector for ISM
TFT-DISPLAY CONNECTOR	EDT G- TFT Family Concept
SUPPORTED TFT-DISPLAYS	Various EDT G- TFTs (3.5" - 7.0")
ADI-SADA CONNECTOR	✓
SD CARD SOCKET	✓
ADDITIONAL FEATURES	All pins of the connectors are available as solder pads
DIMENSIONS	120x120mm

*Further CMs are supported by adapters.

Goto: <http://www.bluetechnix.com/goto/eDEV-bf5xx>



Related Packages/Products

- » eCM-BF561 and eCM-BF561 Industrial
- » Blackfin Evaluation Starter Package with eCM-BF561

Ordering Information

Order No.	Info
100-2342-2	eDEV-BF5xx Enhanced Blackfin Development Board without Debug Agent (SADA)
100-1214-1	eCM-BF561-C-C-Q25S128F32 (eCM-BF561)
100-1215-1	eCM-BF561-C-I-Q25S128F32
100-3400	Blackfin Evaluation Starter Package with eCM-BF561

Package content

- » eDEV-BF5xx
- » DC power supply
- » USB device cable

BLUETECHNIX MECHATRONISCHE SYSTEME GMBH

Waidhausenstrasse 3/19
1140 Wien, Austria
www.bluetechnix.com

Tel.: +43 (1) 9142091 x 0
Fax.: +43 (1) 9142091 x 99
Email: office@bluetechnix.at

