



Chipsmall Limited consists of a professional team with an average of over 10 year of expertise in the distribution of electronic components. Based in Hongkong, we have already established firm and mutual-benefit business relationships with customers from,Europe,America and south Asia,supplying obsolete and hard-to-find components to meet their specific needs.

With the principle of “Quality Parts,Customers Priority,Honest Operation,and Considerate Service”,our business mainly focus on the distribution of electronic components. Line cards we deal with include Microchip,ALPS,ROHM,Xilinx,Pulse,ON,Everlight and Freescale. Main products comprise IC,Modules,Potentiometer,IC Socket,Relay,Connector.Our parts cover such applications as commercial,industrial, and automotives areas.

We are looking forward to setting up business relationship with you and hope to provide you with the best service and solution. Let us make a better world for our industry!



## Contact us

Tel: +86-755-8981 8866 Fax: +86-755-8427 6832

Email & Skype: info@chipsmall.com Web: www.chipsmall.com

Address: A1208, Overseas Decoration Building, #122 Zhenhua RD., Futian, Shenzhen, China



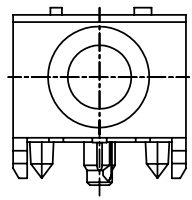
1

2

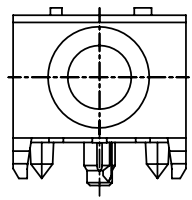
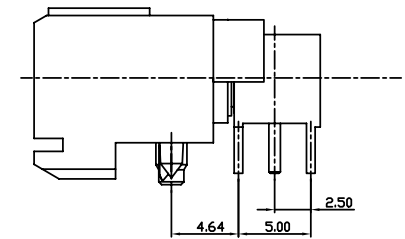
3

4

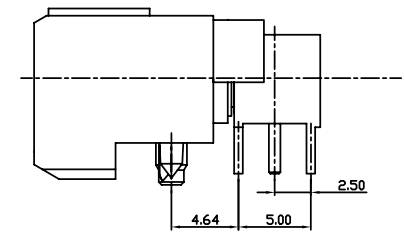
PRODUCT NUMBER	STYLE
10012562-001	STYLE A
10012562-001LF	
10012562-002	STYLE B STRONG HOUSING
10012562-002LF	



STYLE A

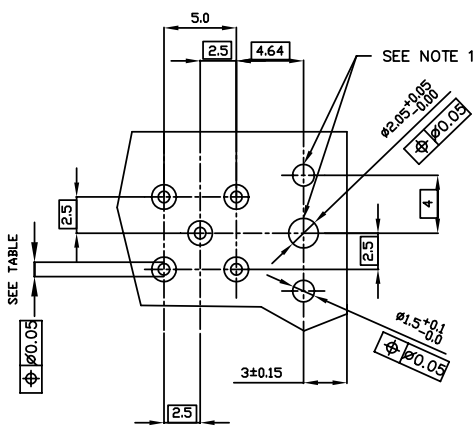


STYLE B



NOTES:

- ① INDICATED HOLES ARE TO BE UNPLATED
- ② FOR DIMENSIONAL AND PRODUCT INFORMATION CONCERNING P/N 71634-103 REFER TO DRAWING 71634.
- ③ FOR DIMENSIONAL AND PRODUCT INFORMATION CONCERNING P/N 72718-001A OR 72718-002A REFER TO DRAWING 72718.
- 4. ADD LF SUFFIX AT THE END OF THE PART NUMBER FOR LEAD FREE OPTION
- 5. THIS PRODUCT MEETS EUROPEAN UNION DIRECTIVES AND OTHER COUNTRY REGULATION AS DESCRIBED IN GS-22-008



RECOMMENDED HOLE PATTERN, COMPONENT SIDE.

PRESS FIT HOLES	
HOLE DIAMETER AFTER PLATING	0.65 - 0.80
DRILLED HOLE	0.81 - 0.86 (0.85 DRILL)
COPPER PLATING	0.025 MIN
TIN PLATING	0.005 - 0.015



Copyright FCI.

www.fciconnect.com		surface ISO 1302	tolerance ISO 406 ISO 1101	projection MM
		TOLERANCES UNLESS OTHERWISE SPECIFIED		
Dr	C.DAILY	07/29/02	ANGULAR	size A4
Eng	M.GRAY	07/29/02	LINEAR	Scale 1:1
Chr	M.GRAY	07/29/02	0° ±2.0°	ECN N10-0381
Appr	M.GRAY	07/29/02	Product family	Spec ref
FCI		title METRAL R/A COAX RECEPTACLE KIT		Rev. F
catalog no		CUSTOMER		sheet 1 of 1
		dwg no 10012562		

rev	ecn no	dr	date
A	V21222	CGD	07/29/02
B	V21619	TAB	10/10/02
C	M06-0239	AGS	06/15/06
D	M09-0129	MHT	08/26/09
E	N10-0055	R.B	02/24/10
F	N10-0381	A.ZH	11/09/10

1

2

3 PDM: Rev:F

STATUS: Released

4 Printed: Nov 12, 2010