



Chipsmall Limited consists of a professional team with an average of over 10 year of expertise in the distribution of electronic components. Based in Hongkong, we have already established firm and mutual-benefit business relationships with customers from,Europe,America and south Asia,supplying obsolete and hard-to-find components to meet their specific needs.

With the principle of “Quality Parts,Customers Priority,Honest Operation,and Considerate Service”,our business mainly focus on the distribution of electronic components. Line cards we deal with include Microchip,ALPS,ROHM,Xilinx,Pulse,ON,Everlight and Freescale. Main products comprise IC,Modules,Potentiometer,IC Socket,Relay,Connector.Our parts cover such applications as commercial,industrial, and automotives areas.

We are looking forward to setting up business relationship with you and hope to provide you with the best service and solution. Let us make a better world for our industry!



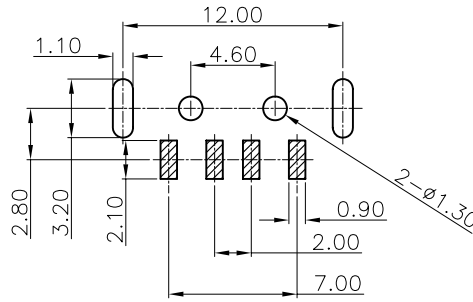
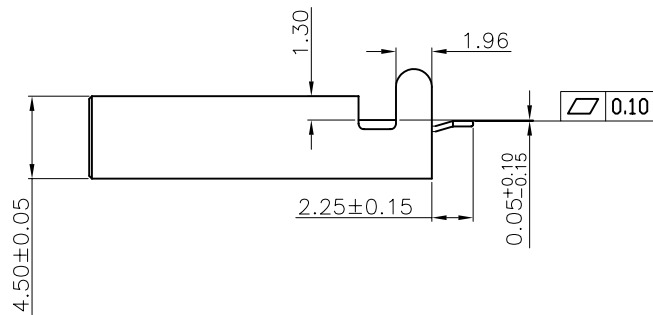
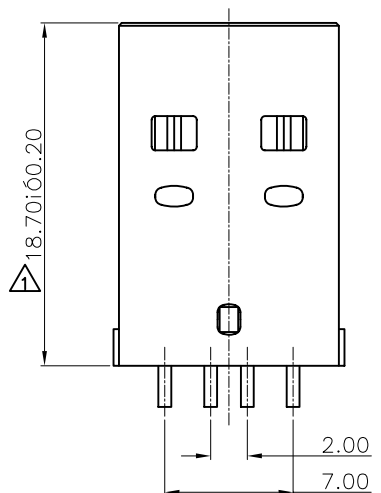
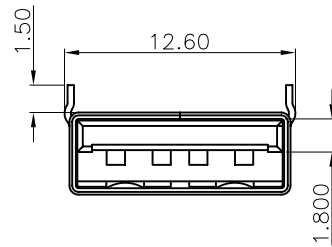
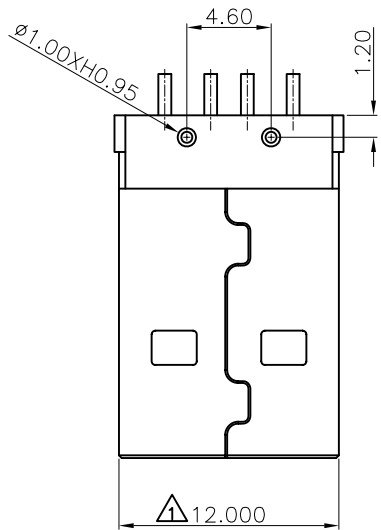
Contact us

Tel: +86-755-8981 8866 Fax: +86-755-8427 6832

Email & Skype: info@chipsmall.com Web: www.chipsmall.com

Address: A1208, Overseas Decoration Building, #122 Zhenhua RD., Futian, Shenzhen, China





RECOMMENDED PCB LAYOUT

NOTE:
 MATERIAL:
 HOUSING:PBT+30%G.F UL 94V-0
 CONTACT:BRASS
 SHELL:SPCC
 PLATING:
 CONTACT: GOLD AND TIN OVER NICKEL PLATING
 SHELL: NICKEL OVER ALL PLATING
 SPECIFICATION:
 CURRENT-MAX[AMPS]1.5A
 VOLTAGE-MAX[VOLTS]:30V
 WITHSTANDING VOLTAGE:500V AC
 CONTACT RESISTANCE[OHMS]:30MΩ MIN
 INSULATION RESISTANCE[OHMS]:1000MΩ MIN
 ENVIRONMENTAL:
 TEMPERATURE RANGE:-40°C TO+105°C
 PART NO.:

08/09/26	SYSTEM		變更尺寸	△	A1
08/05/27	SYSTEM		NEW DWG		A0
DATE	DR.BY	ECN.NO.	DESCRIPTION	MARK	VER.
-TOLERANCES- UNLESS OTHERWISE SPECIFIED 公差參考表			CnC Tech,LLC		
					TITLE: USB 4P A/M SMT H=6.00mm 成品針長2.25mm
X.X	±0.30	X.X°	±3.00°	APPD:	PRODUCT NO: 1002-016-01101
X.XX	±0.15	X.XX°	±1.00°	CHECK:	DATE SCALE UNIT TYPE PAGE
X.XXX	±0.100	X.XXX°	±0.500°	DRAW:	2008.09.26 1:1 mm CD 1/1