



Chipsmall Limited consists of a professional team with an average of over 10 year of expertise in the distribution of electronic components. Based in Hongkong, we have already established firm and mutual-benefit business relationships with customers from,Europe,America and south Asia,supplying obsolete and hard-to-find components to meet their specific needs.

With the principle of “Quality Parts,Customers Priority,Honest Operation,and Considerate Service”,our business mainly focus on the distribution of electronic components. Line cards we deal with include Microchip,ALPS,ROHM,Xilinx,Pulse,ON,Everlight and Freescale. Main products comprise IC,Modules,Potentiometer,IC Socket,Relay,Connector.Our parts cover such applications as commercial,industrial, and automotives areas.

We are looking forward to setting up business relationship with you and hope to provide you with the best service and solution. Let us make a better world for our industry!



## Contact us

Tel: +86-755-8981 8866 Fax: +86-755-8427 6832

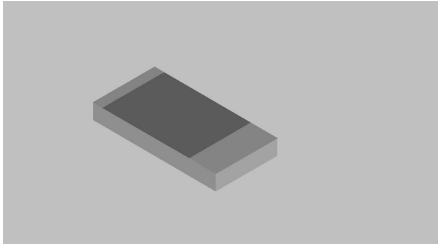
Email & Skype: info@chipsmall.com Web: www.chipsmall.com

Address: A1208, Overseas Decoration Building, #122 Zhenhua RD., Futian, Shenzhen, China





### Surface Mount Termination 10 Watts, 50Ω



#### General Specifications

<b>Resistive Element</b>	Thick film
<b>Substrate</b>	Aluminum nitride ceramic
<b>Terminals</b>	Tin/Lead, 90/10 over nickel

#### Electrical Specifications

<b>Resistance Range:</b>	50 ohms, $\pm 2\%$
<b>Frequency Range;</b>	DC – 2.0 GHz
<b>Power:</b>	10 Watts
<b>VSWR</b>	1.25:1 DC – 2.0 GHz

**Note:** Tolerance is  $\pm 0.010"$ , unless otherwise specified. Designed to meet or exceed applicable portions of MIL-E-5400. Operating temperature is  $-55^{\circ}\text{C}$  to  $125^{\circ}\text{C}$  (see chart for derating temperatures).

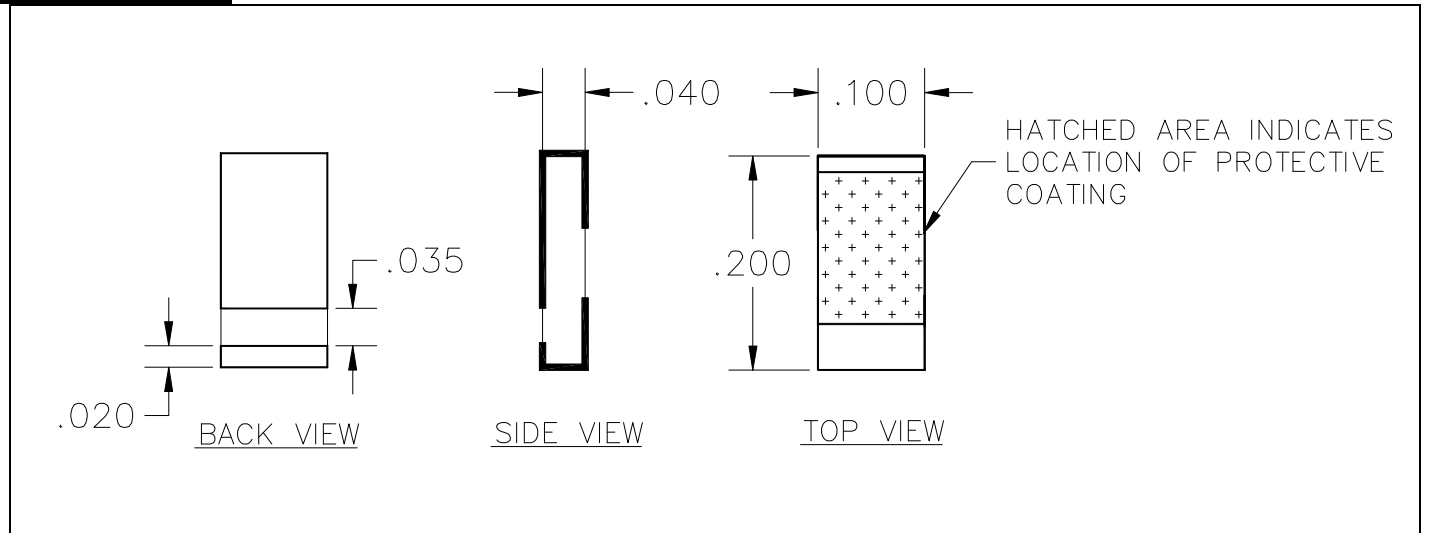
All dimensions in inches.

Specifications subject to change with out notice.

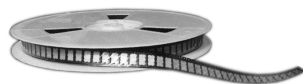
#### Features:

- DC – 2.0 GHz
- 10 Watts
- AlN Ceramic
- Non-Nichrome Resistive Element
- Low VSWR
- 100% Tested

#### Outline Drawing

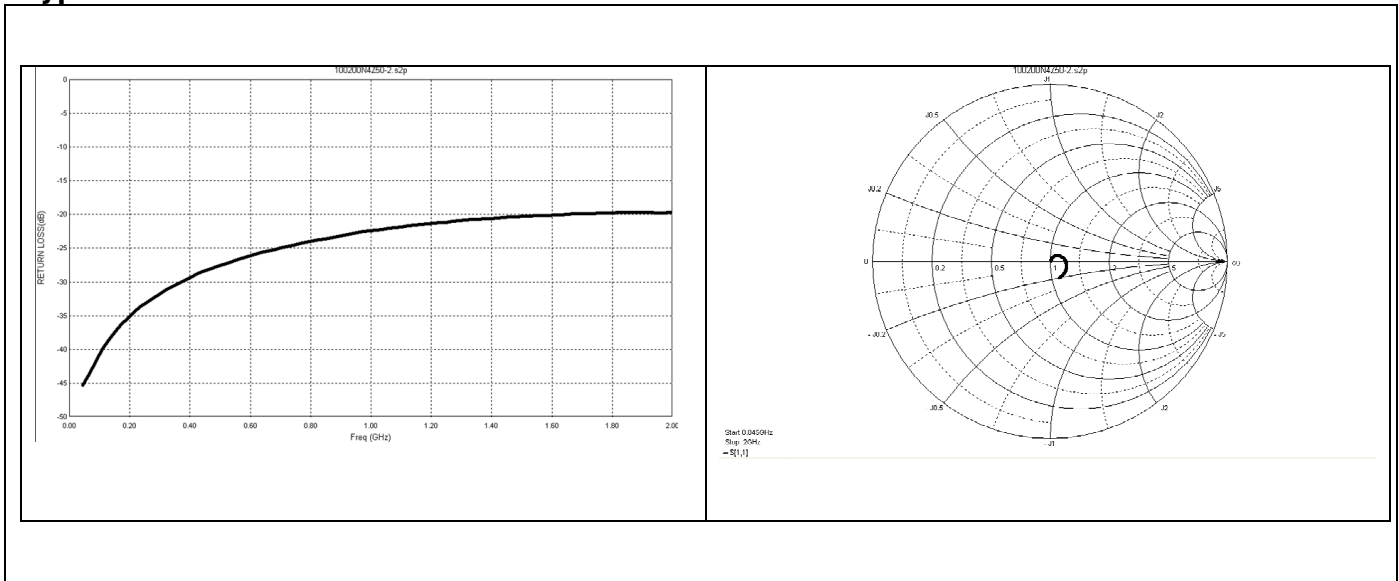


100200N4Z50-2 (097) Rev A

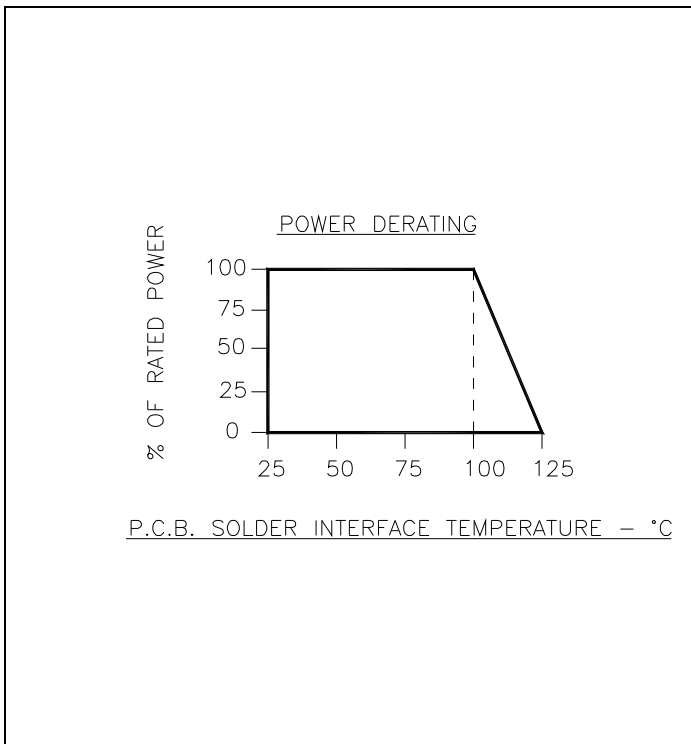




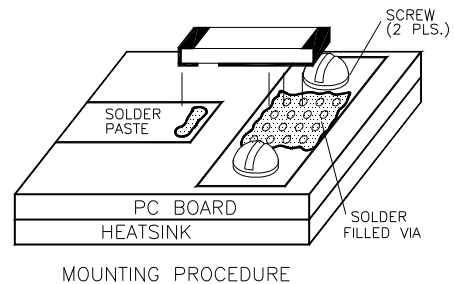
### Typical Performance:



### Power De-rating:



### Mounting Footprint and Procedure:

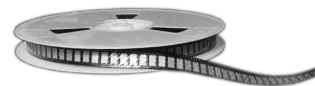


- MOUNTING PROCEDURE**
1. Solder part in place using 60/40 type solder with Temperature controlled iron (700°F).
  2. Drill thermal vias through PCB and fill with solder, such as 60/40 type.
  3. To ensure good thermal connectivity to heat sink, drill and tap heatsink and mount PCB board to heat sink using screws.

100200N4Z50-2 (097) Rev A

USA/Canada: (315) 432-8909  
 Toll Free: (800) 544-2414  
 Europe: +44 2392-232392

Available on Tape and Reel For Pick and Place Manufacturing.



**Anaren**  
 What'll we think of next?™