



Chipsmall Limited consists of a professional team with an average of over 10 year of expertise in the distribution of electronic components. Based in Hongkong, we have already established firm and mutual-benefit business relationships with customers from,Europe,America and south Asia,supplying obsolete and hard-to-find components to meet their specific needs.

With the principle of “Quality Parts,Customers Priority,Honest Operation,and Considerate Service”,our business mainly focus on the distribution of electronic components. Line cards we deal with include Microchip,ALPS,ROHM,Xilinx,Pulse,ON,Everlight and Freescale. Main products comprise IC,Modules,Potentiometer,IC Socket,Relay,Connector.Our parts cover such applications as commercial,industrial, and automotives areas.

We are looking forward to setting up business relationship with you and hope to provide you with the best service and solution. Let us make a better world for our industry!



Contact us

Tel: +86-755-8981 8866 Fax: +86-755-8427 6832

Email & Skype: info@chipsmall.com Web: www.chipsmall.com

Address: A1208, Overseas Decoration Building, #122 Zhenhua RD., Futian, Shenzhen, China



20 19 18 17 16 15 14 13 12 11 10 9 8 7 6 5 4 3 2 1

M

L

K

J

I

H

G

F

E

D

C

B

A

M

L

K

J

I

H

G

F

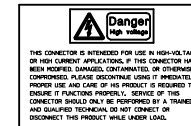
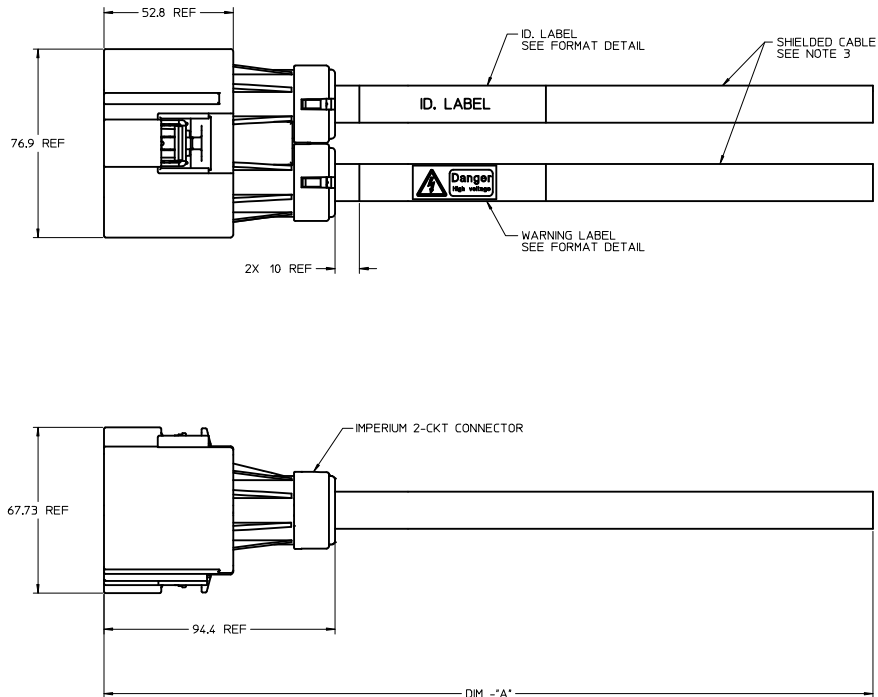
E

D

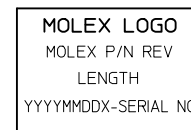
C

B

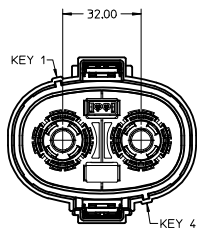
A



WARNING LABEL FORMAT



LABEL FORMAT
LAST LETTER OF DATE CODE 'X':
'D'= DAY SHIFT, 'N'= NIGHT SHIF




POLARIZATION "A"

NOTES:

1. MATERIAL: MAIN HOUSING: PBT UV STABILIZED, COLOR: ORANGE
POWER TERMINALS: COPPER
HVIL TERMINALS: COPPER ALLOY
2. FINISH: POWER TERMINALS: SILVER OVER NICKEL PLATING
HVIL TERMINALS: TIN OVER NICKEL WITH SELECT GOLD PLATING
3. CABLE FOR POWER TERMINALS: CHAMPLAIN EXRAD-FXS 1/0X WITH EMI SHIELD.
4. WIRE FOR HVIL TERMINALS: 18 GAGE TXL AUTOMOTIVE GRADE STRANDED WIRE.
5. PACKAGING SPECIFICATION: PK-100212-001.
6. PRODUCT SPECIFICATION: PS-171467-001.
7. LEAD FREE, NO ROHS EXEMPTIONS.
8. MATING CONNECTORS: 171467 SERIES HEADERS.

MOLEX MATERIAL NO.	DIM -"A"
100212-1001	500±10
100212-1011	1000±15
100212-1021	1500±20
100212-1031	2000±25
100212-1041	3000±30
100212-1051	14000±125
100212-1061	5000±50

Ⓢ

ADD 100212-1061 EC NO: PG2016-1167 TDRWNGSDHINI CHKDMLNG APPR:APATEL REV DESCRIPTION 2016/02/24 2016/02/29 2016/02/29	QUALITY SYMBOLS	GENERAL TOLERANCES (UNLESS SPECIFIED)		DIMENSION STYLE MM ONLY		SCALE 1:1	DESIGN UNITS METRIC	 THIRD ANGLE PROJECTION	TITLE IMPERIUM 2-CKT PLUG PIGTAIL POWER CABLE ASSY POL-A molex		
	▽=0	4 PLACES ±	mm	INCH	DRAWN BY HEMARTINEZ	DATE 2013/08/12	DOCUMENT NO. SD-100212-001				
	▽=0	3 PLACES ±	mm	INCH	CHECKED BY JJPWLICKI	DATE 2013/08/12					
	▽=0	2 PLACES ±	0.13	mm	APPROVED BY KMONROE	DATE 2013/11/04					
DRAFT WHERE APPLICABLE MUST REMAIN WITHIN DIMENSIONS		ANGULAR ± 3°		MATERIAL NO. SEE CHART		SHEET NO. 1 OF 2			THIS DRAWING CONTAINS INFORMATION THAT IS PROPRIETARY TO MOLEX INCORPORATED AND SHOULD NOT BE USED WITHOUT WRITTEN PERMISSION		

19 18 17 16 15 14 13 12 11 10 9 8 7 6 5 4 3 2 1

20 19 18 17 16 15 14 13 12 11 10 9 8 7 6 5 4 3 2 1

M

L

K

J

I

H

G

F

E

D

C

B

A

M

L

K

J

I

H

G

F

E

D

C

B

A

DATE	REV	DESCRIPTION
2013/11/04	A	INITIAL RELEASE
2015/03/11	B	ADDED POL-B OPTION TO CHART & VIEW. UPDATED LABEL FORMATS.
2015/03/25	C	ADDED NEW CABLE ASSY MAT. NO.'S, REVISED TOLERNACES, & ADDED SHEET 2 REV. TABLE.
2015/06/02	D	REMOVED POL-B OPTION PIGTAIL ASSY MAT. NO., & REMOVED POL-B VIEW.
2015/12/21	E	ADD P/N 100212-1051, CORRECT TO PS-171467-001
2016/02/24	F	ADD P/N 100212-1061

SEE REV. TABLE EC NO: IFG2016-1167 DRAWN: SUDHINI 2016/02/24 CHECKED: JING 2016/02/29 APPR. RATEL 2016/02/29	QUALITY SYMBOLS ▽=0 ▽=0 ▽=0	GENERAL TOLERANCES (UNLESS SPECIFIED) mm INCH 4 PLACES ± --- ± --- 3 PLACES ± --- ± --- 2 PLACES ± 0.13 ± --- 1 PLACE ± 0.25 ± --- 0 PLACE ± --- ± --- ANGULAR ± 3 ° DRAFT WHERE APPLICABLE MUST REMAIN WITHIN DIMENSIONS	DIMENSION STYLE MM ONLY		SCALE 1:1	DESIGN UNITS METRIC	THIRD ANGLE PROJECTION
			DRAWN BY DATE HEMART INEZ 2013/08/12		TITLE IMPERIUM 2-CKT PLUG PIGTAIL POWER CABLE ASSY POL-A		
			CHECKED BY DATE JJPAILI CKI 2013/08/12		molex		
			APPROVED BY DATE KMONROE 2013/11/04				
			MATERIAL NO.		DOCUMENT NO.		SHEET NO.
			SEE SHEET 1		SD-100212-001		2 OF 2
			THIS DRAWING CONTAINS INFORMATION THAT IS PROPRIETARY TO MOLEX INCORPORATED AND SHOULD NOT BE USED WITHOUT WRITTEN PERMISSION				

19 18 17 16 15 14 13 12 11 10 9 8 7 6 5 4 3 2 1