



Chipsmall Limited consists of a professional team with an average of over 10 year of expertise in the distribution of electronic components. Based in Hongkong, we have already established firm and mutual-benefit business relationships with customers from,Europe,America and south Asia,supplying obsolete and hard-to-find components to meet their specific needs.

With the principle of “Quality Parts,Customers Priority,Honest Operation,and Considerate Service”,our business mainly focus on the distribution of electronic components. Line cards we deal with include Microchip,ALPS,ROHM,Xilinx,Pulse,ON,Everlight and Freescale. Main products comprise IC,Modules,Potentiometer,IC Socket,Relay,Connector.Our parts cover such applications as commercial,industrial, and automotives areas.

We are looking forward to setting up business relationship with you and hope to provide you with the best service and solution. Let us make a better world for our industry!



Contact us

Tel: +86-755-8981 8866 Fax: +86-755-8427 6832

Email & Skype: info@chipsmall.com Web: www.chipsmall.com

Address: A1208, Overseas Decoration Building, #122 Zhenhua RD., Futian, Shenzhen, China





DigiCube

What to specify...

1. Pre-filter

2. Main filter

3. Interfacing Kit

Digikey Fume Extraction

Voltage	120V ±10%		
Vacuum Control	072190		
Wattage	0.107 kW		
Frequency	50 Hz / 60 Hz		
Cabinet height	365 mm		
Cabinet width (not inc hose)	290 mm		
Cabinet depth (not inc hose)	282 mm		
Cabinet weight (inc filters)	17 Kg		
Construction	Precision engineered units. High performance continuous run brushless motors. Quick and simple to relocate.		

1

Pre-filter Pad



Options:
F5

Code:
200225 (Pack of 4)

2

Main filter



Options:
HEPA/Chemical (std)

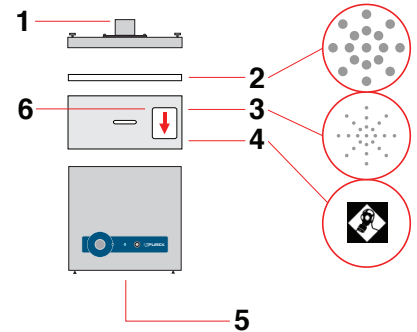
Code:
110536



Single arm system supplied with:

- 1 x Filter + pre-filter pad
- 1 x 51mm x 2m flexible hose [black]
- 2 x Connecting cuffs [black]
- 1 x Screwed bracket
- 1 x 38mm stainless steel flexible arm and valve + 38mm pen nib nozzle

Code:
100294



Legend:

- 1) Air inlet - 57mm ID - 62mm OD
- 2) Pre-filter.
- 3) Main Filter (HEPA location).
- 4) Main Filter (Carbon location).
- 5) Clean air returned to workplace.
- 6) Filter identification label.

Controls

Visual and Audible Filter Blocked Warning

Alerts the operator when a filter starts to block so that a replacement filter can be acquired and downtime can be avoided.

LED Filter Status

Green = Filter OK

Yellow = Filter nearly full

Red = Filter full, replacement required

System Features...

- Automatic electronic flow control - maintains a constant extraction rate even as the filter blocks
- Adjustable airflow
- VariColour filter blocked warning system
- Low capital and running costs
- Quick change pre-filters deliver longer filter life
- Submicronic (HEPA) filtration removes 99.997% of particles down to 0.3 microns
- Activated carbon filtration removes harmful gas
- Simple to install and quiet in operation
- Easy to relocate

Includes:

- 1 x Main filter
- 1 x Pre-filter pad
- 1 x Arm Kit
- 1 x Power cable