



Chipsmall Limited consists of a professional team with an average of over 10 year of expertise in the distribution of electronic components. Based in Hongkong, we have already established firm and mutual-benefit business relationships with customers from,Europe,America and south Asia,supplying obsolete and hard-to-find components to meet their specific needs.

With the principle of “Quality Parts,Customers Priority,Honest Operation,and Considerate Service”,our business mainly focus on the distribution of electronic components. Line cards we deal with include Microchip,ALPS,ROHM,Xilinx,Pulse,ON,Everlight and Freescale. Main products comprise IC,Modules,Potentiometer,IC Socket,Relay,Connector.Our parts cover such applications as commercial,industrial, and automotives areas.

We are looking forward to setting up business relationship with you and hope to provide you with the best service and solution. Let us make a better world for our industry!



Contact us

Tel: +86-755-8981 8866 Fax: +86-755-8427 6832

Email & Skype: info@chipsmall.com Web: www.chipsmall.com

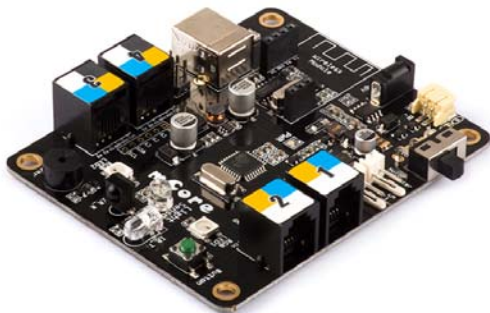
Address: A1208, Overseas Decoration Building, #122 Zhenhua RD., Futian, Shenzhen, China





mCore - Main Control Board for mBot

SKU: 10041 Weight: 47.00 Gram

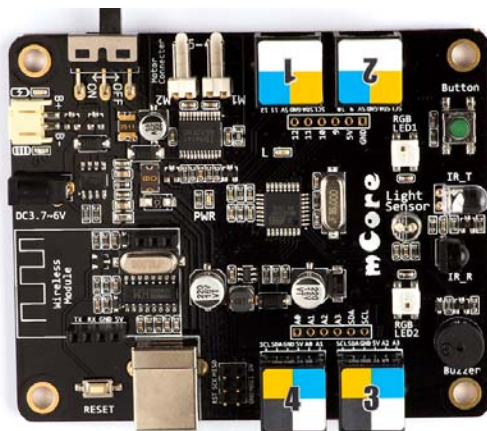
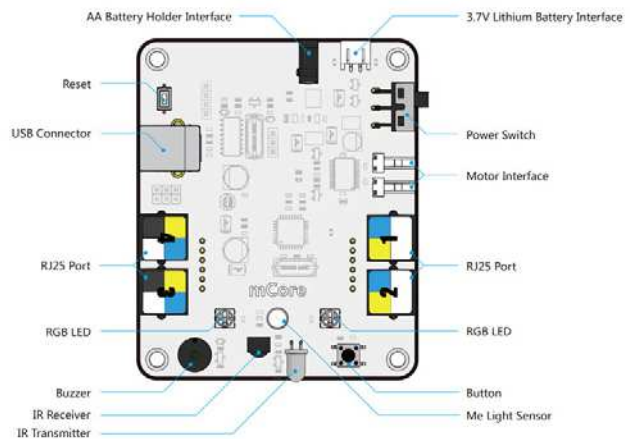


What is mCore?

mCore is an easy-to-use main control board specially designed for mBot. Based on Arduino Uno, mCore integrates various onboard sensors, such as buzzer, light sensor, RGB LED, etc., which provides you an easier way to start learning electronics.

Features

- Comes with Arduino and Makeblock Library for easy programming.
- Include various featured sensors, such as buzzer, light sensor, RGB LED, etc.
- On-board USB type B connector design for long-time use.
- Resettable fuse prevents the board from getting burn.
- Four color-labelled RJ25 connectors for easy wiring and expansion with more Arduino sensors.

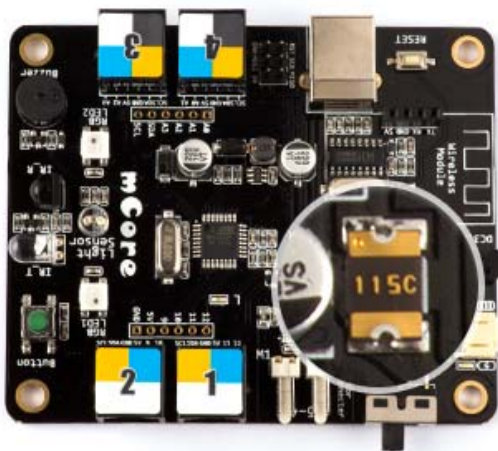
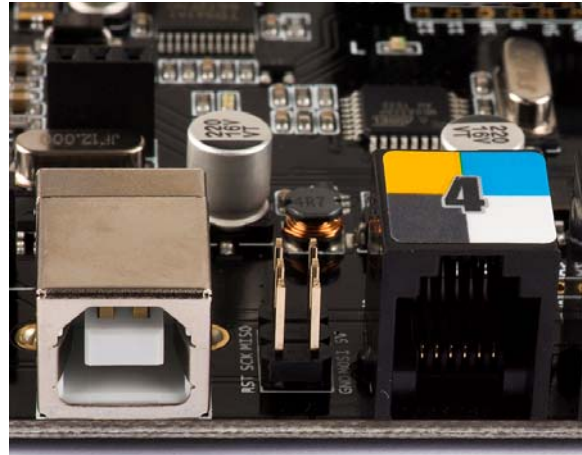


One Board, Various Sensors

mCore comes with various sensors for different applications, such as buzzer, light sensor, RGB LED, etc. It enables you to learn multiple basic electronic knowledge with this one board.

Durable USB Type B Connector

Instead of using normal Micro USB connector, on-board USB type B connector design can hold the wire firmly and ensure long-time use.

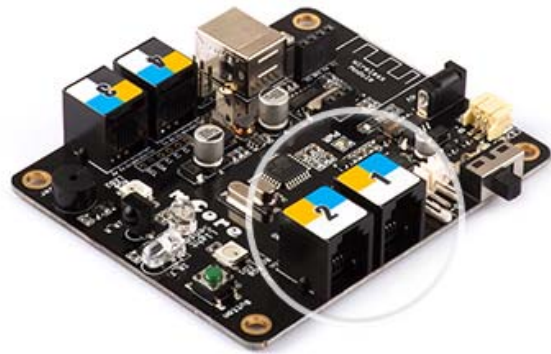


Resettable Fuse

The on-board resettable fuse can help protect the board against over-current faults. When over-current occurs, the resettable fuse will simply reset the operation of the board into normal status.

Easy Wiring

The RJ25 connectors in mCore is color-labelled, ensuring mCore can be wired in a really quick way. All the wiring is simple and very clean, thus more time can be spent on creating projects.

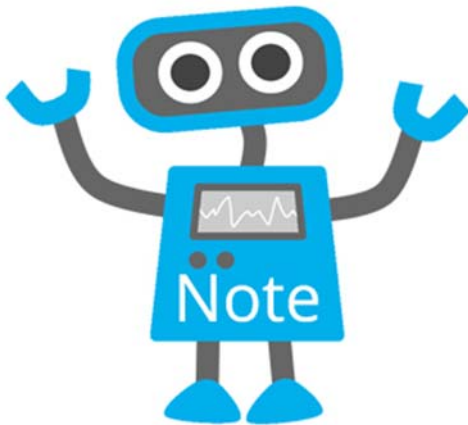
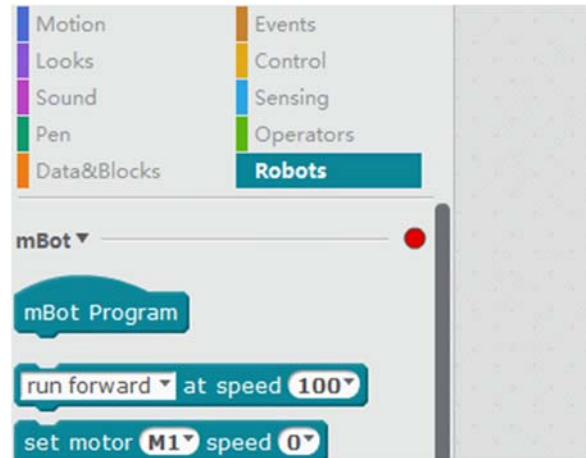


More Arduino

In addition to connecting to other electronic modules from Makeblock, the four RJ25 interfaces also support connecting to more Arduino sensors, hence you can explore more in electronics' world.

Work with mBlock

mCore for mBot is fully compatible with mBlock which is a graphical programming environment based on Scratch 2.0 Open Source Code. It makes programming projects and interactive applications easier through simply dragging and dropping function blocks.



Note:

The Bluetooth module is not included in mCore, you may need to buy it on your own, visit below website to buy: [Bluetooth Module for mBot](#).

Specifications	
Operating Voltage	3.7-6V DC power
Microcontroller	ATmega328
Product Dimension	90 x 79 x 18mm (3.54 x 3.11 x 0.71inch)
Package Dimension	110 x 150 x 10 mm (4.33 x 5.91 x 0.39inch)
Net Weight	43g (1.52oz)
Gross Weight	47g (1.66oz)
Package Content	1 x mCore