



Chipsmall Limited consists of a professional team with an average of over 10 year of expertise in the distribution of electronic components. Based in Hongkong, we have already established firm and mutual-benefit business relationships with customers from,Europe,America and south Asia,supplying obsolete and hard-to-find components to meet their specific needs.

With the principle of “Quality Parts,Customers Priority,Honest Operation,and Considerate Service”,our business mainly focus on the distribution of electronic components. Line cards we deal with include Microchip,ALPS,ROHM,Xilinx,Pulse,ON,Everlight and Freescale. Main products comprise IC,Modules,Potentiometer,IC Socket,Relay,Connector.Our parts cover such applications as commercial,industrial, and automotives areas.

We are looking forward to setting up business relationship with you and hope to provide you with the best service and solution. Let us make a better world for our industry!



Contact us

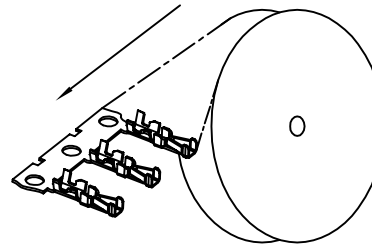
Tel: +86-755-8981 8866 Fax: +86-755-8427 6832

Email & Skype: info@chipsmall.com Web: www.chipsmall.com

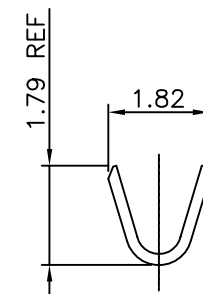
Address: A1208, Overseas Decoration Building, #122 Zhenhua RD., Futian, Shenzhen, China



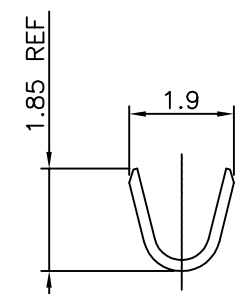
| | | |
|----------------|---------|---------------------|
| PRODUCT NO. | FINISH | UNREELING DIRECTION |
| 10044403-101LF | NOTE 2a | FIG.1 |
| 10044403-T01LF | NOTE 2b | FIG.1 |



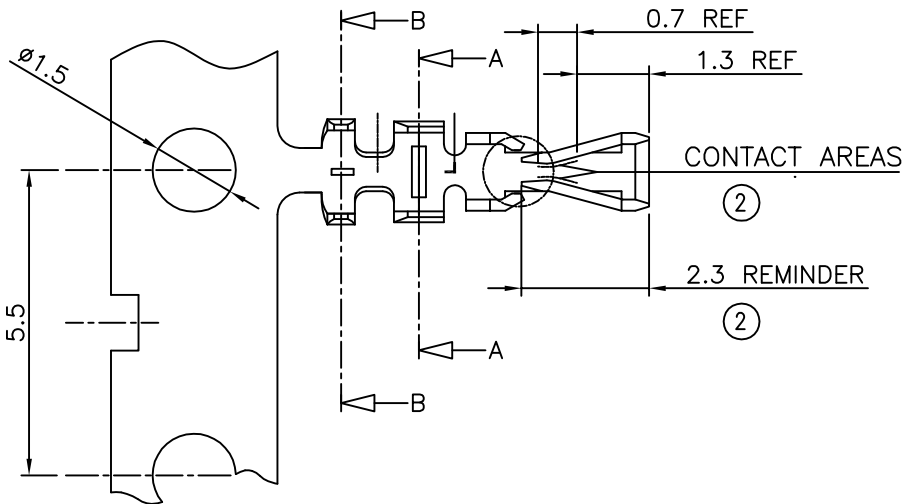
UNREELING DIRECTION
FIG.1



SECTION A-A

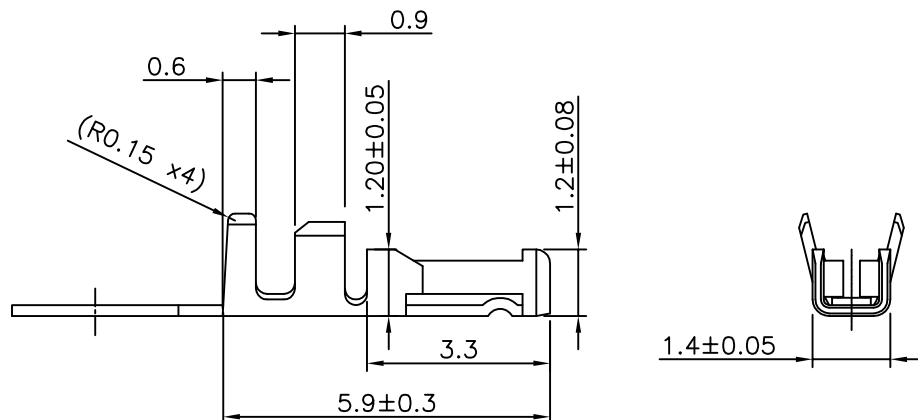


SECTION B-B



NOTES

- 1 MATERIAL : PHOSPHOR BRONZE
- ② FINISH : .
 - a- SELECTIVE GOLD PLATING 0.76µm MIN
REMINDER : GOLD FLASH
 - b- 2.5µm-5µm MATTE TIN
REMINDER : 2.5µm-5µm MATTE TIN
- UNDERPLATING: 1.27µm Ni MIN FOR BOTH
- 4 GENERAL TOLERANCE : ±0.25
- 5 RECOMMENDED WIRE : LEONI FLRY-A 0.35 (AWG-22)
Ø1.35 MAX
- 6 THIS PRODUCT MEETS EUROPEAN UNION DIRECTIVES AND OTHER COUNTRY REGULATIONS AS DESCRIBED IN GS-22-008
- 7 CRIMP SPECIFICATION AS PER GS-20-058
- 8 PRODUCT SPECIFICATION : GS-12-415



| | | | | | |
|-------------|----------------|---------------------------------------|------------------|------------|--------------------------|
| mat'l. code | | surface | tolerance | projection | product family |
| | | ISO 1302 | ISO 406 ISO 1101 | | MINITEK |
| ltr | | tolerances unless otherwise specified | | | title |
| ecn no | dr | angles | linear | | |
| D J07-0092 | R.S | 07.07.02 | .x ±0.25 | mm | CTW MINITEK AWG 22-24 |
| E F08-0182 | LMU | 08.05.19 | .xx ±0.15 | | |
| F F12-0004 | JCO | 12.01.04 | .xxx ±0.05 | scale 5:1 | sheet 1 of 1 size |
| G F12-0088 | JCO | 12.07.17 | dr L.MULIN | 08.05.19 | dwg no |
| H F-21709 | AMA | 15.08.18 | engr J.COMPAGNON | 08.05.19 | 10044403 |
| | | chr | | | A3 |
| | | appd | | | type CUSTOMER Drawing |
| sheet index | revision sheet | | | | |



Copyright FCI