



Chipsmall Limited consists of a professional team with an average of over 10 year of expertise in the distribution of electronic components. Based in Hongkong, we have already established firm and mutual-benefit business relationships with customers from,Europe,America and south Asia,supplying obsolete and hard-to-find components to meet their specific needs.

With the principle of "Quality Parts,Customers Priority,Honest Operation,and Considerate Service",our business mainly focus on the distribution of electronic components. Line cards we deal with include Microchip,ALPS,ROHM,Xilinx,Pulse,ON,Everlight and Freescale. Main products comprise IC,Modules,Potentiometer,IC Socket,Relay,Connector.Our parts cover such applications as commercial,industrial, and automotives areas.

We are looking forward to setting up business relationship with you and hope to provide you with the best service and solution. Let us make a better world for our industry!



Contact us

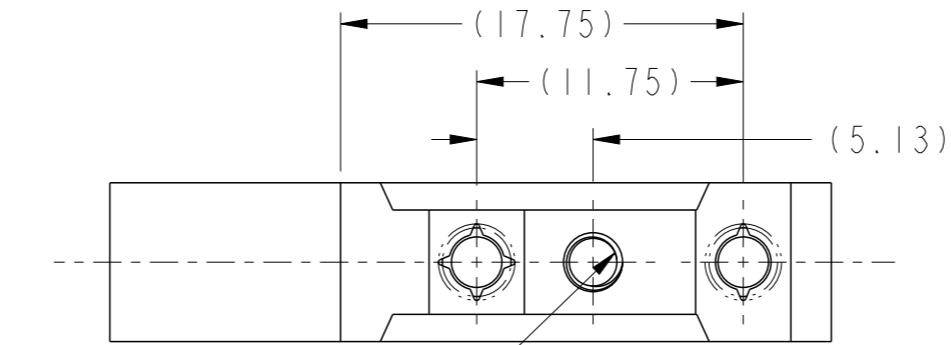
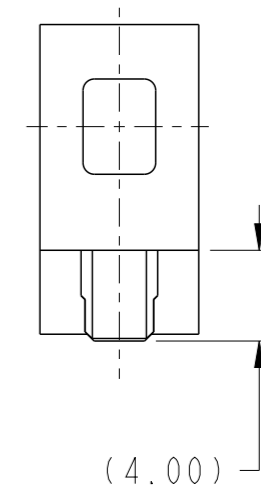
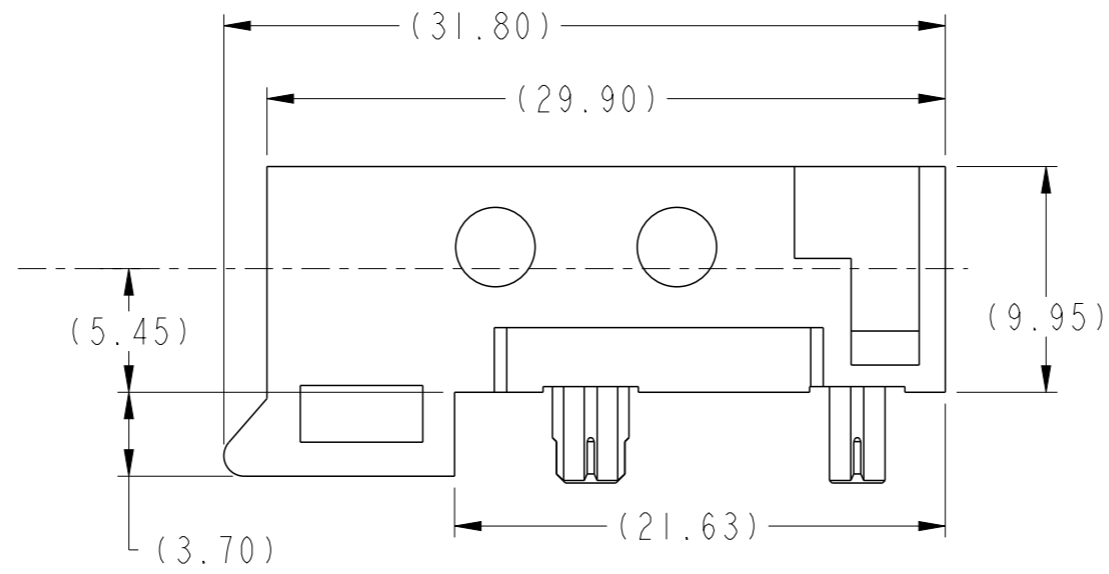
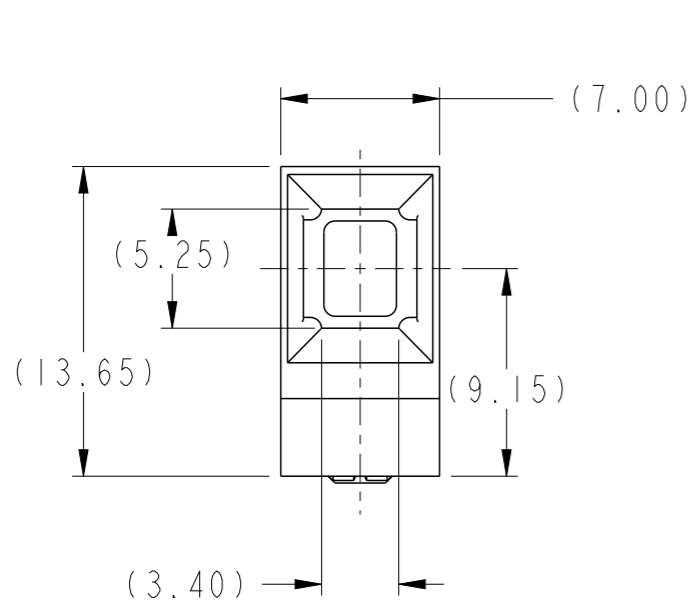
Tel: +86-755-8981 8866 Fax: +86-755-8427 6832

Email & Skype: info@chipsmall.com Web: www.chipsmall.com

Address: A1208, Overseas Decoration Building, #122 Zhenhua RD., Futian, Shenzhen, China



PRODUCT NUMBER
SEE TABLE, SHT 2



M3 x 0.5-6H
x 3.0 DEEP
(0.3 x 45° CHAMFER) $\triangle D$

spec ref	-	dr	Chen-Hong Tan	2005/08/17	projection	MM	size	A3	scale	3:1	
tolerance std	ASME Y14.5	eng	Yong-Keat Lim	2011/10/04			ecn no	ELX-S-006144-1			
	TOLERANCES UNLESS OTHERWISE SPECIFIED	chr	-	apppr			Chen-Hong Tan	2011/10/07	product family	AirMax ACCESSORIES	
surface	✓	linear	0.X	±0.3		7.2MM R/A GUIDE SOCKET 2/3 PAIR	rel level	Released			
			0.XX	±0.10			dwg no	10045367		rev	D
		angular	0°	±2°			cat. no.	-		Product - Customer Drw	sheet 1 of 2




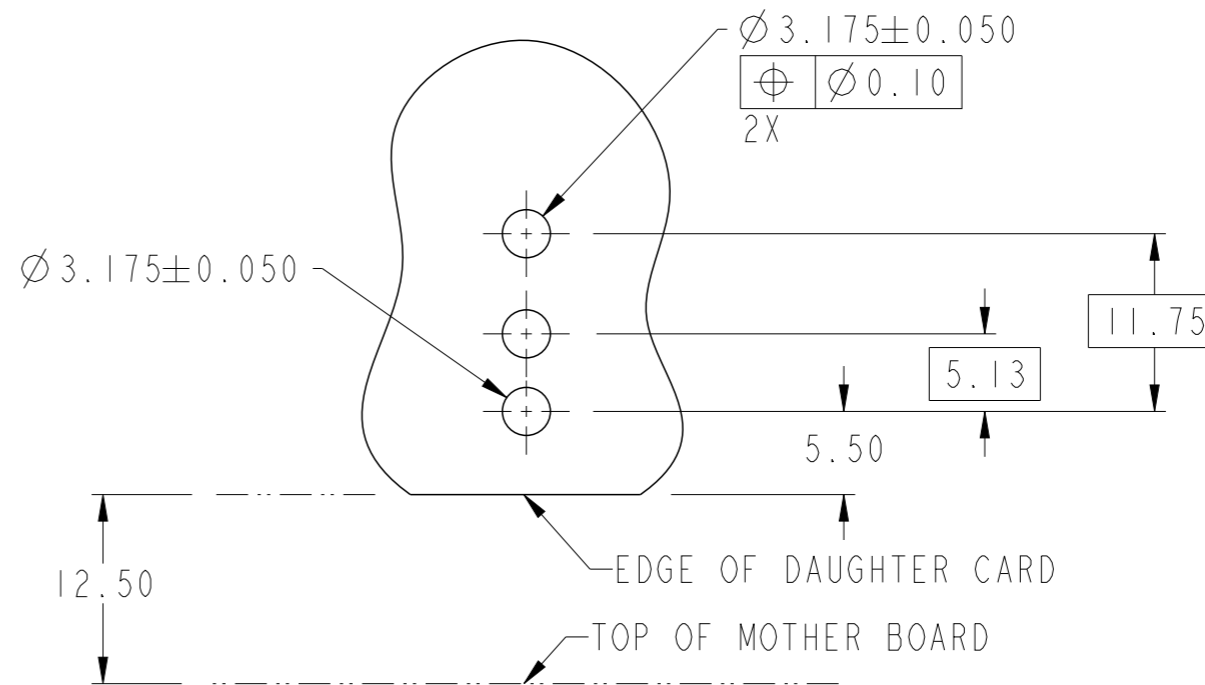
Copyright FCI.

PRODUCT NUMBER

10045367-101LF

NOTES:

- ① MATERIAL: ZINC ALLOY.
- ② FINISH: TRIVALENT CHROMATE IRIDESCENT
- ③ APPLICATION SPECIFICATION: GS-20-045.
- ④ REFER TO CUSTOMER DRAWING 10035911 FOR INFORMATION REGARDING PCB LAYOUT OF POWER AND GUIDE MODULES RELATIVE TO SIGNAL MODULES.
- 5 THIS PRODUCT MEETS EUROPEAN UNION DIRECTIVES AND OTHER COUNTRY REGULATIONS AS DESCRIBED IN GS-22-008.
- 6 PACKAGING MEETS GS-14-920 LEAD FREE LABELING SPECIFICATION.
- 7 A  SYMBOL WILL BE NEXT TO ANY DIMENSION, VIEW OR NOTE WHICH HAS BEEN MODIFIED WITH THE CURRENT DRAWING REVISION.



RECOMMENDED PCB LAYOUT

NOTE 4
SCALE: 2:1



Copyright FCI.

spec ref	-	dr	Chen-Hong Tan	2005/08/17	projection	MM	size	A3	scale	1:1	
tolerance std	ASME Y14.5	eng	Yong-Keat Lim	2011/10/04		← →	ecn no	ELX-S-006144-1			
TOLERANCES UNLESS OTHERWISE SPECIFIED		chr	-	-			product family	AirMax ACCESSORIES	rel level	Released	
surface	✓	appr	Chen-Hong Tan	2011/10/07	7.2MM R/A GUIDE SOCKET		dwg no	10045367		rev	D
ASME Y14.5	linear	0.X	±0.3		2/3 PAIR		Product - Customer Drw		sheet 2 of 2		
		0.XX	±0.10		cat. no.	-		PDS: Rev :D		STATUS:Released	
	angular	0°	±2°		www.fci.com		Printed: Oct 07, 2011				