



Chipsmall Limited consists of a professional team with an average of over 10 year of expertise in the distribution of electronic components. Based in Hongkong, we have already established firm and mutual-benefit business relationships with customers from,Europe,America and south Asia,supplying obsolete and hard-to-find components to meet their specific needs.

With the principle of “Quality Parts,Customers Priority,Honest Operation,and Considerate Service”,our business mainly focus on the distribution of electronic components. Line cards we deal with include Microchip,ALPS,ROHM,Xilinx,Pulse,ON,Everlight and Freescale. Main products comprise IC,Modules,Potentiometer,IC Socket,Relay,Connector.Our parts cover such applications as commercial,industrial, and automotives areas.

We are looking forward to setting up business relationship with you and hope to provide you with the best service and solution. Let us make a better world for our industry!



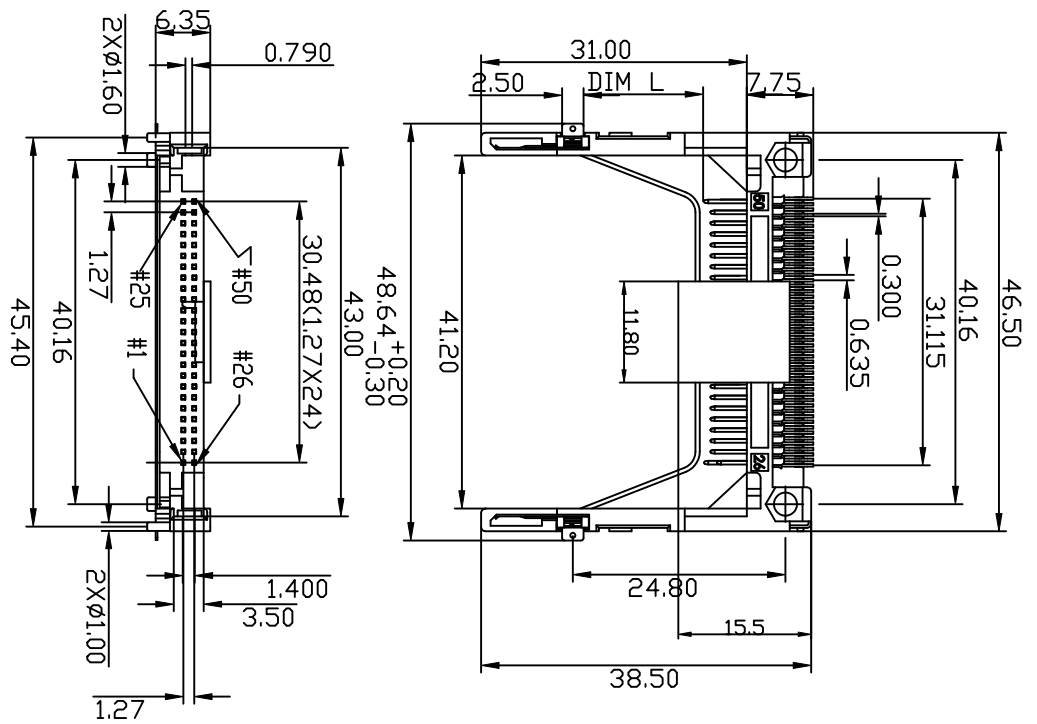
Contact us

Tel: +86-755-8981 8866 Fax: +86-755-8427 6832

Email & Skype: info@chipsmall.com Web: www.chipsmall.com

Address: A1208, Overseas Decoration Building, #122 Zhenhua RD., Futian, Shenzhen, China





PIN NUMBER	DIM. L
25,26	3.50
ALL OTHER PINS	4.25
1, 13, 38, 50	5.00

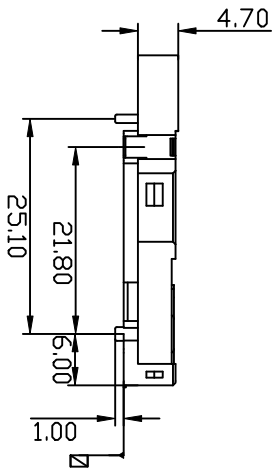
NOTES :
 1. MATERIAL : HIGH TEMPERATURE THERMOPLASTIC
 INSULATOR : UL94V-0
 FLAMMABILITY RATING: UL94V-0
 COLOR: IVORY

CONTACT : COPPER ALLOY
 GROUND MOUNTING EAR: COPPER ALLOY
 PICK-UP CAP: HIGH TEMP THEROPLASTIC.

2. PLATING :
 CONTACT AREA: SELECTIVE GOLD (SEE P/N DESCRIPTION)
 UNDER PLATING: 50µ" NICKEL OVERALL
 SOLDER TAIL AREA: 100µ" TIN/LEAD OR 100µ" MATTE TIN.
 GROUND MOUNT EAR AREA: 100µ" TIN/LEAD OR 100µ" MATTE TIN.

3. SOLDER TAILS TO BE WITHIN 0.05 UPWARD
 AND 0.2 DOWNWARD FROM Z-DATUM PLACE,
 AND COPPLANARITY OF SOLDER TAILS TO BE
 WITHIN 0.10mm.

4. PRODUCT SPEC: GS-12-240.
 5. PACKAGING SPEC: GS-14-980.



mot'l. code	tolerances unless otherwise specified		CUSTOMER COPY	title	product family	code
lir	ecn no	dr	dtte	linear	CF	TWN
A	T05-0258	A.C.	11/21/05	.XX ± 0.20	CF	sheet
B	T06-0047	A.C.	3/07/06	.XXX ± 0.10	S/O=0	1 of 3
C	T06-0075	A.C.	4/13/06	0° ± 2°		
D	T08-1171	S.LIN	10/12/08	dr	CF	
E	T09-1049	S.LIN	04/09/09	enfr	CF	
F	T09-1075	S.LIN	05/20/09	chr	CF	
sheet index	revision			H.C LIU	scale	
		F	F		NA	
		1	2			
			3			

1 | 2

1 | 2

3 |

4

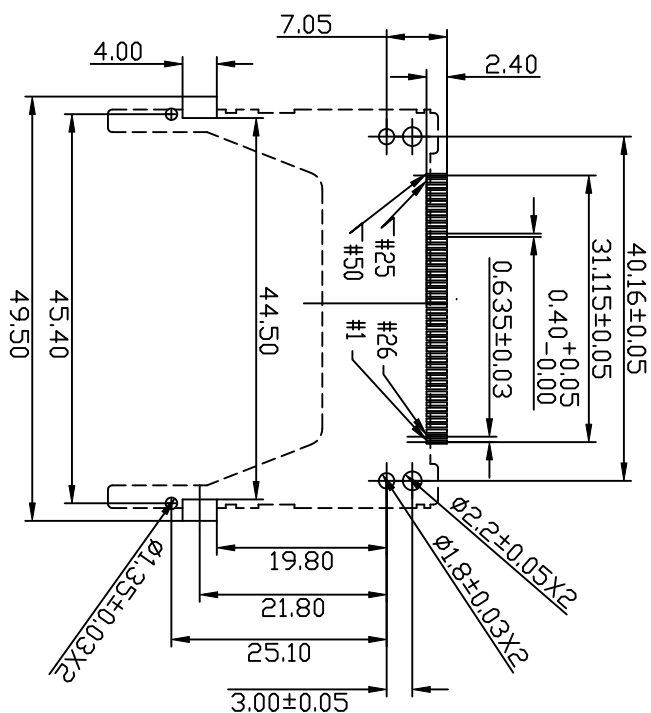


6.Part Number Description:

P/N: **10053868-XX50XX**

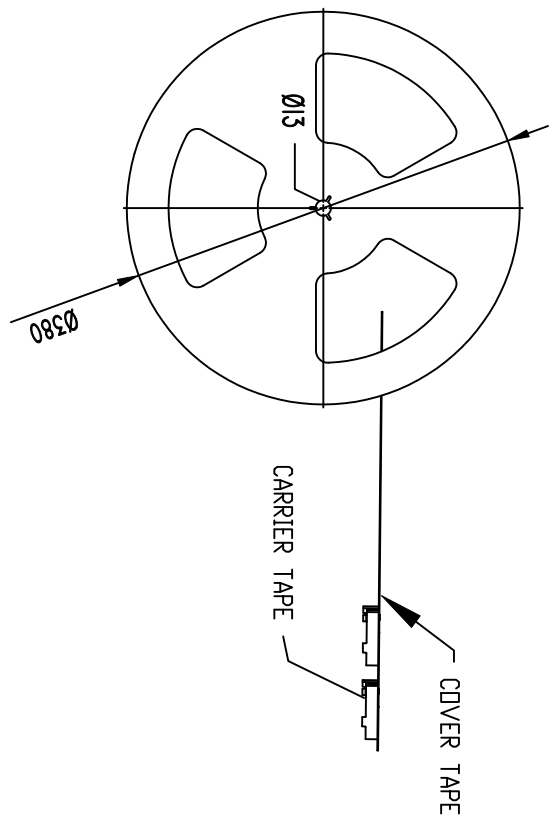
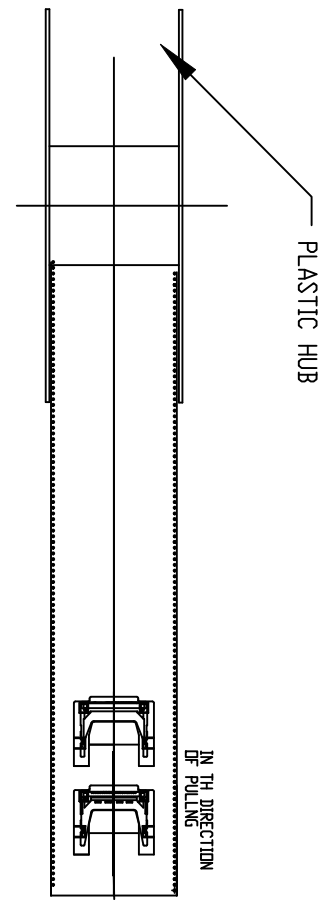
- PLATING ON SOLDER TAIL AREA:
BLANK: 100u" TIN/LEAD.
LF: 100u" MATTE TIN.
- 0: WITH PICK-UP CAP + TAPE&REEL PACKAGE.
1: WITHOUT PICK-UP CAP + TRAY PACKAGE.
2: WITH PICK-UP CAP + TRAY PACKAGE.
- PIN COUNT.
- KEY TYPE:
1: REVERSE TYPE
- GOLD PLATING:
B: 10u" GOLD PLATE
E: 30u" GOLD PLATE

7. THIS PRODUCT (10053868-XXXXXLF) MEETS THE EUROPEAN UNION DIRECTIVE AS DESCRIBED IN GS-22-008.
8. THIS PRODUCT (10053868-XXXXX) MEETS THE EUROPEAN UNION DIRECTIVE AS DESCRIBED IN GS-22-008 EXCEPT FOR Pb.
9. THE HOUSING WILL WITHSTAND EXPOSURE TO 260°C PEAK TEMPERATURE FOR 10 SECONDS IN A CONVECTION, IR DR VAPER PHASE REFLOW OVEN.
10. THE PRODUCTS WHERE THE PART NUMBER ENDS IN 'LF' MEET THE CRITERIA SHOWN IN THE NOTES 7 AND 9.

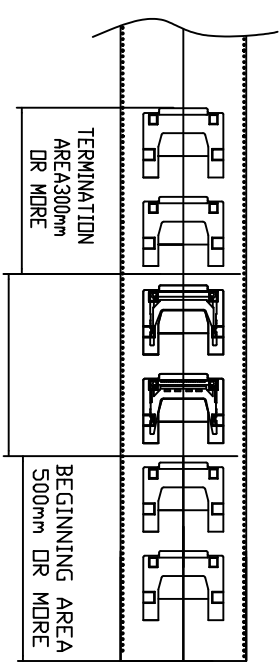
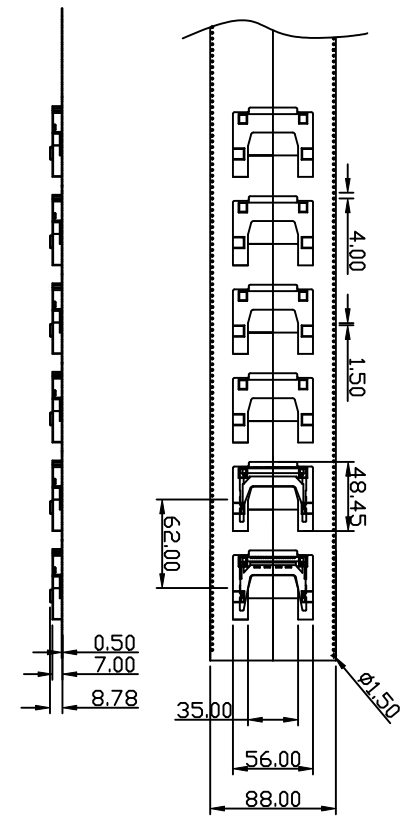


General Tolerance +/-0.05mm
Recommended PCB Pattern

mot'l. code	ecn no	dr	dtte	lineor	tolerances unless otherwise specified	CUSTOMER COPY	projection	title	product family	code
A	105-0258	A.C.	11/21/05		.XX ± 0.20			CF HEADER TYPE II REVERSE	CF	TWN
B	106-0047	A.C.	3/07/06		.XXX ± 0.10			S/O=0		sheet 3 of 3
C	106-0075	A.C.	4/13/06	angles	0° ± 2°					
D	108-1171	S.LIN	10/12/08	dr						
E	109-1049	S.LIN	04/09/09	engr						
E	109-1075	S.LIN	05/20/09	chr						
sheet index	revision									
		F	F	F						
		1	2	3						



NOTES:
 1 CARRIER TAPE: PS T=0.4MM
 2 COVER TAPE: PE
 3 PLASTIC HUB: PS



COMPOSITION OF PACKAGING

mot'l. code	tolerances unless otherwise specified		CUSTOMER COPY		title	
lir	ech no	dr	dtte	lineor	projection	CF HEADER TYPE II REVERSE S/O=0
A	T05-0258	A.C.	11/21/05	.XX ± 0.20	MM	www.fciconnect.com
B	T06-0047	A.C.	3/07/06	.XXX ± 0.10	MM	
C	T06-0075	A.C.	4/13/06	0° ± 2°	MM	
D	T08-1171	S.LIN	10/12/08	dr ALLEN CHANG	MM	
E	T09-1049	S.LIN	04/09/09	engf ALLEN CHANG	MM	
F	T09-1075	S.LIN	05/20/09	chr STERLING LIN	MM	
				pppd H.C LIU	MM	
sheet index	revision	sheet	1	2	3	

ACAD

cage code