



Chipsmall Limited consists of a professional team with an average of over 10 year of expertise in the distribution of electronic components. Based in Hongkong, we have already established firm and mutual-benefit business relationships with customers from,Europe,America and south Asia,supplying obsolete and hard-to-find components to meet their specific needs.

With the principle of "Quality Parts,Customers Priority,Honest Operation,and Considerate Service",our business mainly focus on the distribution of electronic components. Line cards we deal with include Microchip,ALPS,ROHM,Xilinx,Pulse,ON,Everlight and Freescale. Main products comprise IC,Modules,Potentiometer,IC Socket,Relay,Connector.Our parts cover such applications as commercial,industrial, and automotives areas.

We are looking forward to setting up business relationship with you and hope to provide you with the best service and solution. Let us make a better world for our industry!



Contact us

Tel: +86-755-8981 8866 Fax: +86-755-8427 6832

Email & Skype: info@chipsmall.com Web: www.chipsmall.com

Address: A1208, Overseas Decoration Building, #122 Zhenhua RD., Futian, Shenzhen, China



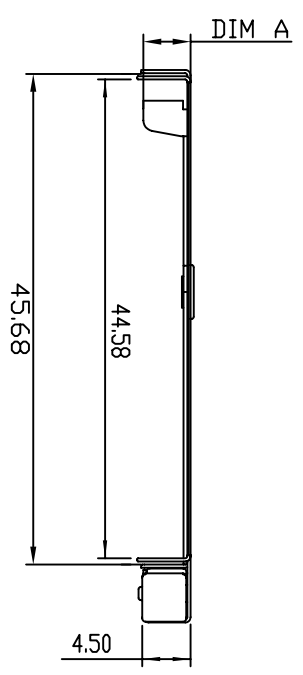
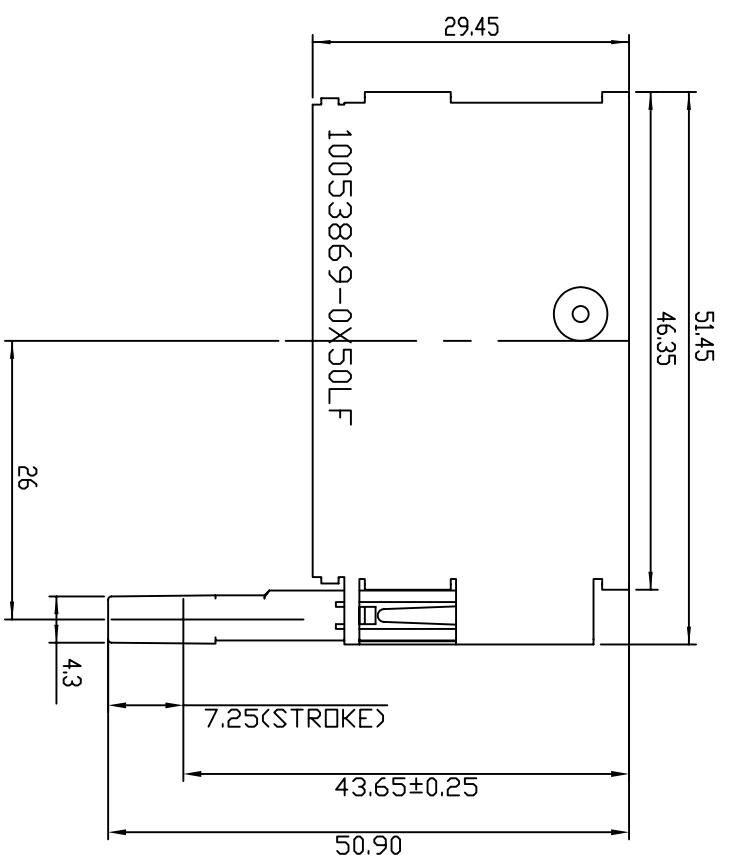


TABLE 1

PART NO.	APPLICABLE TO CF HEADER PART NO.	DIM. A
10053869-0050LF	CF TYPE I Header Normal & Reverse	2.95
10053869-0150LF	CF TYPE II Header Normal	4.40

- NOTES :
1. MATERIAL :
COVER : STAINLESS STEEL.
ARM : STAINLESS STEEL.
PUSH ROD : HIGH TEMPERATURE THERMOPLASTIC, UL94V-0, BLACK RIVET : COPPER ALLOY.
 2. PRODUCT SPEC: GS-12-240.
 3. PACKAGING SPEC: GS-14-981.

4. PART NO DESCRIPTION:
10053869-0 X 5 0 LF

LEAD FREE VERSION (RoHS Compatible).

SEE THE TABLE 1

5. THIS PRODUCT (10053869-0X50LF) MEETS THE EUROPEAN UNION DERECTIVE AS DESCRIBED IN GS-22-008.
6. THE HOUSING WILL WITHSTAND EXPOSURE TO 260°C PEAK TEMPERATURE FOR 10 SECONDS IN A CONNECTION, IR OR VAPOR PHASE REFLOW OVEN.
7. THE PRODUCT WHERE THE PART NUMBER ENDS IN 'LF' MEET THE CRITERIA SHOWN IN THE NOTES 5 AND 6.

mat'l. code		tolerances unless otherwise specified		CUSTOMER COPY		title	
ltr	ecn no	dr	date	proj	scale	product family	code
A	T05-02581	A.C.	11/21/05	lineor	.XXX ±.10	CF	10053869
				angles	0° ±2°		
				dr	ALLEN CHANG 12/22/05		
				enfr	ALLEN CHANG 12/22/05		
				chr	STERLING LIN 12/22/05		
				appl	H.C LIU 12/22/05		
sheet	revision	A					
index	sheet	1					

ACAD

code code
22526