



Chipsmall Limited consists of a professional team with an average of over 10 year of expertise in the distribution of electronic components. Based in Hongkong, we have already established firm and mutual-benefit business relationships with customers from,Europe,America and south Asia,supplying obsolete and hard-to-find components to meet their specific needs.

With the principle of “Quality Parts,Customers Priority,Honest Operation,and Considerate Service”,our business mainly focus on the distribution of electronic components. Line cards we deal with include Microchip,ALPS,ROHM,Xilinx,Pulse,ON,Everlight and Freescale. Main products comprise IC,Modules,Potentiometer,IC Socket,Relay,Connector.Our parts cover such applications as commercial,industrial, and automotives areas.

We are looking forward to setting up business relationship with you and hope to provide you with the best service and solution. Let us make a better world for our industry!



Contact us

Tel: +86-755-8981 8866 Fax: +86-755-8427 6832

Email & Skype: info@chipsmall.com Web: www.chipsmall.com

Address: A1208, Overseas Decoration Building, #122 Zhenhua RD., Futian, Shenzhen, China



PRODUCT NUMBER

10056844-YXXXLF

LEAD FREE, RoHS COMPATIBLE, NOTE 8.
PACKAGING SEE NOTE 5

PLATING

- 1 - 0.76µm GOLD/GXT (PdNi WITH GOLD FLASH) ON CONTACT AREA
2µm MIN MATTE TIN ON TAILS.
1.27µm NICKEL MIN UNDERPLATING

STYLE	SIZE
06	2x03
08	2x04
10	2x05
14	2x07
16	2x08
20	2x10
26	2x13
30	2x15
34	2x17
40	2x20

NOTES:

1 - HOUSING MATERIAL: HIGH TEMPERATURE THERMOPLASTIC, UL94 V-0 COLOR BLACK.

2 - CONTACT MATERIAL: COPPER ALLOY

3 - MINIMUM PUSH OUT FORCE OF PIN IN EITHER DIRECTION : 20N BEFORE SOLDERING.

4 - TO DETERMINE DIMENSIONS :
N = NUMBER OF POSITIONS PER ROW
EXAMPLE : 8 POS N x 2.54 = 20.32mm

5 - PACKAGING.

A = TAPE & REEL WITH PICK-UP CAP.

SEE TA-893 FOR PRODUCT AVAILABILITY.

= TUBE WITHOUT PICK-UP CAP

6 - NO LEFT POLARIZATION ON STYLE 06, 08, 10, 14.

7 - NO RIGHT POLARIZATION ON STYLE 06, 08.

8. RoHS COMPLIANT & COMPATIBLE PRODUCT SPECIFICATIONS

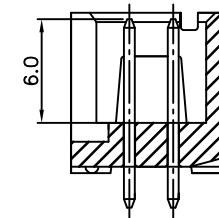
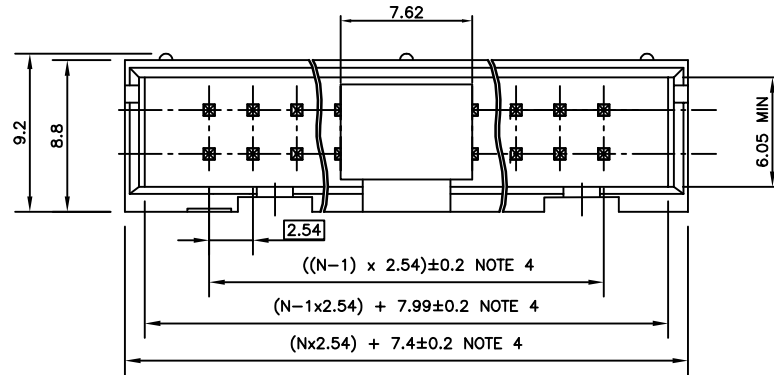
a - PLATING:

- "LF" MEANS THE PRODUCT IS LEAD-FREE AND RoHS COMPLIANT
2µm MINIMUM MATTE TIN ON TAILS OVER 1.27µm MINIMUM NICKEL UNDERPLATE.

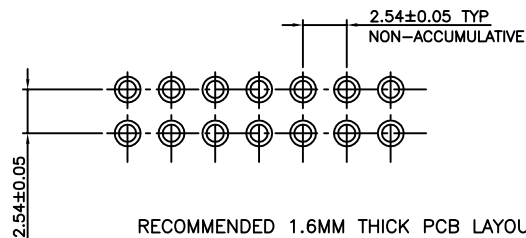
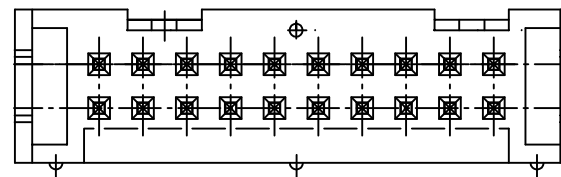
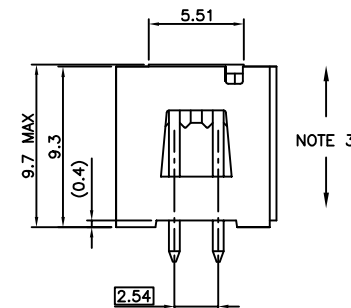
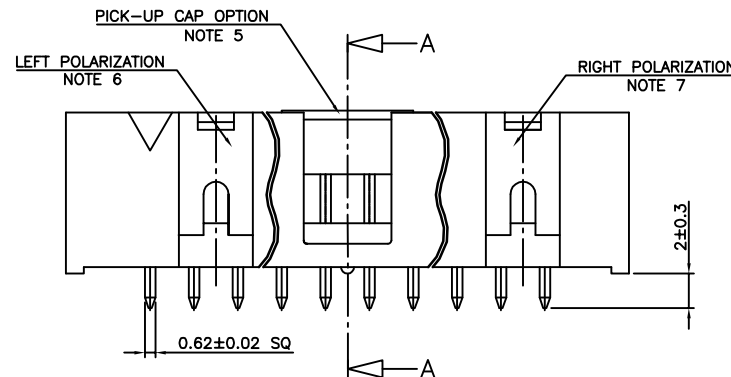
b - THIS PRODUCT MEETS EUROPEAN UNION DIRECTIVES AND OTHER COUNTRY REGULATIONS AS PER GS-47-0004

c - MANUFACTURING PROCESS COMPATIBILITY

- THE HOUSING WILL WITHSTAND EXPOSURE TO 260° PEAK TEMPERATURE FOR 10-30 SECONDS IN A CONVECTION INFRA-RED OR VAPOR PHASE REFLOW OVEN.
PHASE REFLOW OVEN.



SECTION A-A
WITHOUT CAP



RECOMMENDED 1.6MM THICK PCB LAYOUT,
STENCIL DESIGN RECOMMENDATIONS AS PER TA-894

mat'l. code		surface		tolerance		projection		product family	
NOTES 1, 2		ISO 1302		ISO 406 ISO 1101		mm		QKIE HDR	
ltr	ecn no	dr	date	tolerances unless otherwise specified		mm		title	
H	B-19564	BVE	14.11.27	angles	linear	mm		QKIE HEADER	
C	F07-0192	LMU	07.05.22			scale 1:1		LOW PROFILE PIN IN PASTE	
D	F07-0198	LMU	07.05.30	dr	LMU	05.05.30		dwg no	
E	F08-0146	YOV	08.04.11	enrg	JCO	06.07.17		sheet 1 of 1 size	
F	F09-0098	LMU	09.09.28	chr				10056844	
G	B-19070	LMU	14.10.15	appd	J COMPAGNON	06.07.17		A3	
sheet	revision							type	
index	sheet							CUSTOMER Drawing	