



Chipsmall Limited consists of a professional team with an average of over 10 year of expertise in the distribution of electronic components. Based in Hongkong, we have already established firm and mutual-benefit business relationships with customers from,Europe,America and south Asia,supplying obsolete and hard-to-find components to meet their specific needs.

With the principle of “Quality Parts,Customers Priority,Honest Operation,and Considerate Service”,our business mainly focus on the distribution of electronic components. Line cards we deal with include Microchip,ALPS,ROHM,Xilinx,Pulse,ON,Everlight and Freescale. Main products comprise IC,Modules,Potentiometer,IC Socket,Relay,Connector.Our parts cover such applications as commercial,industrial, and automotives areas.

We are looking forward to setting up business relationship with you and hope to provide you with the best service and solution. Let us make a better world for our industry!



Contact us

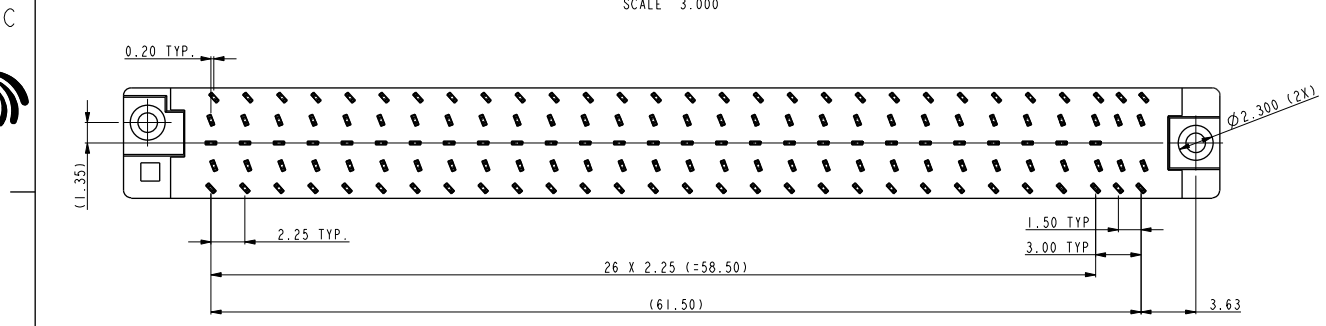
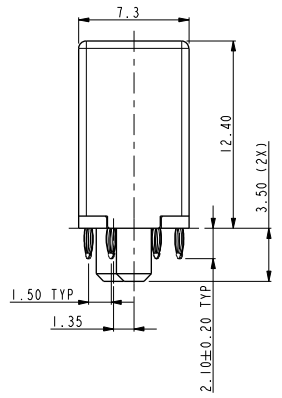
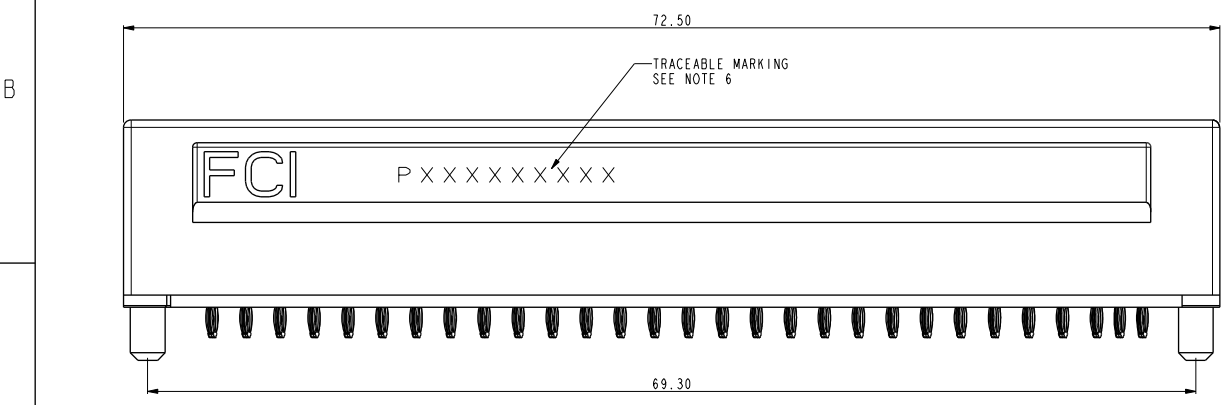
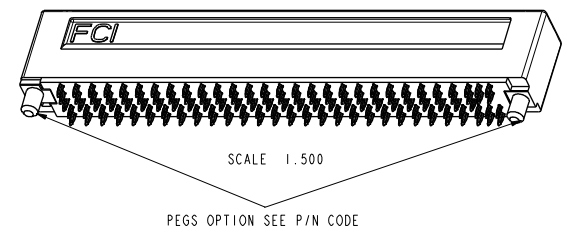
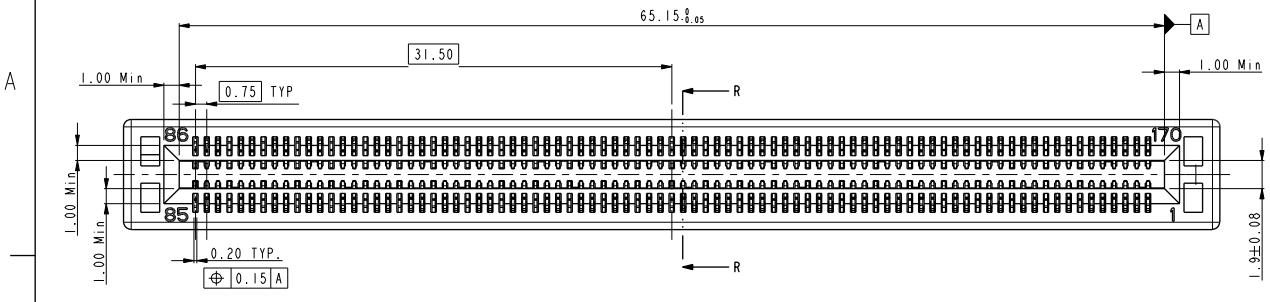
Tel: +86-755-8981 8866 Fax: +86-755-8427 6832

Email & Skype: info@chipsmall.com Web: www.chipsmall.com

Address: A1208, Overseas Decoration Building, #122 Zhenhua RD., Futian, Shenzhen, China



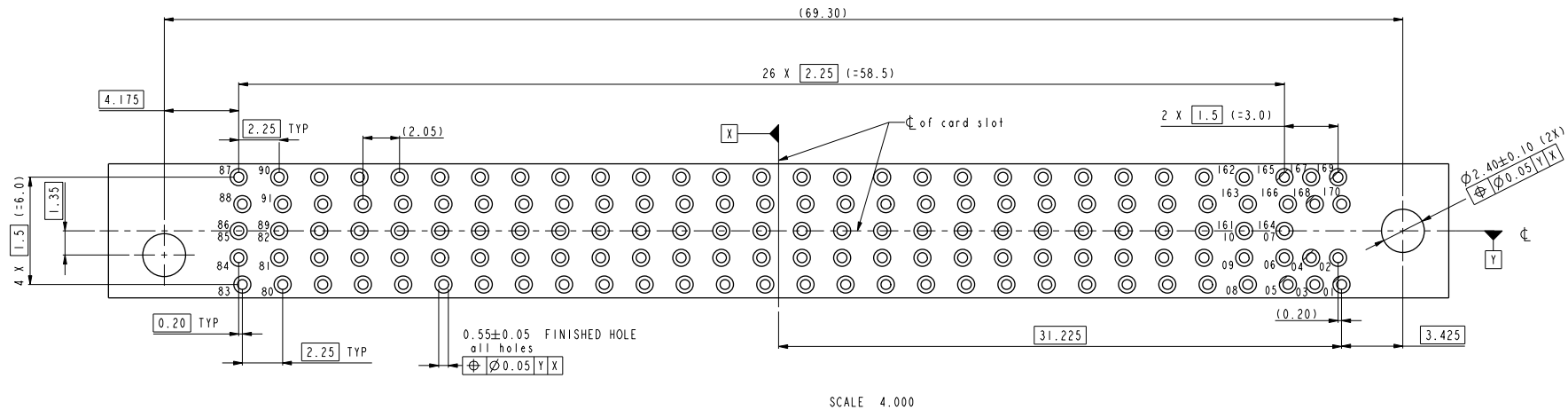
P/N	PLATING DESCRIPTION	REMARK
10058831-110LF & 10058831-111LF	Au	LEAD FREE
10058831-110 & 10058831-111	Au	NOT LEAD FREE



spec ref	*	dr	w wadmin	2007/05/11	projection	MM	size	A3	scale	1.000
tolerance std	TOLERANCES UNLESS OTHERWISE SPECIFIED	eng	De-Feng Qin	2012/11/20			ecn no	ELX-DG-13477-1	rel level	Released
ISO 406		chr	Terry Qiu	2012/11/20						
ISO 1101		appr	Pei-Ming Zheng	2012/11/30	product family					
surface	<input checked="" type="checkbox"/> linear <input type="checkbox"/> angular	<input type="checkbox"/> 0.X ±0.2 <input type="checkbox"/> 0.XX ±0.15 <input type="checkbox"/> 0.XXX ±0.08				title PF TYPE ASS'Y MICRO TCA		dwg no 10058831		rev K
ISO 1302	angular	0° ±5°	www.fci.com	cat. no.	*	Product - Customer Drw		sheet 1 of 4		

Copyright FCI.

Profile File - REV C - 2009-06-09



RECOMMENDED PCB LAYOUT
(SEE PICMG MICROTCA BASE SPECIFICATION FOR DETAIL)

REMARK: FUNCTIONAL CONTACT PIN LIST OF MATING INTERFACE

POWER	2, 9, 18, 27, 42, 57, 72, 84
GROUND	1, 7, 10, 13, 16, 19, 22, 25, 28, 31, 34, 37, 40, 43, 46, 49, 52, 55, 58, 61, 64, 67, 70, 73, 76, 79, 82, 85, 86, 89, 92, 95, 98, 101, 104, 107, 110, 113, 116, 119, 122, 125, 128, 131, 134, 137, 140, 143, 146, 149, 152, 155, 158, 161, 164, 170
GENERAL PURPOSE	3, 4, 5, 6, 8, 17, 26, 41, 56, 71, 83, 165, 166, 167, 168, 169
DIFFERENTIAL PAIRS	11/12, 14/15, 20/21, 23/24, 29/30, 32/33, 35/36, 38/39, 44/45, 47/48, 50/51, 53/54, 59/60, 62/63, 65/66, 68/69, 74/75, 77/78, 80/81, 87/88, 90/91, 93/94, 96/97, 99/100, 102/103, 105/106, 108/109, 111/112, 114/115, 117/118, 120/121, 123/124, 126/127, 129/130, 132/133, 135/136, 138/139, 141/142, 144/145, 147/148, 150/151, 153/154, 156/157, 159/160, 162/163

spec ref	*	dr	w wadmin	2007/05/11	projection	MM	size	A3	scale	1.000																				
tolerance std	TOLERANCES UNLESS OTHERWISE SPECIFIED	eng	De-Feng Qin	2012/11/20			ecn no	ELX-DG-13477-1																						
ISO 406		chr	Terry Qiu	2012/11/20			rel level	Released																						
ISO 1101		appr	Pei-Ming Zheng	2012/11/30	product family		rel level	Released																						
surface	<table border="1"> <tr> <td>linear</td> <td>0.X</td> <td>±0.2</td> </tr> <tr> <td></td> <td>0.XX</td> <td>±0.15</td> </tr> <tr> <td></td> <td>0.XXX</td> <td>±0.08</td> </tr> <tr> <td>ISO 1302</td> <td>angular</td> <td>0°</td> <td>±5°</td> </tr> </table>	linear	0.X	±0.2		0.XX	±0.15		0.XXX	±0.08	ISO 1302	angular	0°	±5°		<table border="1"> <tr> <td>title</td> <td>PF TYPE ASS'Y</td> </tr> <tr> <td></td> <td>MICRO TCA</td> </tr> <tr> <td>cat. no.</td> <td></td> </tr> </table>	title	PF TYPE ASS'Y		MICRO TCA	cat. no.		<table border="1"> <tr> <td>dwg no</td> <td>10058831</td> </tr> <tr> <td>rev</td> <td>K</td> </tr> </table>	dwg no	10058831	rev	K	Product - Customer Drw		sheet 2 of 4
linear	0.X	±0.2																												
	0.XX	±0.15																												
	0.XXX	±0.08																												
ISO 1302	angular	0°	±5°																											
title	PF TYPE ASS'Y																													
	MICRO TCA																													
cat. no.																														
dwg no	10058831																													
rev	K																													



Copyright FCI.

3.10 MIN. TAILING EDGE
OF CONTACTS

3.50±0.10 CENTERLINE OF
CONNECTOR CONTACTS

0.70±0.10 TYP

0.48±0.02 TYP
⊕ 0.1 Z
85 POSITIONS
2 SIDES

84 X 0.75 (=63.0)

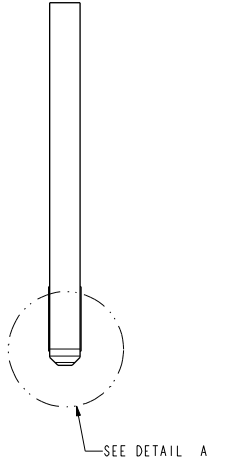
65.00±0.10

31.50

0.75 TYP
84 PLACES
TWO SIDES

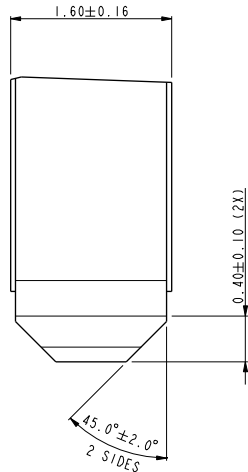
45°±P (2X)
R 0.50 (2X)

0.60 (2X)



SCALE 4.000

RECOMMENDED MODULE LAYOUT
(SEE PICMG ADVANCED MEZZANINE CRAD BASE SPECIFICATION FOR DETAIL)



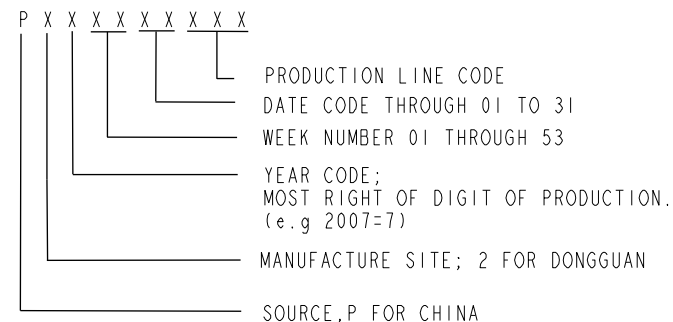
DETAIL A
SCALE 20.000

spec ref	*	dr	w wadmin	2007/05/11	projection	MM	size	A3	scale	1.000																						
tolerance std	ISO 406 ISO 1101	eng	De-Feng Qin	2012/11/20			ecn no	ELX-DG-13477-1																								
	TOLERANCES UNLESS OTHERWISE SPECIFIED	chr	Terry Qiu	2012/11/20			rel level	Released																								
surface	<table border="1"> <tr> <td>linear</td> <td>0.X</td> <td>±0.2</td> </tr> <tr> <td></td> <td>0.XX</td> <td>±0.15</td> </tr> <tr> <td></td> <td>0.XXX</td> <td>±0.08</td> </tr> <tr> <td>angular</td> <td>0°</td> <td>±5°</td> </tr> </table>	linear	0.X	±0.2		0.XX	±0.15		0.XXX	±0.08	angular	0°	±5°	appr	Pei-Ming Zheng	2012/11/30	product family			<table border="1"> <tr> <td>title</td> <td>PF TYPE ASS'Y</td> <td>dwg no</td> <td>10058831</td> <td>rev</td> <td>K</td> </tr> <tr> <td>cat. no.</td> <td>*</td> <td colspan="2">Product - Customer Drw</td> <td colspan="2">sheet 3 of 4</td> </tr> </table>	title	PF TYPE ASS'Y	dwg no	10058831	rev	K	cat. no.	*	Product - Customer Drw		sheet 3 of 4	
linear	0.X	±0.2																														
	0.XX	±0.15																														
	0.XXX	±0.08																														
angular	0°	±5°																														
title	PF TYPE ASS'Y	dwg no	10058831	rev	K																											
cat. no.	*	Product - Customer Drw		sheet 3 of 4																												
ISO 1302		www.fci.com																														

NOTES:

1. MATERIAL:
HOUSING: HIGH TEMPERATURE NYLON, GLASS FILLED UL94V-0
TERMINAL: COPPER ALLOY
2. FINISH:
10058831 -110LF AND 10058831-11LF
TERMINAL: 50u" NICKEL UNDERPLATE
CONTACT AREA : 30u" Au ON CONTACT AREA
PRESS FIT TAIL: 20u" MIN. Pure Sn OVER 50u" NICKEL.
10058831 -110 AND 10058831-111
TERMINAL: 50u" NICKEL UNDERPLATE
CONTACT AREA: 30u" Au ON CONTACT AREA
PRESS FIT TAIL: 20u" MIN. SnPb OVER 50u" NICKEL.
3. THE PRODUCT MEETS PICMG MICROTCA SPECIFICATION AS DESCRIBED IN GS-12-422.

6. MARKING INFORMATION:



PRODUCT NUMBER CODE



HEIGHT OF THE MAKING TEXT: IMM MIN

4. GOLD PLATING NOTE:

HARD GOLD PLATED, ITS DENSITY IS 17.0g/cu.mm.
IF USED PURE GOLD DENSITY 19.3g/cu.mm. XRF PROFILE FOR MEASUREMENT, MUST MULTIPLY FACTOR 1.135

PCB NOTE:

5. $\varnothing 0.64 \pm 0.02$ mm DRILLED HOLES, PLATED WITH 0.8um min CHEM. TIN OVER 25um MIN .Cu PLATING TO ACHIEVE $\varnothing 0.55 \pm 0.05$ mm FINISHED HOLES.



Copyright FCI.

spec ref *		dr	w wadmin	2007/05/11	projection	MM	size	A3	scale	1.000		
tolerance std		eng	De-Feng Qin	2012/11/20			ecn no ELX-DG-13477-1					
ISO 406		chr	Terry Qiu	2012/11/20			rel level		Released			
ISO 1101		appr	Pei-Ming Zheng	2012/11/30			product family					
surface	linear	0.X	±0.2		www.fci.com	title	PF TYPE ASS'Y		dwg no	10058831	rev	K
		0.XX	±0.15									
		0.XXX	±0.08									
ISO 1302	angular	0°	±5°		cat. no.	Product - Customer Drw		sheet 4 of 4				