



Chipsmall Limited consists of a professional team with an average of over 10 year of expertise in the distribution of electronic components. Based in Hongkong, we have already established firm and mutual-benefit business relationships with customers from,Europe,America and south Asia,supplying obsolete and hard-to-find components to meet their specific needs.

With the principle of "Quality Parts,Customers Priority,Honest Operation,and Considerate Service",our business mainly focus on the distribution of electronic components. Line cards we deal with include Microchip,ALPS,ROHM,Xilinx,Pulse,ON,Everlight and Freescale. Main products comprise IC,Modules,Potentiometer,IC Socket,Relay,Connector.Our parts cover such applications as commercial,industrial, and automotives areas.

We are looking forward to setting up business relationship with you and hope to provide you with the best service and solution. Let us make a better world for our industry!



## Contact us

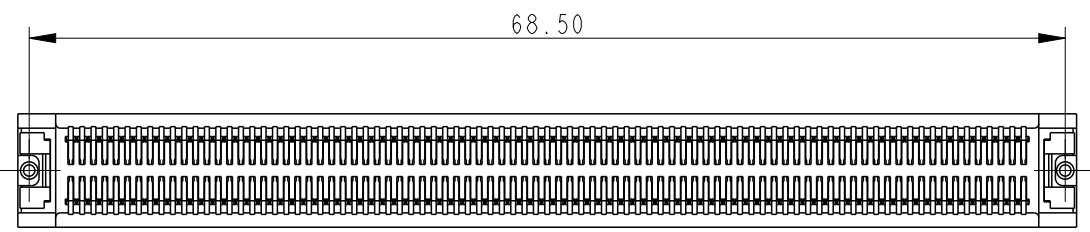
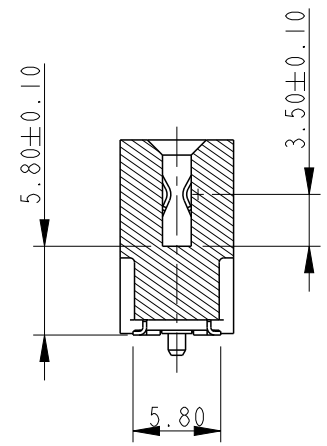
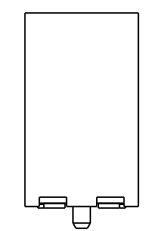
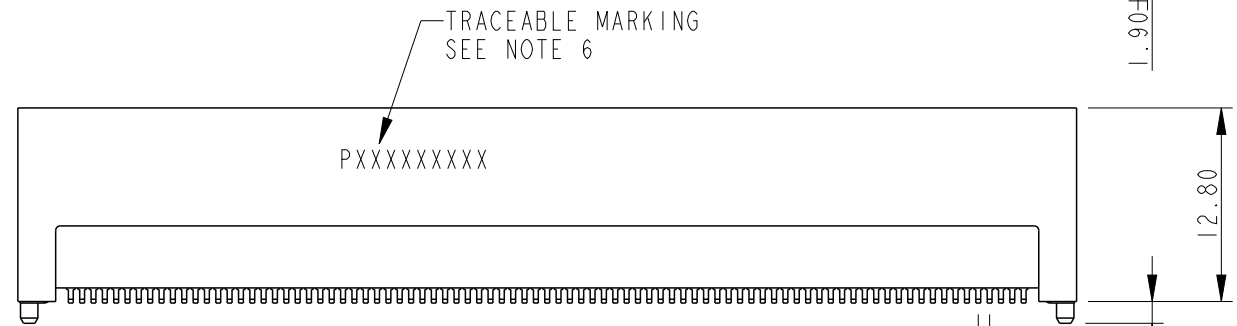
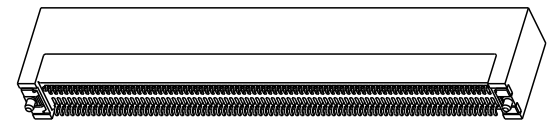
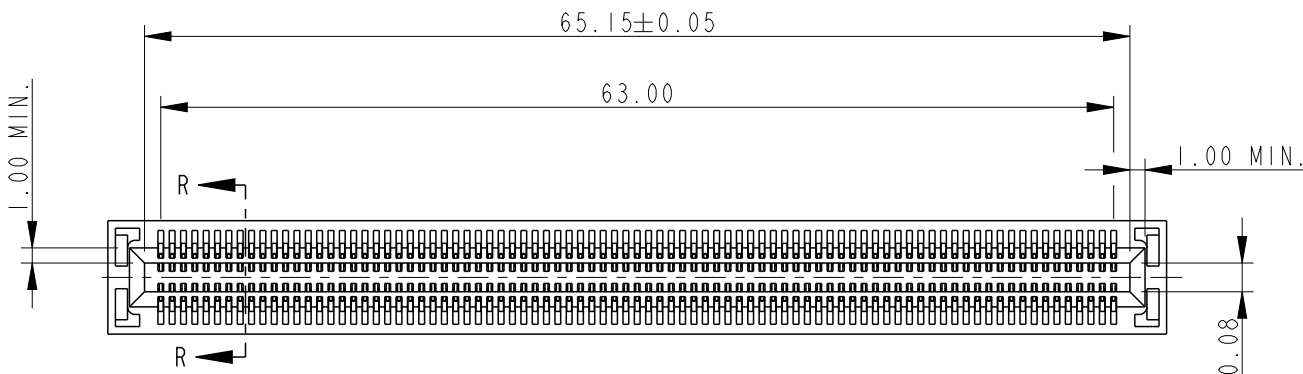
Tel: +86-755-8981 8866 Fax: +86-755-8427 6832

Email & Skype: info@chipsmall.com Web: www.chipsmall.com

Address: A1208, Overseas Decoration Building, #122 Zhenhua RD., Futian, Shenzhen, China



PART NUMBER 10058835-1000LF



spec ref	*	dr	w wcadmin	2006/08/30	projection	MM	size	A4	scale	1:1
tolerance std	TOLERANCES UNLESS OTHERWISE SPECIFIED	eng	Wei Yang	2014/08/27				ecn no	ELX-DG-18450-1	
ASME Y14.5		chr	Terry Qiu	2014/09/17		product family			rel level	Released
surface		appr	Pei-Ming Zheng	2014/09/19	title		dwg no	10058835	rev	H
ASME Y14.5		linear	www.fci.com		SMT TYPE ASS'Y					
	angular	cat. no.		MICRO TCA		STATUS:Released		Printed: Sep 19, 2014		

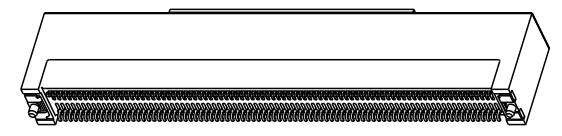
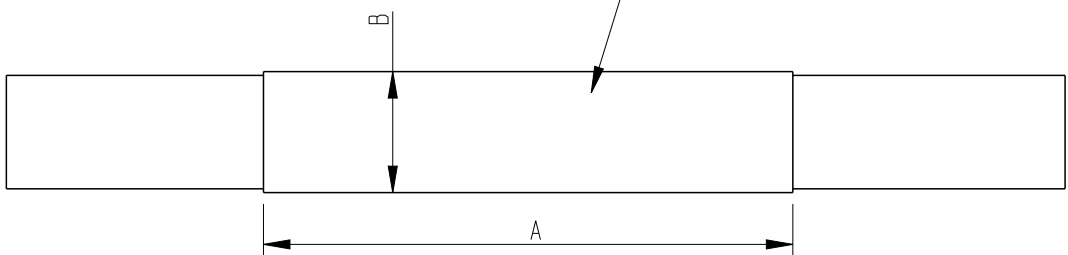
PrdE File - REV C - 2009-06-09

Copyright FCI.

PART NUMBER	10058835-1001LF
	10058835-1003LF

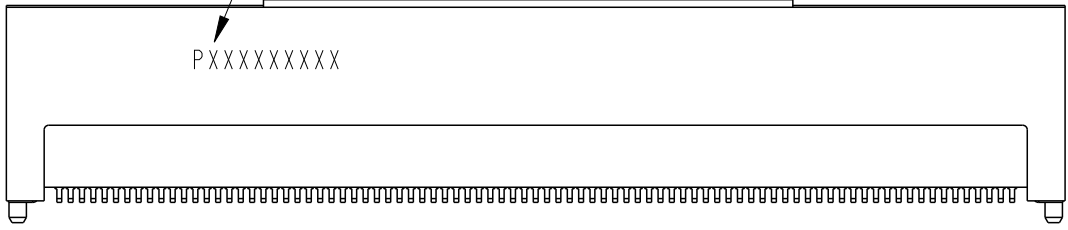


MYLAR FOR PLACE AND PICK  
THICKNESS 0.12MM



TRACEABLE MARKING  
SEE NOTE 6

PXXXXXXXXX



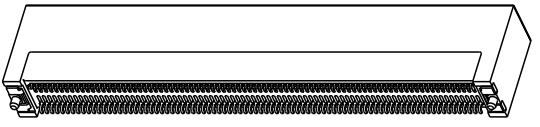
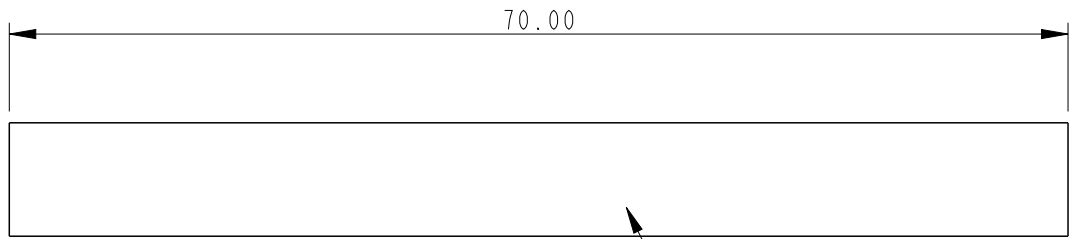
PART NUMBER	DIM "A"±0.5	DIM "B"±0.3
10058835-1001LF	35	8.0
10058835-1003LF	22	7.0



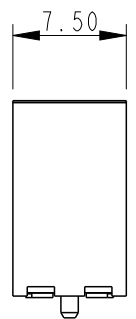
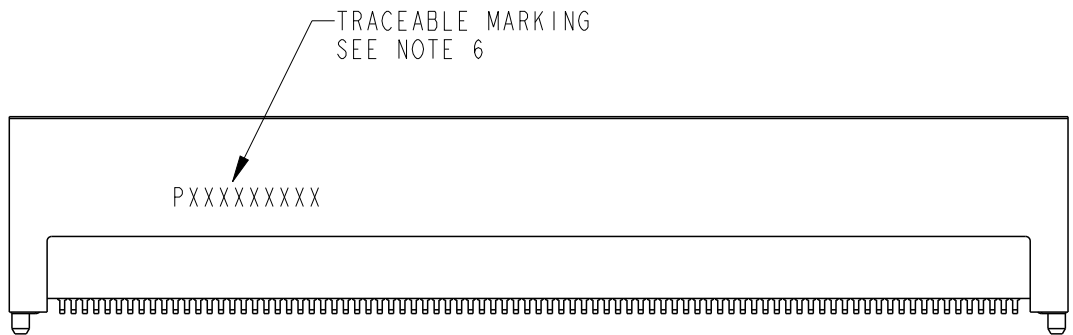
NOTE: ALL THE CONNECTOR DIMENSIONS REFER TO PART NUMBER 10058835-1000LF

spec ref	*	dr	w wadmin	2006/08/30	projection	MM	size	A4	scale	1:1
tolerance std	TOLERANCES UNLESS OTHERWISE SPECIFIED	eng	Wei Yang	2014/08/27			←→	ecn no	ELX-DG-18450-1	
ASME Y14.5		chr	Terry Qiu	2014/09/17		product family		rel level	Released	
-		appr	Pei-Ming Zheng	2014/09/19	title		SMT TYPE ASS'Y		dwg no	10058835
surface	linear	0.X	±0.3		cat. no.		*	Product - Customer Drw		sheet 2 of 6
ASME Y14.5		0.XX	±0.20		www.fci.com	rev		H		
	0.XXX	±0.100	angular			0°	±2°			

PART NUMBER 10058835-1002LF



MYLAR FOR PLACE AND PICK THICKNESS 0.12MM



SCALE 2:1

NOTE: ALL THE CONNECTOR DIMENSIONS REFER TO PART NUMBER 10058835-1000LF



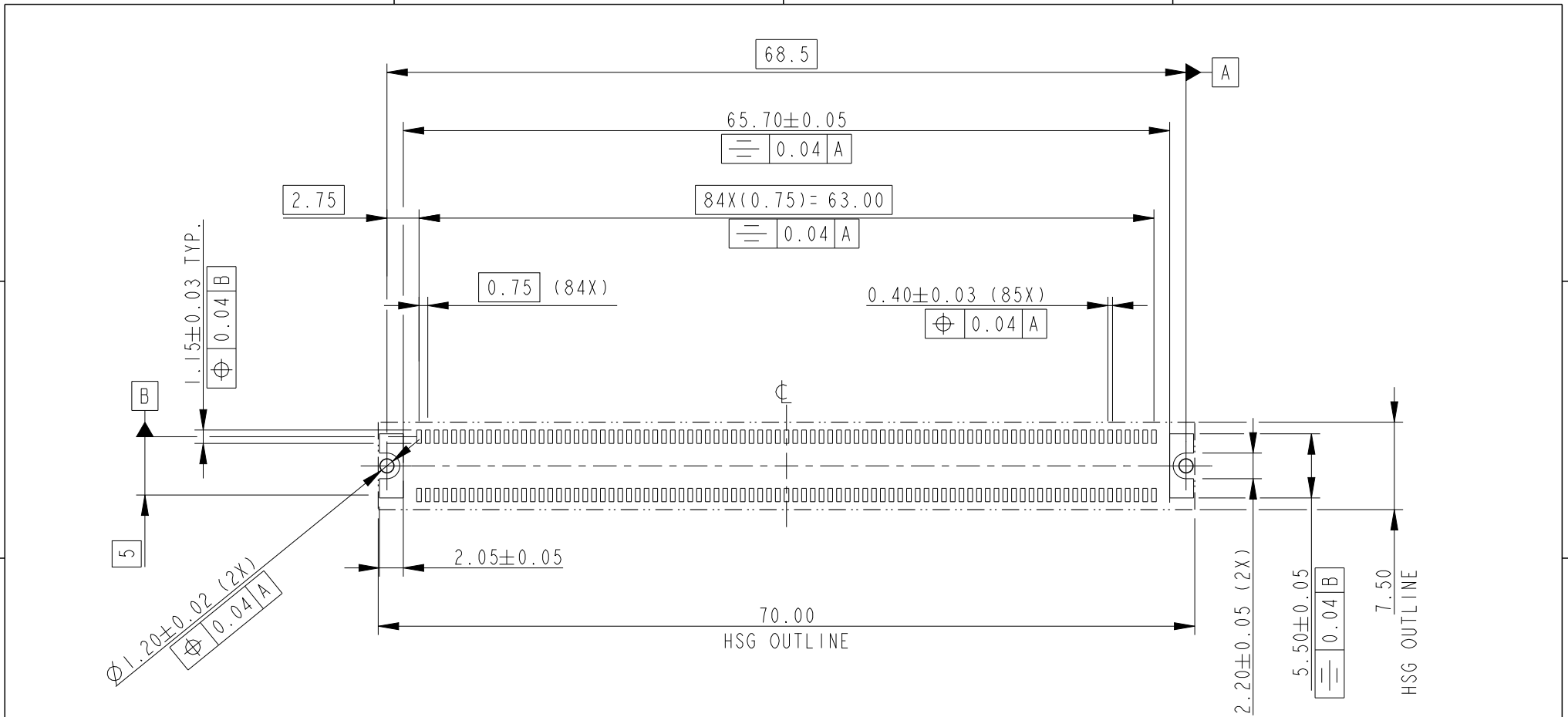
Copyright FCI.

spec ref *		dr <a href="#">w wcadmin</a>		2006/08/30	projection 	MM ←→	size A4	scale 1:1
tolerance std ASME Y14.5		eng <a href="#">Wei Yang</a>		2014/08/27			ecn no ELX-DG-18450-1	
TOLERANCES UNLESS OTHERWISE SPECIFIED		chr <a href="#">Terry Qiu</a>		2014/09/17			rel level <b>Released</b>	
surface ✓		appr <a href="#">Pei-Ming Zheng</a>		2014/09/19	product family		rev	
ASME Y14.5	linear	0.X	±0.3		title SMT TYPE ASS'Y MICRO TCA	dwg no 10058835	<b>H</b>	
		0.XX	±0.20					
	angular	0°	±2°	www.fci.com	cat. no. *	Product - Customer Drw	sheet 3 of 6	

Pro/E File - REV C - 2009-06-09



Copyright FCI.



RECOMMENDED PCB LAYOUT  
(SEE PICMG MICROTCA BASE SPECIFICATION FOR DETAIL)

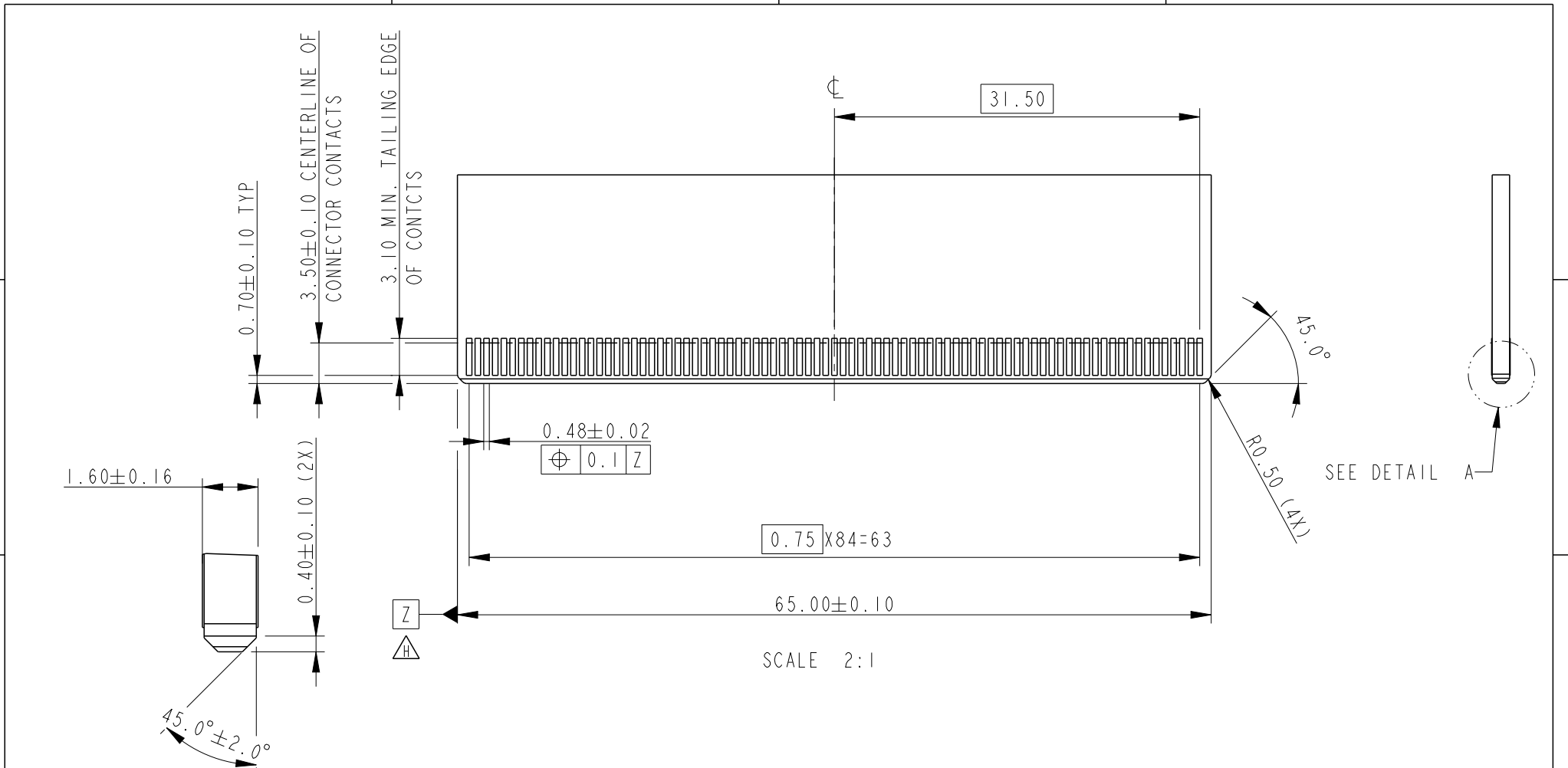
spec ref	*	dr	w wcadmin	2006/08/30	projection	MM	size	A4	scale	1:1
tolerance std	TOLERANCES UNLESS OTHERWISE SPECIFIED	eng	Wei Yang	2014/08/27			←→	ecn no	ELX-DG-18450-1	
ASME Y14.5		chr	Terry Qiu	2014/09/17					rel level	Released
-		appr	Pei-Ming Zheng	2014/09/19		product family				
surface	✓	linear	0.X	±0.3		title	SMT TYPE ASS'Y	dwg no	10058835	rev
ASME Y14.5			0.XX	±0.20						
	angular	0°	±2°							

Pro/E File - REV C - 2009-06-09





Copyright FCI.



DETAIL A  
SCALE 6:1

RECOMMENDED MODULE LAYOUT  
(SEE PICMG ADVANCED MEZZANINE CRAD BASE SPECIFICATION FOR DETAIL)

spec ref	*	dr	w wcadmin	2006/08/30	projection	MM	size	A4	scale	1:1	
tolerance std	TOLERANCES UNLESS OTHERWISE SPECIFIED	eng	Wei Yang	2014/08/27			←→	ecn no	ELX-DG-18450-1		
ASME Y14.5		chr	Terry Qiu	2014/09/17				product family	3G10		rel level
-		appr	Pei-Ming Zheng	2014/09/19		product family		3G10		rel level	Released
surface	✓	linear	0.X	±0.3		title	SMT TYPE ASS'Y	dwg no	10058835	rev	
ASME Y14.5			0.XX	±0.20							www.fci.com
	angular	0°	±2°								

Print File - REV C - 2009-06-09

NOTES:

1. MATERIAL:

HOUSING: HIGH TEMPERATURE, GLASS FILLED UL94V-0 RATED.

TERMINAL: COPPER ALLOY

PLATING: 1.27um NICKEL UNDERPLATE ALL OVER

CONTACT AREA PLATING - SEE PRODUCT NUMBER CODE

SOLDER TAIL: MAT TIN - 2.54um MIN.

SEE PRODUCT NUMBER CODE

2. PRODUCT SPECIFICATION: GS-12-362

3. PACKING SPECIFICATION: GS-14-1047

4. RoHS COMPATIBLE PRODUCT SPECIFICATIONS

a-PLATING:

- "LF" MEANS THE PRODUCT IS LEAD-FREE, 2um MINIMUM MATTE TIN OVER 1.27um MINIMUM NICKEL UNDERPLATE.

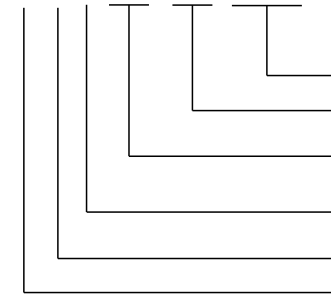
b-MANUFACTURING PROCESS COMPATIBILITY

- THE HOUSING WILL WITHSTAND EXPOSURE TO 260°C±5°C SOLDER BATH TEMPERATURE FOR 5 SECONDS IN A REFLOW SOLDER APPLICATION WITH A 1.6mm MIN THICK CIRCUIT BOARD.

△ 5. A △ SYMBOL WILL BE NEXT TO ANY DIMENSION, VIEW, OR NOTE WHICH HAS BEEN MODIFIED WITH THE CURRENT DRAWING REVISION.

6. MARKING INFORMATION:

P X X X X X X X X



PRODUCTION LINE CODE

DATE CODE THROUGH 01 TO 31

WEEK NUMBER 01 THROUGH 53

YEAR CODE:  
MOST RIGHT OF DIGIT OF PRODUCTION.  
(e.g 2007=7)

MANUFACTURE SITE; 2 FOR DONGGUAN

SOURCE, P FOR CHINA

HEIGHT OF THE MAKING TEXT: IMM MIN

PRODUCT NUMBER CODE  
10058835 - X X X X L F

HOUSING COLOR OPTIONS

- 1-BLACK
- 2-WHITE

PEGS OPTIONS

- 0-PLASTIC PEGS

TERMINAL PLATING OPTIONS

- 0-0.76um Au CONTACT AREA

LEAD FREE

RESERVE

- 0-----WITHOUT MYLAR
- 1-----WITH MYLAR(35X8.0)
- 2-----WITH MYLAR(70X7.5)
- △ 3-----WITH MYLAR(22X7.0)



Copyright FCI.

spec ref *		dr w cadmin		2006/08/30		projection		size A4		scale 1:1	
tolerance std		eng Wei Yang		2014/08/27						ecn no ELX-DG-18450-1	
ASME Y14.5		chr Terry Qiu		2014/09/17						rel level Released	
-		appr Pei-Ming Zheng		2014/09/19		product family 3G10					
surface ✓		linear				title SMT TYPE ASS'Y		dwg no 10058835		rev H	
ASME Y14.5		angular		www.fci.com		cat. no. *		Product - Customer Drw		sheet 6 of 6	
		0.X ±0.3									
		0.XX ±0.20									
		0.XXX ±0.100									
		0° ±2°									