



Chipsmall Limited consists of a professional team with an average of over 10 year of expertise in the distribution of electronic components. Based in Hongkong, we have already established firm and mutual-benefit business relationships with customers from,Europe,America and south Asia,supplying obsolete and hard-to-find components to meet their specific needs.

With the principle of “Quality Parts,Customers Priority,Honest Operation,and Considerate Service”,our business mainly focus on the distribution of electronic components. Line cards we deal with include Microchip,ALPS,ROHM,Xilinx,Pulse,ON,Everlight and Freescale. Main products comprise IC,Modules,Potentiometer,IC Socket,Relay,Connector.Our parts cover such applications as commercial,industrial, and automotives areas.

We are looking forward to setting up business relationship with you and hope to provide you with the best service and solution. Let us make a better world for our industry!



## Contact us

Tel: +86-755-8981 8866 Fax: +86-755-8427 6832

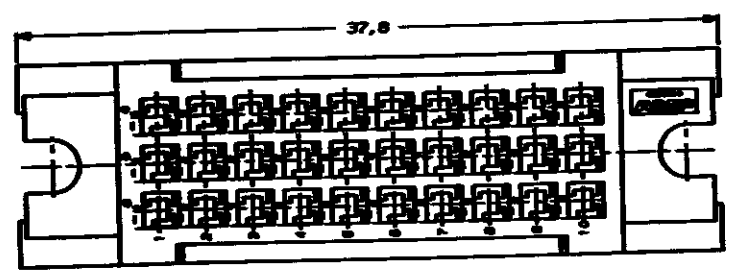
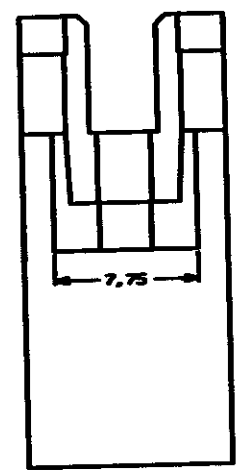
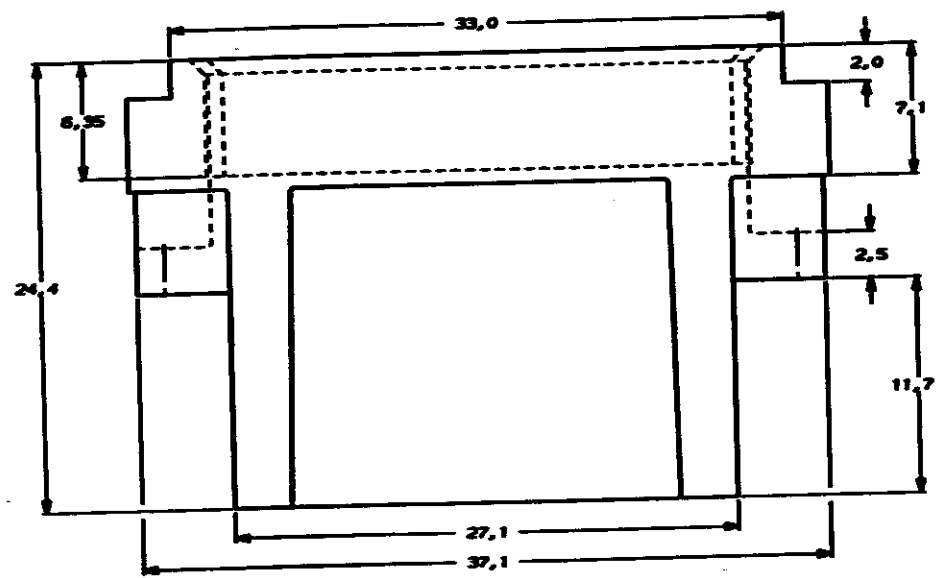
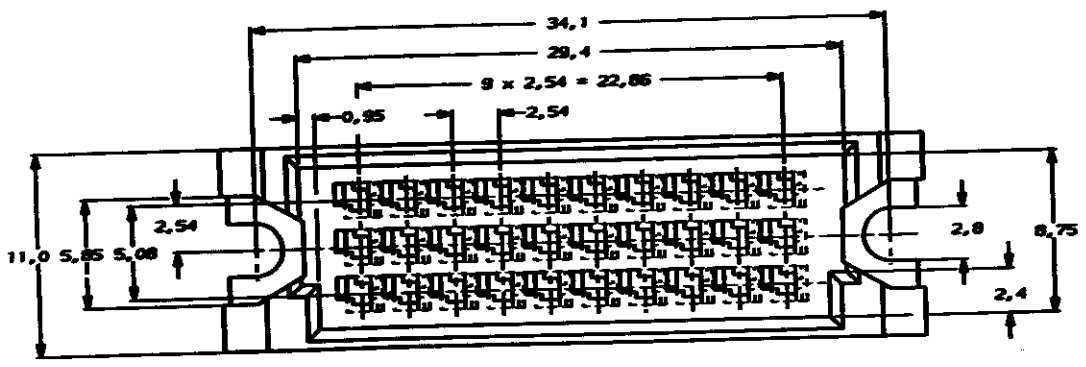
Email & Skype: info@chipsmall.com Web: www.chipsmall.com

Address: A1208, Overseas Decoration Building, #122 Zhenhua RD., Futian, Shenzhen, China



DO NOT SCALE  
DIMENSIONS IN mm

METRIC



DOC. CENTRE  
06 DEC. 1991

GREY		GLASSFILLED POLYESTER		100594-1	
COLOUR		MATERIAL		PARTNUMBER	
-	-	-	-	CUSTOMER DRAWING	
-	-	-	-	BY AMP-HOLLAND B.V.	
-	-	-	-	COPYRIGHT © 1987 AMP-HOLLAND B.V.	
-	-	-	-	ALL RIGHTS RESERVED. AMP PRODUCTS MAY BE	
-	-	-	-	REGISTERED IN U.S. AND FOREIGN AND/OR PATENTS PENDING.	
-	-	-	-	THIS DRAWING IS UNPUBLISHED	
-	-	-	-	UNLESS INDICATED OTHERWISE	
AMP		AMP-HOLLAND B.V.		The Netherlands	
30 POS. I.E.C. TYPE 'C'		MALE COSI HOUSING			
DR. G. LAMMERS	DR. J. B. B. B. B.	APP. J. J. J. J.	REV. L. M.	SHEET	
DATE 21.05.89	DATE 21.05.89	DATE 21.05.89		1 of 1	A2
4	3	2	1		