



Chipsmall Limited consists of a professional team with an average of over 10 year of expertise in the distribution of electronic components. Based in Hongkong, we have already established firm and mutual-benefit business relationships with customers from,Europe,America and south Asia,supplying obsolete and hard-to-find components to meet their specific needs.

With the principle of “Quality Parts,Customers Priority,Honest Operation,and Considerate Service”,our business mainly focus on the distribution of electronic components. Line cards we deal with include Microchip,ALPS,ROHM,Xilinx,Pulse,ON,Everlight and Freescale. Main products comprise IC,Modules,Potentiometer,IC Socket,Relay,Connector.Our parts cover such applications as commercial,industrial, and automotives areas.

We are looking forward to setting up business relationship with you and hope to provide you with the best service and solution. Let us make a better world for our industry!



Contact us

Tel: +86-755-8981 8866 Fax: +86-755-8427 6832

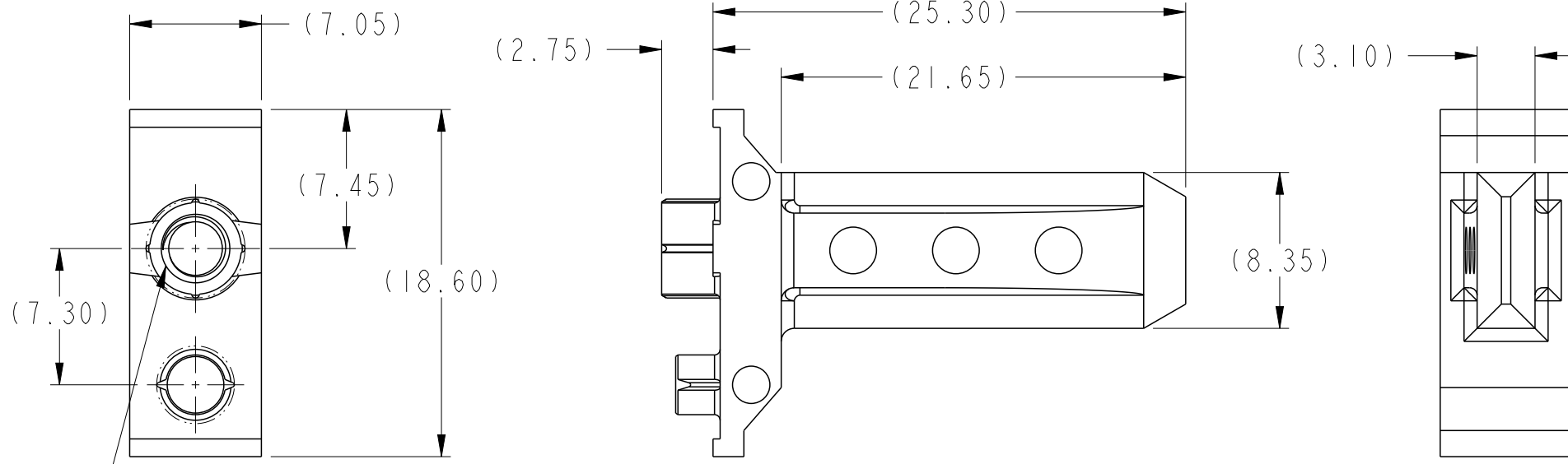
Email & Skype: info@chipsmall.com Web: www.chipsmall.com

Address: A1208, Overseas Decoration Building, #122 Zhenhua RD., Futian, Shenzhen, China



PRODUCT NUMBER

10066832-101LF



M3.5 X 0.6-6H
 B THREAD DEPTH 5.00mm MINIMUM



Copyright FCI.

spec ref		dr	Chen-Hong Tan	2006/05/02	projection 	MM 	size	A4	scale	2:1	
tolerance std ASME Y14.5	TOLERANCES UNLESS OTHERWISE SPECIFIED	eng	N Anandakumar	2013/04/08			ecn no	ELX-S-14283-1			
		chr	-	-			rel level	Released			
surface	3.2	appr	Chen-Hong Tan	2013/04/15	product family	AirMax Accessories					
ASME Y14.5	linear	0.X	±0.3	 www.fci.com	title	7.2mm GUIDE PIN		dwg no 10066832	rev	B	
		0.XX	±0.10			cat. no.	-			Product - Customer Drw	sheet 1 of 2
	angular	0°	±2°								

Pro/E File - REV C - 2009-06-09

1

2

3

4

A

B

C

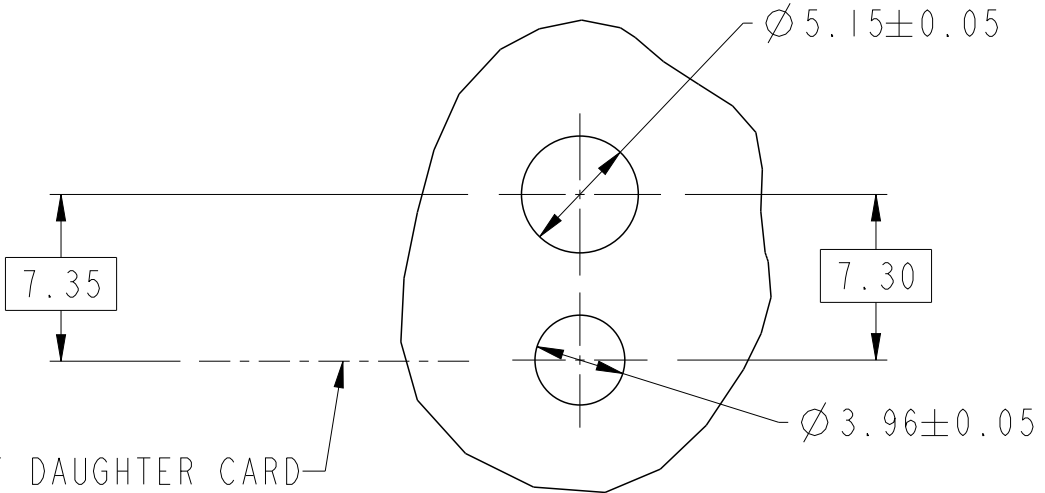
D

A

B

C

D



TOP OF DAUGHTER CARD

SEE NOTE 3 & 4
SCALE 3:1

1. MATERIAL: ZINC ALLOY.
2. FINISH: ZINC YELLOW CHROMATE.
- ③ APPLICATION SPECIFICATION: GS-20-045
- ④ REFER TO CUSTOMER DRAWING 10035911 FOR INFORMATION REGARDING PCB LAYOUT OF POWER AND GUIDE MODULES RELATIVE TO SIGNAL MODULES.
5. THIS PRODUCT MEETS EUROPEAN UNION DIRECTIVES AND OTHER COUNTRY REGULATIONS AS DESCRIBED IN GS-22-008
6. PACKAGING MEETS GS-14-920 LEAD FREE LABELING SPECIFICATION.
7. A \triangle B SYMBOL WILL BE NEXT TO ANY DIMENSION, VIEW, OR NOTE WHICH HAS BEEN MODIFIED WITH THE CURRENT DRAWING REVISION.



Copyright FCI.

spec ref		dr Chen-Hong Tan		2006/05/02		projection 	MM 	size	A4	scale	3:10		
tolerance std ASME Y14.5	TOLERANCES UNLESS OTHERWISE SPECIFIED		eng N Anandakumar		2013/04/08			ecn no		ELX-S-14283-1			
			chr -		-			rel level		Released			
surface $\sqrt{3.2}$		linear		0.X		± 0.3		product family		AirMax VS			
				0.XX		± 0.10				rel level		Released	
				0.XXX		± 0.050				dwg no		10066832	
ASME Y14.5		angular		0°		$\pm 2^\circ$		title		7.2mm GUIDE PIN			
								cat. no.		-			
								Product - Customer Drw		sheet 2 of 2			

Print File - REV C - 2009-06-09

1

2

3

4

PDS: Rev :B

STATUS:Released

Printed: Apr 15, 2013