



Chipsmall Limited consists of a professional team with an average of over 10 year of expertise in the distribution of electronic components. Based in Hongkong, we have already established firm and mutual-benefit business relationships with customers from,Europe,America and south Asia,supplying obsolete and hard-to-find components to meet their specific needs.

With the principle of “Quality Parts,Customers Priority,Honest Operation,and Considerate Service”,our business mainly focus on the distribution of electronic components. Line cards we deal with include Microchip,ALPS,ROHM,Xilinx,Pulse,ON,Everlight and Freescale. Main products comprise IC,Modules,Potentiometer,IC Socket,Relay,Connector.Our parts cover such applications as commercial,industrial, and automotives areas.

We are looking forward to setting up business relationship with you and hope to provide you with the best service and solution. Let us make a better world for our industry!



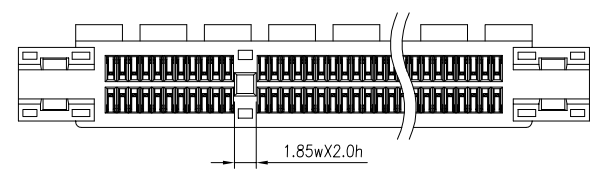
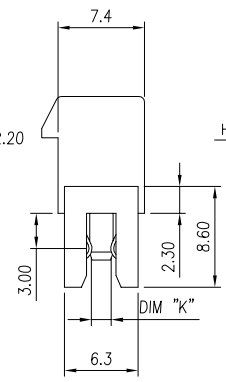
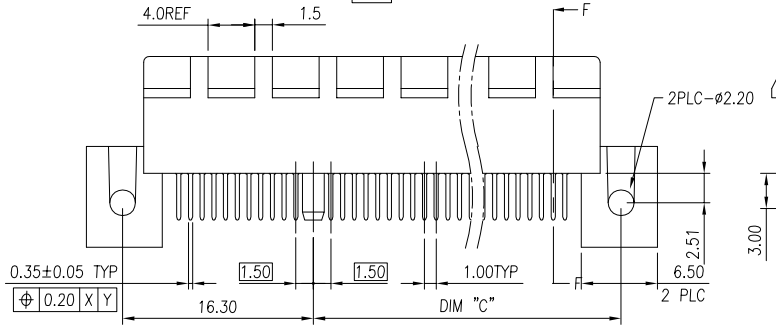
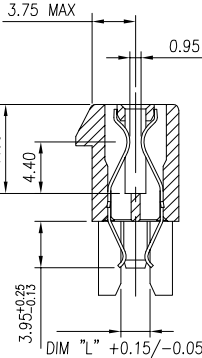
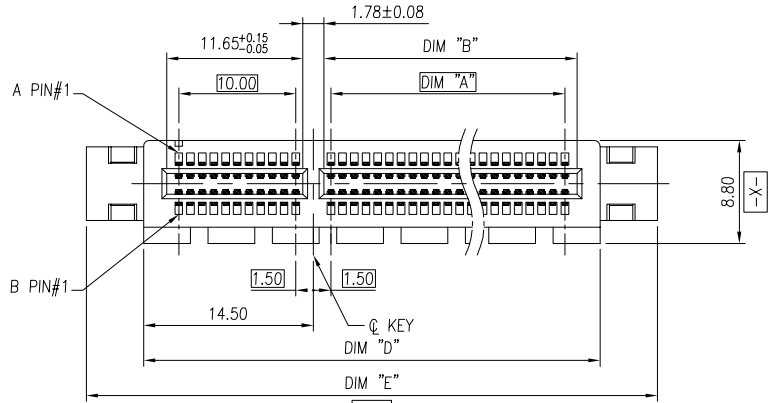
Contact us

Tel: +86-755-8981 8866 Fax: +86-755-8427 6832

Email & Skype: info@chipsmall.com Web: www.chipsmall.com

Address: A1208, Overseas Decoration Building, #122 Zhenhua RD., Futian, Shenzhen, China





NOTES:

1. MATERIAL:
 - 1.1 HOUSING: THERMOPLASTIC, HIGH TEMP., UL94V-0;
 - 1.2. CONTACTS: COPPER ALLOY.
2. CONTACT FINISH:

SELECTED GOLD PLATING ON CONTACT AREA.
3. NO TIE BAR PERMITTED FROM CARD EDGE TO LEADING EDGE OF PAD FOR PINS A1 AND PIN No. "F"
4. CHAMFER EDGES MUST BE FREE OF CUTTING EDGE.
5. FREQUENCY & LOCATION AT SUPPLIER DISCRETION. RIDGE MAY BE CONTINUOUS WITH NO BREAKS.
6. PRODUCT SPEC.: GS-12-233
PACKING SPEC: GS-14-910
7. THE HSG WILL WITHSTAND ESPOSURE TO 260 +/-5C SOLDER BATH TEMP. FOR 5 SEC. IN A REFLOW SOLDER APPLICATION.

PRODUCT NUMBER CODE

10069690 -X 0 X X X LF

HOUSING COLOR OPTIONS: 0-NATURAL, 1-BLACK, RESERVE

LEAD FREE

PACKAGING OPTIONS: T:TRAY PACKAGING (ONLY 98P WITH CAP; 36P,64P,164P WITHOUT CAP), P:TRAY PACKAGING WITH CAP (FOR 36P,64P AND 164P ONLY)

POS OPTIONS: 0-36, 1-64, 2-98, 3-164

TERMINAL PLATING OPTIONS: 0-50u" Ni UNDERPLATE, 30u" Au CONTACT AREA, 100u" MATT TIN TAIL AREA; 1-50u" Ni UNDERPLATE, 15u" Au CONTACT AREA, 100u" MATTE TIN TAIL AREA; 2-50u" Ni UNDERPLATE, GOLD FLASH CONTACT AREA, 100u" MATT TIN TAIL AREA

PCB THICKNESS OPTION: 0- 2.08 MM, 1- 2.30 MM

SECTION F-F

DIMENSIONS					
POSITION	A ±0.20	B $\frac{+0.15}{-0.05}$	C ±0.20	D ±0.23	E ±0.30
36	6	7.65	12.30	25.00	34.8
64	20	21.65	26.30	39.00	48.8
98	37	38.65	43.30	56.00	65.8
164	70	71.65	76.30	89.00	98.8

DIMENSION "k"	DIMENSION "L"	PCB THICKNESS (DIM "J")
1.60	2.50	2.08 MM
1.90	2.50	12.30 MM

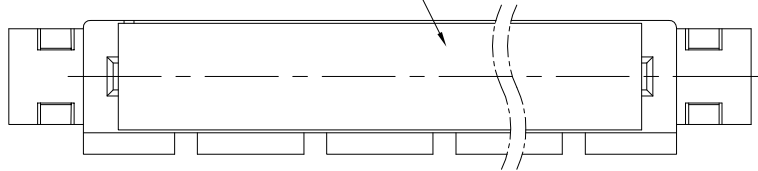
mat'l. code		surface		tolerance	projection	product family	
-		-		ASME_Y14.5	MM	PCI_EXPRESS	
ltr	ecn no	dr	date	tolerances unless otherwise specified		title	
A	T07-1077	S.Lin	03/13/07	angles	MM	PCI_EXPRESS_CARD_EDGE_GEN3	
B	T07-1098	S.Lin	06/08/07	radius		STRADDLE_MOUNT_ASS'Y	
C	T00-1001	J.H	1/3/08	±2°	scale N/A	dwg no	
D	DG-23732	LZH	4/05/16	dr		sheet 1 of 4 size	
				engr		10069690	
				chr		A4	
				appc		type	
						CUSTOMER Drawing	
sheet index	revision	D					
	sheet	4					



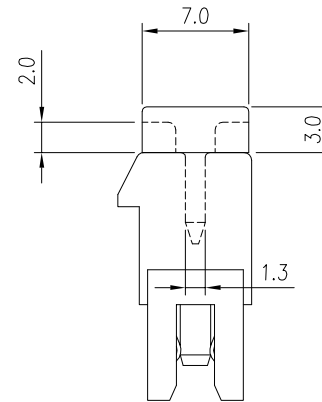
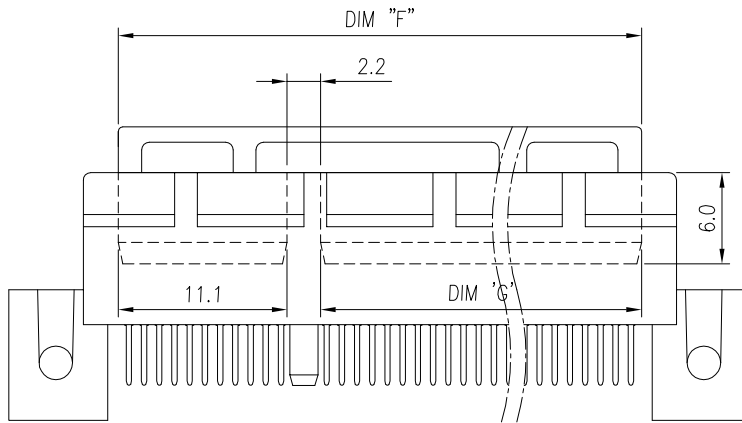
NOTES:

- 1. MATERIAL:
INSERT CAP: THERMOPLASTIC, HIGH TEMP.,
UL94V-0; BLACK COLOR.
- 2. THE INSERT CAP SHALL BE REMOVED OUT
AFTER RE-FLOWED PROCESS.

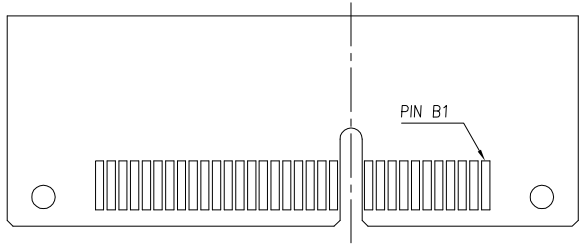
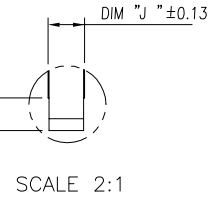
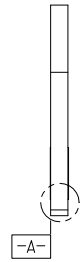
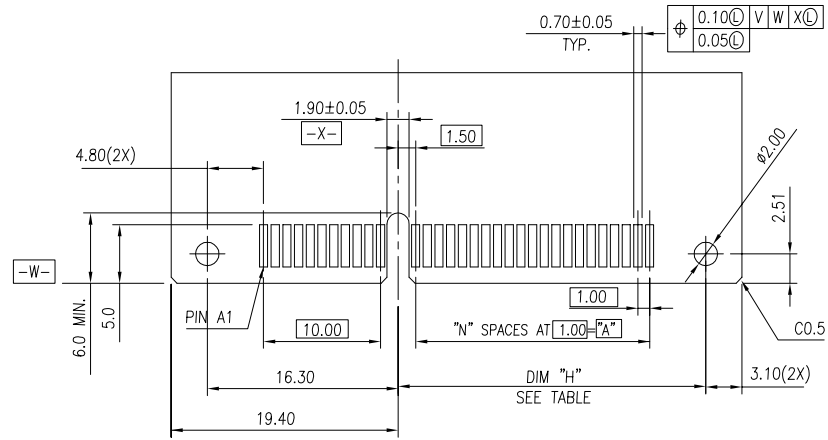
INSERT CAP



DIMENSIONS		
POSITION	F	G
36	20.4	7.1
64	34.4	21.1
98	51.4	38.1
164	84.4	71.1

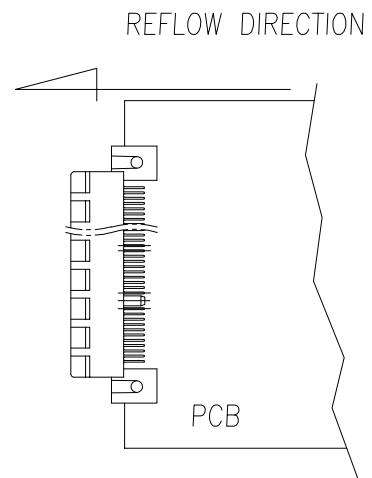


mat'l. code		surface		tolerance		projection		product family	
-		-		ASME_Y14.5				PCI_EXPRESS	
ltr		ecn no		dr		date		title	
								PCI_EXPRESS_CARD_EDGE_GEN3 STRADDLE_MOUNT_ASS'Y	
				angles		tolerances unless otherwise specified		MM	
				±2°		.0±.030		scale N/A	
						.00±.020		dwg no	
						.000±.010		sheet 2 of 4	
		dr		ZHENHUA_LIU		2016-03-25		size	
		enr		ZHENHUA_LIU		2016-03-25		A4	
		chr		STONE_LI		2016-03-25		10069690	
		app		PM_ZHENG		2016-03-25		type	
								CUSTOMER Drawing	
sheet index		revision sheet		D					
4		4		4					



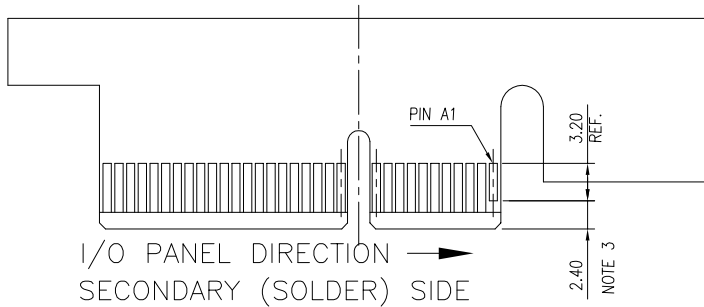
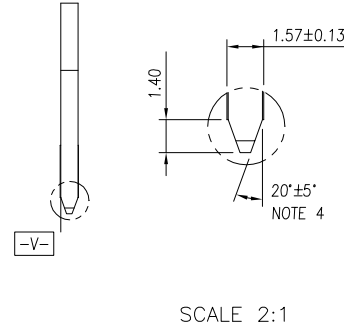
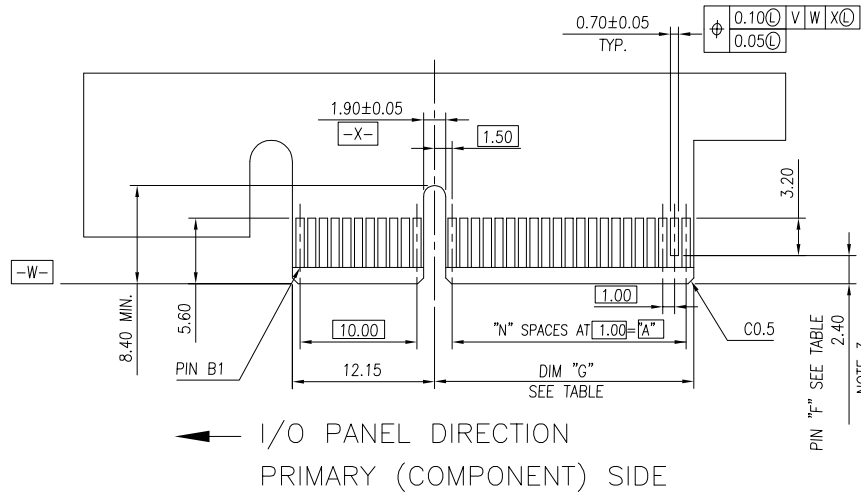
RECOMMEND OF PCB DIMENSIONS

#	POS REF.	N	DIM "H"
36	6	12.30	
64	20	26.30	
98	37	43.30	
164	70	76.30	



RECOMMEND OF REFLOW DIRECTION

mat'l. code		surface		tolerance		projection		product family	
-		-		ASME_Y14.5				PCI_EXPRESS	
ltr		ecn no		dr		date		title	
								PCI_EXPRESS_CARD_EDGE_GEN3 STRADDLE_MOUNT_ASS'Y	
								MM	
								scale N/A	
								dwg no	
								sheet 3 of 4	
								size	
								A4	
								type	
								CUSTOMER Drawing	
sheet index		revision sheet		D					
4		4		4					



ADD-IN CARD EDGE-FINGER DIMENSIONS

#	POS	REF.	N	DIM "G" ±0.20	"F"
36	6		6	8.15	B17
64	20		20	22.15	B31
98	37		37	39.15	B48
164	70		70	72.15	B81

mat'l. code		surface		tolerance		projection		product family							
-		-		ASME_Y14.5				PCI_EXPRESS							
ltr		ecn no		dr		date		title							
								PCI_EXPRESS_CARD_EDGE_GEN3 STRADDLE_MOUNT_ASS'Y							
				angles		<table border="1"> <tr> <td>line</td> <td>.0±.020</td> </tr> <tr> <td>loc</td> <td>.00±.013</td> </tr> <tr> <td>total</td> <td>.000±.005</td> </tr> </table>		line	.0±.020	loc	.00±.013	total	.000±.005	MM	
line	.0±.020														
loc	.00±.013														
total	.000±.005														
				±2°		scale N/A		dwg no							
				dr		2016-03-25		sheet 4 of 4							
				engr		2016-03-25		size							
				chr		2016-03-25		A4							
				appd		2016-03-25		10069690							
sheet index		revision		D				type							
4		sheet		4				CUSTOMER Drawing							