



Chipsmall Limited consists of a professional team with an average of over 10 year of expertise in the distribution of electronic components. Based in Hongkong, we have already established firm and mutual-benefit business relationships with customers from,Europe,America and south Asia,supplying obsolete and hard-to-find components to meet their specific needs.

With the principle of “Quality Parts,Customers Priority,Honest Operation,and Considerate Service”,our business mainly focus on the distribution of electronic components. Line cards we deal with include Microchip,ALPS,ROHM,Xilinx,Pulse,ON,Everlight and Freescale. Main products comprise IC,Modules,Potentiometer,IC Socket,Relay,Connector.Our parts cover such applications as commercial,industrial, and automotives areas.

We are looking forward to setting up business relationship with you and hope to provide you with the best service and solution. Let us make a better world for our industry!



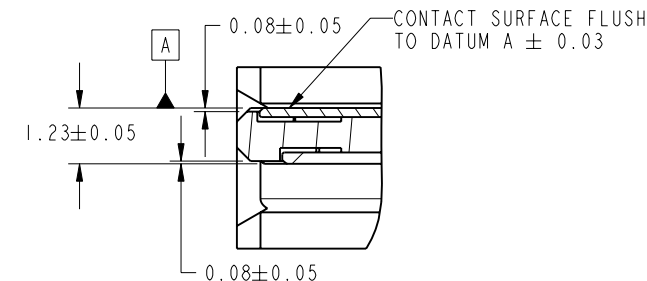
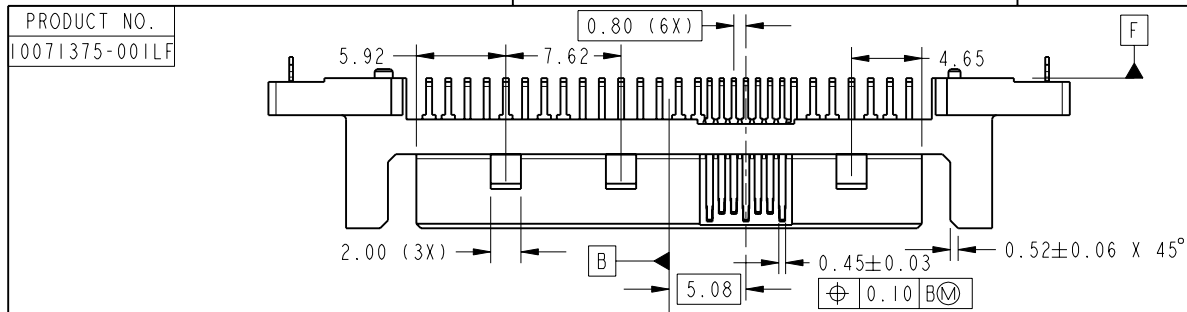
## Contact us

Tel: +86-755-8981 8866 Fax: +86-755-8427 6832

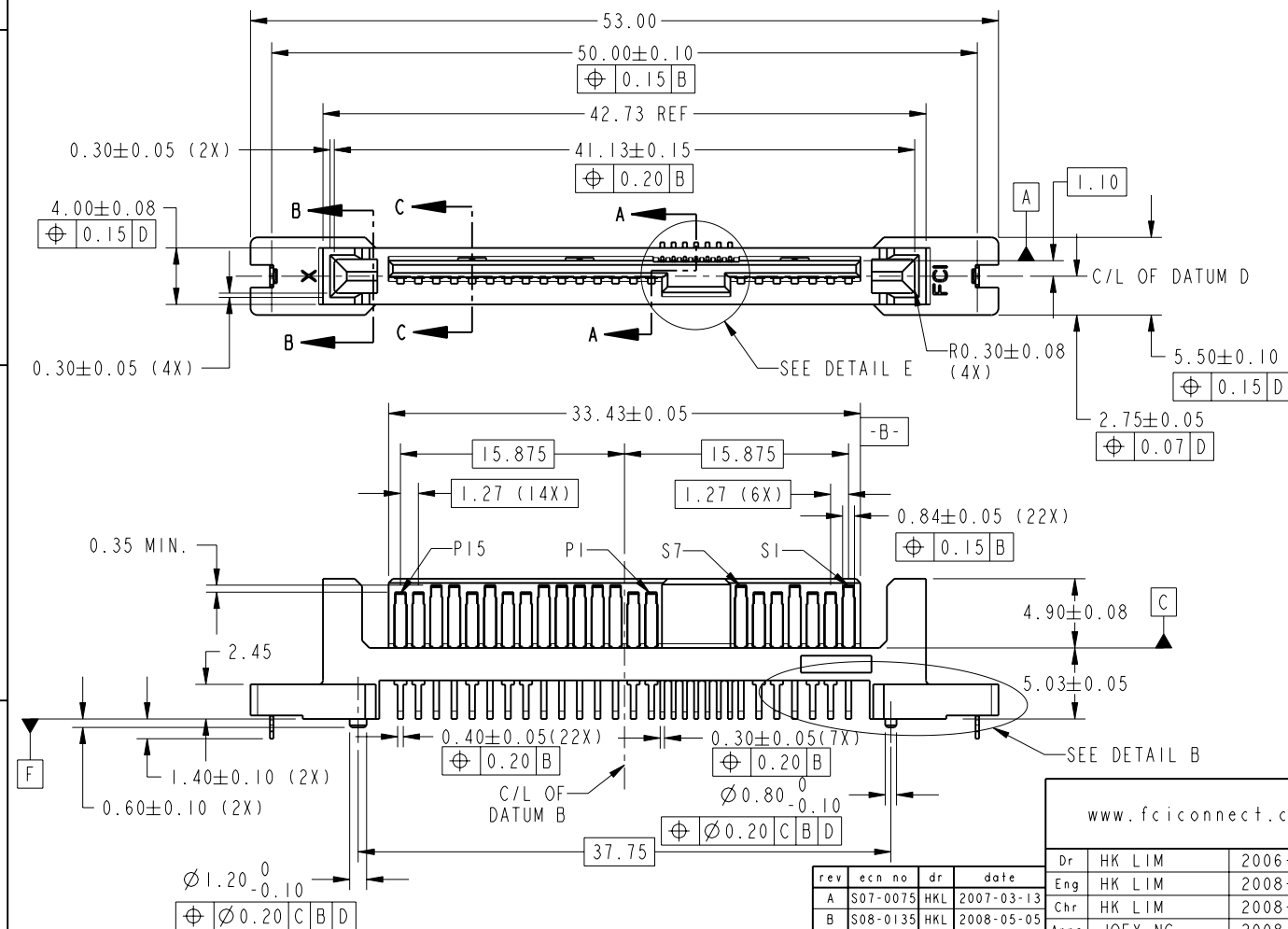
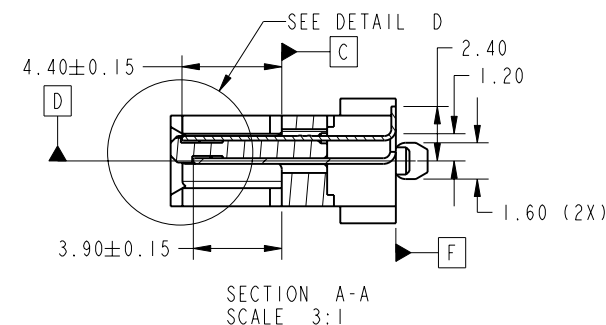
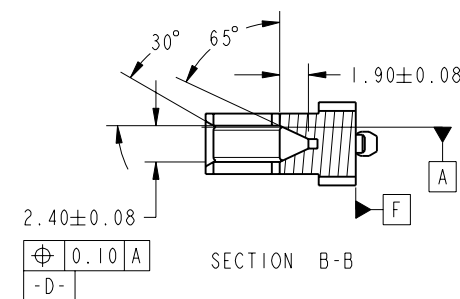
Email & Skype: [info@chipsmall.com](mailto:info@chipsmall.com) Web: [www.chipsmall.com](http://www.chipsmall.com)

Address: A1208, Overseas Decoration Building, #122 Zhenhua RD., Futian, Shenzhen, China








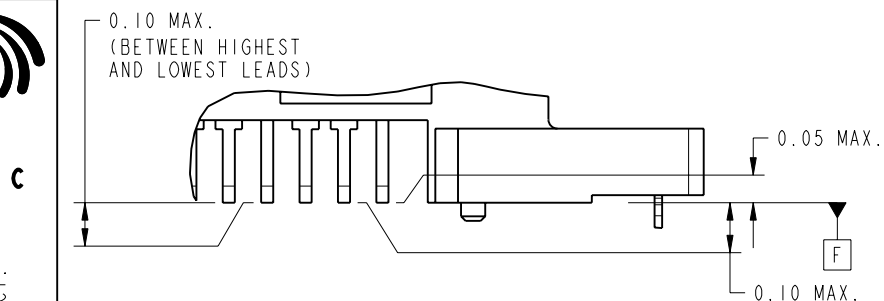
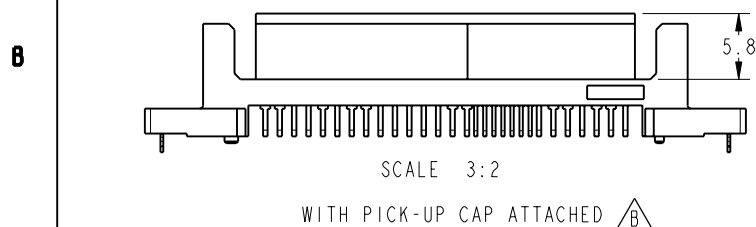
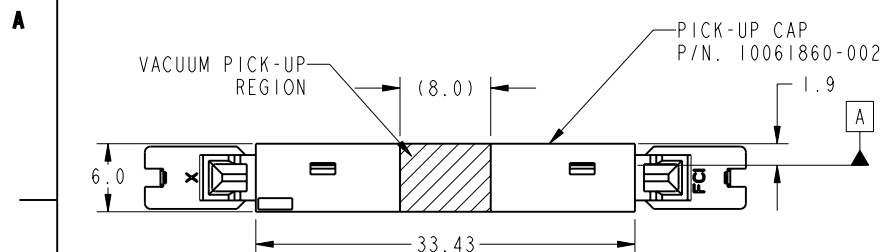
DETAIL D  
SCALE 6:1



rev	ecn no	dr	date
A	S07-0075	HKL	2007-03-13
B	S08-0135	HKL	2008-05-05
-	-	-	-
-	-	-	-

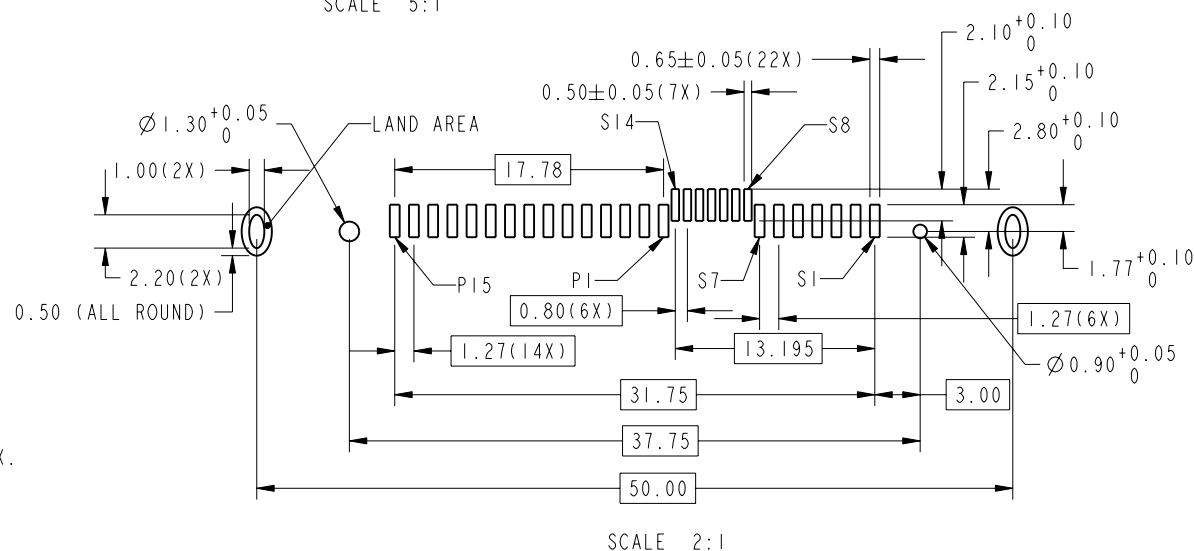
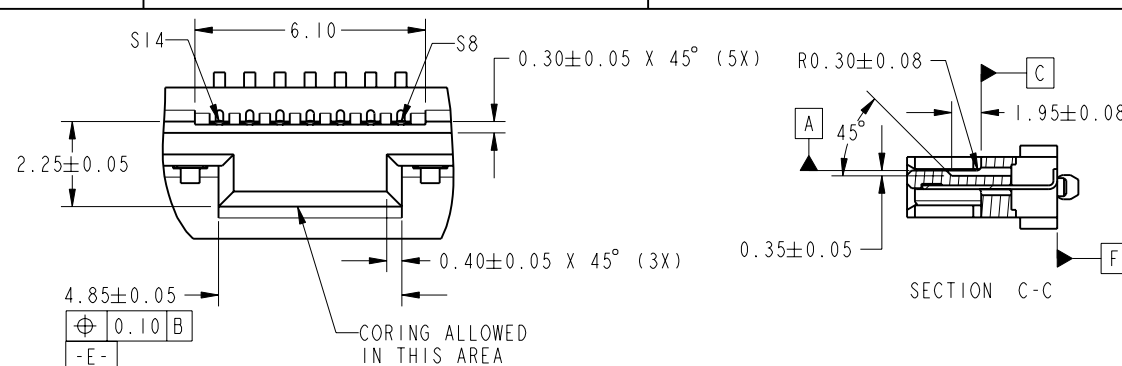
www.fciconnect.com			surface ASME Y14.5 ✓		tolerance std ASME Y14.5 -		projection 		MM 	
			TOLERANCES UNLESS OTHERWISE SPECIFIED							
Dr	HK LIM	2006-09-01	ANGULAR	LINEAR	0.X	±0.25	size A4	Scale 2:1		
Eng	HK LIM	2008-05-05			0.XX	±0.20				
Chr	HK LIM	2008-05-05			0.XXX	±0.050				
Appr	JOEY NG	2008-05-05	Product family					ECN S08-0135 Spec ref		
			title SAS PLUG VERTICAL SMT ASSY				dwg no 10071375			Rev B
catalog no										

PRODUCT NO.	WITH PICK-UP CAP	PACKAGING
10071375-001LF	NO	TRAY
10071375-001CLF	YES	



#### NOTES:

1. MATERIAL:  
HOUSING & CAP: HIGH TEMPERATURE PLASTIC, BLACK, UL94V-0  
CONTACT: COPPER ALLOY  
HOLD DOWN: COPPER ALLOY
2. FINISH:  
1.27μm MIN NICKEL UNDERPLATE OVERALL,  
2.54μm MIN TIN (LEAD-FREE) ON SOLDER TAIL,  
0.76μm MIN GOLD ON CONTACT AREA
3. THIS PRODUCT MEETS EUROPEAN UNION DIRECTIVES AND OTHER  
COUNTRY REGULATIONS AS DESCRIBED IN GS-22-008
4. THE HOUSING WILL WITHSTAND EXPOSURE TO 260°C PEAK TEMPERATURE  
FOR 10 SECONDS IN A CONVECTION, INFRA-RED OR VAPOR PHASE REFLOW OVEN
5. PART WITH PICK-UP CAP, P/N. XXXXXXXX-XXXCLF
6. A SYMBOL B WILL BE NEXT TO ANY DIMENSION, VIEW OR NOTE WHICH  
HAS BEEN MODIFIED WITH THE CURRENT DRAWING REVISION



RECOMMENDED SOLDER PAD LAYOUT



title	SAS PLUG	dwg no	10071375	Rev.	B
	VERTICAL SMT ASSY				
catalog no		CUSTOMER		sheet 2 of 2	