



Chipsmall Limited consists of a professional team with an average of over 10 year of expertise in the distribution of electronic components. Based in Hongkong, we have already established firm and mutual-benefit business relationships with customers from,Europe,America and south Asia,supplying obsolete and hard-to-find components to meet their specific needs.

With the principle of “Quality Parts,Customers Priority,Honest Operation,and Considerate Service”,our business mainly focus on the distribution of electronic components. Line cards we deal with include Microchip,ALPS,ROHM,Xilinx,Pulse,ON,Everlight and Freescale. Main products comprise IC,Modules,Potentiometer,IC Socket,Relay,Connector.Our parts cover such applications as commercial,industrial, and automotives areas.

We are looking forward to setting up business relationship with you and hope to provide you with the best service and solution. Let us make a better world for our industry!



Contact us

Tel: +86-755-8981 8866 Fax: +86-755-8427 6832

Email & Skype: info@chipsmall.com Web: www.chipsmall.com

Address: A1208, Overseas Decoration Building, #122 Zhenhua RD., Futian, Shenzhen, China

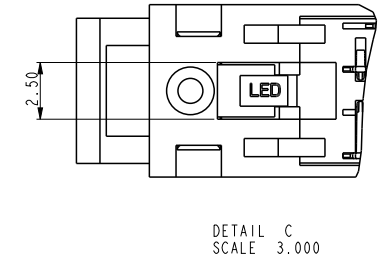
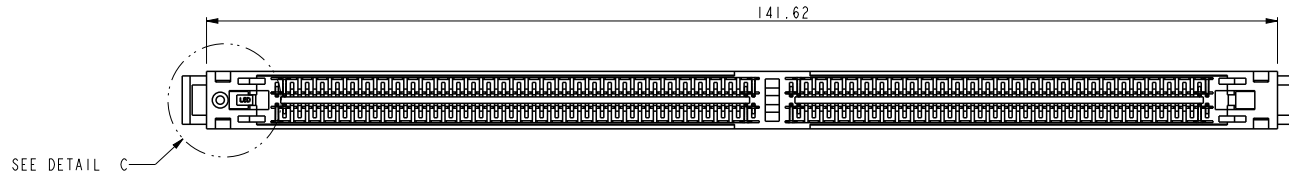
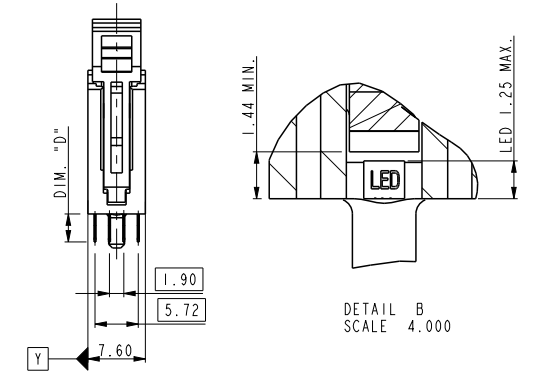
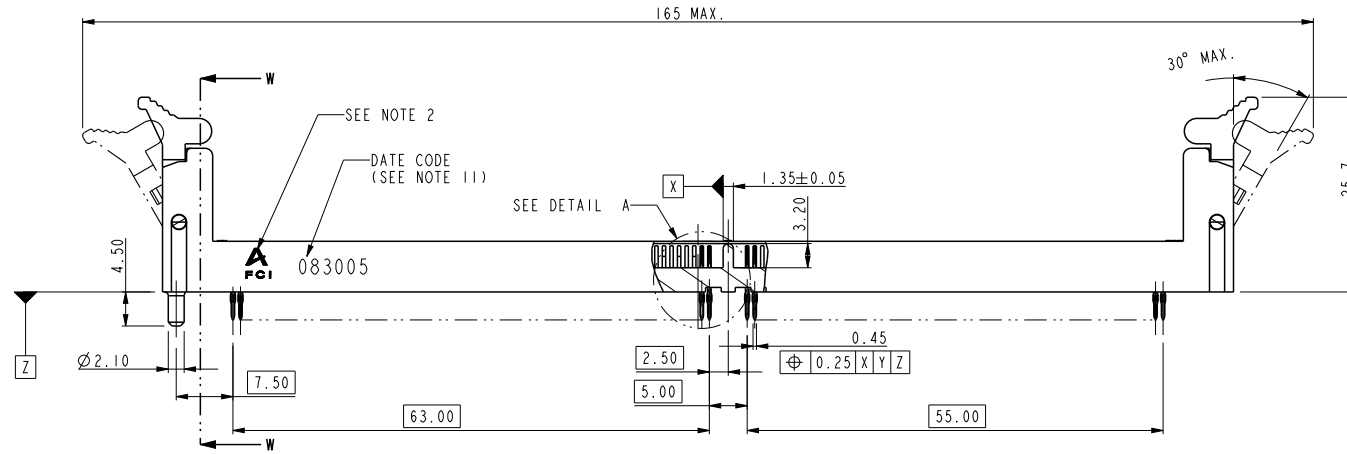
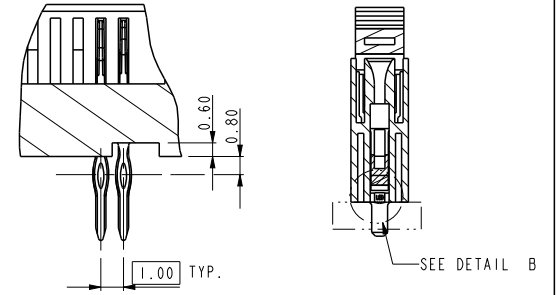
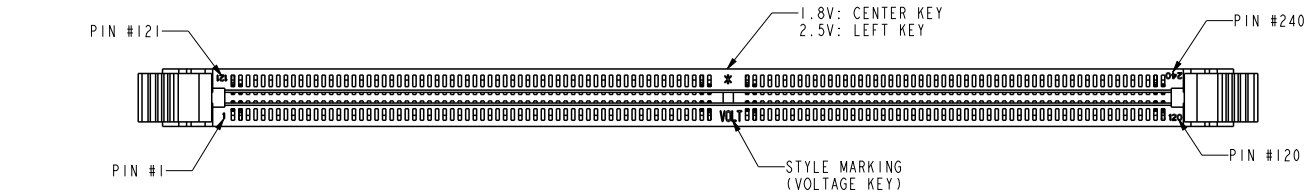


A

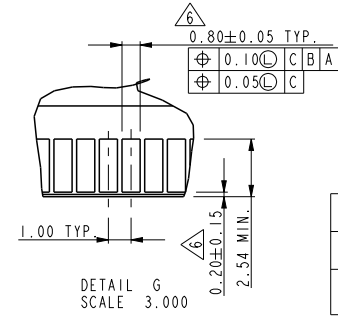
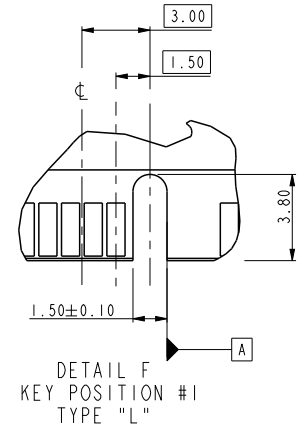
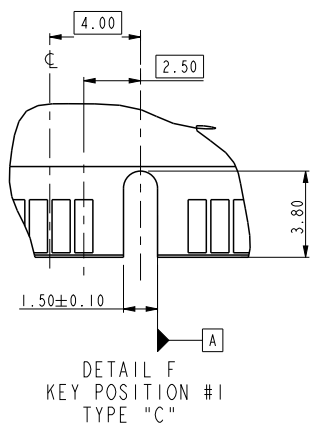
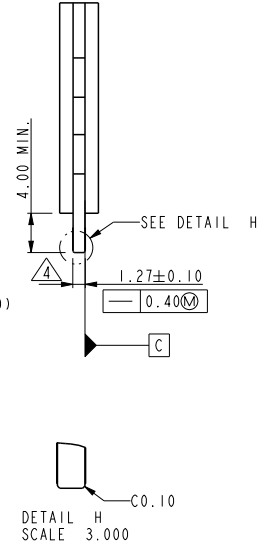
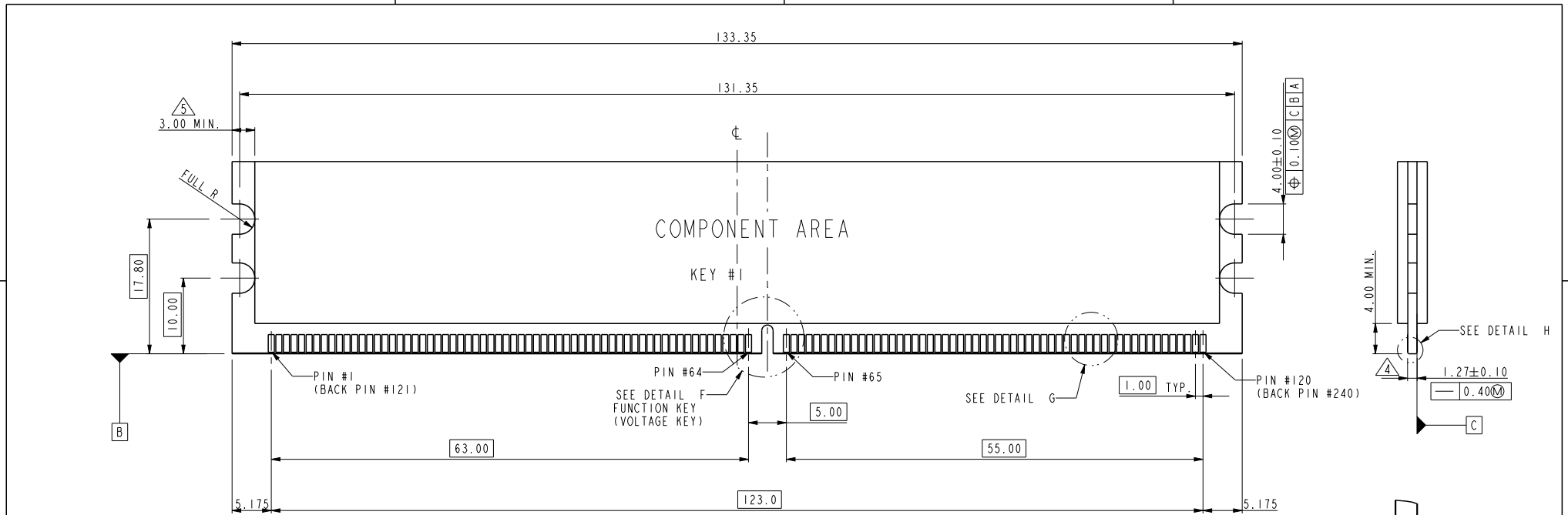
B

C

D



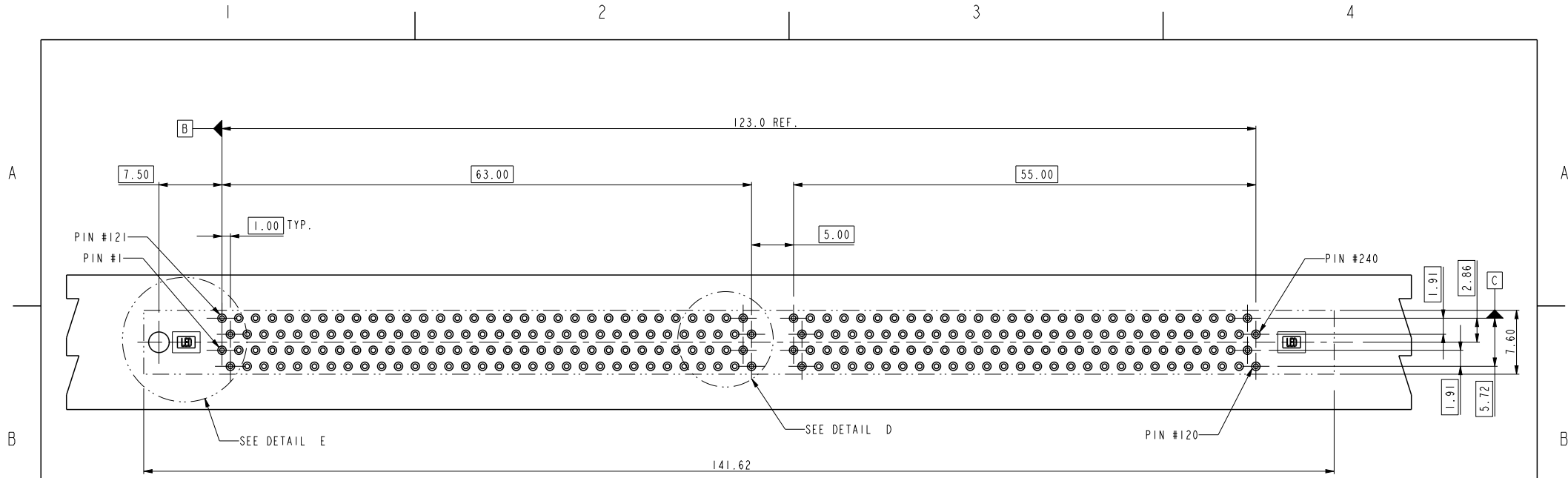
spec ref		SPEC_REF:5		dr	Nickor Zuo	2011/08/23	projection	MM	size	A4	scale	0.500
tolerance std		TOLERANCES UNLESS OTHERWISE SPECIFIED		eng	Jeny Ren	2018/01/24			ecn no	ELX-DG-28708-1		
ISO 406 ISO 1101				chr	-	-				rel level		Released
surface		linear	0.X	±0.38	appr	Nickor Zuo	2018/01/29	product family		dwg no	10072264	
ISO 1302			0.XX	±0.25		product family		Product - Customer Drw			rev	C
		angular	0°	±2°	www.fci.com		cat. no.	*	sheet 1 of 4			



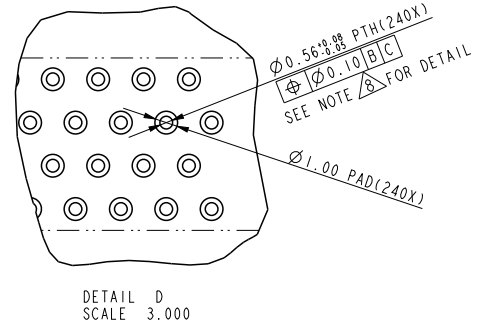
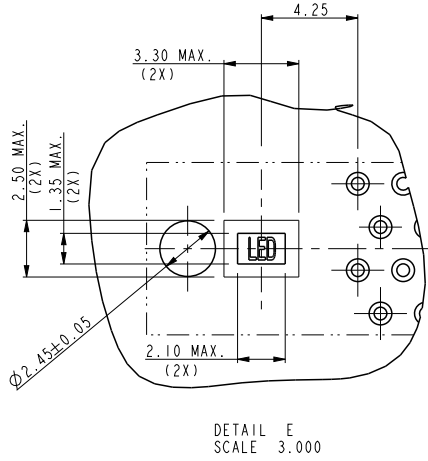
SUB KEY POS #1	DESCRIPTION
TYPE "L"	2.5 VOLTAGE
TYPE "C"	1.8 VOLTAGE

spec ref	*	dr	Nickor Zuo	2011/08/23	projection	MM	size	A4	scale	0.500										
tolerance std	ISO 406 ISO 1101	eng	Jeny Ren	2018/01/24			ecn no	ELX-DG-28708-1												
TOLERANCES UNLESS OTHERWISE SPECIFIED		chr	-	-			rel level	Released												
surface	<table border="1"> <tr> <td>linear</td> <td>0.X</td> <td>±0.38</td> </tr> <tr> <td></td> <td>0.XX</td> <td>±0.25</td> </tr> <tr> <td></td> <td>0.XXX</td> <td>±0.13</td> </tr> <tr> <td>angular</td> <td>0°</td> <td>±2°</td> </tr> </table>	linear	0.X	±0.38		0.XX	±0.25		0.XXX	±0.13	angular	0°	±2°	appr	Nickor Zuo	2018/01/29	product family	DDR11 240P PRESS-FIT ASS'Y		
linear	0.X	±0.38																		
	0.XX	±0.25																		
	0.XXX	±0.13																		
angular	0°	±2°																		
ISO 1302		Amphenol FCI	www.fci.com	cat. no.	*	Product - Customer Drw	dwg no	10072264		rev	C									
							sheet 2 of 4													

Creo File - REV E - 2016-02-12



RECOMMEND CIRCUIT BOARD HOLE LAYOUT



spec ref	*	dr	Nickor Zuo	2011/08/23	projection	MM ←→	size	A4	scale	0.500
tolerance std	TOLERANCES UNLESS OTHERWISE SPECIFIED	eng	Jeny Ren	2018/01/24			ecn no	ELX-DG-28708-1		
ISO 406 ISO 1101		chr	-	-			rel level	Released		
surface		appr	Nickor Zuo	2018/01/29	product family	rev	C			
ISO 1302		linear	Amphenol FCI www.fci.com		title	cat. no.	* Product - Customer Drw	sheet 3 of 4		
	angular	0°							±2°	
	0.X	±0.38								
		0.XX	±0.25							
		0.XXX	±0.13							
		title		DDRII 240P PRESS-FIT ASS'Y		dwg no		10072264		

