



Chipsmall Limited consists of a professional team with an average of over 10 year of expertise in the distribution of electronic components. Based in Hongkong, we have already established firm and mutual-benefit business relationships with customers from,Europe,America and south Asia,supplying obsolete and hard-to-find components to meet their specific needs.

With the principle of “Quality Parts,Customers Priority,Honest Operation,and Considerate Service”,our business mainly focus on the distribution of electronic components. Line cards we deal with include Microchip,ALPS,ROHM,Xilinx,Pulse,ON,Everlight and Freescale. Main products comprise IC,Modules,Potentiometer,IC Socket,Relay,Connector.Our parts cover such applications as commercial,industrial, and automotives areas.

We are looking forward to setting up business relationship with you and hope to provide you with the best service and solution. Let us make a better world for our industry!



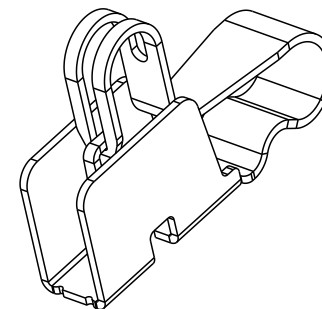
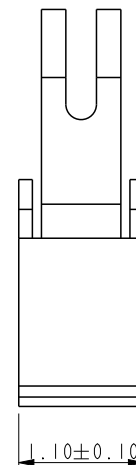
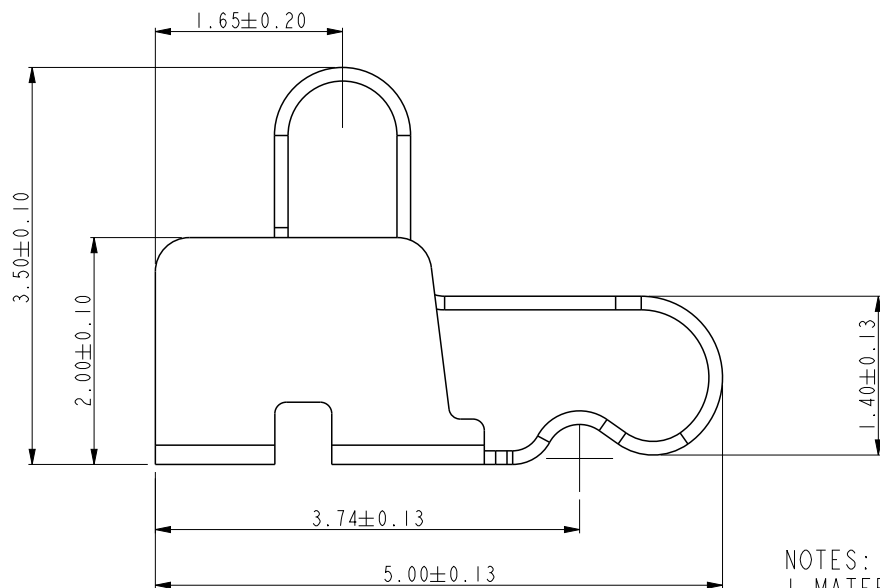
Contact us

Tel: +86-755-8981 8866 Fax: +86-755-8427 6832

Email & Skype: info@chipsmall.com Web: www.chipsmall.com

Address: A1208, Overseas Decoration Building, #122 Zhenhua RD., Futian, Shenzhen, China





NOTES:

1. MATERIAL: BERYLLIUM COPPER ALLOY.

2. CONTACT PLATING:

CONTACT AREA: PLATING 1um Au or GXT OVER 1.27/3.0um Ni UNDERPLATED.

SOLDER AREA: PLATING 0.05 TO 0.15um Au OVER 1.27/3.0um Ni UNDERPLATED.

3. PACKAGING SPECIFICATION: GS-14-1216.

4. PRODUCT SPECIFICATION: GS-12-500.

5. PART NUMBER DESCRIPTION:

10076432-0 0 X X X

LF: LEAD FREE

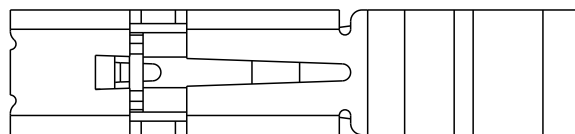
R: TAPE AND REEL

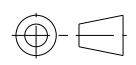
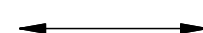
CONTACT PLATING:

1: 1um Au

9: 1um GXT (PALLADIUM NICKEL ALLOY WITH GOLD FLASH)

6. A  SYMBOL WILL BE NEXT TO ANY DIMENSION, VIEW, OR NOTE WHICH HAS BEEN MODIFIED WITH CURRENT DRAWING VERSION.



spec ref	*	dr	w wadmin	2008/06/10	projection	mm	size	A4	scale	1.000
tolerance std	TOLERANCES UNLESS OTHERWISE SPECIFIED	eng	Qin De-Feng	2013/07/28			ecn no	ELX-DG-15215-1	rel level	Released
		chr	Young Ou	2013/07/30	product family	-	rel level	Released		
		appr	Pei-Ming Zheng	2013/07/30						
surface	✓	linear	0.X	±0.50	<div>FCI</div> <div>www.fci.com</div>			<div>10076432</div>		<div>rev</div> <div>C</div>
			0.XX	±0.30						
			0.XXX	±0.15						
		angular	0°	±5°						
		title		ANTENNA CONNECTOR		dwg no				
				CONTACT						
		cat. no.		10076432		Product - Customer Drw		sheet 1 of 1		