



Chipsmall Limited consists of a professional team with an average of over 10 year of expertise in the distribution of electronic components. Based in Hongkong, we have already established firm and mutual-benefit business relationships with customers from,Europe,America and south Asia,supplying obsolete and hard-to-find components to meet their specific needs.

With the principle of “Quality Parts,Customers Priority,Honest Operation,and Considerate Service”,our business mainly focus on the distribution of electronic components. Line cards we deal with include Microchip,ALPS,ROHM,Xilinx,Pulse,ON,Everlight and Freescale. Main products comprise IC,Modules,Potentiometer,IC Socket,Relay,Connector.Our parts cover such applications as commercial,industrial, and automotives areas.

We are looking forward to setting up business relationship with you and hope to provide you with the best service and solution. Let us make a better world for our industry!



Contact us

Tel: +86-755-8981 8866 Fax: +86-755-8427 6832

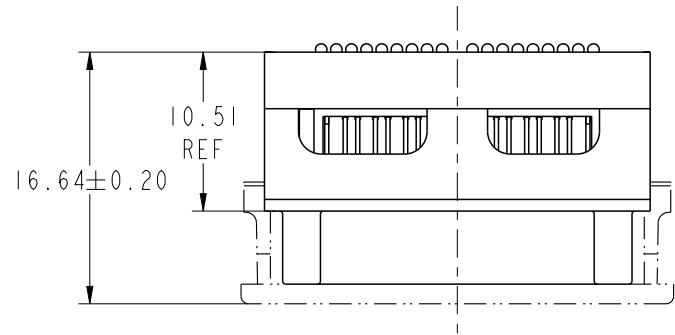
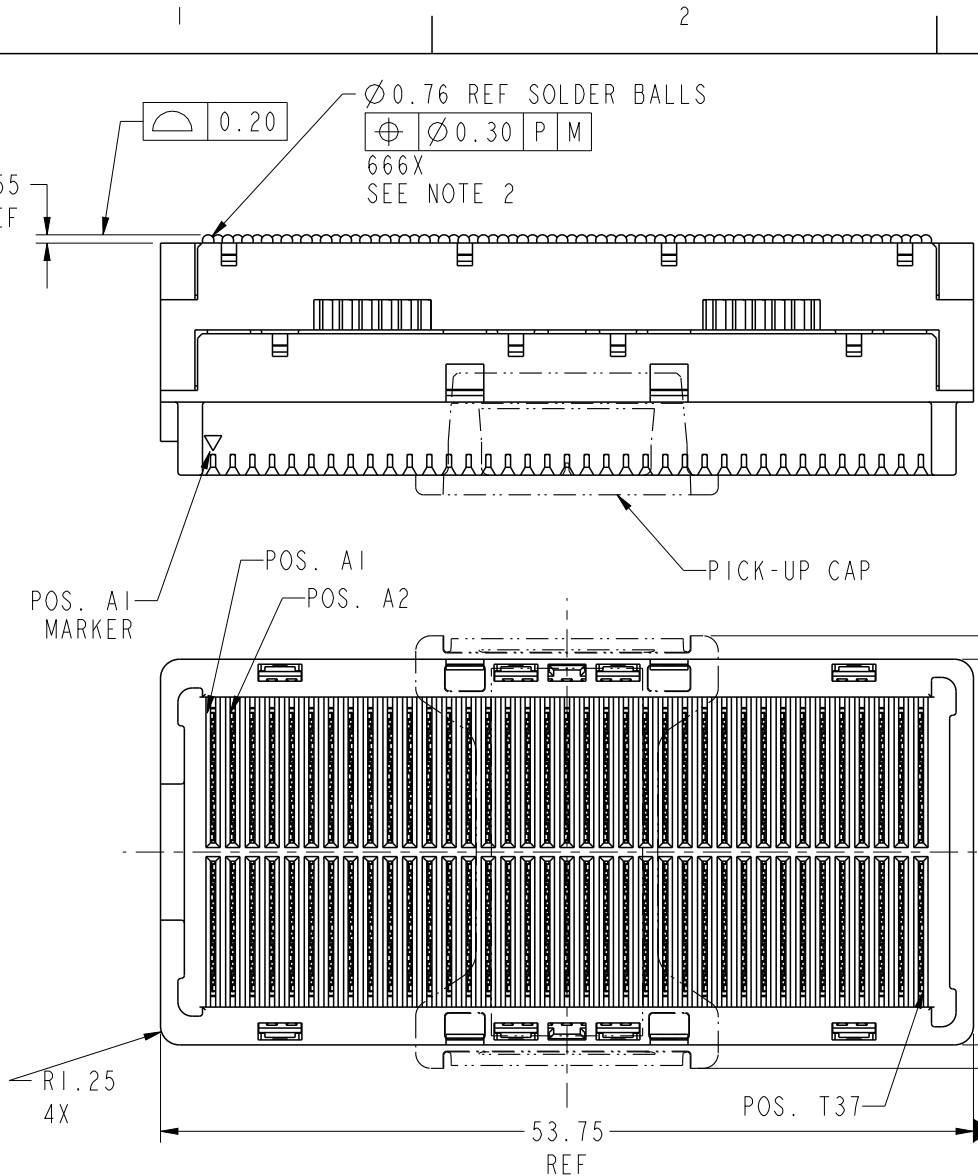
Email & Skype: info@chipsmall.com Web: www.chipsmall.com

Address: A1208, Overseas Decoration Building, #122 Zhenhua RD., Futian, Shenzhen, China





Copyright FCI.



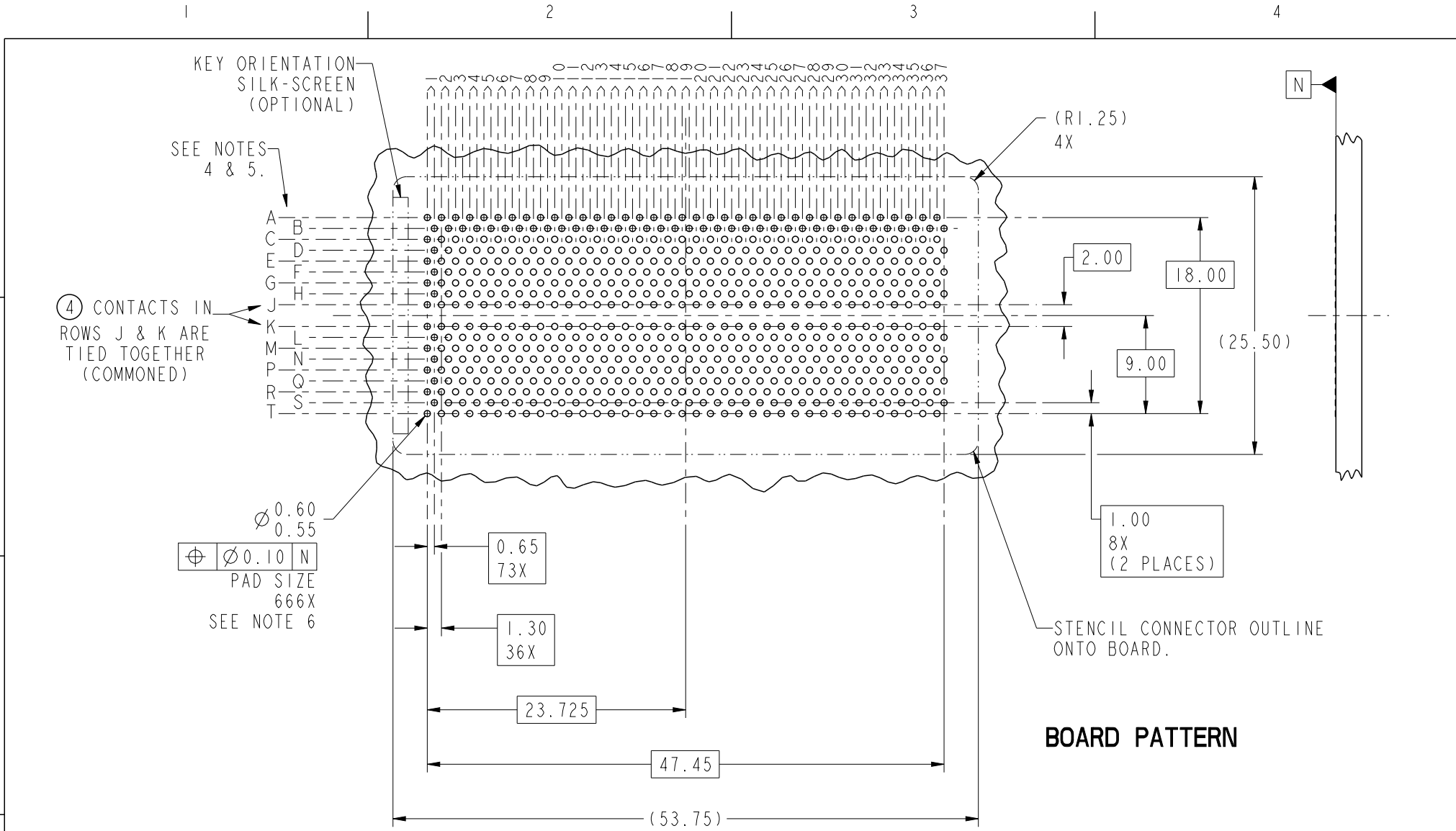
rev	ecn no	dr	date
A	V07-0606	LP	2007/09/19
-	-	-	-
-	-	-	-

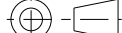

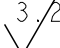

spec ref -				dr Bill Lin		2010/02/02		<div>projection</div> <div></div>	<div>mm</div> <div></div>	size A4		scale 3:10	
tolerance std -				eng Nickor Zuo		2011/06/24				ecn no ELX-DG-003943-1			
- TOLERANCES UNLESS OTHERWISE SPECIFIED				chr Alex Cao		2011/06/24				rel level Released			
-				appr Pei-Ming Zheng		2011/06/27				product family GIG-Array			
surface 3.2		linear	0.X	±0.30			title GIG-Array				dwg no 10081497	rev B	
ASME Y14.5			0.XX	±0.10									
			0.XXX	±0.05									
		angular	0°	±2°									
www.fci.com				cat. no.		-		Product - Customer Drw				sheet 1 of 5	

PrintE File - REV C - 2009-06-09

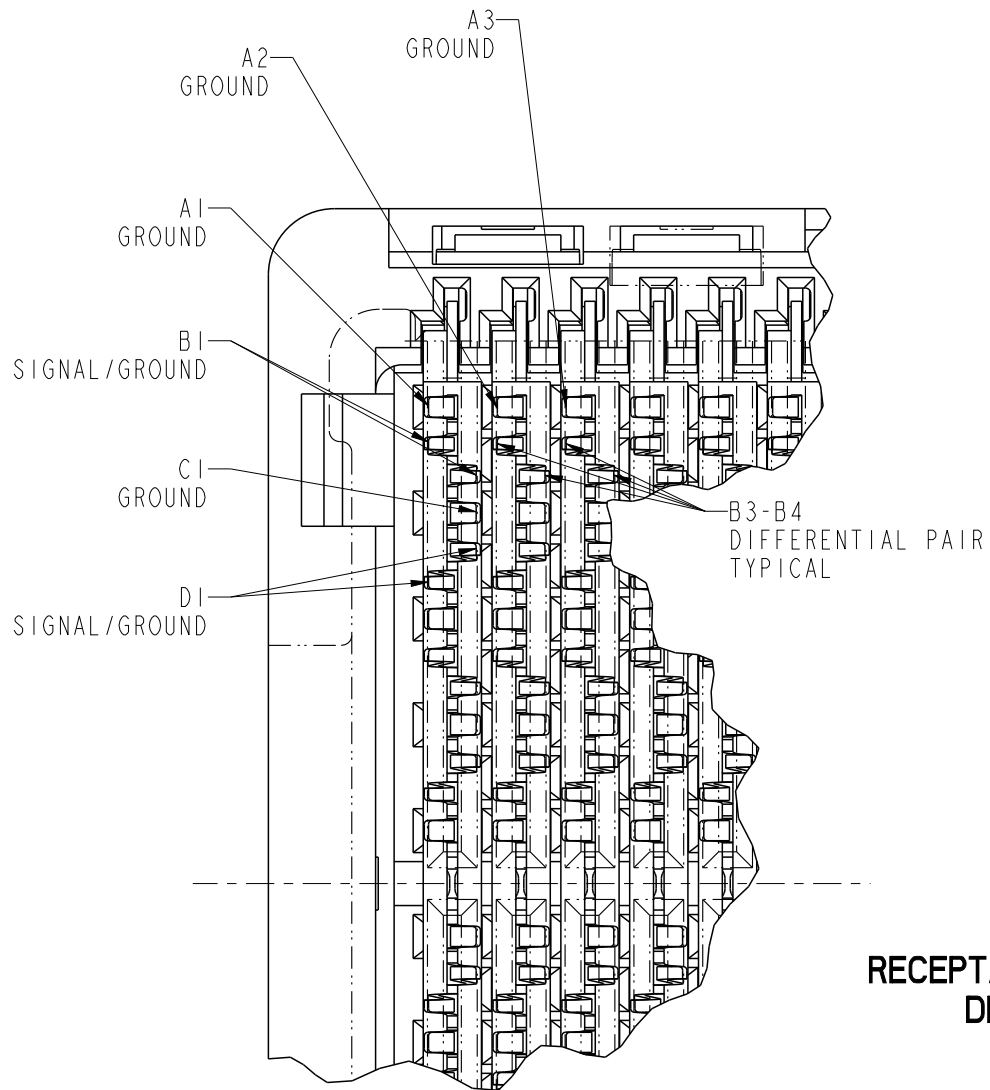


Copyright FCI.

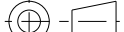





spec ref -				dr Bill Lin 2010/02/02		projection 	mm 	size A4	scale 2:1
tolerance std - -	TOLERANCES UNLESS OTHERWISE SPECIFIED			eng Nickor Zuo 2011/06/24				ecn no ELX-DG-003943-1	
				chr Alex Cao 2011/06/24					
				appr Pei-Ming Zheng 2011/06/27		product family GIG-Array		rel level Released	
surface 3.2 	linear	0.X	±0.30		title GIG-Array 11mm RECP. ASSY. 296 SIG. POS.			dwg no 10081497	rev B
		0.XX	±0.10						
		0.XXX	±0.05						
ASME Y14.5	angular	0°	±2°	www.fci.com	cat. no. -		Product - Customer Drw		sheet 2 of 5

Print File - REV C - 2009-06-09

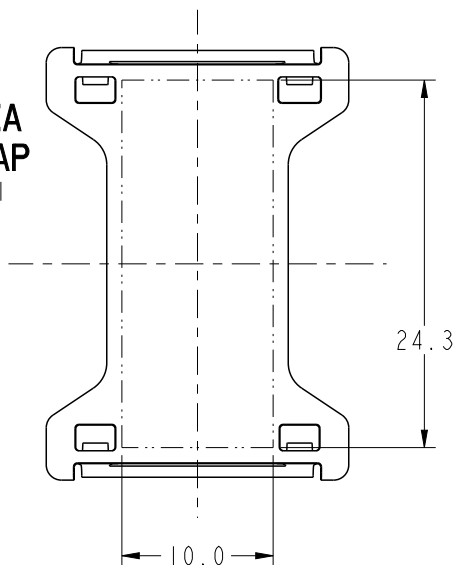


RECEPTACLE INTERFACE DESCRIPTION

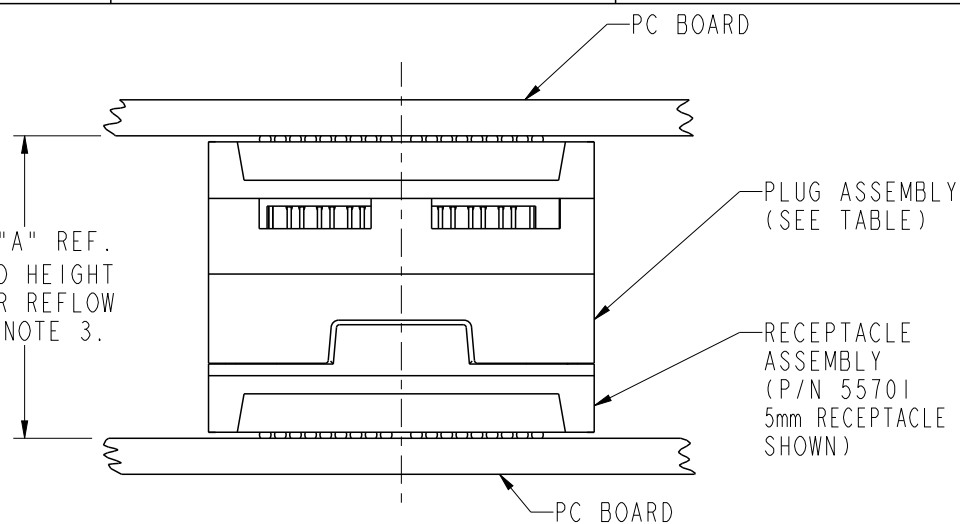
spec ref		-		dr	Bill Lin	2010/02/02	<div>projection</div> <div></div>	<div>mm</div> <div></div>	size	A4	scale	3:10		
tolerance std	TOLERANCES UNLESS OTHERWISE SPECIFIED			eng	Nickor Zuo	2011/06/24			ecn no	ELX-DG-003943-1				
				chr	Alex Cao	2011/06/24								
				appr	Pei-Ming Zheng	2011/06/27						product family		GIG-Array
surface		linear	0.X	±0.30		title			GIG-Array	dwg no	10081497		rev	B
			0.XX	±0.10										
			0.XXX	±0.05										
ASME Y14.5		angular	0°	±2°	www.fci.com	cat. no.		-	Product - Customer Drw			sheet 3 of 5		

ProjE File - REV C - 2009-06-09

**FLAT AREA
PICK-UP CAP**
SCALE 2:1

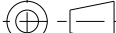





DIM "A" REF.
MATED HEIGHT
AFTER REFLOW
SEE NOTE 3.



END VIEW OF MATED CONNECTORS
SCALE 2:1

DIM. "A"	PLUG ASSEMBLY P/N
21	55720
23	10026804
24	10008026
26	55700
31	55727
36	10054784

spec ref -				dr Bill Lin2010/02/02		projection 	mm 	size A4	scale 3:10
tolerance std - -	TOLERANCES UNLESS OTHERWISE SPECIFIED			eng Nickor Zuo2011/06/24				ecn no ELX-DG-003943-1	
				chr Alex Cao2011/06/24				rel level Released	
				appr Pei-Ming Zheng2011/06/27					
surface 3.2 	linear	0.X	±0.30		title GIG-Array 11mm RECP. ASSY. 296 SIG. POS.			dwg no 10081497	rev B
		0.XX	±0.10						
		0.XXX	±0.05						
	ASME Y14.5	angular	0°						

PRODUCT NUMBER	SOLDER BALL COMPOSITION	CONTACT PLATING PERFORMANCE LEVEL
10081497-001	STANDARD (EUTECTIC)	PERFORMANCE-BASED PLATING, QUALIFIED TO MEET THE REQUIREMENTS OF FCI PRODUCT SPECIFICATION GS-12-192, INCLUDING TELCORDIA CENTRAL OFFICE
10081497-001LF	LEADFREE	

NOTES:

- ① MATERIAL:
HOUSING: LCP
CONTACT: COPPER ALLOY
PLATING (CONTACT): Au OVER Ni.
UL RATING: 94 V-0
SOLDER BALL: (SEE TABLE) EUTECTIC SnPb OR LEADFREE 95.5 Sn/4Ag/0.5Cu
- ② SOLDER BALLS WILL NOT BE PERFECT SPHERICAL SHAPE DUE TO REFLOW ATTACHMENT.
- ③ MATED HEIGHT EFFECTED BY CUSTOMERS' PCB PAD SIZE, PLATING, SOLDER REFLOW PROFILE & SOLDER PASTE.
- ④ CONTACTS IN ROWS A,C,E,G,J,K,M,P,R AND T ARE SINGLE BEAM CONTACTS, TYPICALLY USED AS GROUND PINS.
(NOTE: CONTACTS IN ROWS J & K ARE TIED TOGETHER [COMMONED])
- ⑤ CONTACTS IN ROWS B,D,F,H,L,N,Q AND S ARE DUAL BEAM CONTACTS, TYPICALLY USED AS SIGNAL PINS.

NOTES CONTINUED

- ⑥ SPECIFIED POSITIONAL TOLERANCE DEFINES PAD TO PAD LOCATION WITHIN LAND PATTERN. POSITIONAL TOLERANCE OF LAND PATTERN TO FUDICIAL MARKS OR PCB DATUMS SHALL BE DEFINED BY CUSTOMER. FOR RECOMMENDED PRODUCT APPLICATION AND PCB DESIGN DETAILS, SEE DOC. NO. GS-20-016.
- ⑦ FOR PROPER APPLICATION FOLLOW FCI APPLICATION SPECIFICATION GS-20-033 LEADFREE SOLDER BALLS WILL NOT SOLDER PROPERLY IN A LEADED SOLDER PROCESS DUE TO A HIGHER REFLOW TEMPERATURE, LEADFREE PRODUCT IS THEREFORE NOT BACKWARDS COMPATIBLE WITH LEADED OR SOME SOLDERING APPLICATIONS. REFERENCE FCI APPLICATION SPECIFICATION.
- ⑧ THIS PRODUCT MEETS THE EUROPEAN UNION DIRECTIVES AND OTHER COUNTRY REGULATIONS AS DESCRIBED IN GS-22-008. PRODUCT MEETING WITH THES DIRECTIVE IS IDENTIFIED IN THE LOT CODE NUMBER MARKED ON EACH PART BY HAVING AN "X" IN THE SEVENTH CHARACTER POSITION.

spec ref -				dr Bill Lin		2010/02/02		projection				size A4		scale 3:10	
tolerance std -				eng Nickor Zuo		2011/06/24						ecn no ELX-DG-003943-1			
-				chr Alex Cao		2011/06/24									
-				appr Pei-Ming Zheng		2011/06/27						product family GIG-Array		rel level Released	
surface 3.2		linear		0.X ±0.30				title GIG-Array		dwg no 10081497		rev B			
		0.XX ±0.10													
		0.XXX ±0.05													
ASME Y14.5		angular 0° ±2°		www.fci.com		cat. no. -		Product - Customer Drw				sheet 5 of 5			